

SUPERIOR

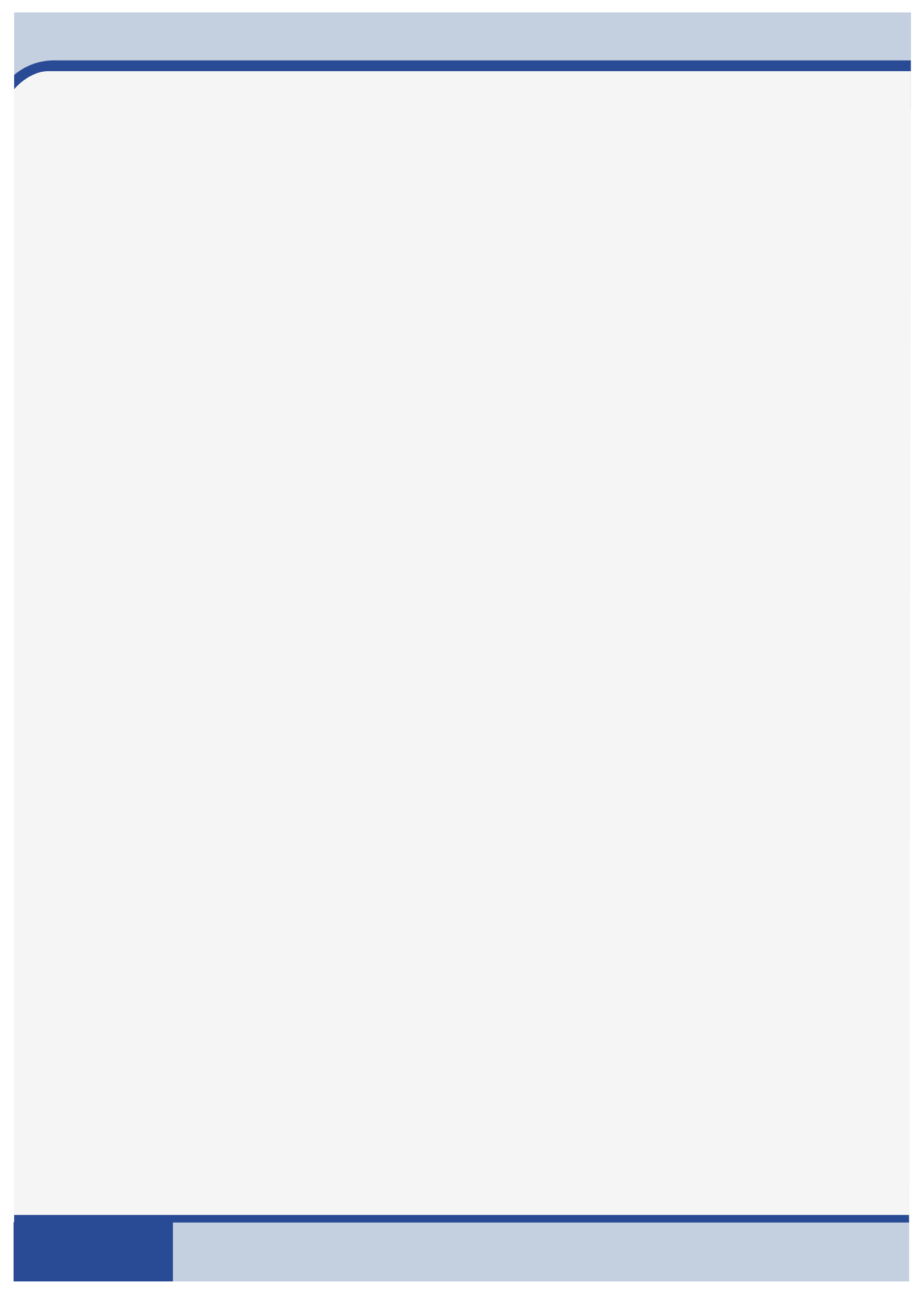
HYDROLIQUE PVT LTD



HOSE FITTINGS

CATALOGUE

www.superflowfittings.com



ABOUT US

Incorporated in the year 2000, SUPERIOR HYDROLIQUE Pvt. Ltd. is one of the leading manufacturers, exporters and suppliers of largest range hydraulic fittings based in Pune - India. We are in this field for the past 21 years and serving this dynamic and complex market's requirement with a wide range of products.

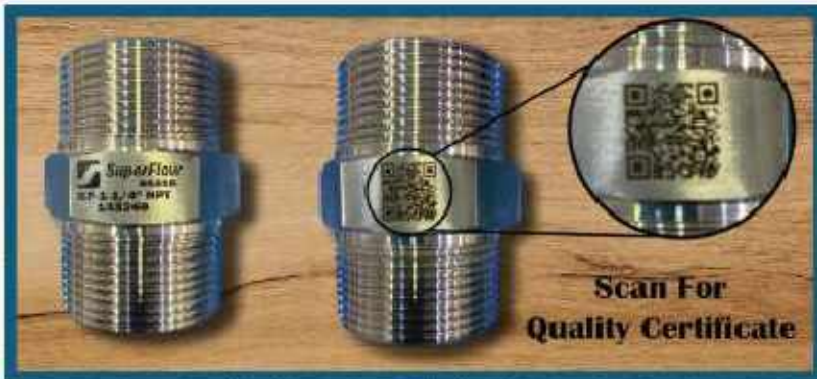
Started with a Hose assembly unit in early 2000 with a 500 sqft. Unit, Our company was successful in starting with the process of design & development of hose fittings & then later on expanded into manufacturing a full range of hydraulic fittings. In the year 2016, We were successful in the addition of a unit for high-pressure vessels & pipe fabrications. Recently, We have also been able to achieve CE Certification for our European Clients.

Our Products are designed & Developed in compliance with the international quality standards & are manufactured from quality components to attain high efficiency. At par service, Technically Fit Assemblies, Affordable prices and topmost technical assistance makes us one of the top contender amongst our competitors. Furthermore, we precisely design all our products keeping in mind clients requirements and prevailing market trends. Tested on several stringent parameters, all our products are featured with longer service life, efficiency, resistance against corrosion and sturdy construction.

With currently over 35000 sqft. Manufacturing unit and 100+ employees, we have achieved a reputable position in the global arena. Superior Hydrolique has now grown to a company supplying its product as an OEM vendor to major companies in and around Maharashtra - India and we attribute our growth to our esteemed customers based in India & Overseas.



QUALITY CERTIFICATION



Considering the importance and need to provide quality hydraulic fittings, especially, in such a competitive market, we have incorporated QR Code scanning system for our every product.

At SUPERIOR HYDROLIQUE Pvt. Ltd. every manufactured hydraulic fitting has a QR code associated with them. It is a faster and easier way to access your product's quality certifications and other documentation. Just by scanning our QR codes on your mobile device, you can view its quality

certificate, data-sheets, manuals, hydraulic and electrical schematics and more. There is no mechanism for ensuring the genuineness and quality of such types of fittings supplied from many accredited brands. Many suffer huge losses due to the purchase of low quality fittings. The importance of Quick Response (QR) Coded products helps in overcoming such drawbacks. The QR Codes are one of the easiest ways of providing the information to the customers and other individuals, allowing them to extract the valuable data with just scanning the code with the help of an optical reader.

One of the most significant advantages of QR codes for consumers is the quality assurance. When consumers scan a QR code on a product, it links them to the product's quality certification. This will help the product to pass through all quality control checks easily just through a scan.

QR codes allow us to provide more in-depth information about our products, policies and practices making the processes on customer end much easier. This leads to greater transparency and increased consumer trust on the quality of our

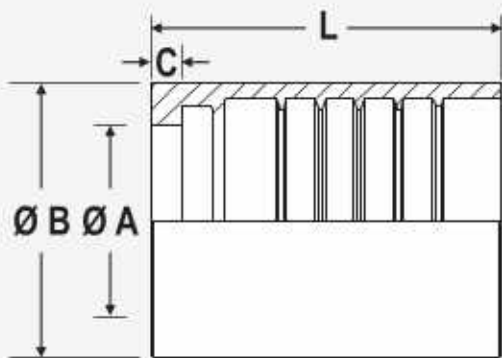
WE USE JAPANESE TECHNOLOGY



INDEX

- FERRULES	...04
- HOSE FITTING BSP	...09
- HOSE FITTING METRIC	...14
- HOSE FITTING JIC	...25
- HOSE FITTING ORFS	...27
- HOSE FITTING NPT	...29
- HOSE FITTING FLANGES	...30
- HOSE FITTING INTERLOCK	...35
- HOSE FITTING REUSABLE	...46
- HOSE FITTING O-RING BOSS	...50
- DOUBLE INSERTS	...51
- ADAPTORS	...52





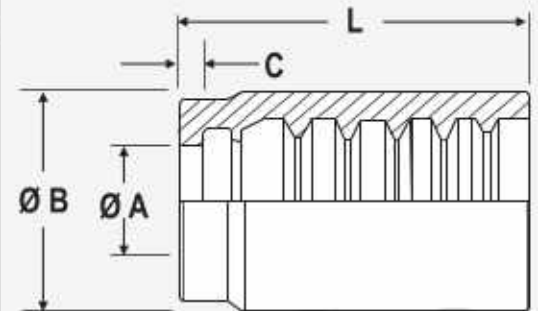
SF 11

HOSE : R1/R2 (SF 11 - SKIVE TYPE)

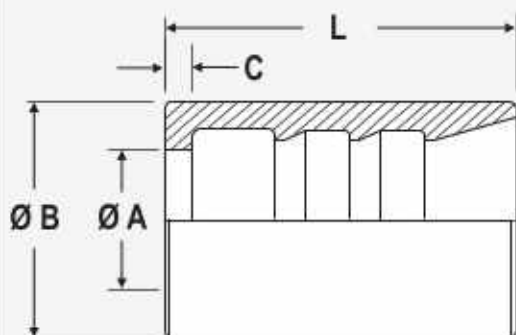
Part No.	Hose Bore		ØA mm	ØB mm	C mm	L mm
	Inches	Metric				
SF 11 06	1/4"	6.4	9.5	20	3	32
SF 11 08	5/16"	7.9	11	22	3	32
SF 11 10	3/8"	9.5	12.5	25	3	32
SF 11 12	1/2"	12.7	16	28	3	35
SF 11 16	5/8"	15.9	18.5	32	3	35
SF 11 20	3/4"	19.1	21.5	36	3.5	45
SF 11 25	1"	25.4	27.5	45	4	50
SF 11 32	1-1/4"	31.8	36	54	4	60
SF 11 38	1-1/2"	38.1	40.5	62	4	60
SF 11 51	2"	50.8	52.5	75	4.5	70

HOSE : R1/R2 (SF 22)- NON SKIVE TYPE

Part No.	Hose Bore		ØA mm	ØB mm	C mm	L mm
	Inches	Metric				
SF 22 06	1/4"	6.4	11.5	22	2.5	30
SF 22 08	5/16"	7.9	13	24	2.5	32
SF 22 10	3/8"	9.5	14.3	25	2.5	32
SF 22 12	1/2"	12.7	18.5	30	2.5	34
SF 22 16	5/8"	15.9	22	34	2.5	38
SF 22 20	3/4"	19.1	24.5	38	3.5	43
SF 22 25	1"	25.4	31.2	45	4	52
SF 22 32	1-1/4"	31.8	38	55	4.2	60
SF 22 38	1-1/2"	38.1	44	63	4	60
SF 22 51	2"	50.8	57	77	5.2	72



SF 22

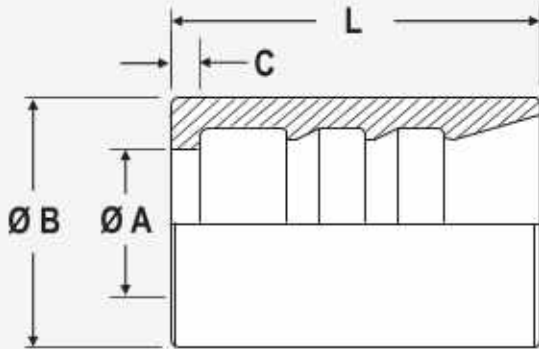


SF 12

HOSE : 4SP/4SH (SF 12 - SKIVE TYPE)

Part No.	Hose Bore		ØA mm	ØB mm	C mm	L mm
	Inches	Metric				
SF 12 10	3/8"	9.5	14.3	25	2.5	32
SF 12 12	1/2"	12.7	18.5	30	2.5	36.5
SF 12 16	5/8"	15.9	21.6	32.5	3.5	38
SF 12 20	3/4"	19.1	24.5	37	3.5	46
SF 12 25	1"	25.4	31.2	46	4	53
SF 12 32	1-1/4"	31.8	38.1	57	4.2	63.5
SF 12 38	1-1/2"	38.1	44	65	4.2	64.8
SF 12 50	2"	50.8	57	79	5.2	75

HOSE : R13 (SF 13 - SKIVE TYPE)

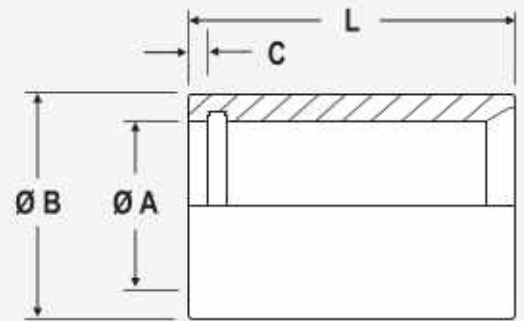


SF 13

Part No.	Hose Bore		ØA mm	ØB mm	C mm	L mm
	Inches	Metric				
SF 13 20	3/4"	19.1	23	38	4	60
SF 13 25	1"	25.4	29	46.5	4.5	60
SF 13 32	1-1/4"	31.8	36.5	58	4.5	71.2
SF 13 38	1-1/2"	38.1	41.5	66	5	80
SF 13 50	2"	50.8	55	82	6.5	80

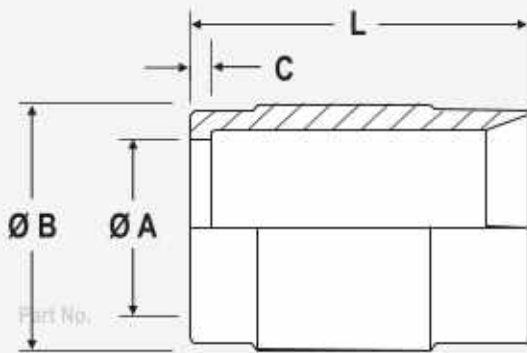
HOSE : (PTFE SMOOTH BORE SF TTB)

Part No.	Hose Bore		ØA mm	ØB mm	C mm	L mm
	Inches	Metric				
SF TTB 06	1/4"	6.4	11.4	18	2.5	30
SF TTB 08	3/8"	9.5	14	20	2.5	32
SF TTB 12	1/2"	12.7	18.5	24	2.5	35
SF TTB 16	5/8"	15.9	22	27	2.5	35
SF TTB 20	3/4"	19.1	24.5	30	3.5	45
SF TTB 25	1"	25.4	31	38	4	50



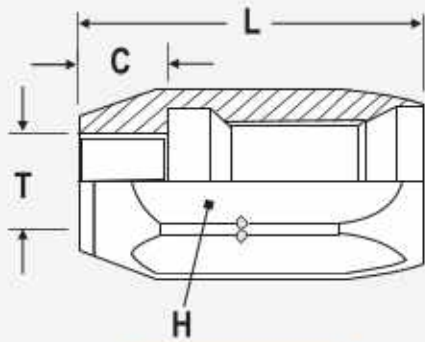
SF TTB

HOSE: PTFE CONVULATED TAPE WRAPPED & CONVULATED EXTRUDED (SF TC)



SF TC

Part No.	Hose Bore		ØA mm	ØB mm	C mm	L mm
	Inches	Metric				
SF TC 06	1/4"	6.4	11.5	8	2.5	26.5
SF TC 10	3/8"	9.5	14.3	20	2.5	30.5
SF TC 12	1/2"	12.7	18.5	24	2.5	33
SF TC 16	5/8"	15.9	22	30	2.5	35
SF TC 20	3/4"	19.1	24.5	32	3.5	41
SF TC 25	1"	25.4	31.2	38	4	47
SF TC 32	1-1/4"	31.8	38	50	4.2	53
SF TC 38	1-1/2"	38.1	44	55	4	58.5
SF TC 50	2"	50.8	57	70	5.2	72



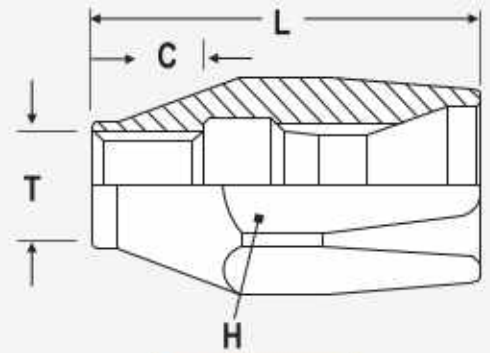
SF R100

HOSE : R100 PERFORMER -T: 1ST & LOW PRESSURE HOSES (SFR100)

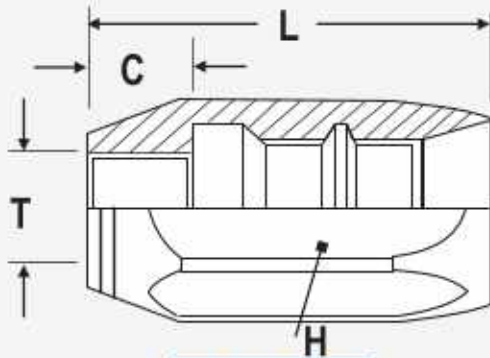
Part No.	Hose Bore		C mm	H mm	L mm	T
	Inches	Metric				
SF R100 06	1/4"	6.4	9.5	17	28	7/16"-20
SF R100 10	3/8"	9.5	12.2	24	42	9/16"-18
SF R100 16	5/8"	15.9	13.2	30	45.8	3/4"-18
SF R100 20	3/4"	19.1	13.6	32	53.5	7/8"-18
SF R100 25	1"	25.4	14	36	55	1-3/16"-16

HOSE : R200 PERFORMER / T-2ST & LOW PRESSURE HOSES (SFR200)

Part No.	Hose Bore		C mm	H mm	L mm	T
	Inches	Metric				
SF R200 06	1/4"	6.4	11.5	22	44	7/16"-20
SF R200 12	3/8"	9.5	12.7	27	49	9/16"-18
SF R200 16	5/8"	15.9	14.5	32	53.5	3/4"-18
SF R200 20	3/4"	19.1	15.3	41	62.7	7/8"-18
SF R200 25	1"	25.4	23	46	75	1-3/16"-16



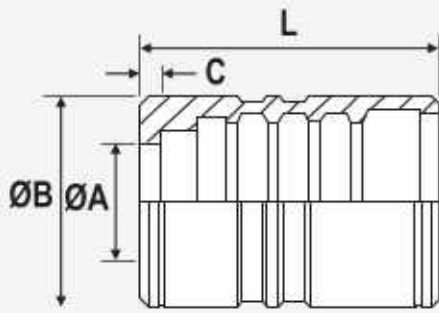
SF R200



SF R720

HOSE : R720 PERFORMER -2SN - SFR720)

Part No.	Hose Bore		C mm	H mm	L mm	T
	Inches	Metric				
SF R720 06	1/4"	6.4	9.7	22	40.5	7/16"-20
SF R720 12	3/8"	9.5	11.7	27	47.8	9/16"-18
SF R720 16	1/2"	12.7	13	30	51.3	5/8"-18
SF R720 20	3/4"	19.1	13	36	57.2	7/8"-18
SF R720 25	1"	25.4	15.2	46	67	1"-16



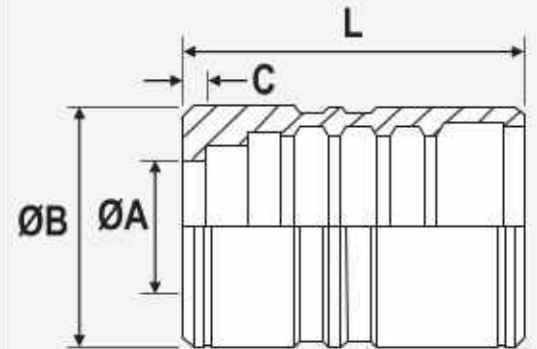
SFWBMPF 75/85

SFWBMPF(SKIVE TYPE) HOSES:
HYDROBLAST -75/85

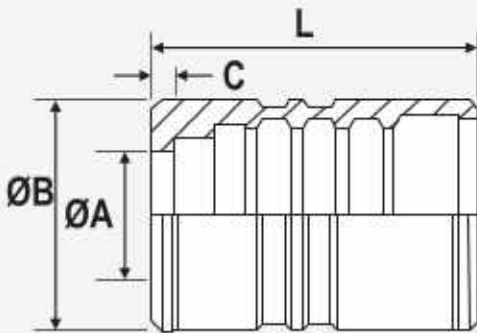
Part No.	Hose Bore		Ø A mm	Ø B mm	C mm	L mm
	Inches	mm				
SF WBMPF 12 85	1/2"	12.7	21.1	32.0	3.4	50.0

HOSE : (SKIVE TYPE) HOSE : HYDROBLAST-110
SFWBMPF)

Part No.	Hose Bore		ØA mm	ØB mm	C mm	L mm
	Inches	Metric				
SF WBMPF-110 06	3/8"	9.5	17.8	31	3.6	50
SF WBMPF-110 12	1/2"	12.7	21	35	3.4	50
SF WBMPF-110 19	3/4"	19.1	26.2	43	3.7	61



SF WBMPF 110



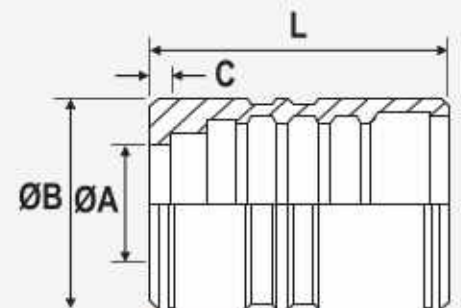
SF WBMPF 140

HOSE : (SKIVE TYPE) HYDROBLAST-140 (SFWBMPF)

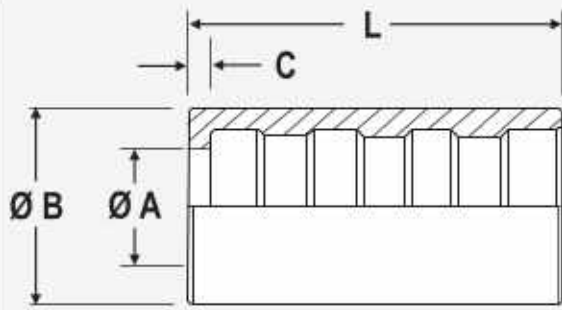
Part No.	Hose Bore		ØA mm	ØB mm	C mm	L mm
	Inches	Metric				
SF WBMPF-140 06	3/8"	9.5	17.8	32	3.4	50
SF WBMPF-140 12	1/2"	12.7	21.1	37.5	3.6	50

INTERLOCK (sf INT)

Part No.	Hose Bore		ØA mm	ØB mm	C mm	L mm
	Inches	Metric				
SF INT 16	5/8"	15.9	23.5	35	4	42
SF INT 19	3/4"	19.1	27.5	40	4.5	52
SF INT 25	1"	25.4	32.5	50	5	70
SF INT 32	1-1/4"	31.8	43.5	60	6	84
SF INT 38	1-1/2"	38.1	50	68	6	94
SF INT 50	2"	50.8	65	85	7	107



SF INT



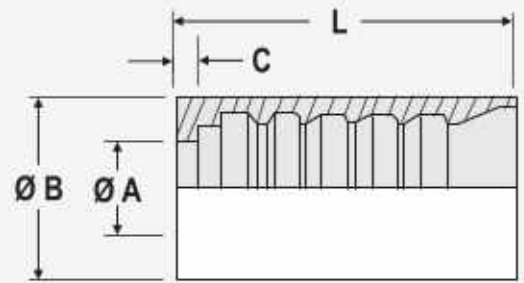
SF 21

**SF 21 (NON SKIVE TYPE) HOSES:
THERMOPLASTIC EN 855-R7**

Part No.	Hose Bore		Ø A mm	Ø B mm	C mm	L mm
	Inches	mm				
SFPF 21 19	3/4"	19.1	24.40	32.00	3.40	51.00
SFPF 21 25	1"	25.4	30.80	41.00	3.40	51.00

**SFMPF 3 (SKIVE TYPE) HOSES: HI-PULSE - 4SP/4SH,
IMPETUS -280/350/420**

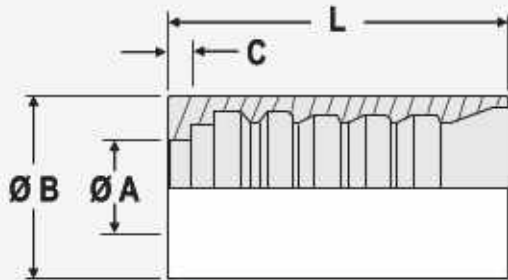
Part No.	Hose Bore		Ø A mm	Ø B mm	C mm	L mm
	Inches	mm				
SFMPF 3 19	3/4"	19.1	24.00	40.00	3.60	62.20
SFMPF 3 25	1"	25.4	30.00	47.00	4.00	75.00
SFMPF 3 31	1 1/4"	31.8	37.60	56.00	5.00	82.00
SFMPF 3 38	1 1/2"	38.1	44.00	63.00	5.50	93.00
SFMPF 3 51	2"	50.8	56.50	80.00	7.30	100.00



SF MPF3

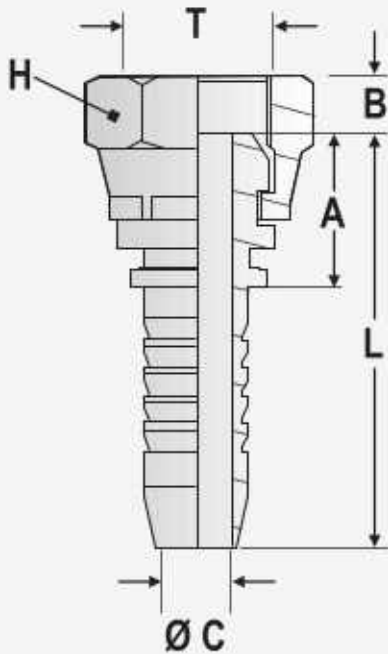
**SFMPF 4 (SKIVE TYPE) HOSES: HI-PULSE - 4SP/4SH,
IMPETUS -280/350/420**

Part No.	Hose Bore		Ø A mm	Ø B mm	C mm	L mm
	Inches	mm				
SFMPF 4 31	1 1/4"	31.8	38.20	61.00	5.00	82.00
SFMPF 4 38	1 1/2"	38.1	44.60	71.00	5.50	93.00
SFMPF 4 51	2"	50.8	56.00	85.00	7.30	100.00



SF MPF4

SFDKR BSP FEMALE
60° CONE - SFDKR)

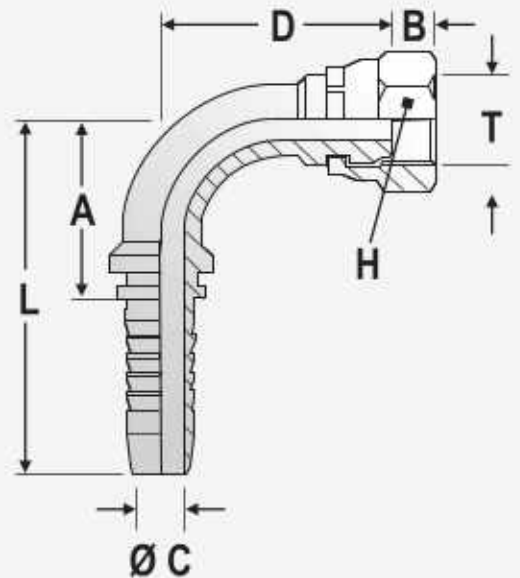


SFDKR

Part No.	Nut Type	Thread T	Hose Bore		A	B	Ø C	L	H
			Inches	mm					
SF DKR 02 05	a	1/8"-28	3/16"	4.8	15.54	4.67	3.0	37.50	14.0
SF DKR 02 06	a	1/8"-28	1/4"	6.4	16.26	4.67	4.0	44.30	14.0
SF DKR 04 06	a	1/4"-19	1/4"	6.4	17.91	5.45	4.0	45.90	19.0
SF DKR 04 08	a	1/4"-19	5/16"	7.9	17.58	5.45	5.5	45.60	19.0
SF DKR 06 06	a	3/8"-19	1/4"	6.4	19.00	6.25	4.0	47.00	22.0
SF DKR 06 08	a	3/8"-19	5/16"	7.9	19.18	6.25	5.5	46.84	22.0
SF DKR 06 10	a	3/8"-19	3/8"	9.5	19.00	6.25	7.0	48.72	22.0
SF DKR 06 12	a	3/8"-19	1/2"	12.7	20.18	6.25	9.5	49.70	22.0
SF DKR 08 10	a	1/2"-14	3/8"	9.5	21.67	6.75	7.0	51.40	27.0
SF DKR 08 12	a	1/2"-14	1/2"	12.7	22.85	6.75	9.5	52.35	27.0
SF DKR 10 12	a	5/8"-14	1/2"	12.7	23.73	9.70	9.5	53.23	30.0
SF DKR 10 16	a	5/8"-14	5/8"	15.9	21.70	9.70	12.5	55.32	30.0
SF DKR 12 12	a	3/4"-14	1/2"	12.7	25.99	8.71	9.5	55.50	32.0
SF DKR 12 16	a	3/4"-14	5/8"	15.9	25.99	8.71	12.5	60.00	32.0
SF DKR 12 19	a	3/4"-14	3/4"	19.1	25.46	8.71	15.0	64.70	32.0
SF DKR 16 19	a	1"-11	3/4"	19.5	27.50	10.74	15.0	66.70	38.0
SF DKR 16 25	a	1"-11	1"	25.4	24.82	10.74	19.5	71.56	38.0
SF DKR 20 31	a	1 1/4"-11	1 1/4"	31.8	30.01	10.11	26.0	83.00	50.0
SF DKR 24 38	a	1 1/2"-11	1 1/2"	38.1	32.43	12.50	32.0	90.40	55.0
SF DKR 32 51	a	2"-11	2"	50.8	30.90	16.11	42.0	103.60	70.0

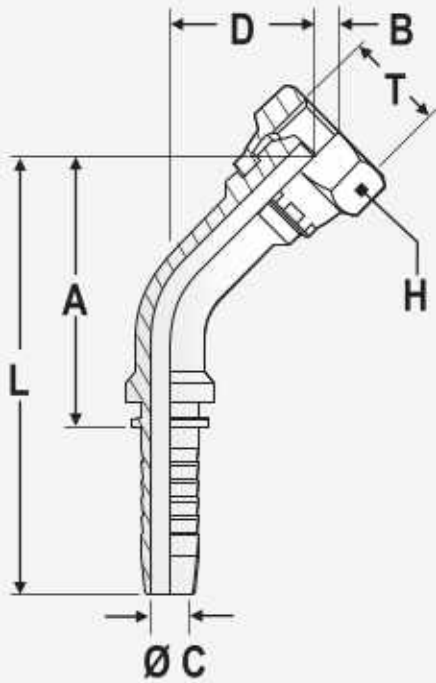
SFDKR 90° BSP FEMALE 60° CONE

Part No.	Nut Type	Thread T	Hose Bore		A	B	Ø C	D	L	H
			Inches	mm						
SF DKR 90 02 06	a	1/8"-28	1/4"	6.4	27.00	4.67	4.00	27.00	55.00	14.0
SF DKR 90 04 06	a	1/4"-19	1/4"	6.4	27.00	5.45	4.00	28.00	55.00	19.0
SF DKR 90 06 06	a	3/8"-19	1/4"	6.4	27.00	6.25	4.00	30.00	55.00	22.0
SF DKR 90 06 08	a	3/8"-19	5/16"	7.9	32.50	6.25	5.50	35.50	60.50	22.0
SF DKR 90 06 10	a	3/8"-19	3/8"	9.5	35.78	6.25	7.00	37.50	65.50	22.0
SF DKR 90 08 10	a	1/2"-14	3/8"	9.5	35.78	6.75	7.00	40.50	65.50	27.0
SF DKR 90 08 12	a	1/2"-14	1/2"	12.7	48.00	6.75	9.50	46.00	77.50	27.0
SF DKR 90 10 12	a	5/8"-14	1/2"	12.7	48.00	9.70	9.50	47.00	77.50	30.0
SF DKR 90 10 16	a	5/8"-14	5/8"	15.9	48.96	9.70	12.50	50.00	84.00	30.0
SF DKR 90 12 12	a	3/4"-14	1/2"	12.7	48.00	8.71	9.50	49.00	77.50	32.0
SF DKR 90 12 16	a	3/4"-14	5/8"	15.9	49.96	8.71	12.50	54.00	84.00	32.0
SF DKR 90 12 19	a	3/4"-14	3/4"	19.1	56.26	8.71	15.00	58.00	95.50	32.0
SF DKR 90 16 19	a	1"-11	3/4"	19.1	56.26	10.74	15.00	59.00	95.50	38.0
SF DKR 90 16 25	a	1"-11	1"	25.4	77.96	10.74	19.50	67.70	124.70	38.0
SF DKR 90 20 31	a	1 1/4"-11	1 1/4"	31.8	95.47	10.11	26.00	90.00	150.00	50.0
SF DKR 90 24 38	a	1 1/2"-11	1 1/2"	38.1	117.00	12.50	32.00	104.50	175.00	55.0
SF DKR 90 32 51	a	2"-11	2"	50.8	142.25	16.11	42.00	142.50	215.00	70.0



SFDKR 90°

SFDKR 45° BSP FEMALE 60° CONE

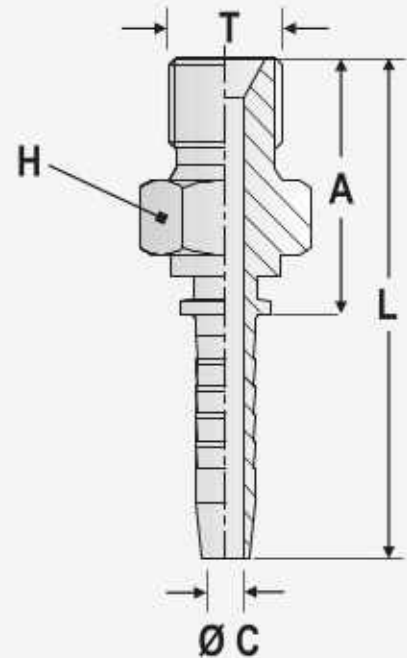


SFDKR 45°

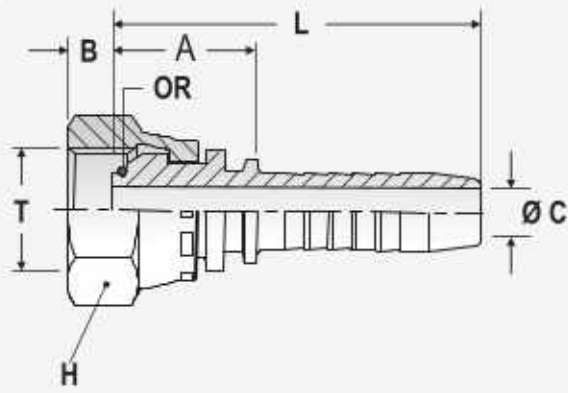
Part No.	Nut Type	Thread T	Hose Bore		A mm	B mm	Ø C mm	L mm	H mm
			Inches	mm					
SF DKR 45 02 06	a	1/8"-28	1/4"	6.4	36.00	4.67	4.0	64.0	14.0
SF DKR 45 04 06	a	1/4"-19	1/4"	6.4	37.00	5.45	4.0	65.0	19.0
SF DKR 45 06 06	a	3/8"-19	1/4"	6.4	37.00	6.25	4.0	65.0	22.0
SF DKR 45 06 08	a	3/8"-19	5/16"	7.9	45.00	6.25	5.5	73.0	22.0
SF DKR 45 06 10	a	3/8"-19	3/8"	9.5	43.28	6.25	7.0	73.0	22.0
SF DKR 45 08 10	a	1/2"-14	3/8"	9.5	43.28	6.75	7.0	73.0	27.0
SF DKR 45 08 12	a	1/2"-14	1/2"	12.7	49.50	6.75	9.5	79.0	27.0
SF DKR 45 10 12	a	5/8"-14	1/2"	12.7	49.50	9.70	9.5	79.0	30.0
SF DKR 45 10 16	a	5/8"-14	5/8"	15.9	58.96	9.70	12.5	93.0	30.0
SF DKR 45 12 12	a	3/4"-14	1/2"	12.7	48.50	8.71	9.5	78.0	32.0
SF DKR 45 12 16	a	3/4"-14	5/8"	15.9	58.96	8.71	12.5	93.0	32.0
SF DKR 45 12 19	a	3/4"-14	3/4"	19.1	69.76	8.71	15.0	109.0	32.0
SF DKR 45 16 19	a	1"-11	3/4"	19.1	69.76	10.74	15.0	109.0	38.0
SF DKR 45 16 25	a	1"-11	1"	25.4	79.66	10.74	19.5	126.4	38.0
SF DKR 45 20 31	a	1 1/4"-11	1 1/4"	31.8	93.47	10.11	26.0	148.0	50.0
SF DKR 45 24 38	a	1 1/2"-11	1 1/2"	38.1	132.00	12.50	32.0	190.0	55.0
SF DKR 45 32 51	a	2"-11	2"	50.8	157.25	16.11	42.0	230.0	70.0

SFAGR BSP MALE 60° CONE

Part No.	Nut Type	Thread T	Hose Bore		A mm	Ø C mm	L mm	H mm
			Inches	mm				
SF AGR 02 06	-	1/8"-28	1/4"	6.4	23.62	4.0	50.93	14.0
SF AGR 04 06	-	1/4"-19	1/4"	6.4	22.94	4.0	50.24	19.0
SF AGR 06 06	-	3/8"-19	1/4"	6.4	25.66	4.0	53.56	22.0
SF AGR 06 08	-	3/8"-19	5/16"	7.9	25.84	5.5	53.84	22.0
SF AGR 06 10	-	3/8"-19	3/8"	9.5	24.19	7.0	53.91	22.0
SF AGR 06 12	-	3/8"-19	1/2"	12.7	25.37	9.5	54.90	27.0
SF AGR 08 10	-	1/2"-14	3/8"	9.5	28.70	7.0	58.42	27.0
SF AGR 08 12	-	1/2"-14	1/2"	12.7	29.89	9.5	60.71	27.0
SF AGR 10 12	-	5/8"-14	1/2"	12.7	30.39	9.5	59.90	27.0
SF AGR 10 16	-	5/8"-14	5/8"	15.9	30.39	12.5	66.50	27.0
SF AGR 12 12	-	3/4"-14	1/2"	12.7	31.66	9.5	61.20	32.0
SF AGR 12 16	-	3/4"-14	5/8"	15.9	31.66	12.5	65.70	32.0
SF AGR 12 19	-	3/4"-14	3/4"	19.1	33.16	15.0	64.80	32.0
SF AGR 16 19	-	1"-11	3/4"	19.1	42.51	15.0	81.80	38.0
SF AGR 16 25	-	1"-11	1"	25.4	41.86	19.5	90.17	38.0
SF AGR 20 25	-	1 1/4"-11	1"	25.4	44.89	19.5	91.60	50.0
SF AGR 20 31	-	1 1/4"-11	1 1/4"	31.8	47.04	26.0	101.60	50.0
SF AGR 24 38	-	1 1/2"-11	1 1/2"	38.1	49.04	32.0	107.90	55.0
SF AGR 32 51	-	2"-11	2"	50.8	53.81	42.0	127.20	70.0



SFAGR



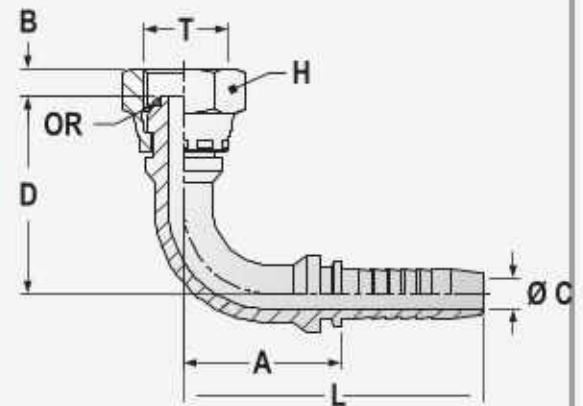
SFDKOR

SFDKOR BSP FEMALE 60° CONE WITH 'O' RING

Part No.	Nut Type	Thread T	Hose Bore	A	B	ØC	L	H	OR	
		Inches	mm	mm	mm	mm	mm	mm	mm	
SFDKOR 04 06	a	1/4"-19	1/4"	6.4	17.40	5.45	4.0	45.40	19.0	6.0x1.0
SFDKOR 06 10	a	3/8"-19	3/8"	9.5	19.00	6.25	7.0	48.72	22.0	8.1x1.8
SFDKOR 08 12	a	1/2"-14	1/2"	12.7	22.85	6.75	9.5	52.35	27.0	12.1x1.6
SFDKOR 10 16	a	5/8"-14	5/8"	15.9	19.60	9.70	12.5	55.70	30.0	13.1x1.6
SFDKOR 12 19	a	3/4"-14	3/4"	19.1	25.46	8.71	15.0	64.70	32.0	17.1x1.6
SFDKOR 16 25	a	1"-11	1"	25.4	24.82	10.74	19.5	71.55	38.0	22.1x1.6
SFDKOR 20 25	a	1 1/4"-11	1"	25.4	27.86	10.11	19.5	74.60	50.0	29.1x1.6
SFDKOR 20 31	a	1 1/4"-11	1 1/4"	31.8	30.01	10.11	26.0	86.20	50.0	29.1x1.6
SFDKOR 24 31	a	1 1/2"-11	1 1/4"	31.8	32.43	12.50	26.0	87.00	55.0	35.1x1.6
SFDKOR 24 38	a	1 1/2"-11	1 1/2"	38.1	32.43	12.50	32.0	90.40	55.0	35.1x1.6
SFDKOR 32 38	a	2"-11	1 1/2"	38.1	30.90	16.11	32.0	88.90	70.0	48.1x1.6
SFDKOR 32 51	a	2"-11	2"	50.8	30.90	16.11	42.0	103.60	70.0	48.1x1.6

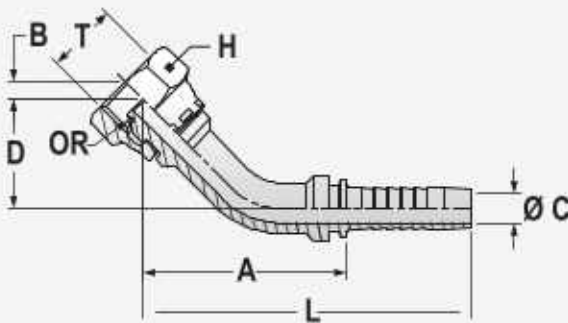
SFDKOR 90° BSP FEMALE 60° CONE WITH 'O' RING

Part No.	Nut Type	Thread T	Hose Bore	A	B	ØC	D	L	H	OR	
		Inches	mm	mm	mm	mm	mm	mm	mm	mm	
SFDKOR 90 04 06	a	1/4"-19	1/4"	6.4	27.00	5.45	4.0	25.0	55.0	19.0	6.0x1.0
SFDKOR 90 06 10	a	3/8"-19	3/8"	9.5	35.78	6.25	7.0	37.5	65.5	22.0	8.1x1.8
SFDKOR 90 08 12	a	1/2"-14	1/2"	12.7	48.00	6.75	9.5	46.0	77.5	27.0	12.1x1.6
SFDKOR 90 10 16	a	5/8"-14	5/8"	15.9	49.96	9.70	12.5	50.0	84.0	30.0	13.1x1.6
SFDKOR 90 12 19	a	3/4"-14	3/4"	19.1	56.26	8.71	15.0	58.0	95.5	32.0	17.1x1.6
SFDKOR 90 16 25	a	1"-11	1"	25.4	77.96	10.74	18.5	67.7	124.7	38.0	22.1x1.6
SFDKOR 90 20 25	a	1 1/4"-11	1"	25.4	77.96	10.11	19.5	71.9	124.7	50.0	29.1x1.6
SFDKOR 90 20 31	a	1 1/4"-11	1 1/4"	31.8	95.47	10.11	26.0	90.0	150.0	50.0	29.1x1.6
SFDKOR 90 24 31	a	1 1/2"-11	1 1/4"	31.8	95.47	12.50	26.0	93.4	150.0	55.0	35.1x1.6
SFDKOR 90 24 38	a	1 1/2"-11	1 1/2"	38.1	117.00	12.50	32.0	104.5	175.0	55.0	35.1x1.6
SFDKOR 90 32 38	a	2"-11	1 1/2"	38.1	117.00	16.11	32.0	109.47	175.0	70.0	48.1x1.6
SFDKOR 90 32 51	a	2"-11	2"	50.8	142.50	16.11	42.0	142.5	215.0	70.0	48.1x1.6



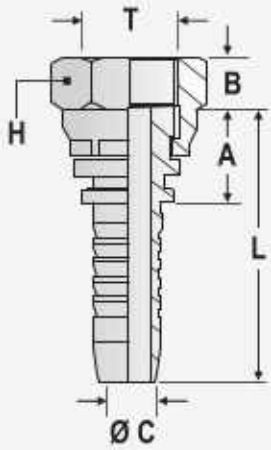
SFDKOR 90°

SFDKOR 45° BSP FEMALE 60° CONE WITH 'O' RING



SFDKOR45°

Part No.	Nut Type	Thread T	Hose Bore	A	B	ØC	D	L	H	OR	
		Inches	mm	mm	mm	mm	mm	mm	mm	mm	
SFDKOR 45 04 06	a	1/4"-19	1/4"	6.4	37.00	5.45	4.00	14.50	65.00	19.0	6.0x1.0
SFDKOR 45 06 10	a	3/8"-19	3/8"	9.5	43.28	6.25	7.00	19.00	73.00	22.0	8.1x1.8
SFDKOR 45 08 12	a	1/2"-14	1/2"	12.7	49.50	6.75	9.50	24.00	79.00	27.0	12.1x1.6
SFDKOR 45 10 16	a	5/8"-14	5/8"	15.9	58.96	9.70	12.50	29.00	93.00	30.0	13.1x1.6
SFDKOR 45 12 19	a	3/4"-14	3/4"	19.1	69.76	8.71	15.00	28.00	109.00	32.0	17.1x1.6
SFDKOR 45 16 25	a	1"-11	1"	25.4	79.66	10.74	19.50	35.20	126.40	38.0	22.1x1.6
SFDKOR 45 20 25	a	1 1/4"-11	1"	31.8	79.66	10.11	19.50	35.20	126.40	50.0	29.1x1.6
SFDKOR 45 20 31	a	1 1/4"-11	1 1/4"	31.8	93.47	10.11	26.00	38.00	148.00	50.0	29.1x1.6
SFDKOR 45 24 31	a	1 1/2"-11	1 1/4"	38.1	93.47	12.50	26.00	38.00	143.00	55.0	35.1x1.6
SFDKOR 45 24 38	a	1 1/2"-11	1 1/2"	38.1	132.00	12.50	32.00	50.00	190.00	55.0	35.1x1.6
SFDKOR 45 32 38	a	2"-11	1 1/2"	38.1	132.00	16.11	32.00	50.00	190.00	70.0	48.1x1.6
SFDKOR 45 32 51	a	2"-11	2"	50.8	157.25	16.11	42.00	60.00	230.00	70.0	48.1x1.6



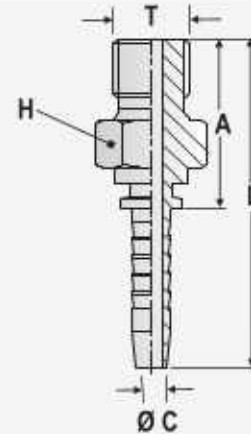
SFDKRF

SFDKRF BSP FEMALE
FLAT FACE

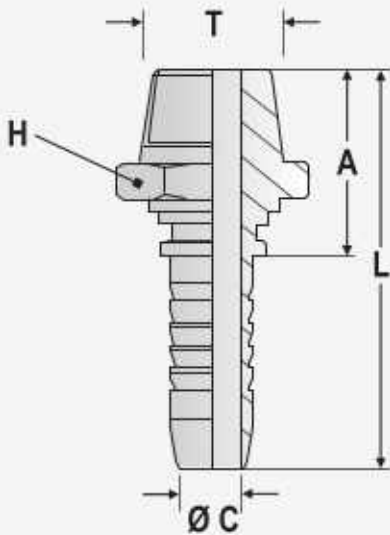
Part No.	Nut Type	Thread T	Hose Bore		A mm	B mm	Ø C mm	L mm	H mm
			Inches	mm					
SFDKRF 04 06	a	1/4"-19	1/4"	6.4	13.90	9.26	4.00	41.90	19.00
SFDKRF 08 08	a	1/2"-14	5/16"	7.9	15.85	12.80	5.50	43.90	27.00
SFDKRF 08 10	a	1/2"-14	3/8"	9.5	15.67	12.80	7.00	45.39	27.00
SFDKRF 08 12	a	1/2"-14	1/2"	12.7	16.85	12.80	9.50	46.40	27.00
SFDKRF 12 12	a	3/4"-14	1/2"	12.7	17.82	14.85	9.50	47.30	32.00
SFDKRF 12 16	a	3/4"-14	5/8"	15.9	17.82	14.85	12.50	51.44	32.00
SFDKRF 12 19	a	3/4"-14	3/4"	19.1	19.32	14.85	15.00	58.50	32.00

SFAGR F BSP MALE
FLAT SEAT

Part No.	Nut Type	Thread T	Hose Bore		A mm	Ø C mm	L mm	H mm
			Inches	mm				
SFAGR F 04 06	-	1/4"-19	1/4"	6.4	22.94	4.00	50.24	19.00
SFAGR F 06 10	-	3/8"-19	3/8"	9.5	24.19	7.00	53.91	22.00
SFAGR F 08 10	-	1/2"-14	3/8"	9.5	27.21	7.00	56.90	27.00
SFAGR F 08 12	-	1/2"-14	1/2"	12.7	28.40	9.50	57.90	27.00
SFAGR F 12 19	-	3/4"-14	3/4"	19.1	33.16	15.00	72.40	32.00



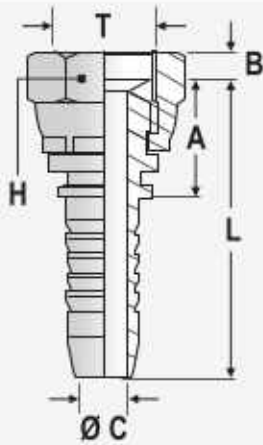
SFAGR F



SFAGR K

SFAGR K BSP
MALE T-APERED

Part No.	Nut Type	Thread T	Hose Bore		A mm	Ø C mm	L mm	H mm
			Inches	mm				
SFAGR K 02 06	-	1/8"-28	1/4"	6.4	25.66	4.00	53.66	14.00
SFAGR K 04 06	-	1/4"-19	1/4"	6.4	29.72	4.00	57.72	19.00
SFAGR K 06 06	-	3/8"-19	1/4"	6.4	30.48	4.00	52.30	22.00
SFAGR K 06 08	-	3/8"-19	5/16"	7.9	30.66	5.50	58.66	22.00
SFAGR K 06 10	-	3/8"-19	3/8"	9.5	30.48	7.00	60.20	22.00
SFAGR K 08 10	-	1/2"-14	3/8"	9.5	36.32	7.00	66.04	27.00
SFAGR K 08 12	-	1/2"-14	1/2"	12.7	37.51	9.50	67.00	27.00
SFAGR K 12 16	-	3/4"-14	5/8"	15.9	39.79	12.50	73.83	32.00
SFAGR K 12 19	-	3/4"-14	3/4"	19.1	41.29	15.00	80.50	32.00
SFAGR K 16 19	-	1"-11	3/4"	19.1	50.18	15.00	89.40	38.00
SFAGR K 16 25	-	1"-11	1"	25.4	49.53	19.50	96.27	38.00
SFAGR K 20 25	-	1 1/4"-11	1"	25.4	54.86	19.50	101.60	50.00
SFAGR K 20 31	-	1 1/4"-11	1 1/4"	31.8	57.52	26.00	112.00	50.00
SFAGR K 24 38	-	1 1/2"-11	1 1/2"	38.1	58.54	32.00	118.27	55.00
SFAGR K 32 51	-	2"-11	2"	50.8	63.39	42.00	138.14	70.00



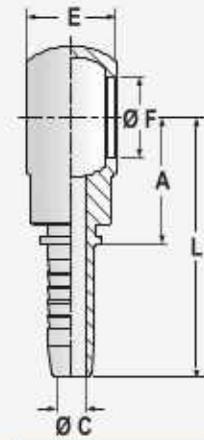
SFDKRI

SFDKRI BSP FEMALE 60° INVERTED CONE
JIS(JAPANESE INDUSTRIAL STD)

Part No.	Nut Type	Thread T	Hose Bore		A mm	B mm	Ø C mm	L mm	H mm
			Inches	mm					
SFDKRI 04 06	a	1/4"-19	1/4"	6.4	14.48	8.88	4.00	41.78	19.00
SFDKRI 06 10	a	3/8"-19	3/8"	9.5	15.50	10.52	7.00	45.21	22.00
SFDKRI 08 12	a	1/2"-14	1/2"	12.7	17.23	12.42	9.50	48.06	27.00
SFDKRI 12 19	a	3/4"-14	3/4"	19.1	23.13	10.79	15.00	63.30	32.00
SFDKRI 16 25	a	1"-11	1"	25.4	24.00	11.05	19.50	70.74	38.00
SFDKRI 20 31	a	1 1/4"-11	1 1/4"	31.8	25.64	13.34	26.00	78.66	50.00
SFDKRI 24 38	a	1 1/2"-11	1 1/2"	38.1	28.31	16.61	32.00	84.53	55.00

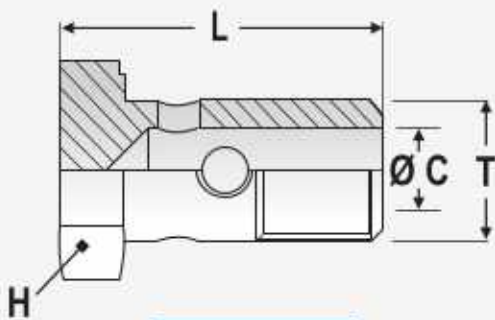
SFRNR BSP BANJO

Part No.	Thread T	Hose Bore		Ø F mm	A mm	Ø C mm	L mm	E mm
		Inches	mm					
SFRNR 04 06	1/4"-19	1/4"	6.4	13.32	21.00	4.00	49.00	14.00
SFRNR 06 08	3/8"-19	5/16"	7.9	16.76	24.46	5.50	52.00	18.00
SFRNR 06 10	3/8"-19	3/8"	9.5	16.76	24.28	7.00	54.00	18.00
SFRNR 08 10	1/2"-14	3/8"	9.5	21.00	29.82	7.00	59.50	22.00
SFRNR 08 12	1/2"-14	1/2"	12.7	21.00	31.00	9.50	60.50	22.00
SFRNR 10 12	5/8"-14	1/2"	12.7	23.00	33.50	9.50	63.00	23.70
SFRNR 10 16	5/8"-14	5/8"	15.9	23.00	33.50	12.50	67.50	23.70
SFRNR 12 19	3/4"-14	3/4"	19.1	26.50	39.00	15.00	78.20	29.00
SFRNR 16 19	1"-11	3/4"	19.1	33.30	48.50	15.00	71.70	38.00



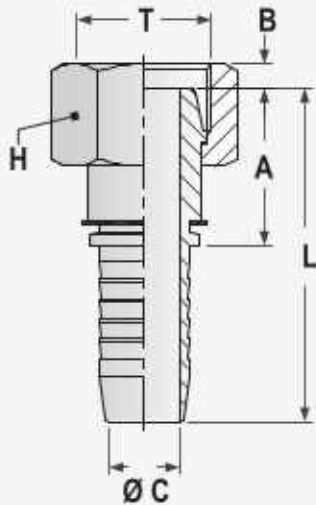
SFRNR

SFF 15 R BSP BOLT
FOR BANJO



SFF15R

Part No.	Thread T	Hose Bore		Ø C mm	L mm	H mm
		Inches	mm			
SFF15 R 04	1/4"-19	1/4"	6.4	7.00	30.70	17.00
SFF15 R 06	3/8"-19	3/8"	9.1	9.00	38.30	22.00
SFF15 R 08	1/2"-14	1/2"	12.7	12.00	48.30	27.00
SFF15 R 12	3/4"-14	3/4"	19.1	16.00	56.20	32.00
SFF15 R 16	1"-11	1"	25.4	21.00	70.45	41.00



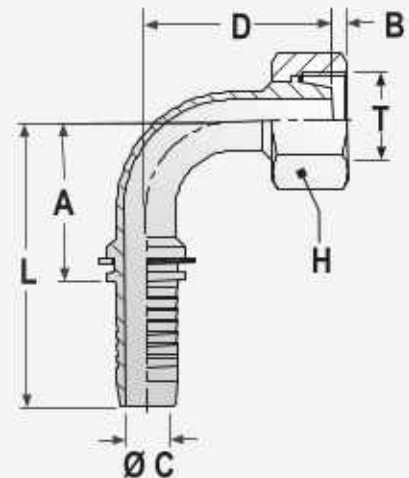
SFDKL

SFDKL METRIC FEMALE 24° CONE LIGHT WITHOUT 'O' RING

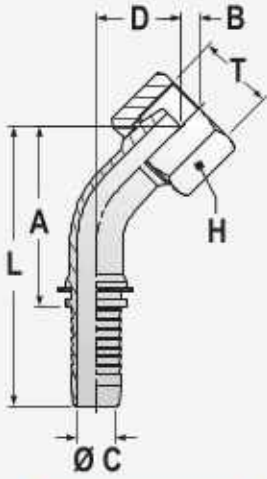
Part No.	Nut Type	Thread T	Hose Bore		A mm	B mm	Ø C mm	L mm	H mm
			Inches	mm					
SF DKL 06 06	a	12x1.5	1/4"	6.4	19.79	5.11	4.00	47.10	17.00
SF DKL 08 06	b	14x1.5	1/4"	6.4	22.10	0.33	4.00	50.10	17.00
SF DKL 10 06	b	16x1.5	1/4"	6.4	20.83	0.84	4.00	48.76	19.00
SF DKL 10 08	b	16x1.5	5/16"	7.9	22.86	0.84	5.50	50.90	19.00
SF DKL 10 10	a	16x1.5	3/8"	9.5	25.02	5.39	7.00	54.74	19.00
SF DKL 12 06	b	18x1.5	1/4"	6.4	22.86	0.84	4.00	50.86	22.00
SF DKL 12 08	b	18x1.5	5/16"	7.9	22.86	0.84	5.50	51.00	22.00
SF DKL 12 10	b	18x1.5	3/8"	9.5	22.99	0.84	7.00	52.71	22.00
SF DKL 15 10	b	22x1.5	3/8"	9.5	24.77	1.83	7.00	54.50	27.00
SF DKL 15 12	b	22x1.5	1/2"	12.7	25.66	1.83	9.50	56.90	27.00
SF DKL 18 12	b	26x1.5	1/2"	12.7	26.67	1.83	9.50	57.90	32.00
SF DKL 18 16	b	26x1.5	5/8"	15.9	26.08	1.83	12.50	60.12	32.00
SF DKL 22 19	b	30x2.0	3/4"	19.1	29.71	2.31	15.00	68.95	36.00
SF DKL 28 25	b	36x2.0	1"	25.4	31.75	2.44	19.50	78.49	41.00
SF DKL 35 31	b	45x2.0	1 1/4"	31.8	36.88	2.64	26.00	91.40	50.00
SF DKL 42 38	b	52x2.0	1 1/2"	38.1	39.67	4.67	32.00	97.70	60.00

SFDKL 90° METRIC FEMALE 24° CONE LIGHT WITHOUT 'O' RING

Part No.	Nut Type	Thread T	Hose Bore		A mm	B mm	Ø C mm	D mm	L mm	H mm
			Inches	mm						
SFDKL 90 06 06	a	12 x 1.5	1/4"	6.4	26.00	5.11	4.00	32.00	54.00	17.00
SFDKL 90 08 06	b	14 x 1.5	1/4"	6.4	26.00	0.33	4.00	32.00	54.00	17.00
SFDKL 90 10 06	b	16 x 1.5	1/4"	6.4	26.00	0.84	4.00	32.00	54.00	19.00
SFDKL 90 10 08	b	16 x 1.5	5/16"	7.9	34.00	0.84	5.50	36.00	62.00	19.00
SFDKL 90 10 10	a	16 x 1.5	3/8"	9.5	34.78	5.39	7.00	41.50	64.50	19.00
SFDKL 90 12 08	b	18 x 1.5	5/16"	7.9	34.00	0.84	5.50	38.00	62.00	22.00
SFDKL 90 12 10	b	18 x 1.5	3/8"	9.5	35.58	0.84	7.00	41.00	65.30	22.00
SFDKL 90 15 12	b	22 x 1.5	1/2"	12.7	45.26	1.83	9.50	45.00	76.50	27.00
SFDKL 90 18 16	b	26 x 1.5	5/8"	15.9	50.96	1.83	12.50	52.00	85.00	32.00
SFDKL 90 22 19	b	30 x 2.0	3/4"	19.1	58.76	2.31	15.00	59.00	98.00	36.00
SFDKL 90 28 25	b	36 x 2.0	1"	25.4	78.26	2.44	19.50	69.00	125.00	41.00
SFDKL 90 35 31	b	45 x 2.0	1 1/4"	31.8	97.27	2.64	26.00	89.00	151.80	50.00
SFDKL 90 42 38	b	52 x 2.0	1 1/2"	38.1	117.00	4.67	32.00	107.00	175.00	60.00



SFDKL 90°



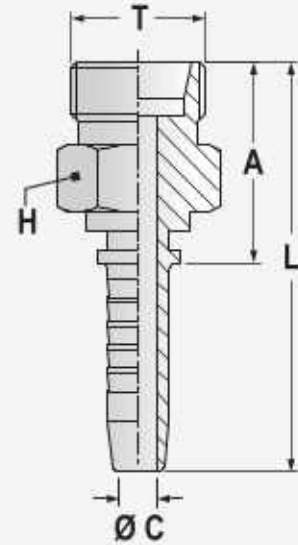
SFDKL 45°

SFDKL 45° METRIC FEMALE 24 CONE LIGHT WITHOUT 'O' RING

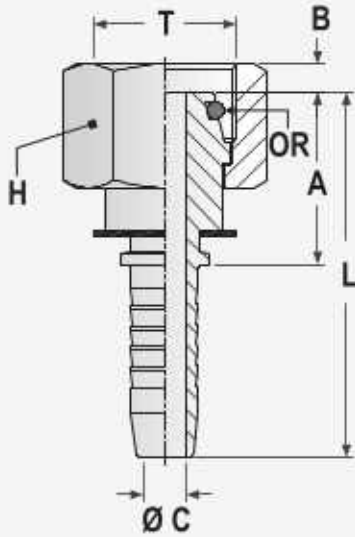
Part No.	Nut Type	Thread T	Hose Bore		A mm	B mm	Ø C mm	D mm	L mm	H mm
			Inches	mm						
SFDKL 45 08 06	b	14 x 1.5	1/4"	6.4	37.00	0.33	4.00	17.00	65.00	17.00
SFDKL 45 10 06	b	16 x 1.5	1/4"	6.4	37.00	0.84	4.00	17.00	65.00	19.00
SFDKL 45 10 08	b	16 x 1.5	5/16"	7.9	45.00	0.84	5.50	18.00	73.00	19.00
SFDKL 45 10 10	a	16 x 1.5	3/8"	9.5	43.28	5.39	7.00	22.00	73.00	19.00
SFDKL 45 12 10	b	18 x 1.5	3/8"	9.5	43.28	0.84	7.00	18.00	73.00	22.00
SFDKL 45 15 12	b	22 x 1.5	1/2"	12.7	46.76	1.83	9.50	19.00	78.00	27.00
SFDKL 45 18 16	b	26 x 1.5	5/8"	15.9	52.96	1.83	12.50	30.00	87.00	32.00
SFDKL 45 22 19	b	30 x 2.0	3/4"	19.1	66.76	2.31	15.00	26.00	106.00	36.00
SFDKL 45 28 25	b	36 x 2.0	1"	25.4	83.26	2.44	19.50	30.00	130.00	41.00
SFDKL 45 35 31	b	45 x 2.0	1 1/4"	31.8	93.47	2.64	26.00	41.00	148.00	50.00
SFDKL 45 42 38	b	52 x 2.0	1 1/2"	38.1	132.00	4.67	32.00	52.00	190.00	60.00

SFCEL METRIC MALE 24° DIN 3861 LIGHT

Part No.	Thread T	Hose Bore		A mm	Ø C mm	L mm	H mm
		Inches	mm				
SFCEL 06 06	12 x 1.5	1/4"	6.4	22.46	4.00	50.46	14.00
SFCEL 08 06	14 x 1.5	1/4"	6.4	22.36	4.00	50.36	17.00
SFCEL 10 06	16 x 1.5	1/4"	6.4	23.88	4.00	51.48	17.00
SFCEL 10 08	16 x 1.5	5/16"	7.9	23.88	5.50	51.80	17.00
SFCEL 10 10	16 x 1.5	3/8"	9.5	23.88	7.00	53.59	17.00
SFCEL 12 06	18 x 1.5	1/4"	6.4	23.88	4.00	51.80	19.00
SFCEL 12 08	18 x 1.5	5/16"	7.9	23.88	5.50	53.70	19.00
SFCEL 12 10	18 x 1.5	3/8"	9.5	23.88	7.00	53.59	19.00
SFCEL 15 10	22 x 1.5	3/8"	9.5	28.35	7.00	58.06	22.00
SFCEL 15 12	22 x 1.5	1/2"	12.7	29.02	9.50	58.50	22.00
SFCEL 18 12	26 x 1.5	1/2"	12.7	27.60	9.50	57.10	27.00
SFCEL 18 16	26 x 1.5	5/8"	15.9	27.60	12.50	61.60	27.00
SFCEL 22 19	30 x 2.0	3/4"	19.1	31.13	15.00	70.37	32.00
SFCEL 28 25	36 x 2.0	1"	25.4	31.63	19.50	78.37	36.00
SFCEL 35 31	45 x 2.0	1 1/4"	31.8	37.71	26.00	92.20	46.00
SFCEL 42 38	52 x 2.0	1 1/2"	38.1	40.25	32.00	98.00	55.00



SFCEL



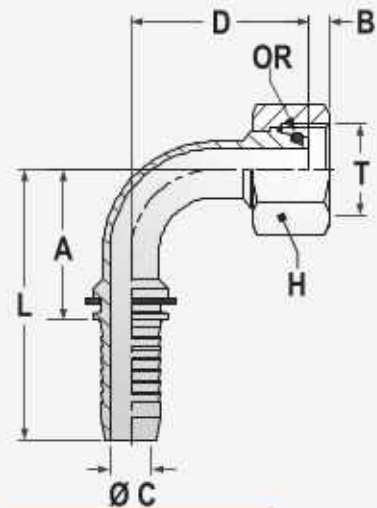
SFDKOL

SFDKOL METRIC FEMALE 24° CONE DIN
3865 LIGHT WITH 'O' RING

Part No.	Nut Type	Thread T	Hose Bore		A mm	B mm	Ø C mm	L mm	H mm	OR mm
			Inches	mm						
SFDKOL 06 06	a	12 x 1.5	1/4"	6.4	19.79	5.11	4.00	47.10	17.00	4.0x1.5
SFDKOL 08 06	b	14 x 1.5	1/4"	6.4	22.10	0.33	4.00	50.10	17.00	6.0x1.5
SFDKOL 10 06	b	16 x 1.5	1/4"	6.4	20.83	0.84	4.00	48.76	19.00	7.5x1.5
SFDKOL 10 08	b	16 x 1.5	5/16"	7.9	22.86	0.84	5.50	50.90	19.00	7.5x1.5
SFDKOL 10 10	a	16 x 1.5	3/8"	9.5	25.02	5.39	7.00	54.74	19.00	7.5x1.5
SFDKOL 12 06	b	18 x 1.5	1/4"	6.4	22.86	0.84	4.00	50.86	22.00	9.0x1.5
SFDKOL 12 08	b	18 x 1.5	5/16"	7.9	22.86	0.84	5.50	51.00	22.00	9.0x1.5
SFDKOL 12 10	b	18 x 1.5	3/8"	9.5	22.99	0.84	7.00	52.71	22.00	9.0x1.5
SFDKOL 15 10	b	22 x 1.5	3/8"	9.5	24.77	1.83	7.00	54.50	27.00	12.0x2.0
SFDKOL 15 12	b	22 x 1.5	1/2"	12.7	25.66	1.83	9.50	56.90	27.00	12.0x2.0
SFDKOL 18 12	b	26 x 1.5	1/2"	12.7	26.67	1.83	9.50	57.90	32.00	15.0x2.0
SFDKOL 18 16	b	26 x 1.5	5/8"	15.9	26.08	1.83	12.50	60.12	32.00	15.0x2.0
SFDKOL 22 19	b	30 x 2.0	3/4"	19.1	29.71	2.31	15.00	68.95	36.00	20.0x2.0
SFDKOL 28 25	b	36 x 2.0	1"	25.4	31.75	2.44	19.50	78.49	41.00	26.0x2.0
SFDKOL 35 31	b	45 x 2.0	1 1/4"	31.8	36.88	2.64	26.00	91.40	50.00	32.0x2.5
SFDKOL 42 38	b	52 x 2.0	1 1/2"	38.1	39.67	4.67	32.00	97.70	60.00	38.0x2.5

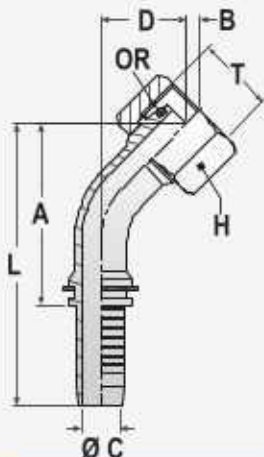
SFDKOL 90° METRIC FEMALE 24° CONE DIN
3865 LIGHT WITH 'O' RING

Part No.	Nut Type	Thread T	Hose Bore		A mm	B mm	Ø C mm	D mm	L mm	H mm	OR mm
			Inches	mm							
SFDKOL 90 06 06	a	12 x 1.5	1/4"	6.4	26.00	5.11	4.00	32.00	54.00	17.00	4.0x1.5
SFDKOL 90 08 06	b	14 x 1.5	1/4"	6.4	28.00	0.33	4.00	32.00	54.00	17.00	6.0x1.5
SFDKOL 90 10 06	b	16 x 1.5	1/4"	6.4	26.00	0.84	4.00	32.00	54.00	19.00	7.5x1.5
SFDKOL 90 10 08	b	16 x 1.5	5/16"	7.9	34.00	0.84	5.50	36.00	62.00	19.00	7.5x1.5
SFDKOL 90 10 10	a	16 x 1.5	3/8"	9.5	34.78	5.39	7.00	41.50	64.50	19.00	7.5x1.5
SFDKOL 90 12 08	b	18 x 1.5	5/16"	7.9	34.00	0.84	5.50	38.00	62.00	22.00	9.0x1.5
SFDKOL 90 12 10	b	18 x 1.5	3/8"	9.5	35.58	0.84	7.00	41.00	65.30	22.00	9.0x1.5
SFDKOL 90 15 12	b	22 x 1.5	1/2"	12.7	45.26	1.83	9.50	45.00	76.50	27.00	12.0x2.0
SFDKOL 90 18 16	b	26 x 1.5	5/8"	15.9	50.96	1.83	12.50	52.00	85.00	32.00	15.0x2.0
SFDKOL 90 22 19	b	30 x 2.0	3/4"	19.1	58.76	2.31	15.00	59.00	98.00	36.00	20.0x2.0
SFDKOL 90 28 25	b	36 x 2.0	1"	25.4	78.26	2.44	19.50	69.00	125.00	41.00	26.0x2.0
SFDKOL 90 35 31	b	45 x 2.0	1 1/4"	31.8	97.27	2.64	26.00	89.00	151.00	50.00	32.0x2.5
SFDKOL 90 42 38	b	52 x 2.0	1 1/2"	38.1	117.00	4.67	32.00	107.00	175.00	60.00	38.0x2.5



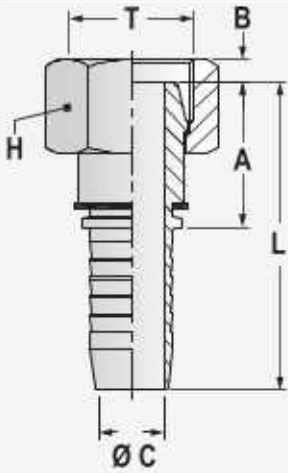
SFDKOL 90°

SFDKOL 45° METRIC FEMALE 24° CONE DIN
3865 LIGHT WITH 'O' RING



SFDKOL 45°

Part No.	Nut Type	Thread T	Hose Bore		A mm	B mm	Ø C mm	D mm	L mm	H mm	OR mm
			Inches	mm							
SFDKOL 45 08 06	b	14 x 1.5	1/4"	6.4	37.00	0.33	4.00	17.00	65.00	17.00	6.0x1.5
SFDKOL 45 10 06	b	16 x 1.5	1/4"	6.4	37.00	0.84	4.00	17.00	65.00	19.00	7.5x1.5
SFDKOL 45 10 08	b	16 x 1.5	5/16"	7.9	45.00	0.84	5.50	18.00	73.00	19.00	7.5x1.5
SFDKOL 45 10 10	a	16 x 1.5	3/8"	9.5	43.28	5.39	7.00	22.00	73.00	19.00	7.5x1.5
SFDKOL 45 12 10	b	18 x 1.5	3/8"	9.5	43.28	0.84	7.00	18.00	73.00	22.00	9.0x1.5
SFDKOL 45 15 12	b	22 x 1.5	1/2"	12.7	46.76	1.83	9.50	19.00	78.00	27.00	12.0x2.0
SFDKOL 45 18 16	b	26 x 1.5	5/8"	15.9	52.96	1.83	12.50	30.00	87.00	32.00	15.0x2.0
SFDKOL 45 22 19	b	30 x 2.0	3/4"	19.1	66.78	2.31	15.00	26.00	106.00	36.00	20.0x2.0
SFDKOL 45 28 25	b	36 x 2.0	1"	25.4	83.26	2.44	19.50	30.00	130.00	41.00	26.0x2.0
SFDKOL 45 35 31	b	45 x 2.0	1 1/4"	31.8	93.47	2.64	26.00	41.00	148.00	50.00	32.0x2.5
SFDKOL 45 42 38	b	52 x 2.0	1 1/2"	38.1	132.00	4.67	32.00	52.00	190.00	60.00	38.0x2.5



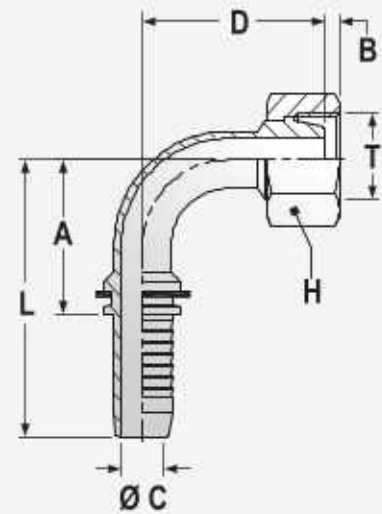
SFDKS

SFDKS METRIC FEMALE 24° CONE HEAVY WITHOUT 'O' RING

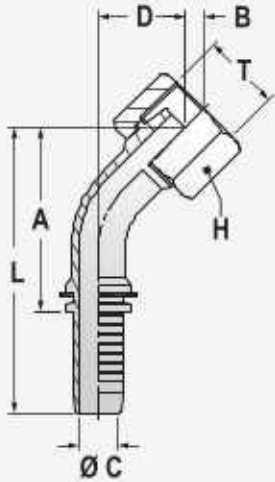
Part No.	Nut Type	Thread T	Hose Bore		A mm	B mm	Ø C mm	L mm	H mm
			Inches	mm					
SFDKS 08 06	b	16 x 1.5	1/4"	6.4	24.00	2.08	4.00	50.60	19.00
SFDKS 10 06	b	18 x 1.5	1/4"	6.4	25.02	2.08	4.00	53.00	22.00
SFDKS 12 08	b	20 x 1.5	5/16"	7.9	25.02	2.08	5.50	53.00	24.00
SFDKS 12 10	b	20 x 1.5	3/8"	9.5	25.15	2.08	7.00	54.87	24.00
SFDKS 14 10	b	22 x 1.5	3/8"	9.5	28.07	3.83	7.00	57.79	27.00
SFDKS 16 12	b	24 x 1.5	1/2"	12.7	29.21	4.08	9.50	60.45	30.00
SFDKS 20 16	b	30 x 2.0	5/8"	15.9	32.42	3.14	12.50	66.46	36.00
SFDKS 20 19	b	30 x 2.0	3/4"	19.1	33.52	3.14	15.00	72.80	36.00
SFDKS 25 19	b	36 x 2.0	3/4"	19.1	34.54	3.15	15.00	73.78	46.00
SFDKS 25 25	b	36 x 2.0	1"	25.4	38.10	2.77	19.50	84.84	46.00
SFDKS 30 25	b	42 x 2.0	1"	25.4	38.10	5.77	19.50	84.84	50.00
SFDKS 38 31	b	52 x 2.0	1 1/4"	31.8	45.26	9.77	26.00	99.80	60.00

SFDKS 90° METRIC FEMALE 24° CONE HEAVY WITHOUT 'O' RING

Part No.	Nut Type	Thread T	Hose Bore		A mm	B mm	Ø C mm	D mm	L mm	H mm
			Inches	mm						
SFDKS 90 08 06	b	16 x 1.5	1/4"	6.4	26.00	2.08	4.0	33.00	54.00	19.00
SFDKS 90 10 06	b	18 x 1.5	1/4"	6.4	26.00	2.08	4.0	31.00	54.00	22.00
SFDKS 90 12 08	b	20 x 1.5	5/16"	7.9	34.00	2.08	5.50	40.00	62.00	24.00
SFDKS 90 12 10	b	20 x 1.5	3/8"	9.5	36.29	2.08	7.0	42.00	66.00	24.00
SFDKS 90 14 10	b	22 x 1.5	3/8"	9.5	36.29	3.83	7.0	45.00	66.00	27.00
SFDKS 90 16 12	b	24 x 1.5	1/2"	12.7	45.26	4.08	9.50	46.00	76.50	30.00
SFDKS 90 20 16	b	30 x 2.0	5/8"	15.9	51.56	3.14	12.5	56.50	85.60	36.00
SFDKS 90 20 19	b	30 x 2.0	3/4"	19.1	58.26	3.14	15.0	59.70	97.50	36.00
SFDKS 90 25 19	b	36 x 2.0	3/4"	19.1	58.26	3.15	15.0	61.50	97.50	46.00
SFDKS 90 25 25	b	36 x 2.0	1"	25.4	78.26	2.77	19.5	72.40	125.00	46.00
SFDKS 90 30 25	b	42 x 2.0	1"	25.4	78.26	5.77	19.5	79.00	125.00	50.00
SFDKS 90 38 31	b	52 x 2.0	1 1/4"	31.8	97.27	9.77	26.0	97.20	151.80	60.00



SFDKS 90°



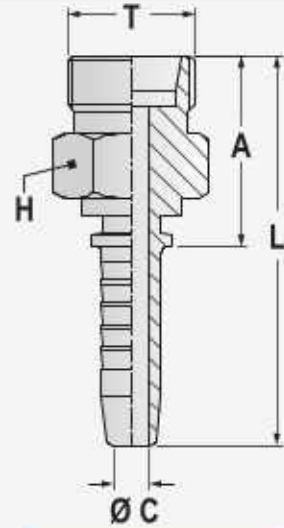
SFDKS 45°

SFDKS 45° METRIC FEMALE 24° CONE HEAVY WITHOUT 'O' RING

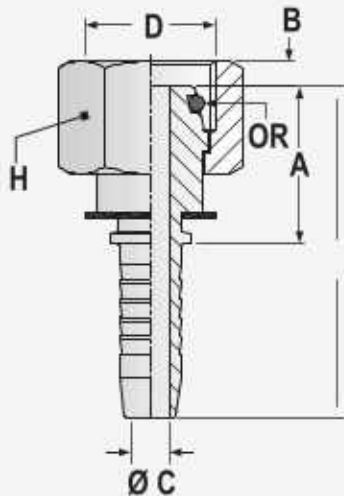
Part No.	Nut Type	Thread T	Hose Bore		A mm	B mm	Ø C mm	D mm	L mm	H mm
			Inches	mm						
SFDKS 45 08 06	b	16 x 1.5	1/4"	6.4	26.00	2.08	4.0	18.00	65.00	19.00
SFDKS 45 10 06	b	18 x 1.5	1/4"	6.4	26.00	2.08	4.0	16.00	65.00	22.00
SFDKS 45 12 08	b	20 x 1.5	5/16"	7.9	45.00	2.08	5.50	22.00	73.00	24.00
SFDKS 45 12 10	b	20 x 1.5	3/8"	9.5	43.28	2.08	7.0	21.00	73.00	24.00
SFDKS 45 14 10	b	22 x 1.5	3/8"	9.5	43.28	3.83	7.0	22.00	73.00	27.00
SFDKS 45 16 12	b	24 x 1.5	1/2"	12.7	49.76	4.08	9.5	22.00	81.00	30.00
SFDKS 45 20 16	b	30 x 2.0	5/8"	15.9	58.96	3.14	12.5	33.00	93.00	36.00
SFDKS 45 20 19	b	30 x 2.0	3/4"	19.1	64.98	3.14	15.0	28.20	105.00	36.00
SFDKS 45 25 19	b	36 x 2.0	3/4"	19.1	66.76	3.15	15.0	30.00	106.00	46.00
SFDKS 45 25 25	b	36 x 2.0	1"	25.4	76.66	2.77	19.5	28.40	124.00	46.00
SFDKS 45 30 25	b	42 x 2.0	1"	25.4	83.26	5.77	19.5	35.00	130.00	50.00
SFDKS 45 38 31	b	52 x 2.0	1 1/4"	31.8	99.47	9.77	26.0	46.00	154.00	60.00

SFCES METRIC MALE 24° DIN FEMALE 24° CONE DIN 3861 HEAVY

Part No.	Thread T	Hose Bore		A mm	Ø C mm	L mm	H mm
		Inches	mm				
SFCES 08 06	16 x 1.5	1/4"	6.4	27.18	4.00	55.18	17.00
SFCES 10 06	18 x 1.5	1/4"	6.4	27.18	4.00	54.48	19.00
SFCES 10 08	18 x 1.5	5/16"	7.9	27.18	5.50	55.10	22.00
SFCES 10 10	18 x 1.5	3/8"	9.5	27.18	7.00	56.90	22.00
SFCES 12 08	20 x 1.5	5/16"	7.9	27.18	5.50	55.02	22.00
SFCES 12 10	20 x 1.5	3/8"	9.5	27.18	7.00	56.90	22.00
SFCES 14 10	22 x 1.5	3/8"	9.5	29.21	7.00	58.93	22.00
SFCES 14 12	22 x 1.5	1/2"	12.7	30.39	9.50	59.90	24.00
SFCES 16 12	24 x 1.5	1/2"	12.7	32.43	9.50	63.25	24.00
SFCES 20 16	30 x 2.0	5/8"	15.9	38.52	12.50	72.50	30.00
SFCES 20 19	30 x 2.0	3/4"	19.1	40.02	15.00	79.26	30.00
SFCES 25 19	36 x 2.0	3/4"	19.1	42.05	15.00	81.30	41.00
SFCES 25 25	36 x 2.0	1"	25.4	41.40	19.50	88.14	41.00
SFCES 30 25	42 x 2.0	1"	25.4	43.44	19.50	90.17	46.00
SFCES 38 31	52 x 2.0	1 1/4"	31.8	51.43	26.00	106.00	55.00



SFCES



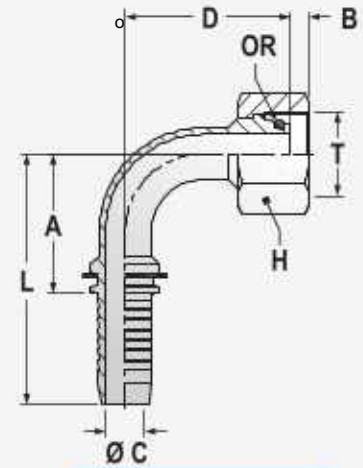
SFDKOS

**SFDKOS METRIC FEMALE 24° CONE DIN
3865 HEAVY WITH 'O' RING**

Part No.	Nut Type	Thread T	Hose Bore Inches	mm	A mm	B mm	Ø C mm	L mm	H mm	OR mm
SFDKOS 08 06	b	16 x 1.5	1/4"	6.4	24.00	2.08	4.0	50.60	19.00	6x1.5
SFDKOS 10 06	b	18 x 1.5	1/4"	6.4	25.02	2.08	4.0	53.00	22.00	7.5x1.5
SFDKOS 12 08	b	20 x 1.5	5/16"	7.9	25.02	2.08	5.5	53.00	24.00	9x1.5
SFDKOS 12 10	b	20 x 1.5	3/8"	9.5	25.15	2.08	7.0	54.87	24.00	9x1.5
SFDKOS 14 10	b	22 x 1.5	3/8"	9.5	28.07	3.83	7.0	57.79	27.00	10x2
SFDKOS 16 12	b	24 x 1.5	1/2"	12.7	29.21	4.08	9.5	60.45	30.00	12x2
SFDKOS 20 16	b	30 x 2.0	5/8"	15.9	32.42	3.14	12.5	66.46	36.00	16x2.5
SFDKOS 20 19	b	30 x 2.0	3/4"	19.1	33.52	3.14	15.0	72.80	36.00	16x2.5
SFDKOS 25 19	b	36 x 2.0	3/4"	19.1	34.54	3.15	15.0	73.78	46.00	20x2.5
SFDKOS 25 25	b	36 x 2.0	1"	25.4	38.10	2.77	19.5	84.84	46.00	20x2.5
SFDKOS 30 25	b	42 x 2.0	1"	25.4	38.10	5.77	19.5	84.84	50.00	25x2.5
SFDKOS 38 31	b	52 x 2.0	1 1/4"	31.8	45.26	9.77	26.0	99.80	60.00	33x2.5

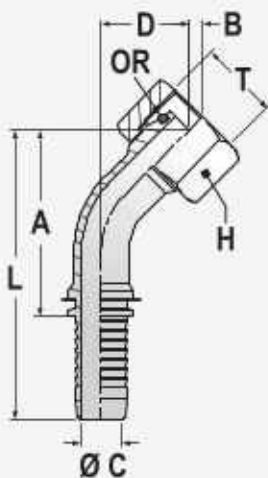
**SFDKOS 90° METRIC FEMALE 24° CONE DIN
3865 HEAVY WITH 'O' RING**

Part No.	Nut Type	Thread T	Hose Bore Inches	mm	A mm	B mm	Ø C mm	D mm	L mm	H mm	OR mm
SFDKOS 90 08 06	b	16 x 1.5	1/4"	6.4	26.00	2.08	4.0	33.00	54.00	19.00	6x1.5
SFDKOS 90 10 06	b	18 x 1.5	1/4"	6.4	26.00	2.08	4.0	31.00	54.00	22.00	7.5x1.5
SFDKOS 90 12 08	b	20 x 1.5	5/16"	7.9	34.00	2.08	5.5	40.00	62.00	24.00	9x1.5
SFDKOS 90 12 10	b	20 x 1.5	3/8"	9.5	36.29	2.08	7.0	42.00	66.00	24.00	9x1.5
SFDKOS 90 14 10	b	22 x 1.5	3/8"	9.5	36.29	3.83	7.0	45.00	66.00	27.00	10x2
SFDKOS 90 16 12	b	24 x 1.5	1/2"	12.7	45.26	4.08	9.5	46.00	76.50	30.00	12x2
SFDKOS 90 20 16	b	30 x 2.0	5/8"	15.9	51.56	3.14	12.5	56.50	85.80	36.00	16x2.5
SFDKOS 90 20 19	b	30 x 2.0	3/4"	19.1	58.26	3.14	15.0	59.70	97.50	36.00	16x2.5
SFDKOS 90 25 19	b	36 x 2.0	3/4"	19.1	58.26	3.15	15.0	61.50	97.50	46.00	20x2.5
SFDKOS 90 25 25	b	36 x 2.0	1"	25.4	78.26	2.77	19.5	72.40	125.00	46.00	20x2.5
SFDKOS 90 30 25	b	42 x 2.0	1"	25.4	78.26	5.77	19.5	79.00	125.00	50.00	25x2.5
SFDKOS 90 38 31	b	52 x 2.0	1 1/4"	31.8	97.27	9.77	26.0	97.20	151.80	60.00	33x2.5



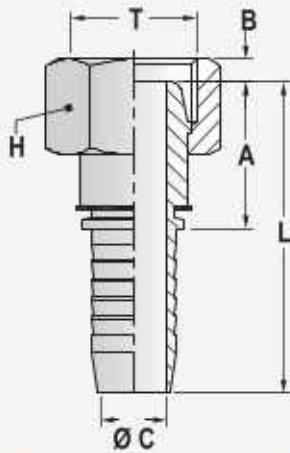
SFDKOS 90°

**SFDKOS 45° METRIC FEMALE 24° CONE DIN
3865 HEAVY WITH 'O' RING**



SFDKOS 45°

Part No.	Nut Type	Thread T	Hose Bore Inches	mm	A mm	B mm	Ø C mm	D mm	L mm	H mm	OR mm
SFDKOS 45 08 06	b	16 x 1.5	1/4"	6.4	26.00	2.08	4.0	18.00	65.00	19.00	6x1.5
SFDKOS 45 10 06	b	18 x 1.5	1/4"	6.4	26.00	2.08	4.0	18.00	65.00	22.00	7.5x1.5
SFDKOS 45 12 08	b	20 x 1.5	5/16"	7.9	45.00	2.08	5.5	22.00	73.00	24.00	9x1.5
SFDKOS 45 12 10	b	20 x 1.5	3/8"	9.5	43.28	2.08	7.0	21.00	73.00	24.00	9x1.5
SFDKOS 45 14 10	b	22 x 1.5	3/8"	9.5	43.28	3.83	7.0	22.00	73.00	27.00	10x2.0
SFDKOS 45 16 12	b	24 x 1.5	1/2"	12.7	49.76	4.08	9.5	22.00	81.00	30.00	12x2.0
SFDKOS 45 20 16	b	30 x 2.0	5/8"	15.9	58.96	3.14	12.5	33.00	93.00	36.00	16x2.5
SFDKOS 45 20 19	b	30 x 2.0	3/4"	19.1	64.98	3.14	15.0	28.20	105.00	36.00	16x2.5
SFDKOS 45 25 19	b	36 x 2.0	3/4"	19.1	66.76	3.15	15.0	30.00	106.00	46.00	20x2.5
SFDKOS 45 25 25	b	36 x 2.0	1"	25.4	76.68	2.77	19.5	28.40	124.00	46.00	20x2.5
SFDKOS 45 30 25	b	42 x 2.0	1"	25.4	83.26	5.77	19.5	35.00	130.00	50.00	25x2.5
SFDKOS 45 38 31	b	52 x 2.0	1 1/4"	31.8	99.47	9.77	26.0	46.00	154.00	60.00	33x2.5



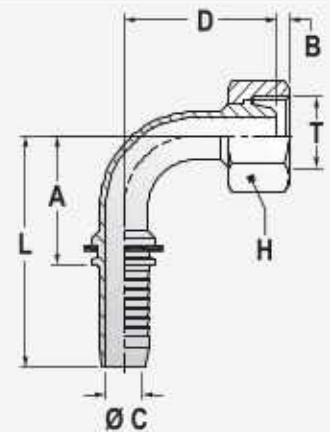
SFDKML

SFDKML METRIC FEMALE MULTISEAL 24° / 60°
DIN 3863

Part No.	Nut Type	Thread T	Hose Bore		A mm	B mm	Ø C mm	L mm	H mm
			Inches	mm					
SFDKML 08 06	b	14 x 1.5	1/4"	6.4	18.42	3.51	4.00	48.42	17.00
SFDKML 10 06	b	16 x 1.5	1/4"	6.4	20.21	4.53	4.00	48.21	19.00
SFDKML 10 08	b	16 x 1.5	5/16"	7.9	20.21	4.53	5.50	48.21	19.00
SFDKML 10 10	a	16 x 1.5	3/8"	9.5	19.28	8.62	7.00	49.00	19.00
SFDKML 12 08	b	18 x 1.5	5/16"	7.9	20.21	4.53	5.50	48.21	22.00
SFDKML 12 10	b	18 x 1.5	3/8"	9.5	20.17	4.53	7.00	49.89	22.00
SFDKML 15 10	b	22 x 1.5	3/8"	9.5	21.46	5.01	7.00	51.18	27.00
SFDKML 15 12	b	22 x 1.5	1/2"	12.7	22.35	5.01	9.50	53.59	27.00
SFDKML 18 16	b	26 x 1.5	5/8"	15.9	22.86	5.51	12.50	56.90	32.00

SFDKML 90° METRIC FEMALE
MULTISEAL 24°/60°DIN 3863

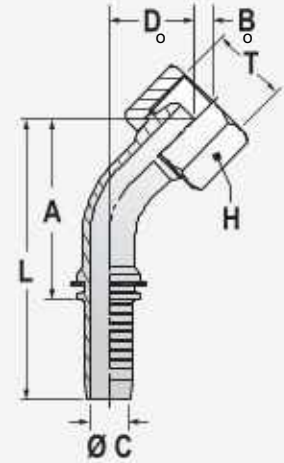
Part No.	Nut Type	Thread T	Hose Bore		A mm	B mm	Ø C mm	D mm	L mm	H mm
			Inches	mm						
SFDKML 90 08 06	b	14 x 1.5	1/4"	6.4	26.00	3.51	4.00	29.00	54.00	17.00
SFDKML 90 10 06	b	16 x 1.5	1/4"	6.4	26.00	4.53	4.00	27.00	54.00	19.00
SFDKML 90 10 08	b	16 x 1.5	5/16"	7.9	34.00	4.53	5.50	33.00	62.00	19.00
SFDKML 90 10 10	a	16 x 1.5	3/8"	9.5	35.28	8.62	7.00	38.00	65.00	19.00
SFDKML 90 12 08	b	18 x 1.5	5/16"	7.9	34.00	4.53	5.50	33.00	62.00	22.00
SFDKML 90 12 10	b	18 x 1.5	3/8"	9.5	34.78	4.53	7.00	37.00	64.50	22.00
SFDKML 90 15 10	b	22 x 1.5	3/8"	9.5	34.78	5.01	7.00	38.00	64.50	27.00
SFDKML 90 15 12	b	22 x 1.5	1/2"	12.7	44.76	5.01	9.50	42.00	76.00	27.00
SFDKML 90 18 16	b	26 x 1.5	5/8"	15.9	48.98	5.51	12.50	52.00	83.00	32.00



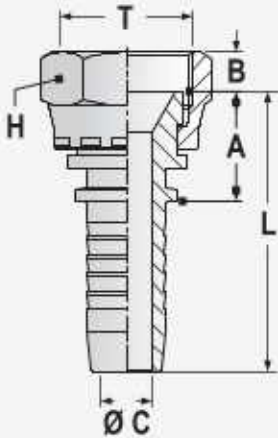
SFDKML90°

SFDKML 45°METRIC FEMALE MULTISEAL 24° / 60° DIN 3863

Part No.	Nut Type	Thread T	Hose Bore Inches	Hose Bore mm	A mm	B mm	Ø C mm	D mm	L mm	H mm
SFDKML 45 08 06	b	14 x 1.5	1/4"	6.4	38.00	3.51	4.00	15.00	66.00	17.00
SFDKML 45 10 06	b	16 x 1.5	1/4"	6.4	38.00	4.53	4.00	17.00	66.00	19.00
SFDKML 45 10 08	b	16 x 1.5	5/16"	7.9	45.00	4.53	5.50	18.00	73.00	19.00
SFDKML 45 10 10	a	16 x 1.5	3/8"	9.5	43.28	8.62	7.00	19.00	73.00	19.00
SFDKML 45 12 08	b	18 x 1.5	5/16"	7.9	45.00	4.53	5.50	16.00	73.00	22.00
SFDKML 45 12 10	b	18 x 1.5	3/8"	9.5	43.28	4.53	7.00	15.00	73.00	22.00
SFDKML 45 15 10	b	22 x 1.5	3/8"	9.5	43.28	5.01	7.00	15.00	73.00	27.00
SFDKML 45 15 12	b	22 x 1.5	1/2"	12.7	46.76	5.01	9.50	17.00	78.00	27.00
SFDKML 45 18 16	b	26 x 1.5	5/8"	15.9	52.96	5.51	12.50	26.00	87.00	32.00



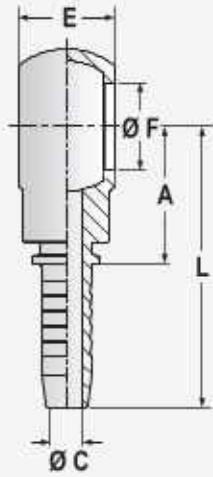
SFDKML45°



SFDKOK

SFDKOK METRIC FEMALE 60° INVERTED CONE (KOMATSU)

Part No.	Nut Type	Thread T	Hose Bore Inches	Hose Bore mm	A mm	B mm	Ø C mm	L mm	H mm
SFDKOK 14 06	a	14 x 1.5	1/4"	6.4	17.33	10.09	4.00	45.33	19.00
SFDKOK 18 10	a	18 x 1.5	3/8"	9.5	18.37	10.01	7.00	48.08	24.00
SFDKOK 22 12	a	22 x 1.5	1/2"	12.7	19.55	13.00	9.50	49.00	17.00
SFDKOK 24 16	a	24 x 1.5	5/8"	15.9	19.55	15.02	12.50	53.60	32.00
SFDKOK 30 19	a	30 x 1.5	3/4"	19.1	22.04	18.01	15.00	61.30	36.00
SFDKOK 33 25	a	33 x 1.5	1"	25.4	23.39	21.99	19.50	70.13	41.00
SFDKOK 36 31	a	36 x 1.5	1 1/4"	31.8	28.54	22.00	26.00	83.10	46.00
SFDKOK 42 38	a	42 x 1.5	1 1/2"	38.1	29.56	23.98	32.00	87.56	55.00



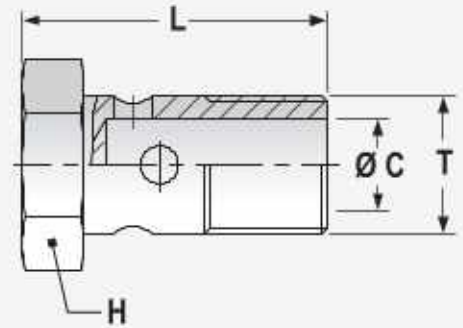
SFRNM

SFRNM METRIC BANJO

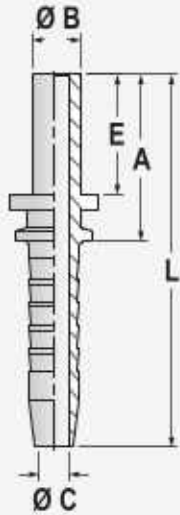
Part No.	Thread T	Hose Bore		A mm	Ø C mm	E mm	Ø F mm	L mm
		Inches	mm					
SFRNM 12 06	12 x 1.5	1/4"	6.4	18.50	4.00	12.60	12.20	58.50
SFRNM 14 06	14 x 1.5	1/4"	6.4	21.32	4.00	14.00	14.20	61.30
SFRNM 14 08	14 x 1.5	5/16"	7.9	27.50	5.50	14.00	14.20	67.30
SFRNM 14 10	14 x 1.5	3/8"	9.5	27.32	7.00	14.00	14.20	67.30
SFRNM 16 08	16 x 1.5	5/16"	7.9	24.46	5.50	18.00	16.20	66.50
SFRNM 16 10	16 x 1.5	3/8"	9.5	24.28	7.00	18.00	16.20	68.00
SFRNM 30 19	30 x 1.5	3/4"	19.1	43.40	15.00	30.00	30.00	107.60

SFF15 M METRIC BOLT FOR BANJO

Part No.	Thread T	Ø C mm	L mm	H mm
SFF15 M 10	10 x 1.0	6.00	26.20	14.00
SFF15 M 12	12 x 1.5	6.00	30.00	17.00
SFF15 M 14	14 x 1.5	8.00	33.00	19.00
SFF15 M 16	16 x 1.5	10.00	39.00	22.00
SFF15 M 18	18 x 1.5	11.00	44.50	24.00
SFF15 M 22	22 x 1.5	13.00	46.70	27.00
SFF15 M 26	26 x 1.5	16.00	56.15	32.00
SFF15 M 30	30 x 1.5	19.00	58.15	38.00



SFF15



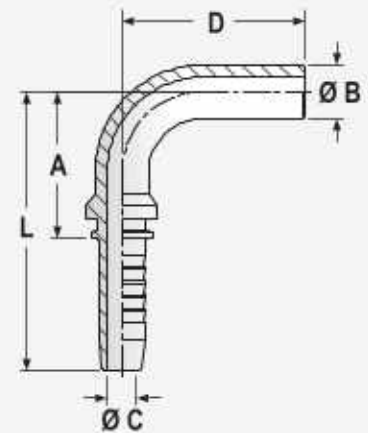
SFBEL

SFBEL STANDPIPES FOR DIN 2353 FITTING LIGHT

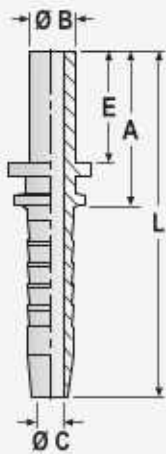
Part No.	Size		Hose Bore		A mm	Ø B mm	Ø C mm	E mm	L mm
	mm	Inches	mm						
SF BEL 06 06	6	1/4"	6.4		29.37	6.00	4.00	22.00	57.00
SF BEL 08 06	8	1/4"	6.4		31.37	8.00	4.00	24.00	59.00
SF BEL 10 08	10	5/16"	7.9		31.55	10.00	5.50	24.00	59.60
SF BEL 10 10	10	3/8"	9.5		31.37	10.00	7.00	24.00	61.10
SF BEL 12 10	12	3/8"	9.5		32.37	12.00	7.00	25.00	62.10
SF BEL 15 10	15	3/8"	9.5		37.37	15.00	7.00	30.00	67.10
SF BEL 15 12	15	1/2"	12.7		38.55	15.00	9.50	30.00	68.00
SF BEL 18 12	18	1/2"	12.7		40.55	18.00	9.50	32.00	70.00
SF BEL 18 16	18	5/8"	15.9		40.55	18.00	12.50	32.00	74.60
SF BEL 22 16	22	5/8"	15.9		42.55	22.00	12.50	34.00	76.60
SF BEL 22 19	22	3/4"	19.1		44.05	22.00	15.00	34.00	83.30
SF BEL 28 25	28	1"	25.4		45.40	28.00	19.50	36.00	92.10
SF BEL 35 31	35	1 1/4"	31.8		51.55	35.00	26.00	40.00	106.10
SF BEL 42 38	42	1 1/2"	38.1		61.59	42.00	32.00	50.04	117.80

SFBEL 90° STANDPIPES FOR DIN 2353 FITTING LIGHT

Part No.	Size		Hose Bore		A mm	Ø B mm	Ø C mm	D mm	L mm
	mm	Inches	mm						
SF BEL 90 06 06	6	1/4"	6.4		27.00	6.00	4.00	32.00	55.00
SF BEL 90 08 06	8	1/4"	6.4		27.00	8.00	4.00	36.00	55.00
SF BEL 90 10 08	10	5/16"	7.9		27.00	10.00	5.50	42.00	55.00
SF BEL 90 10 10	10	3/8"	9.5		25.28	10.00	7.00	42.00	55.00
SF BEL 90 12 10	12	3/8"	9.5		35.78	12.00	7.00	38.00	65.50
SF BEL 90 15 12	15	1/2"	12.7		37.50	15.00	9.50	40.00	67.00
SF BEL 90 18 12	18	1/2"	12.7		48.00	18.00	9.50	53.00	77.50
SF BEL 90 18 16	18	5/8"	15.9		49.96	18.00	12.50	58.00	84.00
SF BEL 90 22 16	22	5/8"	15.9		49.96	22.00	12.50	60.00	84.00
SF BEL 90 22 19	22	3/4"	19.1		56.26	22.00	15.00	72.00	95.50
SF BEL 90 28 25	28	1"	25.4		78.26	28.00	19.50	90.00	125.00



SFBEL 90°



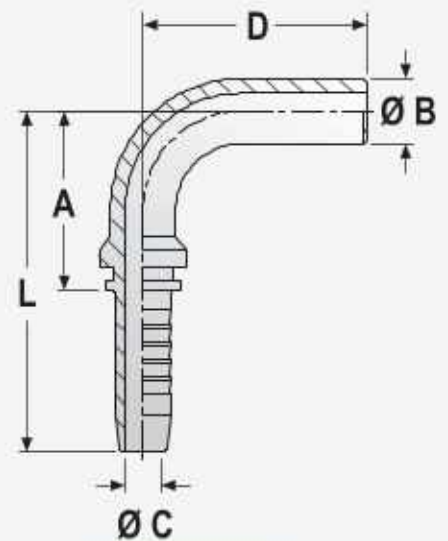
SFBES

SFBES STANDPIPES FOR DIN 2353 FITTING HEAVY

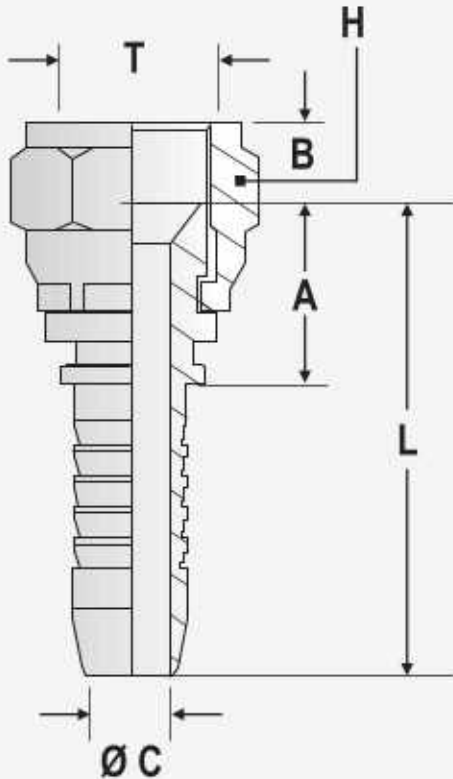
Part No.	Size		Hose Bore		A mm	Ø B mm	Ø C mm	E mm	L mm
	mm	Inches	mm	Inches					
SFBES 08 06	8	1/4"	6.4	1/4"	31.37	8.00	4.00	24.00	59.00
SFBES 10 06	10	1/4"	6.4	1/4"	31.37	10.00	4.00	24.00	59.00
SFBES 12 06	12	1/4"	6.4	1/4"	32.37	12.00	4.00	25.00	60.00
SFBES 12 08	12	5/16"	7.9	5/16"	32.55	12.00	5.50	25.00	60.60
SFBES 14 10	14	3/8"	9.5	3/8"	34.37	14.00	7.00	27.00	64.10
SFBES 14 12	14	1/2"	12.7	1/2"	35.55	14.00	9.50	27.00	65.10
SFBES 16 12	16	1/2"	12.7	1/2"	38.55	16.00	9.50	30.00	68.10
SFBES 20 16	20	5/8"	15.9	5/8"	40.55	20.00	12.50	32.00	75.00
SFBES 20 19	20	3/4"	19.1	3/4"	42.05	20.00	15.00	32.00	81.30
SFBES 25 19	25	3/4"	19.1	3/4"	44.05	25.00	15.00	34.00	83.30
SFBES 25 25	25	1"	25.4	1"	43.40	25.00	19.50	34.00	90.00
SFBES 30 25	30	1"	25.4	1"	45.40	30.00	19.50	36.00	92.10
SFBES 38 31	38	1 1/4"	31.8	1 1/4"	51.55	38.00	26.00	40.00	106.10

SFBES 90° STANDPIPES FOR DIN 2353 FITTINGS HEAVY

Part No.	Size		Hose Bore		A mm	Ø B mm	Ø C mm	D mm	L mm
	mm	Inches	mm	Inches					
SFBES 90 08 06	8	1/4"	6.4	1/4"	27.00	8.00	4.00	36.00	55.00
SFBES 90 10 06	10	1/4"	6.4	1/4"	27.00	10.00	4.00	39.00	55.00
SFBES 90 12 06	12	1/4"	6.4	1/4"	27.00	12.00	4.00	47.00	55.00
SFBES 90 12 08	12	5/16"	7.9	5/16"	27.00	12.00	5.50	47.00	55.00
SFBES 90 14 10	14	3/8"	9.5	3/8"	26.28	14.00	7.00	46.50	55.00
SFBES 90 14 12	14	1/2"	12.7	1/2"	48.00	14.00	9.50	53.00	77.50
SFBES 90 16 12	16	1/2"	12.7	1/2"	48.00	16.00	9.50	53.00	77.50
SFBES 90 20 16	20	5/8"	15.9	5/8"	49.96	20.00	12.50	58.00	84.00
SFBES 90 20 19	20	3/4"	19.1	3/4"	56.26	20.00	15.00	72.00	95.50
SFBES 90 25 19	25	3/4"	19.1	3/4"	56.26	25.00	15.00	72.00	95.50
SFBES 90 25 25	25	1"	25.4	1"	57.26	25.00	19.50	72.00	104.00
SFBES 90 30 25	30	1"	25.4	1"	78.26	30.00	19.50	90.00	125.00



SFBES 90°



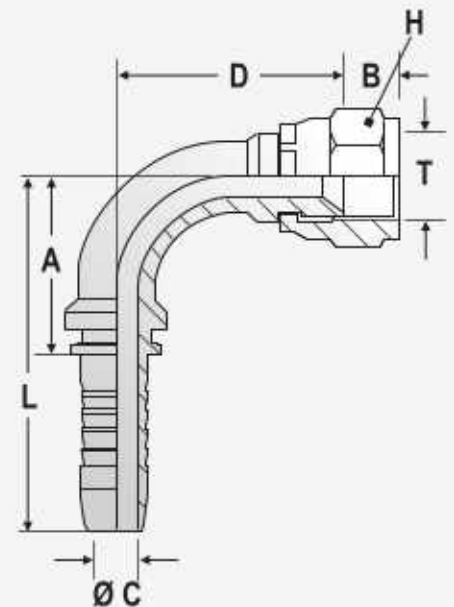
SFDKJ

SFDKJ JIC FEMALE 74° CONE

Part No.	Nut Type	Thread T	Hose Bore		A mm	B mm	Ø C mm	L mm	H mm
			Inches	mm					
SFDKJ 07 05	a	7/16"-20UNF	3/16"	4.8	15.67	9.02	3.00	37.67	14.00
SFDKJ 07 06	a	7/16"-20UNF	1/4"	6.4	16.39	9.02	4.00	43.70	14.00
SFDKJ 08 06	a	1/2"-20UNF	1/4"	6.4	17.91	8.48	4.00	45.20	17.00
SFDKJ 08 08	a	1/2"-20UNF	5/16"	7.9	18.09	8.48	5.50	46.00	17.00
SFDKJ 09 06	a	9/16"-18UNF	1/4"	6.4	17.78	9.14	4.00	45.10	19.00
SFDKJ 09 08	a	9/16"-18UNF	5/16"	7.9	17.96	9.14	5.50	45.90	19.00
SFDKJ 09 10	a	9/16"-18UNF	3/8"	9.5	17.78	9.14	7.00	47.50	19.00
SFDKJ 12 10	a	3/4"-16UNF	3/8"	9.5	19.05	10.79	7.00	48.77	22.00
SFDKJ 12 12	a	3/4"-16UNF	1/2"	12.7	20.23	10.79	9.50	49.70	22.00
SFDKJ 14 10	a	7/8"-14UNF	3/8"	9.7	20.07	12.78	7.00	49.80	27.00
SFDKJ 14 12	a	7/8"-14UNF	1/2"	12.7	21.25	12.78	9.50	50.70	27.00
SFDKJ 14 16	a	7/8"-14UNF	5/8"	15.9	21.25	12.78	12.50	55.30	27.00
SFDKJ 17 12	a	1 1/16"-12UN	1/2"	12.7	22.14	14.43	9.50	53.00	32.00
SFDKJ 17 16	a	1 1/16"-12UN	5/8"	15.9	22.14	14.43	12.50	56.00	32.00
SFDKJ 17 19	a	1 1/16"-12UN	3/4"	19.1	23.64	14.43	15.00	62.60	32.00
SFDKJ 17 25	a	1 1/16"-12UN	1"	25.4	25.99	14.43	19.50	72.73	32.00
SFDKJ 19 19	a	1 3/16"-12UN	3/4"	19.1	24.02	15.16	15.00	63.00	36.00
SFDKJ 21 19	a	1 5/16"-12UN	3/4"	19.1	25.16	14.78	15.00	64.20	38.00
SFDKJ 21 25	a	1 5/16"-12UN	1"	25.4	24.51	14.78	19.50	71.25	38.00
SFDKJ 26 25	a	1 5/8"-12UN	1"	25.4	24.00	15.88	19.50	70.74	50.00
SFDKJ 26 31	a	1 5/8"-12UN	1 1/4"	31.8	26.15	15.88	26.00	80.70	50.00
SFDKJ 30 31	a	1 7/8"-12UN	1 1/4"	31.8	28.82	18.80	26.00	86.80	55.00
SFDKJ 30 38	a	1 7/8"-12UN	1 1/2"	38.1	28.82	18.80	32.00	86.80	55.00
SFDKJ 40 51	a	2 1/2"-12UN	2"	50.8	32.15	24.00	42.00	104.90	70.00

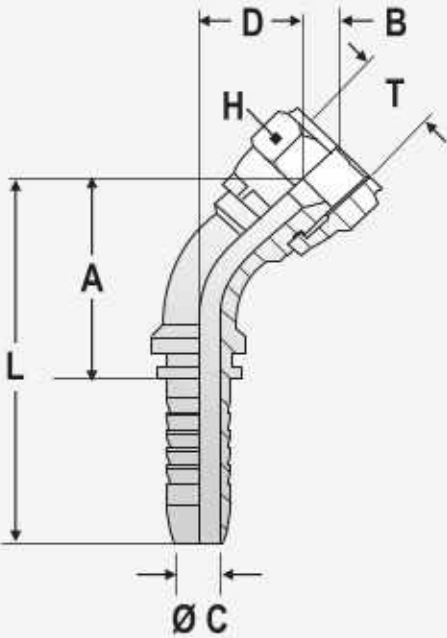
SFDKJ 90° JIC FEMALE 74° CONE

Part No.	Nut Type	Thread T	Hose Bore		A mm	B mm	Ø C mm	D mm	L mm	H mm
			Inches	mm						
SFDKJ 90 07 06	a	7/16"-20UNF	1/4"	6.4	27.00	9.02	4.00	27.00	55.00	14.00
SFDKJ 90 08 06	a	1/2"-20UNF	1/4"	6.4	27.70	8.48	4.00	29.00	55.00	17.00
SFDKJ 90 09 06	a	9/16"-18UNF	1/4"	6.4	27.00	9.14	4.00	29.00	55.00	19.00
SFDKJ 90 09 08	a	9/16"-18UNF	5/16"	7.9	33.00	9.14	5.50	34.50	61.00	19.00
SFDKJ 90 09 10	a	9/16"-18UNF	3/8"	9.5	35.28	9.14	7.00	36.50	65.00	19.00
SFDKJ 90 12 10	a	3/4"-16UNF	3/8"	9.5	33.78	10.79	7.00	38.00	63.50	22.00
SFDKJ 90 12 12	a	3/4"-16UNF	1/2"	12.7	48.00	10.79	9.50	43.00	77.50	22.00
SFDKJ 90 14 10	a	7/8"-14UNF	3/8"	9.5	33.78	12.78	7.00	45.00	63.50	27.00
SFDKJ 90 14 12	a	7/8"-14UNF	1/2"	12.7	47.00	12.78	9.50	45.00	76.50	27.00
SFDKJ 90 14 16	a	7/8"-14UNF	5/8"	15.9	42.46	12.78	12.50	45.00	76.50	27.00
SFDKJ 90 17 12	a	1 1/16"-12UN	1/2"	12.7	47.00	14.43	9.50	45.00	76.50	32.00
SFDKJ 90 17 16	a	1 1/16"-12UN	5/8"	15.9	55.96	14.43	12.50	56.00	90.00	32.00
SFDKJ 90 17 19	a	1 1/16"-12UN	3/4"	19.1	58.28	14.43	15.00	57.00	97.50	32.00
SFDKJ 90 19 19	a	1 3/16"-12UN	3/4"	19.1	58.26	15.16	15.00	57.00	97.50	36.00
SFDKJ 90 21 19	a	1 5/16"-12UN	3/4"	19.1	58.26	14.78	15.00	58.00	97.50	38.00
SFDKJ 90 21 25	a	1 5/16"-12UN	1"	25.4	79.46	14.78	19.50	67.50	126.20	38.00
SFDKJ 90 26 25	a	1 5/8"-12UN	1"	25.4	79.46	15.88	19.50	67.50	126.20	50.00
SFDKJ 90 26 31	a	1 5/8"-12UN	1 1/4"	31.8	95.47	15.88	26.00	64.00	150.00	50.00
SFDKJ 90 30 31	a	1 7/8"-12UN	1 1/4"	31.8	95.47	18.80	26.00	66.00	150.00	55.00
SFDKJ 90 30 38	a	1 7/8"-12UN	1 1/2"	38.1	117.00	18.80	32.00	98.00	175.00	55.00
SFDKJ 90 40 51	a	2 1/2"-12UN	2"	50.8	142.25	24.00	42.00	134.00	215.00	70.00



SFDKJ 90°

SFDKJ 45° JIC FEMALE 74° CONE

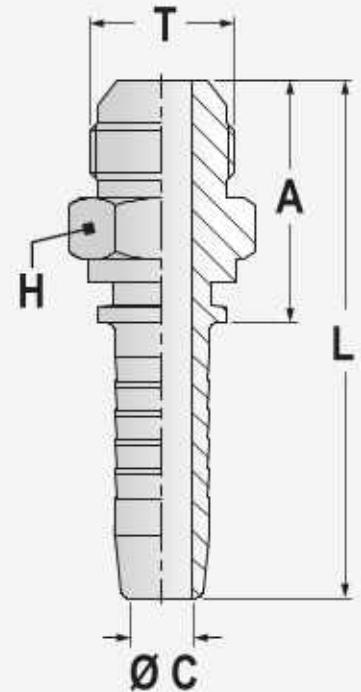


SFDKJ 45°

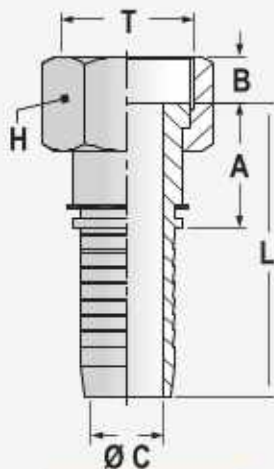
Part No.	Nut Type	Thread T	Hose Bore Inches	mm	A mm	B mm	Ø C mm	D mm	L mm	H mm
SFDKJ 45 07 06	a	7/16"-20UNF	1/4"	6.4	34.00	9.02	4.00	14.00	62.00	14.00
SFDKJ 45 08 06	a	1/2"-20UNF	1/4"	6.4	35.00	8.48	4.00	14.00	63.00	17.00
SFDKJ 45 09 06	a	9/16"-18UNF	1/4"	6.4	35.00	8.14	4.00	14.00	63.00	19.00
SFDKJ 45 09 08	a	9/16"-18UNF	5/16"	7.9	45.00	9.14	5.50	13.00	73.00	19.00
SFDKJ 45 09 10	a	9/16"-18UNF	3/8"	9.5	44.28	9.14	7.00	24.00	74.00	19.00
SFDKJ 45 12 10	a	3/4"-16UNF	3/8"	9.5	45.28	10.79	7.00	24.00	75.00	22.00
SFDKJ 45 12 12	a	3/4"-16UNF	1/2"	12.7	48.50	10.79	9.50	21.50	78.00	22.00
SFDKJ 45 14 10	a	7/8"-14UNF	3/8"	9.5	45.28	12.78	7.00	24.00	75.00	27.00
SFDKJ 45 14 12	a	7/8"-14UNF	1/2"	12.7	48.50	12.78	9.50	23.00	78.00	27.00
SFDKJ 45 14 16	a	7/8"-14UNF	5/8"	15.9	63.96	12.78	12.50	30.00	98.00	27.00
SFDKJ 45 17 12	a	1 1/16"-12UN	1/2"	12.7	48.50	14.43	9.50	38.00	78.00	32.00
SFDKJ 45 17 16	a	1 1/16"-12UN	5/8"	15.9	65.96	14.43	12.50	32.00	100.00	32.00
SFDKJ 45 17 19	a	1 1/16"-12UN	3/4"	19.1	67.76	14.43	15.00	28.00	107.00	32.00
SFDKJ 45 19 19	a	1 3/16"-12UN	3/4"	19.1	67.76	15.16	15.00	28.00	107.00	36.00
SFDKJ 45 21 19	a	1 5/16"-12UN	3/4"	19.1	67.76	14.78	15.00	29.00	107.00	38.00
SFDKJ 45 21 25	a	1 5/16"-12UN	1"	25.4	80.26	14.78	19.50	35.00	127.00	38.00
SFDKJ 45 26 25	a	1 5/8"-12UN	1"	25.4	80.26	15.88	19.50	35.50	127.00	50.00
SFDKJ 45 26 31	a	1 5/8"-12UN	1 1/4"	31.8	89.47	15.88	26.00	37.00	144.00	50.00
SFDKJ 45 30 31	a	1 7/8"-12UN	1 1/4"	31.8	90.47	18.80	26.00	37.00	145.00	55.00
SFDKJ 45 30 38	a	1 7/8"-12UN	1 1/2"	38.1	132.00	18.80	32.00	55.00	180.00	55.00
SFDKJ 45 40 51	a	2 1/2"-12UN	2"	50.8	158.25	24.00	42.00	52.00	229.00	70.00

SFAGJ JIC MALE 74° CONE

Part No.	Nut Type	Thread T	Hose Bore Inches	mm	A mm	Ø C mm	L mm	H mm
SFAGJ 07 06	-	7/16"-20UNF	1/4"	6.4	29.21	4.00	57.21	14.00
SFAGJ 08 06	-	1/2"-20UNF	1/4"	6.4	29.21	4.00	57.21	14.00
SFAGJ 08 08	-	1/2"-20UNF	5/16"	7.9	29.39	5.50	57.39	14.00
SFAGJ 09 06	-	9/16"-18UNF	1/4"	6.4	29.47	4.00	57.47	17.00
SFAGJ 09 08	-	9/16"-18UNF	5/16"	7.9	29.64	5.50	57.64	17.00
SFAGJ 09 10	-	9/16"-18UNF	3/8"	9.5	29.46	7.00	59.18	17.00
SFAGJ 12 10	-	3/4"-16UNF	3/8"	9.5	33.53	7.00	63.25	22.00
SFAGJ 12 12	-	3/4"-16UNF	1/2"	12.7	34.71	9.50	64.21	22.00
SFAGJ 14 10	-	7/8"-14UNF	3/8"	9.5	36.27	7.00	65.99	27.00
SFAGJ 14 12	-	7/8"-14UNF	1/2"	12.7	37.45	9.50	66.95	27.00
SFAGJ 14 16	-	7/8"-14UNF	5/8"	15.9	37.45	12.50	71.47	27.00
SFAGJ 17 12	-	1 1/16"-12UN	1/2"	12.7	40.15	9.50	69.65	27.00
SFAGJ 17 16	-	1 1/16"-12UN	5/8"	15.9	40.15	12.50	73.34	27.00
SFAGJ 17 19	-	1 1/16"-12UN	3/4"	19.1	41.85	15.00	80.89	32.00
SFAGJ 17 25	-	1 1/16"-12UN	1"	25.4	41.00	19.50	87.74	36.00
SFAGJ 19 19	-	1 3/16"-12UN	3/4"	19.1	42.31	15.00	81.60	32.00
SFAGJ 21 19	-	1 5/16"-12UN	3/4"	19.1	47.91	15.00	81.60	38.00
SFAGJ 21 25	-	1 5/16"-12UN	1"	25.4	47.26	19.50	94.00	38.00
SFAGJ 26 25	-	1 5/8"-12UN	1"	25.4	48.97	19.50	94.00	48.00
SFAGJ 26 31	-	1 5/8"-12UN	1 1/4"	31.8	51.12	26.00	105.60	48.00
SFAGJ 30 31	-	1 7/8"-12UN	1 1/4"	31.8	56.84	26.00	111.37	52.00
SFAGJ 30 38	-	1 7/8"-12UN	1 1/2"	38.1	56.84	32.00	114.80	52.00
SFAGJ 40 51	-	2 1/2"-12UN	2"	50.8	69.46	42.00	142.20	70.00



SFAGJ



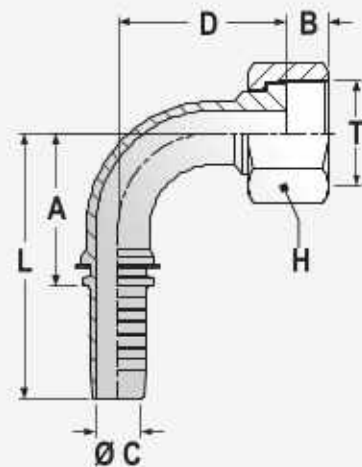
SFORFS

SF ORFS FACE SEAL FEMALE FITTINGS ISO 12151-1 (ISO 8434-3)

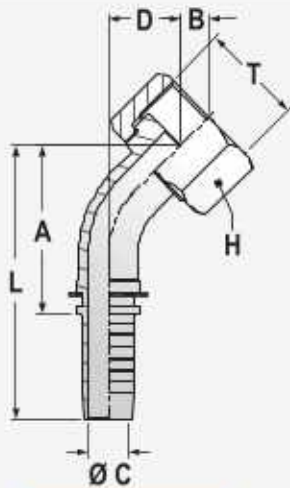
Part No.	Nut Type	Thread T	Hose Bore		A mm	B mm	Ø C mm	L mm	H mm
			Inches	mm					
SFORFS 09 06	b	9/16"-18UNF	1/4"	6.4	21.60	8.24	4.00	49.60	17.00
SFORFS 11 06	b	1 1/16"-16UNF	1/4"	6.4	23.60	9.47	4.00	51.60	22.00
SFORFS 11 08	b	1 1/16"-16UNF	5/16"	7.9	23.60	9.47	5.50	51.50	22.00
SFORFS 11 10	b	1 1/16"-16UNF	3/8"	9.5	23.60	9.47	7.00	53.30	22.00
SFORFS 13 10	b	1 3/16"-16UN	3/8"	9.5	27.00	10.81	7.00	56.70	24.00
SFORFS 13 12	b	1 3/16"-16UN	1/2"	12.7	27.90	10.81	9.50	57.40	24.00
SFORFS 16 12	b	1"-14UNS	1/2"	12.7	31.70	12.30	9.50	61.20	30.00
SFORFS 16 16	b	1"-14UNS	5/8"	15.9	31.70	12.30	12.50	65.70	30.00
SFORFS 19 12	b	1 3/16"-12UN	1/2"	12.7	34.15	14.51	9.50	63.60	36.00
SFORFS 19 19	b	1 3/16"-12UN	3/4"	19.1	35.65	14.51	15.00	74.90	36.00
SFORFS 23 19	b	1 7/16"-12UN	3/4"	19.1	36.70	14.67	15.00	75.90	41.00
SFORFS 23 25	b	1 7/16"-12UN	1"	25.4	36.70	14.67	19.00	83.40	41.00
SFORFS 27 31	b	1 11/16"-12UN	1 1/4"	31.8	38.25	13.52	26.00	92.80	50.00
SFORFS 32 38	b	2"-12UN	1 1/2"	38.1	38.25	13.52	32.00	96.20	60.00

SF ORFS 90° FACE SEAL FEMALE 90° FITTINGS ISO 12151-1 (ISO 8434-3)

Part No.	Nut Type	Thread T	Hose Bore		A mm	B mm	Ø C mm	D mm	L mm	H mm
			Inches	mm						
SFORFS 90 09 06	b	9/16"-18UNF	1/4"	6.4	26.00	8.24	4.00	26.50	54.00	17.00
SFORFS 90 11 06	b	1 1/16"-16UNF	1/4"	6.4	26.00	9.47	4.00	26.50	54.00	22.00
SFORFS 90 11 08	b	1 1/16"-16UNF	5/16"	7.9	28.10	9.47	5.50	30.00	56.00	22.00
SFORFS 90 11 10	b	1 1/16"-16UNF	3/8"	9.5	36.28	9.47	7.00	33.50	66.00	22.00
SFORFS 90 13 10	b	1 3/16"-16UN	3/8"	9.5	36.28	10.81	7.00	33.50	66.00	24.00
SFORFS 90 13 12	b	1 3/16"-16UN	1/2"	12.7	47.00	10.81	9.50	38.50	76.50	24.00
SFORFS 90 16 12	b	1"-14UNS	1/2"	12.7	43.50	12.30	9.50	40.00	73.00	30.00
SFORFS 90 16 16	b	1"-14UNS	5/8"	15.9	51.96	12.30	12.50	49.00	86.00	30.00
SFORFS 90 19 12	b	1 3/16"-12UN	1/2"	12.7	43.50	14.51	9.50	42.00	73.00	36.00
SFORFS 90 19 19	b	1 3/16"-12UN	3/4"	19.1	59.76	14.51	15.00	52.00	99.00	36.00
SFORFS 90 23 19	b	1 7/16"-12UN	3/4"	19.1	59.76	14.67	15.00	58.00	99.00	41.00
SFORFS 90 23 25	b	1 7/16"-12UN	1"	25.4	78.26	14.67	19.00	65.00	125.00	41.00
SFORFS 90 27 31	b	1 11/16"-12UN	1 1/4"	31.8	95.47	13.52	26.00	76.00	150.00	50.00
SFORFS 90 32 38	b	2"-12UN	1 1/2"	38.1	117.00	13.52	32.00	89.00	175.00	60.00



SFORFS 90°



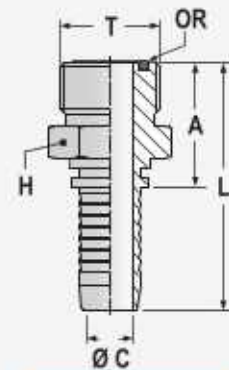
SFORFS 45°

SF ORFS 45° FACE SEAL FEMALE 45° FITTINGS
ISO 12151-1 (ISO 8434-3)

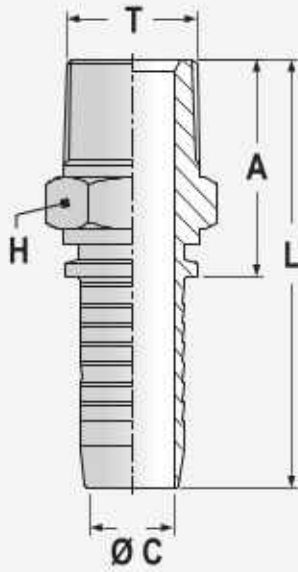
Part No.	Nut Type	Thread T	Hose Bore	A	B	Ø C	L	D	H
			Inches mm	mm	mm	mm	mm	mm	mm
SFORFS 45 09 06	b	9/16"-18UNF	1/4" 6.4	33.00	8.24	4.00	61.00	12.00	17.00
SFORFS 45 11 06	b	1 1/16"-16UNF	1/4" 6.4	33.00	9.47	4.00	61.00	12.00	22.00
SFORFS 45 11 10	b	1 1/16"-16UNF	3/8" 9.5	38.78	9.47	7.00	68.50	15.50	22.00
SFORFS 45 13 10	b	1 3/16"-16UN	3/8" 9.5	38.78	10.81	7.00	68.50	15.50	24.00
SFORFS 45 13 12	b	1 3/16"-16UN	1/2" 12.7	47.50	10.81	9.50	77.00	19.50	24.00
SFORFS 45 16 12	b	1"-14UNS	1/2" 12.7	49.50	12.30	9.50	79.00	20.00	30.00
SFORFS 45 16 16	b	1"-14UNS	5/8" 15.9	49.46	12.30	12.50	83.50	20.00	30.00
SFORFS 45 19 19	b	1 3/16"-12UN	3/4" 19.1	65.76	14.51	15.00	105.00	24.00	36.00
SFORFS 45 23 25	b	1 7/16"-12UN	1" 25.4	83.26	14.67	19.00	130.00	30.00	41.00
SFORFS 45 27 31	b	1 11/16"-12UN	1 1/4" 31.8	95.47	13.52	26.00	150.00	33.00	50.00
SFORFS 45 32 38	b	2"-12UN	1 1/2" 38.1	127.00	13.52	32.00	150.00	45.00	60.00

SF AORFS FACE SEAL MALE FITTINGS
ISO 12151-1 (ISO 8434-3)

Part No.	Nut Type	Thread T	Hose Bore	A	Ø C	L	H	OR
			Inches mm	mm	mm	mm	mm	mm
SFAORFS 09 06	-	9/16"-18UNF	1/4" 6.4	24.05	4.00	52.05	17.00	7.65X1.78
SFAORFS 13 12	-	13/16"-16UN	1/2" 12.7	29.91	9.50	59.41	22.00	12.42X1.78
SFAORFS 16 16	-	1"-14UNS	5/8" 15.9	34.12	12.50	68.16	27.00	15.60X1.78
SFAORFS 19 19	-	1 3/16"-12UN	3/4" 19.1	38.78	15.00	78.02	32.00	18.77X1.78
SFAORFS 23 25	-	1 7/16"-12UN	1" 25.4	42.98	19.50	89.72	41.00	23.52X1.78
SFAORFS 27 31	-	1 11/16"-12UN	1 1/4" 31.8	47.13	26.00	101.66	46.00	29.87X1.78
SFAORFS 32 38	-	2"-12UN	1 1/2" 38.1	51.13	32.00	108.86	55.00	37.82X1.78



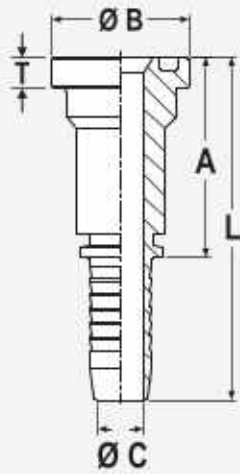
SFAORFS



SFAGN

SFAGN NPT MALE)

Part No.	Nut Type	Thread T	Hose Bore		A mm	Ø C mm	L mm	H mm
			Inches	mm				
SFAGN 02 06	-	1/8"-27	1/4"	6.4	22.35	4.00	50.36	14.00
SFAGN 04 06	-	1/4"-18	1/4"	6.4	26.92	4.00	54.30	17.00
SFAGN 04 10	-	1/4"-18	3/8"	9.5	26.92	7.00	56.64	17.00
SFAGN 06 06	-	3/8"-18	1/4"	6.4	26.93	4.00	54.93	19.00
SFAGN 06 08	-	3/8"-18	5/16"	7.9	27.10	5.50	55.10	19.00
SFAGN 06 10	-	3/8"-18	3/8"	9.5	26.92	7.00	56.64	19.00
SFAGN 06 12	-	3/8"-18	1/2"	12.7	28.61	9.50	58.10	22.00
SFAGN 08 10	-	1/2"-14	3/8"	9.5	32.26	7.00	61.98	22.00
SFAGN 08 12	-	1/2"-14	1/2"	12.7	33.44	9.50	62.90	22.00
SFAGN 08 16	-	1/2"-14	5/8"	15.9	34.71	12.50	68.80	27.00
SFAGN 12 12	-	3/4"-14	1/2"	12.7	34.71	9.50	64.21	27.00
SFAGN 12 16	-	3/4"-14	5/8"	15.9	34.71	12.50	68.75	27.00
SFAGN 12 19	-	3/4"-14	3/4"	19.1	36.21	15.00	75.45	27.00
SFAGN 16 19	-	1-11.5	3/4"	19.1	47.39	15.00	86.60	36.00
SFAGN 16 25	-	1-11.5	1"	25.4	46.74	19.50	93.47	36.00
SFAGN 20 25	-	1 1/4-11.5	1"	25.4	49.53	19.50	96.30	42.00
SFAGN 20 31	-	1 1/4-11.5	1 1/4"	31.8	51.68	26.00	106.22	42.00
SFAGN 24 38	-	1 1/2-11.5	1 1/2"	38.1	55.24	32.00	113.24	50.00
SFAGN 32 51	-	2-11.5	2"	50.8	57.26	42.00	130.00	65.00



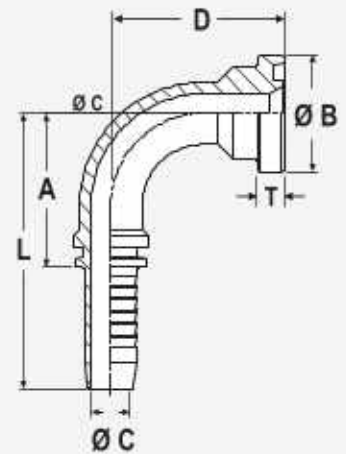
SFFL3

SFFL3 SAE J518 FLANGES 3000 PSI
CODE 61))

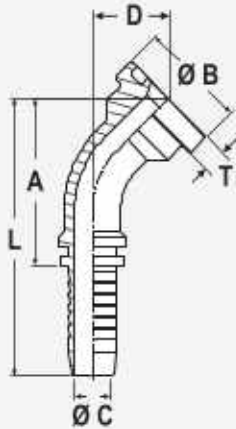
Part No.	Flange size	Flange Head Thickness T	Hose Bore Inches	Hose Bore mm	A mm	Ø B mm	Ø C mm	L mm
SFFL3 08 12	1/2"	6.73	1/2"	12.7	37.25	30.15	9.50	66.70
SFFL3 12 12	3/4"	6.73	1/2"	12.7	42.33	38.10	9.50	71.83
SFFL3 12 16	3/4"	6.73	5/8"	15.9	42.33	38.10	12.50	76.37
SFFL3 12 19	3/4"	6.73	3/4"	19.1	43.83	38.10	15.00	83.00
SFFL3 16 19	1"	8.00	3/4"	19.1	49.67	44.45	15.00	88.90
SFFL3 16 25	1"	8.00	1"	25.4	49.02	44.45	19.50	95.80
SFFL3 20 25	1 1/4"	8.00	1"	25.4	52.83	50.80	19.50	99.57
SFFL3 20 31	1 1/4"	8.00	1 1/4"	31.8	54.98	50.80	26.00	109.50
SFFL3 24 31	1 1/2"	7.87	1 1/4"	31.8	59.30	60.32	26.00	113.80
SFFL3 24 38	1 1/2"	7.87	1 1/2"	38.1	59.30	60.32	32.00	117.30
SFFL3 32 38	2"	9.52	1 1/2"	38.1	62.73	71.42	32.00	120.70
SFFL3 32 51	2"	9.52	2"	50.8	62.73	71.42	42.00	135.50

SFFL3 90° SAE J518 FLANGES 3000
PSI (CODE 61)

Part No.	Flange size	Flange Head Thickness T	Hose Bore Inches	Hose Bore mm	A mm	Ø B mm	Ø C mm	L mm	D mm
SFFL3 90 08 12	1/2"	6.73	1/2"	12.7	47.00	30.18	9.50	76.50	46.50
SFFL3 90 12 12	3/4"	6.73	1/2"	12.7	47.00	38.10	9.50	76.50	46.50
SFFL3 90 12 16	3/4"	6.73	5/8"	15.9	53.96	38.10	12.50	88.00	54.00
SFFL3 90 12 19	3/4"	6.73	3/4"	19.1	57.26	38.10	15.00	96.50	57.00
SFFL3 90 16 19	1"	8.00	3/4"	19.1	57.26	44.45	15.00	96.50	57.00
SFFL3 90 16 25	1"	8.00	1"	25.4	78.26	44.45	19.50	125.00	69.90
SFFL3 90 20 25	1 1/4"	8.00	1"	25.4	78.26	50.80	19.50	125.00	70.00
SFFL3 90 20 31	1 1/4"	8.00	1 1/4"	31.8	101.47	50.80	26.00	156.00	97.00
SFFL3 90 24 31	1 1/2"	8.00	1 1/4"	31.8	101.47	60.32	26.00	156.00	97.50
SFFL3 90 24 38	1 1/2"	8.00	1 1/2"	38.1	117.00	60.32	32.00	175.00	90.00
SFFL3 90 32 38	2"	9.52	1 1/2"	38.1	117.00	71.42	32.00	175.00	90.00
SFFL3 90 32 51	2"	9.52	2"	50.8	167.25	71.42	42.00	240.00	120.00



SFFL3 90°



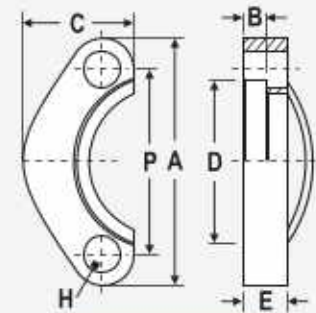
SFFL3 45°

SFFL3 45 45 SAE J518 FLANGES 3000 PSI
(CODE 61)

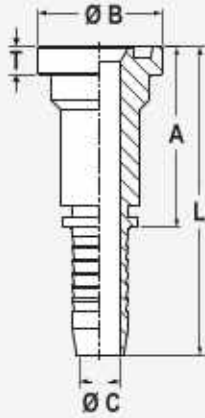
Part No.	Flange size	Flange Head Thickness T	Hose Bore		A mm	ØB mm	ØC mm	D mm	L mm
			Inches	mm					
SFFL3 45 08 12	1/2"	6.73	1/2"	12.7	52.50	30.18	9.50	21.00	82.00
SFFL3 45 12 12	3/4"	6.73	1/2"	12.7	56.50	38.10	9.50	28.00	86.00
SFFL3 45 12 16	3/4"	6.73	5/8"	15.9	61.96	38.10	12.50	28.00	96.00
SFFL3 45 12 19	3/4"	6.73	3/4"	19.1	66.76	38.10	14.20	28.00	106.00
SFFL3 45 16 19	1"	8.00	3/4"	19.1	66.76	44.45	14.20	28.00	106.00
SFFL3 45 16 25	1"	8.00	1"	25.4	88.26	44.45	19.50	30.00	135.00
SFFL3 45 20 25	1 1/4"	8.00	1"	25.4	88.26	50.80	19.50	33.00	135.00
SFFL3 45 20 31	1 1/4"	8.00	1 1/4"	31.8	101.47	50.80	26.00	36.00	156.00
SFFL3 45 24 31	1 1/2"	8.00	1 1/4"	31.8	101.47	60.32	26.00	34.00	156.00
SFFL3 45 24 38	1 1/2"	8.00	1 1/2"	38.1	132.00	60.32	32.00	44.00	190.00
SFFL3 45 32 38	2"	9.52	1 1/2"	38.1	132.00	71.42	32.00	44.00	190.00
SFFL3 45 32 51	2"	9.52	2"	50.8	152.25	71.42	42.00	48.00	225.00

SFFSC3 FLANGE SPLIT CLAMPS 3000 PSI
(CODE 61)

Part No.	Flange size	A mm	B mm	C mm	D mm	E mm	H mm	P mm
SFFSC 3 08	1/2"	54.90 - 53.10	6.22	21.80	30.96	13	8.74	38.10
SFFSC 3 12	3/4"	65.80 - 64.30	6.22	24.90	38.89	14	10.31	47.63
SFFSC 3 16	1"	70.60 - 69.10	7.49	28.20	45.24	16	10.31	52.37
SFFSC 3 20	1 1/4"	80.30 - 78.50	7.49	35.30	51.59	14	11.91	58.72
SFFSC 3 24	1 1/2"	94.50 - 93.00	7.49	40.10	61.09	16	13.49	69.85
SFFSC 3 32	2"	103.10 - 100.10	9.02	47.20	72.24	16	13.49	77.77



SFFSC3



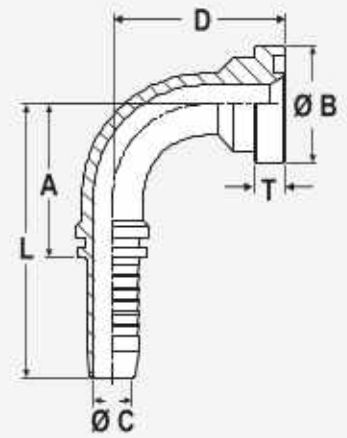
SFFL6

SF FL6 SAE J518 FLANGES 6000 PSI
(CODE 62)

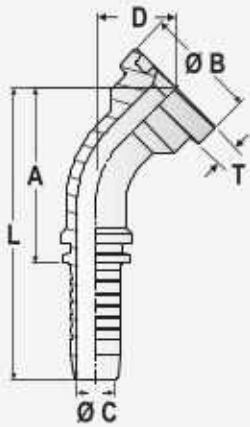
Part No.	Flange size	Flange Head Thickness T	Hose Bore		A	Ø B	Ø C	L
			Inches	mm	mm	mm	mm	mm
SFFL6 08 12	1/2"	7.75	1/2"	12.7	38.77	31.75	9.50	68.30
SFFL6 12 12	3/4"	8.76	1/2"	12.7	45.63	41.27	9.50	75.13
SFFL6 12 16	3/4"	8.76	5/8"	15.9	45.63	41.27	12.50	79.70
SFFL6 12 19	3/4"	8.76	3/4"	19.1	47.13	41.27	15.00	86.40
SFFL6 16 19	1"	9.53	3/4"	19.1	58.02	47.62	15.00	95.26
SFFL6 16 25	1"	9.52	1"	25.4	55.37	47.62	19.50	102.11
SFFL6 20 25	1 1/4"	10.29	1"	25.4	64.01	53.97	19.50	110.74
SFFL6 20 31	1 1/4"	10.29	1 1/4"	31.8	66.16	53.97	26.00	120.70
SFFL6 24 31	1 1/2"	12.57	1 1/4"	31.8	73.78	63.50	26.00	128.31
SFFL6 24 38	1 1/2"	12.57	1 1/2"	38.1	73.78	63.50	32.00	131.80
SFFL6 32 38	2"	12.57	1 1/2"	38.1	85.08	79.37	32.00	143.08
SFFL6 32 51	2"	12.57	2"	50.8	85.08	79.37	42.00	157.82

SFFL6 90° SAE J518 FLANGES 6000 PSI
(CODE 62)

Part No.	Flange Size	Flange Head Thickness T	Hose Bore	A	Ø B	Ø C	D	L	
			Inches	mm	mm	mm	mm	mm	
SFFL6 90 08 12	1/2"	7.75	1/2"	12.7	47.00	31.75	9.50	47.00	76.50
SFFL6 90 12 12	3/4"	8.76	1/2"	12.7	47.00	41.28	9.50	48.00	76.50
SFFL6 90 12 16	3/4"	8.76	5/8"	15.9	53.96	41.27	12.50	57.00	88.00
SFFL6 90 12 19	3/4"	8.78	3/4"	19.1	57.26	41.28	15.00	72.00	96.50
SFFL6 90 16 19	1"	9.53	3/4"	19.1	57.26	47.62	15.00	76.00	96.50
SFFL6 90 16 25	1"	9.52	1"	25.4	78.26	47.62	19.50	76.00	125.00
SFFL6 90 20 25	1 1/4"	10.29	1"	25.4	78.26	53.97	19.50	77.00	125.00
SFFL6 90 20 31	1 1/4"	10.29	1 1/4"	31.8	101.47	53.97	26.00	104.00	156.00
SFFL6 90 24 31	1 1/2"	12.57	1 1/4"	31.8	101.47	63.50	26.00	112.00	156.00
SFFL6 90 24 38	1 1/2"	12.57	1 1/2"	38.1	117.00	63.50	32.00	100.00	175.00
SFFL6 90 32 38	2"	12.57	1 1/2"	38.1	117.00	79.37	32.00	112.00	175.00
SFFL6 90 32 51	2"	12.57	2"	50.8	167.25	79.37	42.00	142.00	240.00



SFFL6 90°



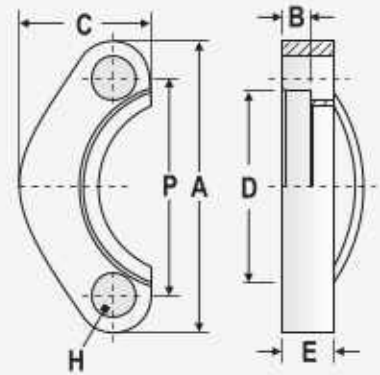
SFFL6 45°

SFFL6 45° SAE J518 FLANGES 6000 PSI
(CODE 62)

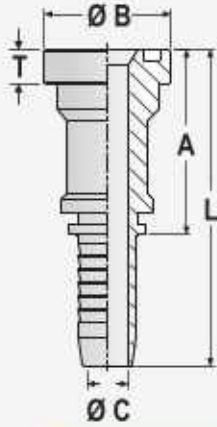
PIX Part No.	Flange Size	Flange Head Thickness T	Hose Bore Inches	mm	A mm	Ø B mm	Ø C mm	D mm	L mm
SFFL6 45 08 12	1/2"	7.75	1/2"	12.7	52.50	31.75	9.50	21.00	82.00
SFFL6 45 12 12	3/4"	8.76	1/2"	12.7	56.50	41.28	9.50	30.00	86.00
SFFL6 45 12 16	3/4"	8.76	5/8"	15.9	61.96	41.27	12.50	30.00	96.00
SFFL6 45 12 19	3/4"	8.78	3/4"	19.1	66.76	41.28	14.20	30.00	106.00
SFFL6 45 16 19	1"	9.53	3/4"	19.1	66.76	47.62	14.20	34.00	106.00
SFFL6 45 16 25	1"	9.52	1"	25.4	88.26	47.62	19.50	35.00	135.00
SFFL6 45 20 25	1 1/4"	10.29	1"	25.4	88.26	53.97	19.50	40.00	135.00
SFFL6 45 20 31	1 1/4"	10.29	1 1/4"	31.8	101.47	53.97	26.00	42.00	156.00
SFFL6 45 24 31	1 1/2"	12.57	1 1/4"	31.8	101.47	63.50	26.00	46.00	156.00
SFFL6 45 24 38	1 1/2"	12.57	1 1/2"	38.1	132.00	63.50	32.00	57.00	190.00
SFFL6 45 32 38	2"	12.57	1 1/2"	38.1	132.00	79.37	32.00	65.00	190.00
SFFL6 45 32 51	2"	12.57	2"	50.8	152.25	79.37	42.00	70.00	225.00

SFFSC6 FLANGE SPLIT CLAMPS 6000 PSI
(CODE 62)

Part No.	Flange Size	A mm	B mm	C mm	D mm	E mm	P mm	H mm
SFFSC 6 08	1/2"	57.20-55.60	7.24	22.60	32.54	16	40.49	8.74
SFFSC 6 12	3/4"	72.10-70.60	8.26	29.00	42.06	19	50.80	10.31
SFFSC 6 16	1"	81.80-80.30	9.02	33.80	48.41	24	57.15	11.91
SFFSC 6 20	1 1/4"	96.00-94.50	9.78	37.60	54.76	27	66.68	13.49
SFFSC 6 24	1 1/2"	114.30-111.30	12.07	46.50	64.29	30	79.38	16.66
SFFSC 6 32	2"	134.90-131.80	12.07	55.90	80.16	37	96.82	19.84



SFFSC6



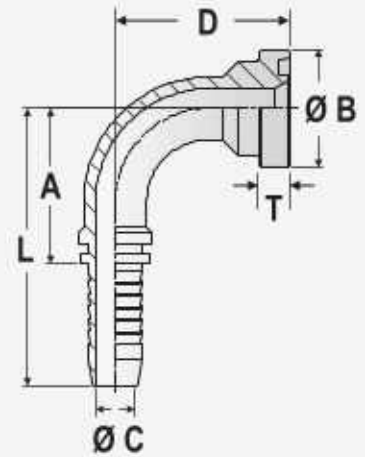
SFFLC

SFFLC FLANGES TYPE CAT

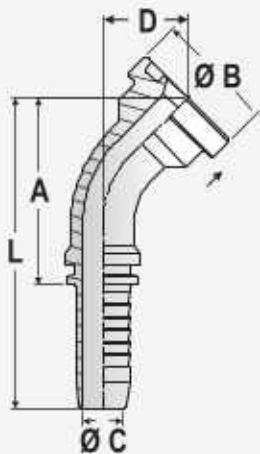
Part No.	Flange Size	Flange Head Thickness T	Hose Bore	Inches	mm	A	Ø B	Ø C	L
SFFLC 12 19	3/4"	14.50	3/4"	19.1	71.00	41.27	15.00	110.24	
SFFLC 16 19	1"	14.50	3/4"	19.1	75.50	47.62	15.00	114.74	
SFFLC 16 25	1"	14.50	1"	25.4	74.85	47.62	19.50	121.59	
SFFLC 20 25	1 1/4"	14.50	1"	25.4	83.85	53.97	19.50	130.60	
SFFLC 20 31	1 1/4"	14.50	1 1/4"	31.8	86.00	53.97	26.00	140.50	
SFFLC 24 31	1 1/2"	14.50	1 1/4"	31.8	93.50	63.50	26.00	148.00	
SFFLC 24 38	1 1/2"	14.50	1 1/2"	38.1	93.50	63.50	32.00	151.50	

SFFLC 90° FLANGES TYPE CAT

Part No.	Flange Size	Flange Head Thickness T	Hose Bore	Inches	mm	A	Ø B	Ø C	D	L
SFFLC 90 12 19	3/4"	14.50	3/4"	19.1	57.26	41.28	15.00	77.70	96.50	
SFFLC 90 16 19	1"	14.50	3/4"	19.1	57.26	47.62	15.00	81.00	96.50	
SFFLC 90 16 25	1"	14.50	1"	25.4	78.26	47.62	19.50	83.50	125.00	
SFFLC 90 20 25	1 1/4"	14.50	1"	25.4	78.26	53.97	19.50	84.50	125.00	
SFFLC 90 20 31	1 1/4"	14.50	1 1/4"	31.8	101.47	53.97	26.00	107.50	156.00	
SFFLC 90 24 31	1 1/2"	14.50	1 1/4"	31.8	101.47	63.50	26.00	109.00	156.00	
SFFLC 90 24 38	1 1/2"	14.50	1 1/2"	38.1	117.00	63.50	32.00	102.00	175.00	



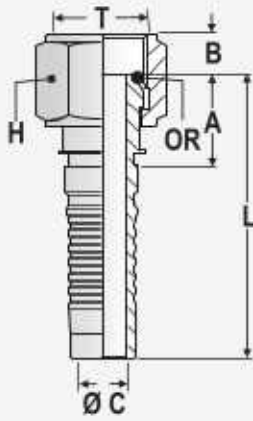
SFFLC 90°



SFFLC 45°

SFFLC 45° FLANGES TYPE CAT

Part No.	Flange Size	Flange Head Thickness T	Hose Bore	Inches	mm	A	Ø B	Ø C	D	L
SFFLC 45 12 19	3/4"	14.50	3/4"	19.1	66.76	41.28	14.20	34.00	106.00	
SFFLC 45 16 19	1"	14.50	3/4"	19.1	66.76	47.62	14.20	40.00	106.00	
SFFLC 45 16 25	1"	14.50	1"	25.4	96.76	47.62	19.50	46.00	136.00	
SFFLC 45 20 25	1 1/4"	14.50	1"	25.4	96.76	53.97	19.50	46.00	136.00	
SFFLC 45 20 31	1 1/4"	14.50	1 1/4"	31.8	103.47	53.97	26.00	46.00	158.00	
SFFLC 45 24 31	1 1/2"	14.50	1 1/4"	31.8	103.47	63.50	26.00	47.00	158.00	
SFFLC 45 24 38	1 1/2"	14.50	1 1/2"	38.1	132.00	63.50	32.00	48.00	190.00	



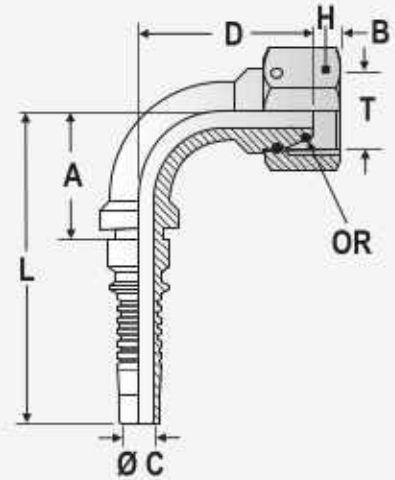
SFMDKOR

SFMDKOR INTERLOCK
BSP FEMALE 60° CONE O-RING

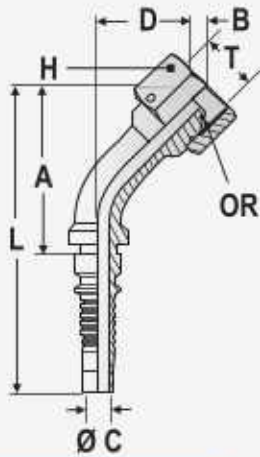
Part No.	Nut Type	Thread T	Hose Bore Inches	mm	A mm	B mm	Ø C mm	L mm	H mm	OR mm
SFMDKOR 12 19	b	3/4"-14	3/4"	19.1	26.0	7.30	14.00	88.50	32.00	17.1x1.6
SFMDKOR 16 25	b	1"-11	1"	25.4	28.5	10.55	19.00	102.20	41.00	22.1x1.6
SFMDKOR 20 31	b	1 1/4"-11	1 1/4"	31.8	36.0	10.25	25.00	116.20	50.00	29.1x1.6
SFMDKOR 24 38	b	1 1/2"-11	1 1/2"	38.1	42.6	12.73	31.00	124.00	55.00	35.1x1.6
SFMDKOR 32 51	b	2"-11	2"	50.8	44.0	16.04	42.00	148.00	70.00	48.1x1.6

SFMDKOR 90° INTERLOCK 90°
BSP FEMALE 60° CONE O-RING

Part No.	Nut Type	Thread T	Hose Bore Inches	mm	A mm	B mm	Ø C mm	L mm	D mm	H mm	OR mm
SFMDKOR 90 16 25	c	1"-11	1"	25.4	86.3	5.22	19	160.5	81	41	22.1x1.6
SFMDKOR 90 20 31	c	1 1/4"-11	1 1/4"	31.8	99.8	6.74	25	180.0	97	50	29.1x1.6
SFMDKOR 90 24 38	c	1 1/2"-11	1 1/2"	38.1	123.6	13.13	31	215.0	112	55	35.1x1.6
SFMDKOR 90 32 51	c	2"-11	2"	50.8	145.95	14.72	42	250.0	135	70	48.1x1.6



SFMDKOR 90°



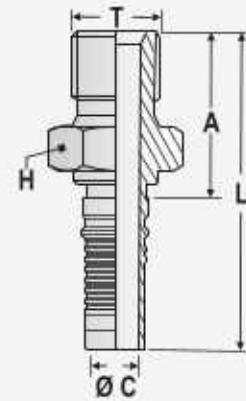
SFMDKOR 45°

SFMDKOR 45° INTERLOCK 45°
BSP FEMALE 60° CONE O-RING

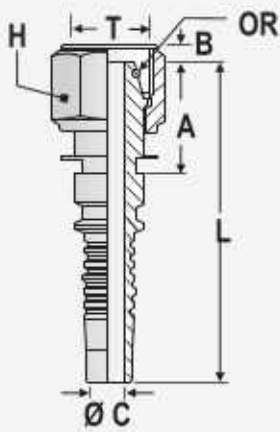
Part No.	Nut Type	Thread T	Hose Bore Inches	mm	A mm	B mm	Ø C mm	L mm	D mm	H mm	OR mm
SFMDKOR 45 16 25	c	1"-11	1"	25.4	91.3	5.22	19.0	165	39	41.0	22.1x1.6
SFMDKOR 45 20 31	c	1 1/4"-11	1 1/4"	31.8	119.8	6.74	25.0	200	52	50.0	29.1x1.6
SFMDKOR 45 24 38	c	1 1/2"-11	1 1/2"	38.1	143.6	13.13	31.0	235	60	55.0	35.1x1.6
SFMDKOR 45 32 51	c	2"-11	2"	50.8	170.95	14.72	42.0	275	70	70.0	48.1x1.6

SFMAGR INTERLOCK BSP 60°
CONE MALE

Part No.	Nut Type	Thread T	Hose Bore Inches	mm	A mm	Ø C mm	L mm	H mm
SFMAGR 12 19	-	3/4"-14	3/4"	19.1	38.77	14.00	101.3	32.00
SFMAGR 16 25	-	1"-11	1"	25.4	42.77	19.00	116.5	38.00
SFMAGR 20 31	-	1 1/4"-11	1 1/4"	31.8	48.78	25.00	128.9	50.00
SFMAGR 24 38	-	1 1/2"-11	1 1/2"	38.1	51.38	31.00	132.8	55.00
SFMAGR 32 51	-	2"-11	2"	50.8	56.00	42.00	160.0	70.00



SFMAGR



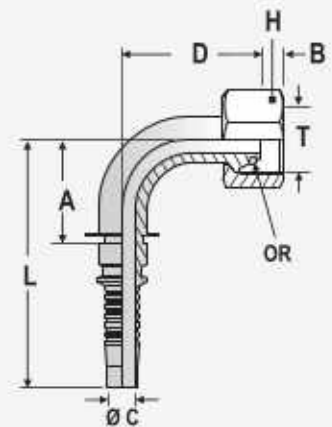
SFMDKOS

SFMDKOS INTERLOCK METRIC FEMALE 24°
CONE O-RING

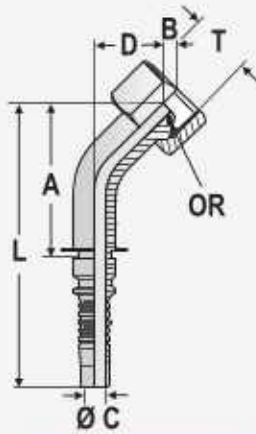
Part No.	Nut Type	Thread T	Hose Bore Inches	mm	A mm	B mm	Ø C mm	L mm	H mm	OR mm
SFMDKOS 20 19	b	30x2.0	3/4"	19.1	35.29	3.71	14.00	97.79	36.00	16.3x2.4
SFMDKOS 25 19	b	36x2.0	3/4"	19.1	38.00	5.92	14.00	100.00	46.00	20.3x2.4
SFMDKOS 30 25	b	42x2.0	1"	25.4	40.50	6.20	19.00	114.20	50.00	25.3x2.4
SFMDKOS 38 31	b	52x2.0	1 1/4"	31.8	46.50	7.80	25.00	126.70	60.00	33.3x2.4

SFMDKOS 90° INTERLOCK 90° METRIC FEMALE 24°
CONE O-RING

Part No.	Nut Type	Thread T	Hose Bore Inches	mm	A mm	B mm	Ø C mm	D mm	L mm	H mm	OR mm
SFMDKOS 90 20 19	b	30x2.0	3/4"	19.1	64.5	3.71	14.0	57.0	127.0	36.0	16.3x2.4
SFMDKOS 90 25 19	b	36x2.0	3/4"	19.1	64.5	5.92	14.0	57.0	127.0	46.0	20.3x2.4
SFMDKOS 90 30 25	b	42x2.0	1"	25.4	81.3	6.20	19.0	73.0	155.0	50.0	25.3x2.4
SFMDKOS 90 38 31	b	52x2.0	1 1/4"	31.8	104.8	7.80	25.0	90.0	185.0	60.0	33.3x2.4



SFMDKOS 90°



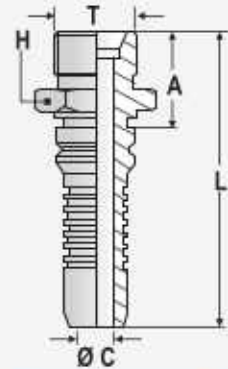
SFMDKOS 45°

SFMDKOS 45° INTERLOCK 45° METRIC FEMALE 24°
CONE O-RING

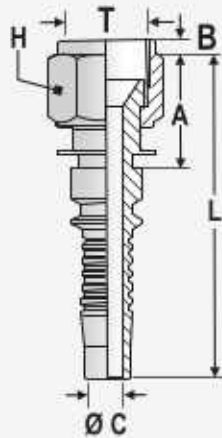
Part No.	Nut Type	Thread T	Hose Bore Inches	mm	A mm	B mm	Ø C mm	D mm	L mm	H mm	OR mm
SFMDKOS 45 20 19	b	30x2.0	3/4"	19.1	70.5	3.71	14.0	26.0	133.0	36.0	16.3x2.4
SFMDKOS 45 25 19	b	36x2.0	3/4"	19.1	71.5	5.92	14.0	31.0	134.0	46.0	20.3x2.4
SFMDKOS 45 30 25	b	42x2.0	1"	25.4	69.3	6.20	19.0	35.0	143.0	50.0	25.3x2.4
SFMDKOS 45 38 31	b	52x2.0	1 1/4"	31.8	109.8	7.80	25.0	42.0	190.0	60.0	33.3x2.4

SFMCES INTERLOCK METRIC
MALE 24° DIN 3861

Part No.	Nut Type	Thread T	Hose Bore Inches	mm	A mm	Ø C mm	L mm	H mm
SFMCES 20 19	-	30x2.0	3/4"	19.1	38.77	14.00	101.30	32.00
SFMCES 25 19	-	36x2.0	3/4"	19.1	40.80	14.00	103.30	41.00
SFMCES 30 25	-	42x2.0	1"	25.4	43.84	19.00	118.20	46.00
SFMCES 38 31	-	52x2.0	1 1/4"	31.8	50.88	25.00	131.10	55.00



SFMCES



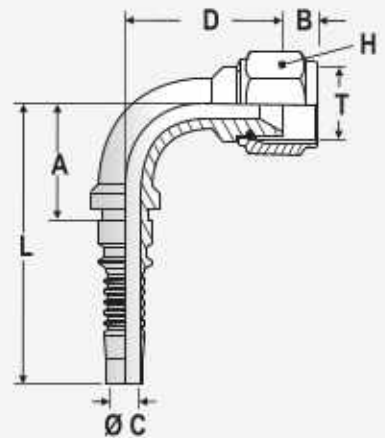
SFMDKJ

SFMDKJ INTERLOCK JIC
FEMALE 74° CONE

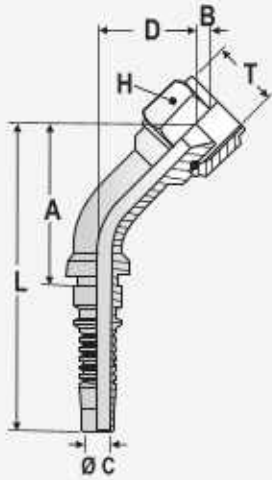
Part No.	Nut Type	Thread T	Hose Bore Inches	Hose Bore mm	A mm	B mm	Ø C mm	L mm	H mm
SFMDKJ 17 19	b	1 1/16"-12UN	3/4"	19.1	28.0	14.00	14.00	90.50	32.00
SFMDKJ 21 25	b	1 5/16"-12UN	1"	25.4	31.0	15.00	19.00	104.70	41.00
SFMDKJ 26 31	b	1 5/8"-12UN	1 1/4"	31.8	35.0	14.30	25.00	115.20	50.00
SFMDKJ 30 38	b	1 7/8"-12UN	1 1/2"	38.1	37.6	20.00	31.00	129.00	55.00
SFMDKJ 40 51	b	2 1/2"-12UN	2"	50.8	43.0	24.00	42.00	147.00	75.00

SFMDKJ 90° INTERLOCK 90° JIC
FEMALE 74° CONE

Part No.	Nut Type	Thread T	Hose Bore Inches	Hose Bore mm	A mm	B mm	Ø C mm	D mm	L mm	H mm
SFMDKJ 90 21 25	c	1 5/16"-12	1"	25.4	86.3	15.34	19.00	79.00	180.00	41.00
SFMDKJ 90 26 31	c	1 5/8"-12	1 1/4"	31.8	99.8	15.75	25.00	94.00	180.00	50.00
SFMDKJ 90 30 38	c	1 7/8"-12	1 1/2"	38.1	123.6	21.06	31.00	115.50	215.00	55.00
SFMDKJ 90 40 51	c	2 1/2"-12	2"	50.8	145.95	24.11	42.00	135.00	250.00	70.00



SFMDKJ 90°



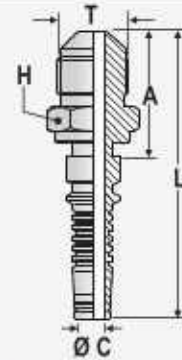
SFMDKJ 45°

SFMDKJ 45° INTERLOCK 45° JIC FEMALE 74° CONE

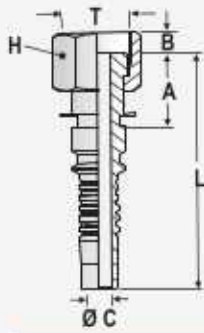
Part No.	Nut Type	Thread	Hose Bore	A	B	Ø C	D	L	H
			Inches mm	mm	mm	mm	mm	mm	mm
SFMDKJ 45 21 25	c	1 5/16"-12	1" 25.4	91.3	15.34	19.00	37.50	165.00	41.00
SFMDKJ 45 26 31	c	1 5/8"-12	1 1/4" 31.8	119.8	15.75	25.00	50.00	200.00	50.00
SFMDKJ 45 30 38	c	1 7/8"-12	1 1/2" 38.1	143.6	21.06	31.00	60.00	235.00	55.00
SFMDKJ 45 40 51	c	2 1/2"-12	2" 50.8	170.95	24.11	42.00	70.00	275.00	70.00

SFMAGJ INTERLOCK JIC 74° MALE

Part No.	Nut Type	Thread T	Hose Bore	A	Ø C	L	H
			Inches mm	mm	mm	mm	mm
SFMAGJ 17 19	-	1 1/16"-12UN	3/4" 19.1	44.72	14.00	106.70	32.00
SFMAGJ 21 25	-	1 5/16"-12UN	1" 25.4	46.91	19.00	121.60	38.00
SFMAGJ 26 31	-	1 5/8"-12UN	1 1/4" 31.8	53.11	25.00	133.30	48.00
SFMAGJ 30 38	-	1 7/8"-12UN	1 1/2" 38.1	56.89	31.00	138.30	52.00
SFMAGJ 40 51	-	2 1/2"-12UN	2" 50.8	64.86	42.00	168.90	70.00



SFMAGJ



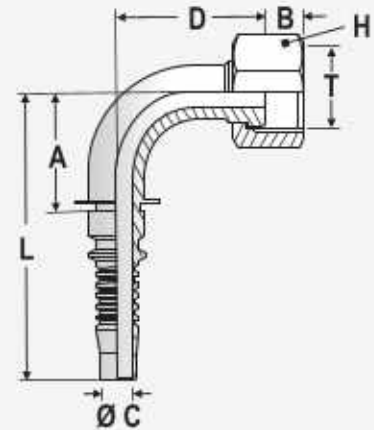
SFMORFS

SFMORFS INTERLOCK FACE SEAL FEMALE FITTINGS
ISO 12151-1 (ISO 8434-3)

Part No.	Nut Type	Thread T	Hose Bore		A mm	B mm	Ø C mm	L mm	H mm
			Inches	mm					
SFMORFS 19 19	b	1 3/16"-12UN	3/4"	19.1	32.65	14.51	14.00	95.10	36.00
SFMORFS 23 25	b	1 7/16"-12UN	1"	25.4	34.70	14.67	19.00	108.40	41.00
SFMORFS 27 31	b	1 11/16"-12UN	1 1/4"	31.8	35.70	13.52	25.00	115.90	50.00
SFMORFS 32 38	b	2"-12UN	1 1/2"	38.1	36.30	13.52	31.00	127.70	60.00

SFMORFS 90 INTERLOCK FACE SEAL FEMALE
90° FIT TINGS ISO 12151-1 (ISO 8434-3)

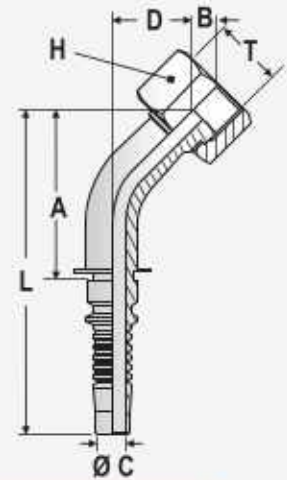
Part No.	Nut Type	Thread T	Hose Bore		A mm	B mm	Ø C mm	D mm	L mm	H mm
			Inches	mm						
SFMORFS 90 19 19	b	1 3/16"-12UN	3/4"	19.1	64.5	14.51	14.00	57.00	127.00	36.00
SFMORFS 90 23 25	b	1 7/16"-12UN	1"	25.4	86.3	14.67	19.00	70.00	160.00	41.00
SFMORFS 90 27 31	b	1 11/16"-12UN	1 1/4"	31.8	94.8	13.52	25.00	75.00	175.00	50.00
SFMORFS 90 32 38	b	2"-12UN	1 1/2"	38.1	113.6	13.52	31.00	88.00	205.00	60.00



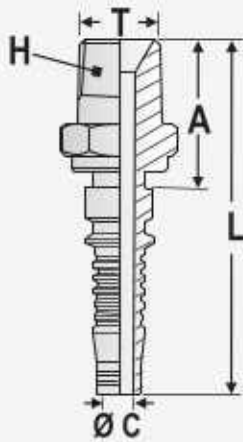
SFMORFS 90°

SFMORFS 45° INTERLOCK FACE SEAL FEMALE
45° FITTINGS ISO 12151-1 (ISO 8434-3)

Part No.	Nut Type	Thread T	Hose Bore		A	B	Ø C	D	L	H
			Inches	mm						
SFMORFS 45 19 19	b	1 3/16"-12UN	3/4"	19.1	72.5	14.51	14.00	26.00	135.00	36.00
SFMORFS 45 23 25	b	1 7/16"-12UN	1"	25.4	86.3	14.67	19.00	32.00	160.00	41.00
SFMORFS 45 27 31	b	1 11/16"-12UN	1 1/4"	31.8	99.8	13.52	25.00	37.00	180.00	50.00
SFMORFS 45 32 38	b	2"-12UN	1 1/2"	38.1	118.6	13.52	31.00	45.00	210.00	60.00



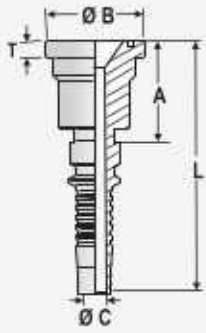
SFMORFS 45°



SFMAGN

SFMAGN INTERLOCK NPT MALE

Part No.	Nut Type	Thread T	Hose Bore		A	Ø C	L	H
			Inches	mm				
SFMAGN 12 19	-	3/4"-14	3/4"	19.1	41.82	14.00	101.30	30.00
SFMAGN 16 25	-	1"-11.5	1"	25.4	47.65	19.00	117.50	38.00
SFMAGN 20 31	-	1 1/4"-11.5	1 1/4"	31.8	53.42	25.00	133.60	46.00
SFMAGN 24 38	-	1 1/2"-11.5	1 1/2"	38.1	54.78	31.00	136.20	50.00
SFMAGN 32 51	-	2"-11.5	2"	50.8	57.16	42.00	161.20	65.00



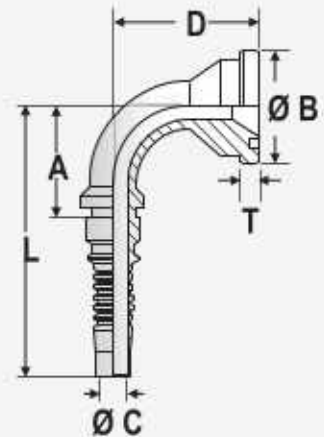
SFMFL3

SFMFL3 SAE J518 FLANGES 3000 PSI
CODE 61

Part No.	Flange Size	Flange Head Thickness T	Hose Bore		A mm	Ø B mm	Ø C mm	L mm
			Inches	mm				
SFMFL3 12 19	3/4"	6.73	3/4"	19.1	41.83	38.10	14.00	104.30
SFMFL3 16 19	1"	8.00	3/4"	19.1	47.76	44.45	14.00	110.30
SFMFL3 16 25	1"	8.00	1"	25.4	48.76	44.45	19.00	122.50
SFMFL3 20 25	1 1/4"	8.00	1"	25.4	52.48	50.80	19.00	126.20
SFMFL3 20 31	1 1/4"	8.00	1 1/4"	31.8	53.48	50.80	25.00	133.70
SFMFL3 24 31	1 1/2"	7.87	1 1/4"	31.8	57.80	60.32	25.00	138.00
SFMFL3 24 38	1 1/2"	7.87	1 1/2"	38.1	58.40	60.32	31.00	149.80
SFMFL3 32 38	2"	9.52	1 1/2"	38.1	61.83	71.42	31.00	153.20
SFMFL3 32 51	2"	9.52	2"	50.8	63.23	71.42	42.00	167.30

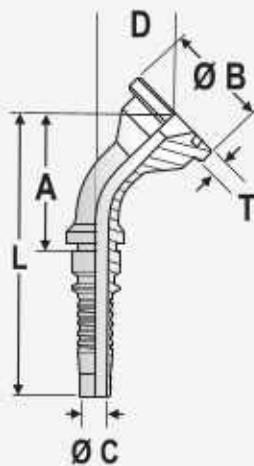
SFMFL3 90° INTERLOCK 90° SAE J518 FLANGES
3000 PSI CODE 61

Part No.	Flange Size	Flange Head Thickness T	Hose Bore		A mm	Ø B mm	Ø C mm	D mm	L mm
			Inches	mm					
SFMFL3 90 12 19	3/4"	6.73	3/4"	19.1	61.80	38.10	14.00	72.00	124.30
SFMFL3 90 16 19	1"	8.00	3/4"	19.1	61.80	44.45	14.00	78.30	124.30
SFMFL3 90 16 25	1"	8.00	1"	25.4	86.30	44.45	19.00	75.00	160.00
SFMFL3 90 20 25	1 1/4"	8.00	1"	25.4	86.30	50.80	19.00	82.00	160.00
SFMFL3 90 20 31	1 1/4"	8.00	1 1/4"	31.8	99.80	50.80	25.00	95.00	180.00
SFMFL3 90 24 31	1 1/2"	8.00	1 1/4"	31.8	99.80	60.32	25.00	104.00	180.00
SFMFL3 90 24 38	1 1/2"	8.00	1 1/2"	38.1	117.60	60.32	31.00	105.00	209.00
SFMFL3 90 32 38	2"	9.52	1 1/2"	38.1	117.60	71.42	31.00	117.00	209.00
SFMFL3 90 32 51	2"	9.52	2"	50.8	145.95	71.42	42.00	140.00	250.00



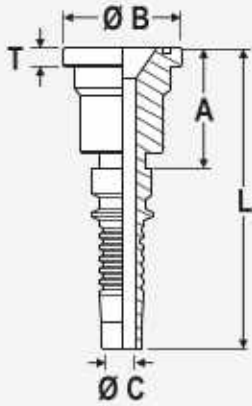
SFMFL3 90°

SFMFL3 45° INTERLOCK 45° SAE J518 FLANGES 3000 PSI
CODE 61



SFMFL3 45°

Part No.	Flange Size	Flange Head Thickness T	Hose Bore		A mm	Ø B mm	Ø C mm	D mm	L mm
			Inches	mm					
SFMFL3 45 12 19	3/4"	6.73	3/4"	19.1	71.3	38.10	14.00	28.00	133.80
SFMFL3 45 16 19	1"	8.00	3/4"	19.1	72.5	44.45	14.00	28.00	135.00
SFMFL3 45 16 25	1"	8.00	1"	25.4	100.3	44.45	19.00	30.00	174.00
SFMFL3 45 20 25	1 1/4"	8.00	1"	25.4	100.3	50.80	19.00	36.00	174.00
SFMFL3 45 20 31	1 1/4"	8.00	1 1/4"	31.8	107.0	50.80	25.00	36.00	187.20
SFMFL3 45 24 31	1 1/2"	8.00	1 1/4"	31.8	107.0	60.32	25.00	42.00	187.20
SFMFL3 45 24 38	1 1/2"	8.00	1 1/2"	38.1	128.1	60.32	31.00	44.00	219.50
SFMFL3 45 32 38	2"	9.52	1 1/2"	38.1	128.1	71.42	31.00	53.00	219.50
SFMFL3 45 32 51	2"	9.52	2"	50.8	162.75	71.42	42.00	53.00	266.80



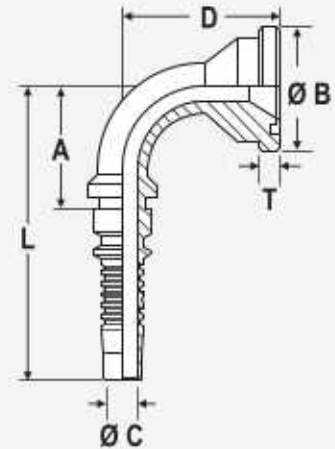
SFMFL6

SFMFL6 INTERLOCK SAE J518 FLANGES 6000 PSI (CODE 62)

Part No.	Flange Size	Flange Head Thickness T	Hose Bore		A	Ø B	Ø C	L
			Inches	mm	mm	mm	mm	mm
SFMFL6 12 19	3/4"	8.76	3/4"	19.1	45.13	41.27	14.00	107.60
SFMFL6 16 19	1"	9.53	3/4"	19.1	54.02	47.62	14.00	116.50
SFMFL6 16 25	1"	9.52	1"	25.4	55.02	47.62	19.00	128.70
SFMFL6 20 25	1 1/4"	10.29	1"	25.4	63.66	53.97	19.00	137.40
SFMFL6 20 31	1 1/4"	10.29	1 1/4"	31.8	63.66	53.97	25.00	144.90
SFMFL6 24 31	1 1/2"	12.57	1 1/4"	31.8	72.28	63.50	25.00	152.50
SFMFL6 24 38	1 1/2"	12.57	1 1/2"	38.1	72.88	63.50	31.00	164.30
SFMFL6 32 38	2"	12.57	1 1/2"	38.1	84.18	79.37	31.00	175.60
SFMFL6 32 51	2"	12.57	2"	50.8	85.58	79.37	42.00	189.60

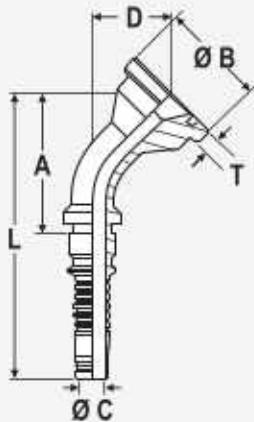
SFMFL6 90° INTERLOCK 90° SAE J518 FLANGES 6000 PSI (CODE 62)

Part No.	Flange Size	Flange Head Thickness T	Hose Bore		A	Ø B	Ø C	D	L
			Inches	mm	mm	mm	mm	mm	mm
SFMFL6 90 12 19	3/4"	8.76	3/4"	19.1	61.80	41.27	14.00	62.00	124.30
SFMFL6 90 16 19	1"	9.53	3/4"	19.1	61.80	47.62	14.00	85.20	124.30
SFMFL6 90 16 25	1"	9.52	1"	25.4	86.30	47.62	19.00	92.00	160.00
SFMFL6 90 20 25	1 1/4"	10.29	1"	25.4	86.30	53.97	19.00	92.00	160.00
SFMFL6 90 20 31	1 1/4"	10.29	1 1/4"	31.8	99.80	53.97	25.00	103.00	180.00
SFMFL6 90 24 31	1 1/2"	12.57	1 1/4"	31.8	99.80	63.50	25.00	115.00	180.00
SFMFL6 90 24 38	1 1/2"	12.57	1 1/2"	38.1	117.80	63.50	31.00	116.00	209.00
SFMFL6 90 32 38	2"	12.57	1 1/2"	38.1	117.60	79.37	31.00	139.00	209.00
SFMFL6 90 32 51	2"	12.57	2"	50.8	145.95	79.37	42.00	162.00	250.00



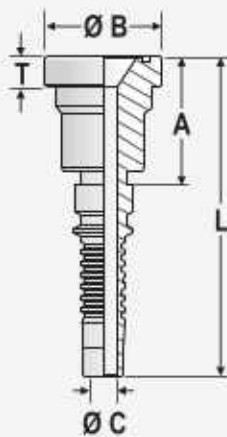
SFMFL6 90°

FSMFL6 45° INTERLOCK 45° SAE J518 FLANGES 6000 PSI (CODE 62)



FSMFL6 45°

Part No.	Flange Size	Flange Head Thickness T	Hose Bore		A	Ø B	Ø C	D	L
			Inches	mm	mm	mm	mm	mm	mm
SFMFL6 45 12 19	3/4"	8.76	3/4"	19.1	71.30	41.27	14.00	31.00	133.80
SFMFL6 45 16 19	1"	9.53	3/4"	19.1	72.50	47.62	14.00	33.00	135.00
SFMFL6 45 16 25	1"	9.52	1"	25.4	102.90	47.62	19.00	34.80	176.60
SFMFL6 45 20 25	1 1/4"	10.29	1"	25.4	102.90	53.97	19.00	41.60	176.60
SFMFL6 45 20 31	1 1/4"	10.29	1 1/4"	31.8	107.00	53.97	25.00	41.80	187.20
SFMFL6 45 24 31	1 1/2"	12.57	1 1/4"	31.8	107.00	63.50	25.00	49.70	187.20
SFMFL6 45 24 38	1 1/2"	12.57	1 1/2"	38.1	128.10	63.50	31.00	51.70	219.50
SFMFL6 45 32 38	2"	12.57	1 1/2"	38.1	128.10	79.37	31.00	68.50	219.50
SFMFL6 45 32 51	2"	12.57	2"	50.8	162.75	79.37	42.00	75.00	266.80



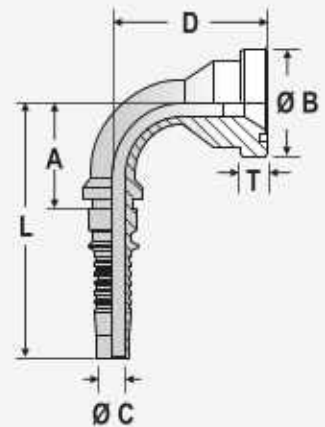
SFMFLC

SFMFLC INTETRLOCK
FLANGES TYPE CAT

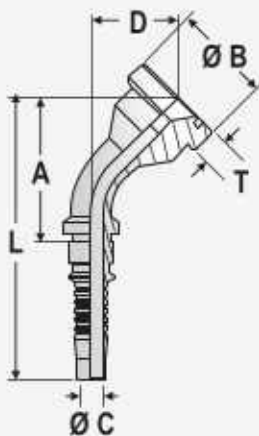
Part No.	Flange Size	Flange Head Thickness T	Hose Bore		A	Ø B	Ø C	L
			Inches	mm				
SFMFLC 12 19	3/4"	14.50	3/4"	19.1	85.00	41.27	14.00	14.0
SFMFLC 16 19	1"	14.50	3/4"	19.1	69.00	47.62	14.00	14.0
SFMFLC 16 25	1"	14.50	1"	25.4	70.00	47.62	19.00	19.0
SFMFLC 20 25	1 1/4"	14.50	1"	25.4	80.00	53.97	19.00	19.0
SFMFLC 20 31	1 1/4"	14.50	1 1/4"	31.8	81.00	53.97	25.00	25.0
SFMFLC 24 31	1 1/2"	14.50	1 1/4"	31.8	88.00	63.50	25.00	25.0
SFMFLC 24 38	1 1/2"	14.50	1 1/2"	38.1	88.60	63.50	31.00	31.0

SFMFLC 90° INTERLOCK 90°
FLANGES TYPE CAT

Part No.	Flange Size	Flange Head Thickness T	Hose Bore		A	Ø B	Ø C	D	L
			Inches	mm					
SFMFLC 90 12 19	3/4"	14.50	3/4"	19.1	67.5	41.27	14.00	89.00	130.00
SFMFLC 90 16 19	1"	14.50	3/4"	19.1	67.5	47.62	14.00	79.00	130.00
SFMFLC 90 16 25	1"	14.50	1"	25.4	82.3	47.62	19.00	77.50	156.00
SFMFLC 90 20 25	1 1/4"	14.50	1"	25.4	82.3	53.97	19.00	82.50	156.00
SFMFLC 90 20 31	1 1/4"	14.50	1 1/4"	31.8	99.8	53.97	25.00	103.00	180.00
SFMFLC 90 24 31	1 1/2"	14.50	1 1/4"	31.8	99.8	63.50	25.00	109.00	180.00
SFMFLC 90 24 38	1 1/2"	14.50	1 1/2"	38.1	128.6	63.50	31.00	117.00	210.00



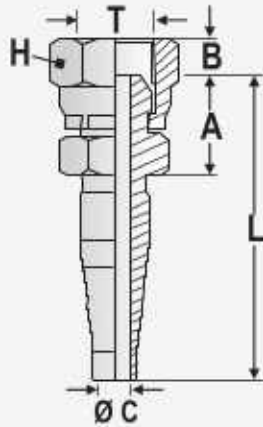
SFMFLC 90°



SFMFLC 90°

SFMFLC 45 INTERLOCK
45° FLANGES T TYPE CAT

Part No.	Flange Size	Flange Head Thickness T	Hose Bore		A	Ø B	Ø C	D	L
			Inches	mm					
SFMFLC 45 12 19	3/4"	14.50	3/4"	19.1	75.5	41.27	14.00	34.50	138.00
SFMFLC 45 16 19	1"	14.50	3/4"	19.1	75.5	47.62	14.00	38.00	138.00
SFMFLC 45 16 25	1"	14.50	1"	25.4	96.3	47.62	19.00	39.00	170.00
SFMFLC 45 20 25	1 1/4"	14.50	1"	25.4	96.3	53.97	19.00	43.00	170.00
SFMFLC 45 20 31	1 1/4"	14.50	1 1/4"	31.8	109.8	53.97	25.00	46.00	190.00
SFMFLC 45 24 31	1 1/2"	14.50	1 1/4"	31.8	109.8	63.50	25.00	49.00	190.00
SFMFLC 45 24 38	1 1/2"	14.50	1 1/2"	38.1	132.6	63.50	31.00	55.00	214.00



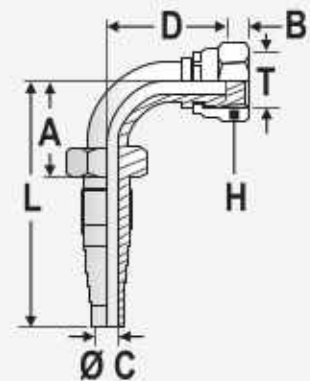
SFRB04

SFRB04 REUSABLE INSERTS - BSP
FEMALE 60° SEAT

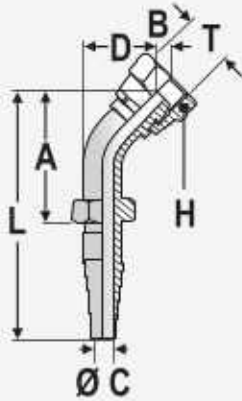
Part No.	Nut Type	Thread T	Hose Bore		A mm	B mm	Ø C mm	L mm	H mm
			Inches	mm					
SFRB04 04 04	a	1/4"-19	1/4"	6.4	17.40	5.55	4.00	56.78	56.78
SFRB04 06 06	a	3/8"-19	3/8"	9.5	18.74	5.99	7.14	63.19	63.19
SFRB04 08 08	a	1/2"-14	3/8"	9.5	22.96	6.50	7.54	67.41	67.41
SFRB04 08 08	a	1/2"-14	1/2"	12.7	22.96	6.50	9.93	69.93	69.93
SFRB04 12 12	a	3/4"-14	3/4"	19.1	25.57	8.71	15.47	83.49	83.49
SFRB04 16 16	a	1"-11	1"	25.4	28.75	10.49	21.82	96.06	96.06

SFRB23 REUSABLE INSERTS - BSP 90° SWEPT ELBOW

Part No.	Nut Type	Thread T	Hose Bore		A mm	B mm	Ø C mm	D mm	L mm	H mm
			Inches	mm						
SFRB23 04 04	a	1/4"-14	1/4"	6.4	27.15	5.55	4.00	28.00	66.27	19.00
SFRB23 06 06	a	3/8"-19	3/8"	9.5	16.80	6.25	7.14	42.00	61.25	22.00
SFRB23 08 08	a	1/2"-14	1/2"	12.7	22.19	6.75	9.50	45.00	69.18	27.00
SFRB23 12 12	a	3/4"-14	3/4"	19.1	51.26	8.71	15.50	58.00	109.17	32.00



SFRB23



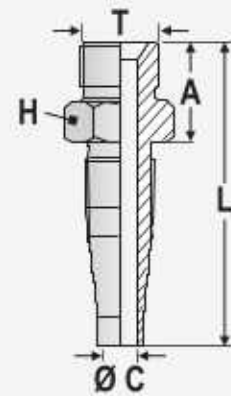
SFRB25°

SFRB25 REUSABLE INSERTS - BSP 45° SWEEP ELBOW

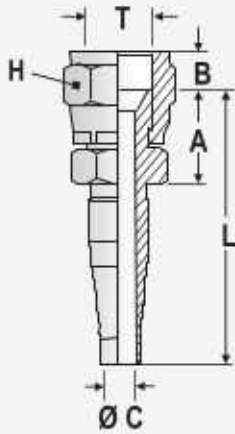
PIX Part No.	Nut Type	Thread T	Hose Bore		A mm	B mm	Ø C mm	D mm	L mm	H mm
			Inches	mm						
SFRB25 04 04	a	1/4"-19	1/4"	6.4	37.18	5.55	4.00	14.50	76.30	19.00
SFRB25 06 06	a	3/8"-19	3/8"	9.5	42.55	6.25	7.14	19.00	87.00	22.00
SFRB25 08 08	a	1/2"-14	1/2"	12.7	47.51	6.75	9.50	24.00	94.50	27.00

SFRB60 REUSABLE INSERTS - BSP MALE PARALLEL 60° SEAT

Part No.	Nut Type	Thread T	Hose Bore		A mm	Ø C mm	L mm	H mm
			Inches	mm				
SFRB60 04 04	-	1/4"-19	1/4"	6.4	18.03	4.22	57.15	19.00
SFRB60 06 06	-	3/8"-19	3/8"	9.5	21.26	7.14	65.80	22.00
SFRB60 08 06	-	1/2"-14	3/8"	9.5	24.38	7.14	68.83	27.00
SFRB60 08 08	-	1/2"-14	1/2"	12.7	24.29	9.93	71.30	27.00



SFRB60°



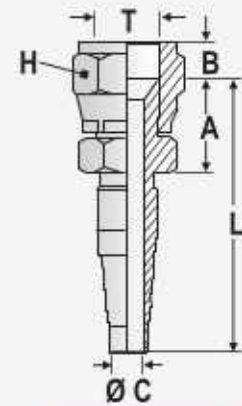
SFRML

SFRML REUSABLE INSERTS - METRIC FEMALE DKL

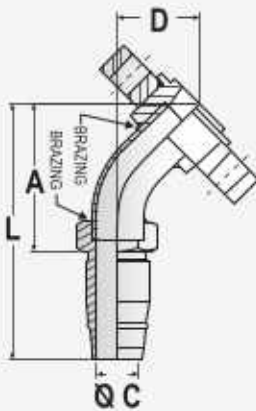
Part No.	Nut Type	Thread T	Hose Bore		A mm	B mm	Ø C mm	L mm	H mm
			Inches	mm					
SFRML4 22 08	a	22x1.5	1/2"	12.7	22.12	11.68	9.93	69.11	27.00

SFRJ04 -REUSABLE INSERTS - JIC FEMALE 37° SEAT

Part No.	Nut Type	Thread T	Hose Bore		A mm	B mm	Ø C mm	L mm	H mm
			Inches	mm					
SFRJ04 12 08	a	3/4" 16UNF	1/2"	12.7	19.55	10.79	9.93	66.55	22.00
SFRJ04 14 10	a	7/8" 14UNF	5/8"	15.9	22.10	12.78	13.11	27.80	27.00



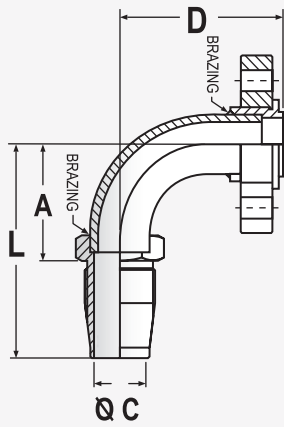
SFRJ04



SFEFL 45°

SFEFL 45° REUSABLE INSERTS FLANGE FOR A.C. HOSE

Part No.	Flange Size	Hose Bore		A mm	Ø C mm	D mm	L mm
		Inches	mm				
SFEFL 45 12 22	3/4"	7/8"	22.2	63.00	18.00	35.00	110.00
SFEFL 45 12 28	3/4"	1 1/8"	28.5	68.50	21.00	37.00	115.00



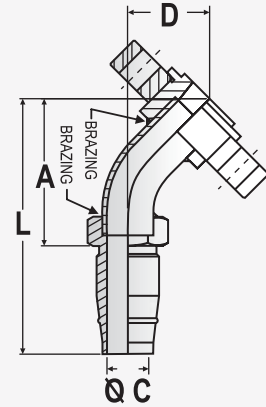
SFEFL 90°

SFEFL 90° REUSABLE INSERTS FLANGE FOR A.C. HOSE

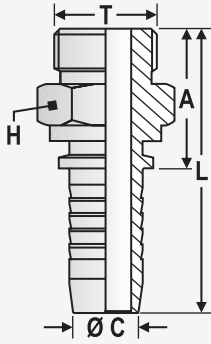
Part No.	Flange Size	Hose Bore		A mm	Ø C mm	D mm	L mm
		Inches	mm				
SFEFL 90 12 22	3/4"	7/8"	22.2	47.50	19.00	68.00	95.00
SFEFL 90 12 28	3/4"	1 1/8"	28.5	55.00	24.50	77.00	101.00

SFEFL 45° REUSABLE INSERTS FLANGE FOR A.C. HOSE

Part No.	Flange Size	Hose Bore		A mm	Ø C mm	D mm	L mm
		Inches	mm				
SFEFL 45 12 22	3/4"	7/8"	22.2	63.00	18.00	35.00	110.00
SFEFL 45 12 28	3/4"	1 1/8"	28.5	68.50	21.00	37.00	115.00



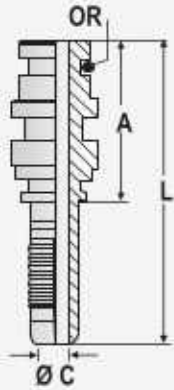
SFEFL 45°



SF ASORB

SFASORB SAE O - RING BOSS MALE

Part No.	Thread T	Hose Bore Inches	Hose Bore mm	A mm	Ø C mm	L mm	H mm	OR mm
SFASORB 12 12	3/4"-16	1/2"	12.7	28.28	9.5	57.78	22	16.36X2.21
SFASORB 12 10	3/4"-16	3/8"	9.5	27.10	7.0	56.82	22	16.36X2.21
SFASORB 09 10	9/16"-18	3/8"	9.5	25.20	7.0	54.92	17	11.89X1.98



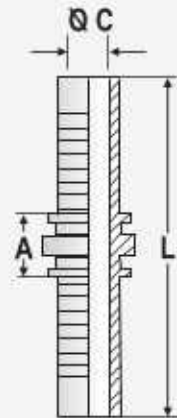
SFASL

SFASL STAPLE LOCK MALE

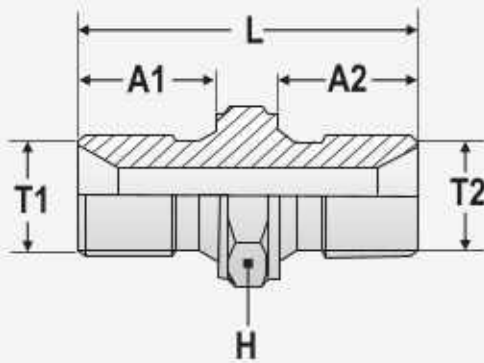
Part No.	Insert size	Hose Bore		A mm	Ø C mm	L mm	OR mm
		Inches	mm				
SFASL 06 10	3/8"	3/8"	9.5	33.32	7.00	63.29	10x2.0
SFASL 08 12	1/2"	1/2"	12.7	34.08	9.50	65.58	13x2.5
SFASL 12 19	3/4"	3/4"	19.1	34.59	15.00	74.00	19x2.5

SFDDI DOUBLE INSERT

Part No.	Insert size	Hose Bore		A mm	Ø C mm	L mm
		Inches	mm			
SFDDI 06 06	1/4"	1/4"	6.4	15.64	4.00	71.64
SFDDI 08 08	5/16"	5/16"	7.9	17.00	5.50	73.00
SFDDI 10 10	3/8"	3/8"	9.5	17.64	7.00	77.08
SFDDI 12 12	1/2"	1/2"	12.7	21.16	9.50	84.15
SFDDI 16 16	5/8"	5/8"	15.9	23.00	12.50	91.08
SFDDI 19 19	3/4"	3/4"	19.1	28.00	15.00	106.48
SFDDI 25 25	1"	1"	25.4	28.70	19.50	122.18
SFDDI 31 31	1 1/4"	1 1/4"	31.8	35.00	26.00	144.06
SFDDI 38 38	1 1/2"	1 1/2"	38.1	37.00	32.00	153.00
SFDDI 51 51	2"	2"	50.8	39.00	42.00	184.50



SFDDI



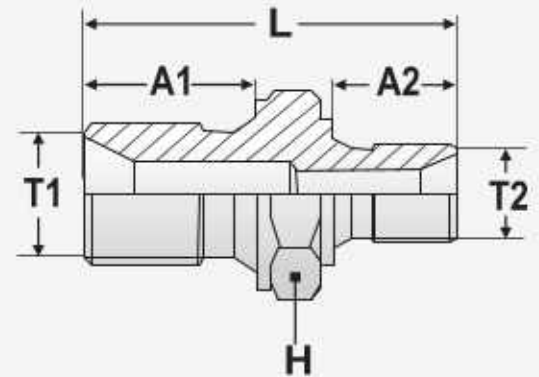
SFMGM G

SFMGMG: BSP PARALLEL MALE -
BSP PARALLEL MALE

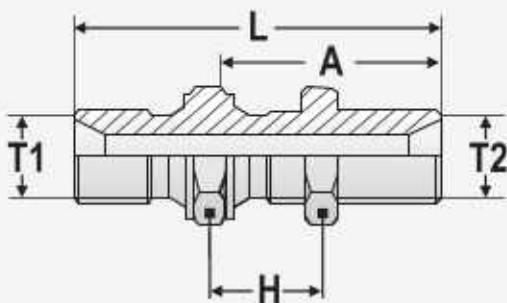
Part No.	T1	T2	A1	A2	L	H
SF MGMG 02 02	1/8"-28	1/8"-28	10	10	25	14
SF MGMG 04 04	1/4"-19	1/4"-19	13.5	13.5	34	19
SF MGMG 06 06	3/8"-19	3/8"-19	14	14	36	22
SF MGMG 08 08	1/2"-14	1/2"-14	16.5	16.5	43	27
SF MGMG 10 10	5/8"-14	5/8"-14	19.5	19.5	51	30
SF MGMG 12 12	3/4"-14	3/4"-14	19.5	19.5	51	32
SF MGMG 16 16	1"-11	1"-11	22.5	22.5	60	41
SF MGMG 20 20	1 1/4"-11	1 1/4"-11	25.5	25.5	68	50
SF MGMG 24 24	1 1/2"-11	1 1/2"-11	25.5	25.5	68	55
SF MGMG 32 32	2"-11	2"-11	28	28	76	70

SFMGMGr: BSP PARALLEL MALE -
BSP PARALLEL MALE

Part No.	T1	T2	A1	A2	L	H
SF MGMG R 04 02	1/4"-19	1/8"-28	13.5	10	30.5	19
SF MGMG R 06 04	3/8"-19	1/4"-19	14	13.5	35.5	22
SF MGMG R 10 04	1/2"-14	1/4"-19	16.5	13.5	40	27
SF MGMG R 10 06	1/2"-14	3/8"-19	16.5	14	40.5	27
SF MGMG R 10 08	5/8"-14	1/2"-14	19.5	16.5	48	30
SF MGMG R 12 06	3/4"-14	3/8"-19	19.5	14	45.5	32
SF MGMG R 12 08	3/4"-14	1/2"-14	19.5	16.5	48	32
SF MGMG R 12 10	3/4"-14	5/8"-14	19.5	19.5	51	32
SF MGMG R 16 08	1"-11	1/2"-14	22.5	16.5	54	41
SF MGMG R 16 12	1"-11	3/4"-14	22.5	19.5	57	41
SF MGMG R 20 12	1 1/4"-11	3/4"-14	25.5	19.5	62	50
SF MGMG R 20 16	1 1/4"-11	1"-11	25.5	22.5	65	50
SF MGMG R 24 12	1 1/2"-11	3/4"-14	25.5	19.5	62	55
SF MGMG R 24 16	1 1/2"-11	1"-11	25.5	22.5	65	55
SF MGMG R 24 20	1 1/2"-11	1 1/4"-11	25.5	25.5	68	55
SF MGMG R 32 20	2"-11	1 1/4"-11	28	25.5	73.5	70
SF MGMG R 32 24	2"-11	1 1/2"-11	28	25.5	73.5	70



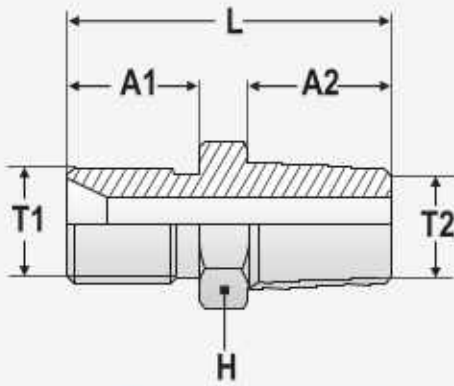
SFMGMGr



SFMGMGB

SFMGMGB : BSP PARALLEL
MALE - BSP PARALLEL MALE (BULKHEAD)

Part No.	T1	T2	A	L	H
SF MGMG B 04 04	1/4"-19	1/4"-19	28	48.5	19
SF MGMG B 06 06	3/8"-19	3/8"-19	32	54	22
SF MGMG B 08 08	1/2"-14	1/2"-14	35	61.5	27
SF MGMG B 10 10	5/8"-14	5/8"-14	35	66.5	30
SF MGMG B 12 12	3/4"-14	3/4"-14	38	69.5	32
SF MGMG B 16 16	1"-11	1"-11	41	78.5	41
SF MGMG B 20 20	1 1/4"-11	1 1/4"-11	44	86.5	50
SF MGMG B 24 24	1 1/2"-11	1 1/2"-11	48	90.5	55
SF MGMG B 32 32	2"-11	2"-11	48	96	70



SFMGMR

SFMGMR : BSP PARALLEL MALE - BSP TAPERED MALE

Part No.	T1	T2	A1	A2	L	H
SF MGMR 02 02	1/8"-28	1/8"-28	10	9	24	14
SF MGMR 04 04	1/4"-19	1/4"-19	13.5	13	33.5	19
SF MGMR 06 06	3/8"-19	3/8"-19	14	13.5	35.5	22
SF MGMR 08 08	1/2"-14	1/2"-14	16.5	17.5	44	27
SF MGMR 12 12	3/4"-14	3/4"-14	19.5	19	50.5	32
SF MGMR 16 16	1"-11	1"-11	22.5	23	60.5	41
SF MGMR 20 20	1 1/4"-11	1 1/4"-11	25.5	24.6	67.1	50
SF MGMR 24 24	1 1/2"-11	1 1/2"-11	25.5	25.4	67.9	55
SF MGMR 32 32	2"-11	2"-11	28	29	77	70

SFMGMN : BSP PARALLEL MALE - NPT MALE

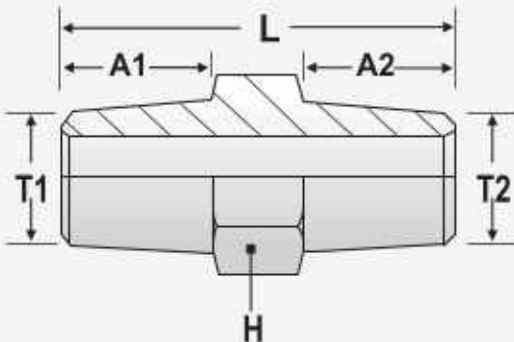
Part No.	T1	T2	A1	A2	L	H
SF MGMN 02 02	1/8"-28	1/8"-27	10	10	25	14
SF MGMN 04 04	1/4"-19	1/4"-18	13.5	14.2	34.7	19
SF MGMN 06 06	3/8"-19	3/8"-18	14	14.2	36.2	22
SF MGMN 08 08	1/2"-14	1/2"-14	16.5	19	45.5	27
SF MGMN 12 12	3/4"-14	3/4"-11.5	19.5	19	50.5	32
SF MGMN 16 16	1"-11	1"-11.5	22.5	24	61.5	41
SF MGMN 20 20	1 1/4"-11	1 1/4"-11.5	25.5	24.6	67.1	50
SF MGMN 24 24	1 1/2"-11	1 1/2"-11.5	25.5	25.4	67.9	55
SF MGMN 32 32	2"-11	2"-11.5	28	26.4	74.4	70



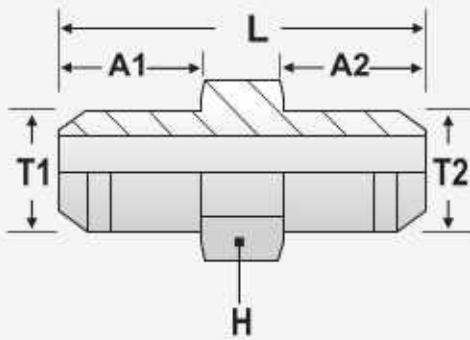
SFMGMN

SFMNMN : NPT MALE - NPT MALE

Part No.	T1	T2	A1	A2	L	H
SF MNMN 02 02	1/8"-27	1/8"-27	10	10	25	12
SF MNMN 04 04	1/4"-18	1/4"-18	14.2	14.2	36.4	16
SF MNMN 06 06	3/8"-18	3/8"-18	14.2	14.2	36.8	19
SF MNMN 08 08	1/2"-14	1/2"-14	19	19	48	22
SF MNMN 12 12	3/4"-11.5	3/4"-11.5	19	19	50	30
SF MNMN 16 16	1"-11.5	1"-11.5	24	24	60	36
SF MNMN 20 20	1 1/4"-11.5	1 1/4"-11.5	24.6	24.6	64.2	46
SF MNMN 24 24	1 1/2"-11.5	1 1/2"-11.5	25.4	25.4	66.6	50
SF MNMN 32 32	2"-11.5	2"-11.5	26.4	26.4	71.8	65



SFMNMN



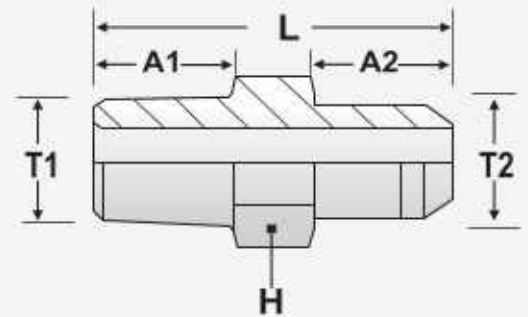
SFMJMJ

SFMJMJ : JIC MALE - JIC MALE

Part No.	T1	T2	A1	A2	L	H
SF MJMJ 07 07	7/16"-20	7/16"-20	14	14	36	16
SF MJMJ 09 09	9/16"-18	9/16"-18	14.1	14.1	36.2	19
SF MJMJ 12 12	3/4"-16	3/4"-16	16.7	16.7	41.4	22
SF MJMJ 17 17	1 1/16"-12	1 1/16"-12	21.9	21.9	55	30
SF MJMJ 21 21	1 5/16"-12	1 5/16"-12	23.1	23.1	57.2	36
SF MJMJ 26 26	1 5/8"-12	1 5/8"-12	24.3	24.3	61.7	46
SF MJMJ 30 30	1 7/8"-12	1 7/8"-12	27.5	27.5	70	50
SF MJMJ 40 40	2 1/2"-12	2 1/2"-12	34	34	86.4	65

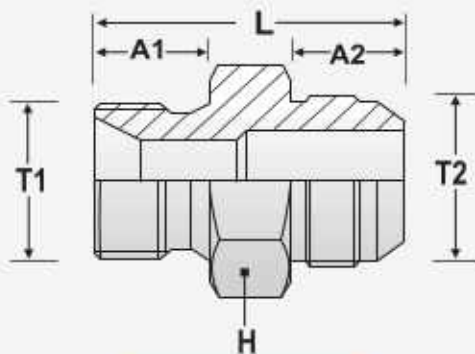
SFMNMJ : NPT MALE - JIC MALE

Part No.	T1	T2	A1	A2	L	H
SF MNMJ 04 07	1/4"-18	7/16"-20	14.2	14	36.2	16
SF MNMJ 04 09	1/4"-18	9/16"-18	14.2	14.1	36.3	19
SF MNMJ 06 9	3/8"-18	9/16"-18	14.2	14.1	36.7	19
SF MNMJ 06 12	3/8"-18	3/4"-16	14.2	16.7	39.3	22
SF MNMJ 08 12	1/2"-14	3/4"-16	19	16.7	45.7	22
SF MNMJ 08 17	1/2"-14	1 1/16"-12	19	21.9	50.9	30
SF MNMJ 12 17	3/4"-11.5	1 1/16"-12	19	21.9	52.9	30
SF MNMJ 16 21	1"-11.5	1 5/16"-12	24	23.1	59.1	36
SF MNMJ 20 21	1 1/4"-11.5	1 5/16"-12	24.6	23.1	62.7	46
SF MNMJ 24 26	1 1/2"-11.5	1 5/8"-12	25.4	24.3	65.5	50
SF MNMJ 24 30	1 1/2"-11.5	1 7/8"-12	25.4	27.5	68.7	50
SF MNMJ 32 40	2"-11.5	2 1/2"-12	26.4	34	79.4	65



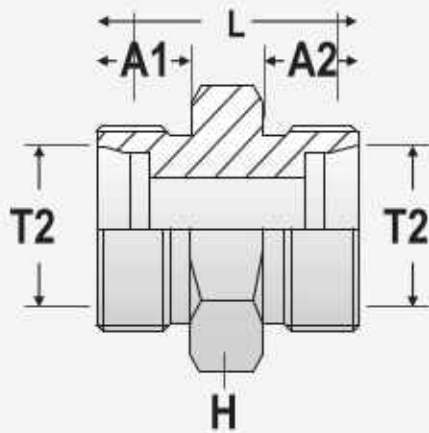
SFMNMJ

SFMGMJ : BSP MALE - JIC MALE



SFMGMJ

Part No.	T1	T2	A1	A2	L	H
SF MGMJ 04 07	1/4"-19	7/16"-20	13.5	14	34.5	19
SF MGMJ 06 09	3/8"-19	9/16"-18	14	14.1	36.1	22
SF MGMJ 08 12	1/2"-14	3/4"-16	16.5	16.7	43.2	27
SF MGMJ 12 17	3/4"-14	1 1/16"-12	19.5	21.9	53.4	32
SF MGMJ 16 21	1"-11	1 5/16"-12	22.5	23.1	60.6	41
SF MGMJ 20 26	1 1/4"-11	1 5/8"-12	25.5	24.3	66.8	50
SF MGMJ 24 30	1 1/2"-11	1 7/8"-12	25.5	27.5	70	55
SF MGMJ 32 40	2"-11	2 1/2"-12	28	34	82	70



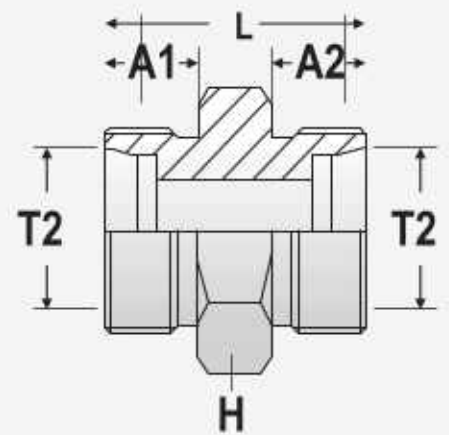
SFCELCCEL

ADAPTOR : METRIC MALE - METRIC MALE
(LIGHT SERIES SF CECEL)

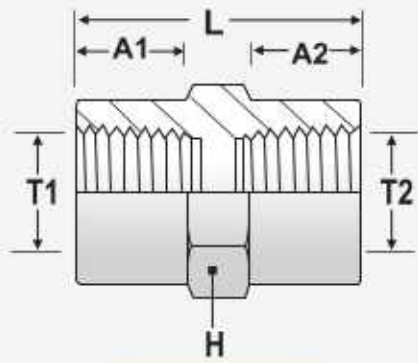
Part No.	T1	T2	A1	A2	L	H
SF CECEL 06 06	M12 x 1.5	M12 x 1.5	10	10	25	12
SF CECEL 08 06	M14 x 1.5	M14 x 1.5	10	10	25	14
SF CECEL 10 10	M16 x 1.5	M16 x 1.5	11	11	27	17
SF CECEL 12 12	M18 x 1.5	M18 x 1.5	11	11	28	19
SF CECEL 15 15	M22 x 1.5	M22 x 1.5	12	12	30	24
SF CECEL 18 18	M26 x 1.5	M26 x 1.5	12	12	31	27
SF CECEL 22 22	M30 x 2	M30 x 2	14	14	35	32
SF CECEL 28 28	M36 x 2	M36 x 2	14	14	36	41
SF CECEL 35 35	M45 x 2	M45 x 2	16	16	41	46
SF CECEL 42 42	M52 x 2	M52 x 2	16	16	43	55

ADAPTOR : METRIC MALE - METRIC MALE
(HEAVY SERIES SF CESCES)

Part No.	T1	T2	A1	A2	L	H
SF CESCES 06 06	M14 x 1.5	M14 x 1.5	12	12	30	14
SF CESCES 08 08	M16 x 1.5	M16 x 1.5	12	12	32	17
SF CESCES 10 10	M18 x 1.5	M18 x 1.5	12	12	32	19
SF CESCES 12 12	M20 x 1.5	M20 x 1.5	12	12	34	22
SF CESCES 14 14	M22 x 1.5	M22 x 1.5	14	14	38	24
SF CESCES 16 16	M24 x 1.5	M24 x 1.5	14	14	38	27
SF CESCES 20 20	M30 x 2	M30 x 2	16	16	44	32
SF CESCES 25 25	M36 x 2	M36 x 2	18	18	50	41
SF CESCES 30 30	M42 x 2	M42 x 2	20	20	54	46
SF CESCES 38 38	M52 x 2	M52 x 2	22	22	61	55



SFCESCES



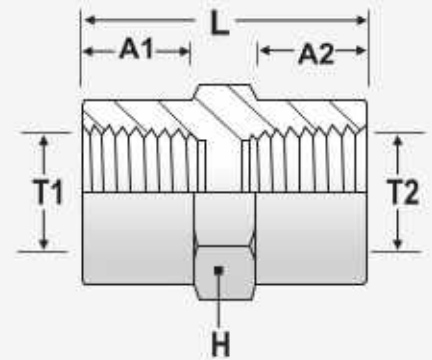
SFFNFN

SFFNFN : NPT FEMALE - NPT FEMALE

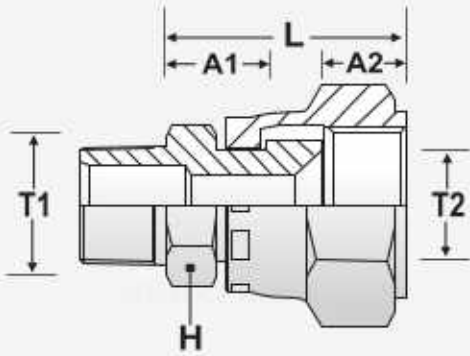
Part No.	T1	T2	A1	A2	L	H
SF FNFN 04 04	1/4"-18	1/4"-18	10.5	10.5	29	19
SF FNFN 06 06	3/8"-18	3/8"-18	10.5	10.5	29	24
SF FNFN 08 08	1/2"-14	1/2"-14	13.5	13.5	38	30
SF FNFN 12 12	3/4"-11.5	3/4"-11.5	13	13	39	36
SF FNFN 16 16	1"-11.5	1"-11.5	17	17	48	41
SF FNFN 20 20	1 1/4"-11.5	1 1/4"-11.5	16.5	16.5	49	50
SF FNFN 24 24	1 1/2"-11.5	1 1/2"-11.5	15.5	15.5	49	60
SF FNFN 32 32	2"-11.5	2"-11.5	16	16	50	75

SFFGFG : BSP FEMALE - BSP FEMALE

Part No.	T1	T2	A1	A2	L	H
SF FGFG 04 04	1/4"-19	1/4"-19	8.7	8.7	26	19
SF FGFG 06 06	3/8"-19	3/8"-19	8	8	26	24
SF FGFG 08 08	1/2"-14	1/2"-14	9.2	9.2	31	30
SF FGFG 12 12	3/4"-14	3/4"-14	11.7	11.7	36	36
SF FGFG 16 16	1"-11	1"-11	14.4	14.4	45	41
SF FGFG 20 20	1 1/4"-11	1 1/4"-11	15.4	15.4	50	55
SF FGFG 24 24	1 1/2"-11	1 1/2"-11	14.5	14.5	53	65
SF FGFG 32 32	2"-11	2"-11	13	13	54	75



SFFGFG



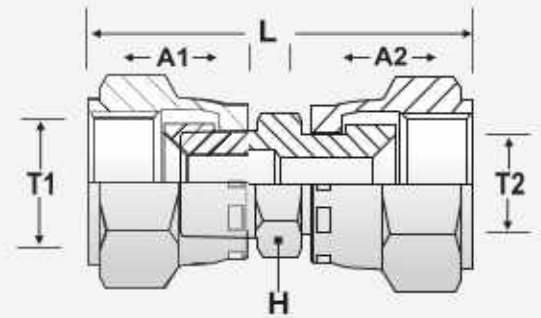
SFMGFSG

SFMGFSG : BSP MALE - BSP FEMALE SWIVEL

Part No.	T1	T2	A1	A2	L	H
SF MGFSG 04 04	1/4"-19	1/4"-19	13.5	12.5	33	19
SF MGFSG 06 06	3/8"-19	3/8"-19	14	15	37	22
SF MGFSG 08 08	1/2"-14	1/2"-14	16.5	15	41.5	27
SF MGFSG 10 10	5/8"-14	5/8"-14	19.5	16	47.5	30
SF MGFSG 12 12	3/4"-14	3/4"-14	19.5	16	47.5	32
SF MGFSG 16 16	1"-11	1"-11	22.5	18	55.5	41
SF MGFSG 20 20	1 1/4"-11	1 1/4"-11	25.5	20.5	63	50
SF MGFSG 24 24	1 1/2"-11	1 1/2"-11	25.5	20	62.5	55
SF MGFSG 32 32	2"-11	2"-11	28	28	76	70

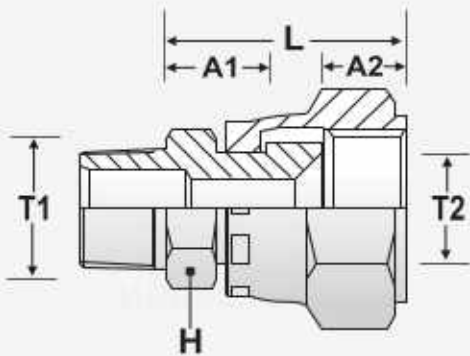
SFMJFSJ : JIC FEMALE - JIC FEMALE

Part No.	T1	T2	A1	A2	L	H
SF MJFSJ 07 07	7/16"-20	7/16"-20	14	10.7	32.7	16
SF MJFSJ 09 09	9/16"-18	9/16"-18	14.1	12.8	34.9	19
SF MJFSJ 12 12	3/4"-16	3/4"-16	16.7	14.5	39.2	22
SF MJFSJ 17 17	1 1/16"-12	1 1/16"-12	21.9	14.6	47.7	30
SF MJFSJ 21 21	1 5/16"-12	1 5/16"-12	23.1	15.1	49.2	36
SF MJFSJ 26 26	1 5/8"-12	1 5/8"-12	24.3	17	54.4	46
SF MJFSJ 30 30	1 7/8"-12	1 7/8"-12	27.5	17	59.5	50
SF MJFSJ 40 40	2 1/2"-12	2 1/2"-12	34	23.7	76.1	65



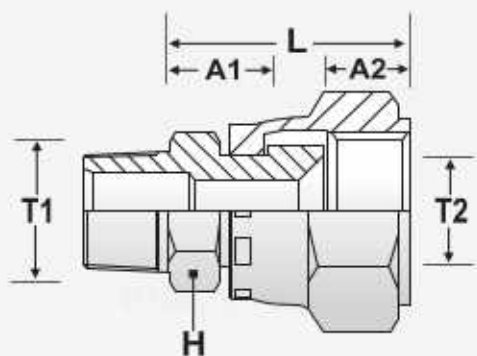
SFMJFSJ

SFMNFSG : NPT MALE -BSP FEMALE SWIVEL



SFMNFSG

Part No.	T1	T2	A1	A2	L	H
SF MNFSG 02 02	1/8"-27	1/8"-28	10	9.5	24.5	12
SF MNFSG 04 04	1/4"-18	1/4"-19	14.2	12.5	34.7	16
SF MNFSG 06 06	3/8"-18	3/8"-19	14.2	15	37.6	19
SF MNFSG 08 08	1/2"-14	1/2"-14	19	15	44	22
SF MNFSG 12 12	3/4"-11.5	3/4"-14	19	16	47	30
SF MNFSG 16 16	1"-11.5	1"-11	24	18	54	36
SF MNFSG 20 20	1 1/4"-11.5	1 1/4"-11	24.6	20.5	60.1	46
SF MNFSG 24 24	1 1/2"-11.5	1 1/2"-11	25.4	20	61.2	50
SF MNFSG 32 32	2"-11.5	2"-11	26.4	28	73.4	65



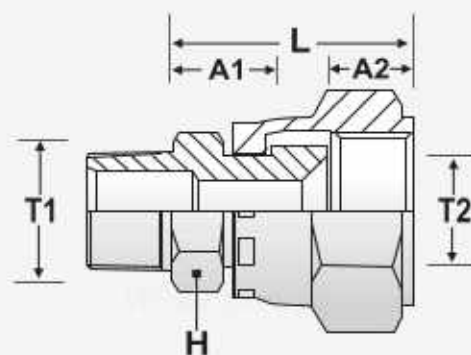
SFMJFSG

ADAPTOR : JIC MALE - BSP
FEMALE SWIVEL

Part No.	T1	T2	A1	A2	L	H
SF MJFSG 04 07	7/16"-20	1/4"-19	14	12.5	34.5	16
SF MJFSG 06 09	9/16"-18	3/8"-19	14.1	15	37.1	19
SF MJFSG 08 12	3/4"-16	1/2"-14	16.7	15	39.7	22
SF MJFSG 12 17	1 1/16"-12	3/4"-14	21.9	16	49.1	30
SF MJFSG 16 21	1 5/16"-12	1"-11	23.1	18	52.1	36
SF MJFSG 20 26	1 5/8"-12	1 1/4"-11	24.3	20.5	57.9	46
SF MJFSG 24 30	1 7/8"-12	1 1/2"-11	27.5	20	62.5	50
SF MJFSG 32 40	2 1/2"-12	2"-11	34	28	80.4	65

SFMGFSJ : BSP MALE - JIC
FEMALE SWIVEL

Part No.	T1	T2	A1	A2	L	H
SF MGFSJ 04 07	1/4"-19	7/16"-20	13.5	10.7	31.2	19
SF MGFSJ 06 09	3/8"-19	9/16"-18	14	12.8	34.8	22
SF MGFSJ 08 12	1/2"-14	3/4"-16	16.5	14.5	41	27
SF MGFSJ 12 17	3/4"-14	1 1/16"-12	19.5	14.6	46.1	32
SF MGFSJ 16 21	1"-11	1 5/16"-12	22.5	15.1	52.6	41
SF MGFSJ 20 26	1 1/4"-11	1 5/8"-12	25.5	17	59.5	50
SF MGFSJ 24 30	1 1/2"-11	1 7/8"-12	25.5	17	59.5	55
SF MGFSJ 32 40	2"-11	2 1/2"-12	28	23.7	71.7	70



SFMGFSJ

TUV NORD

CERTIFICATE

Management system as per
ISO 9001: 2015

In accordance with TÜV NORD procedures, it is hereby certified that:

SUPERIOR HYDROLIQUE PVT. LTD.
Sr. No. 27, Plot No. 52, Burhani Industrial Estate,
Kondhwa Bk., Pune - 411 048,
India

applies a management system in line with the above standard for the following scope:

**Manufacture and Supply of DIN 2353 Fittings L & S Series, Double Ferrules
Tube Fittings, Hose Connectors & Fittings Ball, Needle Bleed Manifold
Valves, Hose Assemblies and Pressure Vessels.**

Certificate Registration No. GM 03 62756
Valid until 24.12.2023
Audit Report No. Q 16489/2020

Certification Body
TUV SDA PVT. LTD.
Issue 25.12.2020
Place: Mumbai

This certification was conducted in accordance with the TÜV NORD auditing and certification procedures & shall be valid subject to regular Surveillance Audits.

TUV India Pvt. Ltd., 8th, Rajaya Plaza - L.L.B.S. Marg, Chhatrapati (W), Mumbai - 400 036, India cert.helpdesk@tuvia.co.in



Notifica della Garanzia di Qualità Totale Notification of the Full Quality Assurance n. ECM PED-H 2020-WT32

Diramata ai sensi della Direttiva 2014/68/UE - Allegato III
Issued according to 2014/68/UE Directive - Annex III

Richiedente

Appliances
Regione Sociale
Company Name
Sede Legale
Registered office
Location of the site productive
Location of production site
Descrizione delle attrezzature
Equipment
Identificazione delle attrezzature
Identification of equipment Assembly

SUPERIOR HYDROLIQUE PVT. LTD.

PLOT NO. 52, BURHANI INDUSTRIAL ESTATE, SK 27/13/4, KONDHWA BK, NEL PACHEDI WENT
PUNE - 411048, MAHARASHTRA, INDIA.

PLOT NO. 52, BURHANI INDUSTRIAL ESTATE, SK 27/13/4, KONDHWA BK, NEL PACHEDI WENT
PUNE - 411048, MAHARASHTRA, INDIA.

Design and manufacture of fittings & hose assembly

Design and manufacture of fittings & hose assembly

Questo certificato è basato sul rapporto di verifica specificato. Questo certificato è basato sul rapporto di verifica specificato nel numero di riferimento ECM PED-H 2020-WT32 emesso il 25/12/2020.

I risultati delle verifiche periodiche del sistema qualità sono parte integrante di questo rapporto. The results of periodic audits of the quality system is an integral part of this notification.

Questo Certificato di Notifica della Garanzia di Qualità Totale è valido fino al 24/12/2023 e può essere ritirato su delle verifiche. Questo Certificato di Notifica della Garanzia di Qualità Totale è valido fino al 24/12/2023 and can be withdrawn if surveillance audits show that the quality system no longer complies with the provisions in Annex III to the Directive.

In accordo con quanto previsto nell'Allegato III, modulo H della Direttiva 2014/68/UE la marcatura CE per prodotti deve essere seguita dal n. 1282 che identifica l'Ente Garante Notificato. In accordance with the Annex III, module H of Directive 2014/68/UE the marking shall be followed by n. 1282 that identifies ECM as notified body responsible for supervising the production.

Esempio di marcatura
Marking example



Data di prima emissione
Date of first issue
12/12/2020

Dilatazione - Extension Rinnovo - Renewal

Valore sigla (EC)
Value of code (EC)
T0100

Data di emissione - Date of issue
22/12/2020

Qualifica - Qualification
25/12/2020

Firma autorizzata
Authorized signature

Assistente Tecnico
(Deputy Manager)

Questo certificato, compresi l'Allegato, può essere riprodotto solo integralmente senza alcuna variazione. Pagina 1 di 8
This certificate, areas included, may only be reproduced in its entirety and without any changes. Page 1 of 8

Ente Certificazione Macchine srl

Via. Car. Bella 243 - Loc. Castello di Formello - 00102 Colonna (RM)
P. +39 0626503141 - F. +39 0615191108 - info@entecertificazionemacchine.it - www.entecertificazionemacchine.it

SUPERIOR

HYDROLIQUE PVT LTD