

SUPERIOR

HYDROLIQUE PVT LTD



INSTRUMENTATION TUBE FITTINGS

CATALOGUE

INDEX

– ABOUT US & QUALITY CERTIFICATION	...02
– UNION & CONNECTOR	...03
– ELBOW & TEE	...20
– STUB TUBE CONNECTOR, AN TUBE & O-RING SEAL	...43
– WELD END, PLUG & CAP, SPARE PART	...61



ABOUT US

Incorporated in the year 2000, SUPERIOR HYDROLIQUE Pvt. Ltd. is one of the leading manufacturers, exporters and suppliers of largest range hydraulic fittings based in Pune - India. We are in this field for the past 21 years and serving this dynamic and complex market's requirement with a wide range of products.

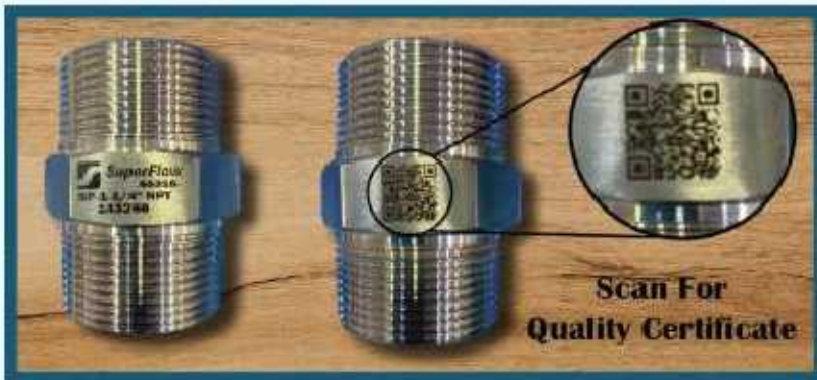
Started with a Hose assembly unit in early 2000 with a 500 sqft. Unit, Our company was successful in starting with the process of design & development of hose fittings & then later on expanded into manufacturing a full range of hydraulic fittings. In the year 2016, We were successful in the addition of a unit for high-pressure vessels & pipe fabrications. Recently, We have also been able to achieve CE Certification for our European Clients.

Our Products are designed & Developed in compliance with the international quality standards & are manufactured from quality components to attain high efficiency. At par service, Technically Fit Assemblies, Affordable prices and topmost technical assistance makes us one of the top contender amongst our competitors. Furthermore, we precisely design all our products keeping in mind clients requirements and prevailing market trends. Tested on several stringent parameters, all our products are featured with longer service life, efficiency, resistance against corrosion and sturdy construction.

With currently over 35000 sqft. Manufacturing unit and 100+ employees, we have achieved a reputable position in the global arena. Superior Hydrolique has now grown to a company supplying its product as an OEM vendor to major companies in and around Maharashtra - India and we attribute our growth to our esteemed customers based in India & Overseas.



QUALITY CERTIFICATION



Considering the importance and need to provide quality hydraulic fittings, especially, in such a competitive market, we have incorporated QR Code scanning system for our every product.

At SUPERIOR HYDROLIQUE Pvt. Ltd. every manufactured hydraulic fitting has a QR code associated with them. It is a faster and easier way to access your product's quality certifications and other documentation. Just by scanning our QR codes on your mobile device, you can view its quality

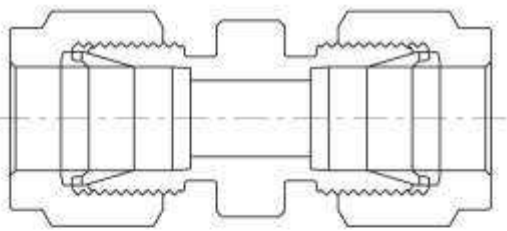
certificate, data-sheets, manuals, hydraulic and electrical schematics and more. There is no mechanism for ensuring the genuineness and quality of such types of fittings supplied from many accredited brands. Many suffer huge losses due to the purchase of low quality fittings. The importance of Quick Response (QR) Coded products helps in overcoming such drawbacks. The QR Codes are one of the easiest ways of providing the information to the customers and other individuals, allowing them to extract the valuable data with just scanning the code with the help of an optical reader.

One of the most significant advantages of QR codes for consumers is the quality assurance. When consumers scan a QR code on a product, it links them to the product's quality certification. This will help the product to pass through all quality control checks easily just through a scan.

QR codes allow us to provide more in-depth information about our products, policies and practices making the processes on customer end much easier. This leads to greater transparency and increased consumer trust on the quality of our

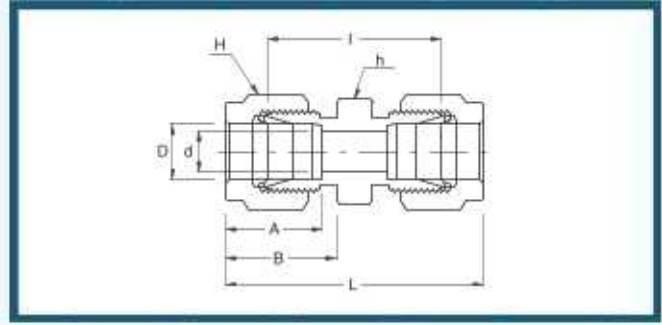
WE USE JAPANESE TECHNOLOGY





UNION & CONNECTOR

SFU - UNION



Connects Fractional Tubes

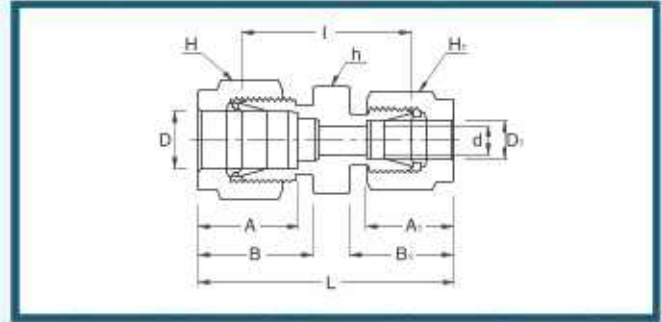
Part No.	Tube O.D. D (inch)	d Min	Width Across Flat		A	B	I	L
			h (inch)	H (inch)				
SFU - 1	1/16	1.27	5/16	5/16	8.63	10.92	17.52	25.15
SFU - 2	1/8	2.28	7/16	7/16	12.70	15.24	22.35	35.56
SFU - 3	3/16	3.04	7/16	1/2	13.71	16.00	24.13	37.33
SFU - 4	1/4	4.82	1/2	9/16	15.24	17.78	26.16	40.89
SFU - 5	5/16	6.35	9/16	5/8	16.25	18.54	28.19	42.92
SFU - 6	3/8	7.11	5/8	11/16	16.76	19.30	30.22	44.95
SFU - 8	1/2	10.41	13/16	7/8	22.86	21.84	30.98	51.30
SFU - 10	5/8	12.70	15/16	1	24.38	21.84	31.75	52.07
SFU - 12	3/4	15.74	1-1/16	1-1/8	24.38	21.84	33.27	53.59
SFU - 14	7/8	18.28	1-3/16	1-1/4	25.90	21.84	34.79	55.11
SFU - 16	1	22.35	1-3/8	1-1/2	31.24	26.41	40.38	64.77
SFU - 20	1-1/4	27.69	1-3/4	1-7/8	41.15	38.86	48.00	92.20
SFU - 24	1-1/2	34.04	2-1/8	2-1/4	50.04	45.21	53.59	107.95
SFU - 32	2	45.97	2-3/4	3	67.56	62.74	74.68	149.35

Connects Metric Tubes

Part No.	Tube O.D. D	d Min	Width Across Flat		A	B	I	L
			h	H				
SFU - 2M	2	1.7	12	12	12.9	15.3	22.4	35.6
SFU - 3M	3	2.4	12	12	12.9	15.3	22.1	35.3
SFU - 4M	4	2.4	12	12	13.7	16.1	24.1	37.3
SFU - 6M	6	4.8	14	14	15.3	17.7	26.2	41.0
SFU - 8M	8	6.4	15	16	16.2	18.6	28.2	43.2
SFU - 10M	10	7.9	18	19	17.2	19.5	31.0	46.2
SFU - 12M	12	9.5	22	22	22.8	22.0	31.0	51.2
SFU - 15M	15	11.9	24	25	24.4	22.0	31.8	52.0
SFU - 16M	16	12.7	24	25	24.4	22.0	31.8	52.0
SFU - 18M	18	15.1	27	30	24.4	22.0	33.3	53.5
SFU - 20M	20	15.9	30	32	26.0	22.0	34.8	55.0
SFU - 22M	22	18.3	30	32	26.0	22.0	34.8	55.0
SFU - 25M	25	21.8	35	38	31.3	26.5	40.4	65.0

* All dimensions in millimeters unless specified as "inch"

SFRU - REDUCING UNION



Connects Fractional Tubes

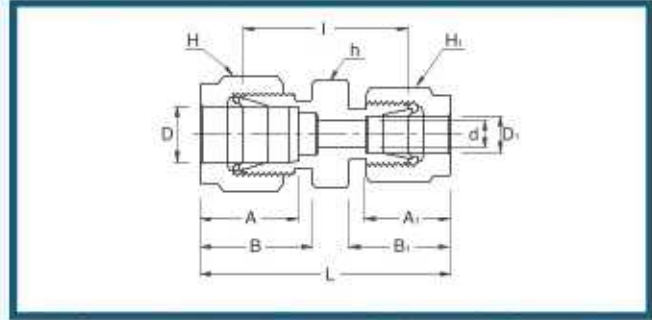
Part No.	Tube O.D.		d Min	Width Across Flat			A	A ₁	B	B ₁	I	L
	D (inch)	D ₁ (inch)		h (inch)	H (inch)	H ₁ (inch)						
SFRU 2 - 1	1.8	1.16	1.27	7/16	7/16	5/16	12.7	8.63	15.24	10.92	20.60	31.00
SFRU 3 - 2	3/16	1.8	2.28	7/16	1.2	7/16	13.71	12.70	16.00	15.24	23.36	36.57
SFRU 4 - 2	1.4	1.8	2.28	1.2	9/16	7/16	15.24	12.70	17.78	15.24	24.63	38.60
SFRU 4 - 3	1.4	3/16	3.04	1.2	9/16	1.2	15.24	13.71	17.78	16.00	25.40	39.37
SFRU 5 - 2	5/16	1.8	2.28	9/16	5.8	7/16	16.25	12.70	18.54	15.24	25.90	39.87
SFRU 5 - 4	5/16	1.4	4.82	9/16	5.8	9/16	16.25	15.24	18.54	17.78	27.43	42.16
SFRU 6 - 2	3/8	1.8	2.28	5/8	11/16	7/16	16.76	12.70	19.30	15.24	26.92	40.89
SFRU 6 - 4	3/8	1.4	4.82	5/8	11/16	9/16	16.76	15.24	19.30	17.78	28.44	43.18
SFRU 6 - 5	3/8	5/16	6.35	5/8	11/16	5/8	16.76	16.25	19.30	18.54	29.46	44.19
SFRU 8 - 2	1.2	1.8	2.28	13/16	7.8	7/16	22.86	12.70	21.84	15.24	28.44	45.21
SFRU 8 - 4	1.2	1.4	4.82	13/16	7.8	9/16	22.86	15.24	21.84	17.78	29.46	46.99
SFRU 8 - 6	1.2	3/8	7.11	13/16	7.8	11/16	22.86	16.76	21.84	19.30	30.98	48.51
SFRU 10 - 6	5/8	3/8	7.11	15/16	1	11/16	24.38	16.76	21.84	19.30	31.75	49.27
SFRU 10 - 8	5/8	1.2	10.41	15/16	1	7/8	24.38	22.86	21.84	21.84	31.75	52.07
SFRU 12 - 4	3/4	1.4	4.82	1-1/16	1-1/8	9/16	24.38	15.24	21.84	17.78	31.75	49.27
SFRU 12 - 6	3/4	3/8	7.11	1-1/16	1-1/8	11/16	24.38	16.76	21.84	19.30	33.27	50.80
SFRU 12 - 8	3/4	1.2	10.41	1-1/16	1-1/8	7/8	24.38	22.86	21.84	21.84	33.27	53.59
SFRU 12 - 10	3/4	5/8	12.70	1-1/16	1-1/8	1	24.38	24.38	21.84	21.84	33.27	53.59
SFRU 16 - 8	1	1.2	10.41	1-3/8	1-1/2	7/8	31.24	22.86	26.41	21.84	39.50	63.24
SFRU 16 - 12	1	3/4	15.74	1-3/8	1-1/2	1-1/8	31.24	24.38	26.41	21.84	39.00	62.73

Connects Metric Tubes

Part No.	Tube O.D.		d Min	Width Across Flat			A	A ₁	B	B ₁	I	L
	D	D ₁		h	H	H ₁						
SFRU 6M- 3M	6	3	2.4	14	14	12	15.3	12.9	17.7	15.3	24.6	38.6
SFRU 6M- 4M	6	4	2.4	14	14	12	15.3	13.7	17.7	16.1	25.4	39.4
SFRU 8M- 6M	8	6	4.8	15	16	14	16.2	15.3	18.6	17.7	27.4	42.3
SFRU 10M- 6M	10	6	4.8	18	19	14	17.2	15.3	19.5	17.7	29.5	44.5
SFRU 10M- 8M	10	8	6.4	18	19	16	17.2	16.2	19.5	18.6	30.0	45.1
SFRU 12M- 6M	12	6	4.8	22	22	14	22.8	15.3	22.0	17.7	29.5	47.0
SFRU 12M- 8M	12	8	6.4	22	22	16	22.8	16.2	22.0	18.6	30.2	47.8
SFRU 12M- 10M	12	10	7.9	22	22	19	22.8	17.2	22.0	19.5	31.0	48.7
SFRU 16M- 12M	16	12	9.5	24	25	22	24.4	22.8	22.0	22.0	31.8	52.0
SFRU 25M- 18M	25	18	15.1	35	38	30	31.3	24.4	26.5	22.0	38.6	61.0
SFRU 25M- 20M	25	20	15.9	35	38	32	31.3	26.0	26.5	22.0	39.9	62.3

* All dimensions in millimeters unless specified as "inch"

SFRU - REDUCING UNION

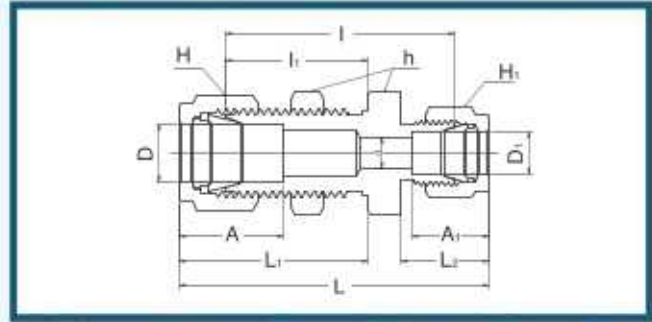


Connects Metric Tubes To Fractional Tubes

Part No.	Tube O.D.		d Min	Width Across Flat			A	A ₁	B	B ₁	I	L
	D	D ₁ (inch)		h	H	H ₁						
SFRU 3M - 2	3	1/8	2.4	12	12	11.1	12.9	12.8	15.3	15.2	22.1	35.2
SFRU 4M - 2	4	1/8	2.4	12	12	11.1	13.7	12.8	16.1	15.2	23.4	36.5
SFRU 4M - 4	4	1/4	2.4	14	12	14.3	13.7	15.3	16.1	17.7	25.4	39.4
SFRU 6M - 2	6	1/8	2.4	14	14	11.1	15.3	12.8	17.7	15.2	24.6	38.5
SFRU 6M - 4	6	1/4	4.8	14	14	14.3	15.3	15.3	17.7	17.7	26.2	41.0
SFRU 6M - 5	6	5/16	4.8	14	14	15.9	15.3	16.2	17.7	18.6	27.4	42.3
SFRU 8M - 4	8	1/4	4.8	15	16	14.3	16.2	15.3	18.6	17.7	27.4	42.3
SFRU 10M - 2	10	1/8	2.4	18	19	11.1	17.2	12.8	19.5	15.2	27.7	41.8
SFRU 10M - 4	10	1/4	4.8	18	19	14.3	17.2	15.3	19.5	17.7	29.5	44.5
SFRU 10M - 5	10	5/16	6.4	18	19	15.9	17.2	16.2	19.5	18.6	30.0	45.1
SFRU 10M - 6	10	3/8	7.1	18	19	17.5	17.2	16.9	19.5	19.2	31.0	45.9
SFRU 12M - 5	12	5/16	6.4	22	22	15.9	22.8	16.2	22.0	18.6	30.2	47.8
SFRU 12M - 6	12	3/8	7.1	22	22	17.5	22.8	16.9	22.0	19.2	31.0	48.4
SFRU 12M - 8	12	1/2	9.5	22	22	22.2	22.8	22.8	22.0	22.0	31.0	51.2
SFRU 15M - 8	15	1/2	10.3	24	25	22.2	24.4	22.8	22.0	22.0	31.8	52.0
SFRU 16M - 10	16	5/8	12.7	24	25	25.4	24.4	24.4	22.0	22.0	31.8	52.0
SFRU 18M - 12	18	3/4	15.1	27	30	28.6	24.4	24.4	22.0	22.0	33.3	53.5
SFRU 20M - 12	20	3/4	15.9	30	32	28.6	26.0	24.4	22.0	22.0	34.8	54.9
SFRU 20M - 16	20	1	15.9	35	32	38.1	26.0	31.2	22.0	26.4	40.4	62.8
SFRU 25M - 16	25	1	21.8	35	38	38.1	31.3	31.3	26.5	26.5	40.4	65.0

* All dimensions in millimeters unless specified as "inch"

SFBHRU - BULKHEAD REDUCING UNION

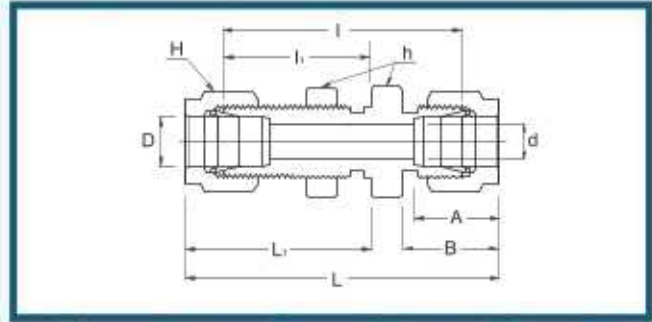


Connects Fractional Tubes

Part No.	Tube O.D.		d Min	Width Across Flat			A	A ₁	I	I ₁	L	L ₁	L ₂	Panel Hole Drill Size	Panel Max. Thickness
	D (inch)	D ₁ (inch)		h (inch)	H (inch)	H ₁ (inch)									
SFBHRU 4 - 2	1/4	1/8	2.28	5/8	9/16	7/16	15.24	12.70	41.14	26.16	55.11	33.52	15.24	11.50	10.16
SFBHRU 6 - 4	3/8	1/4	4.82	3/4	11/16	9/16	16.76	15.24	45.97	29.46	60.70	36.57	17.78	14.68	11.17
SFBHRU 8 - 4	1/2	1/4	4.82	15/16	7/8	9/16	22.86	15.24	49.27	31.75	66.80	41.91	17.78	19.44	12.70

* All dimensions in millimeters unless specified as "inch"

SFBHU - BULKHEAD UNION



Connects Fractional Tubes

Part No.	Tube O.D. D (inch)	d Min	Width Across Flat			A	B	I	I ₁	L	L ₁	Panel Hole Drill Size	Panel Max. Thickness
			h (inch)	H (inch)									
SFBHU - 1	1/16	1.27	5/16	5/16	8.63	10.92	23.87	13.46	31.50	17.27	5.16	3.05	
SFBHU - 2	1/8	2.28	1/2	7/16	12.70	15.24	38.10	24.63	51.30	31.24	8.33	12.70	
SFBHU - 3	3/16	3.04	9/16	1/2	13.71	16.00	40.38	25.40	53.59	32.00	9.92	12.70	
SFBHU - 4	1/4	4.82	5/8	9/16	15.24	17.78	42.92	26.16	57.65	33.52	11.50	10.16	
SFBHU - 5	5/16	6.35	11/16	5/8	16.25	18.54	45.97	28.44	60.70	35.81	13.09	11.17	
SFBHU - 6	3/8	7.11	3/4	11/16	16.76	19.30	47.49	29.46	62.23	36.83	14.68	11.17	
SFBHU - 8	1/2	10.41	15/16	7/8	22.86	21.84	50.80	31.75	71.12	41.91	19.44	12.70	
SFBHU - 10	5/8	12.70	1-1/16	1	24.38	21.84	52.32	32.51	72.64	42.67	22.62	12.70	
SFBHU - 12	3/4	15.74	1-3/16	1-1/8	24.38	21.84	58.67	37.33	78.99	47.49	25.79	16.76	
SFBHU - 14	7/8	18.28	1-3/8	1-1/4	25.90	21.84	64.26	42.92	84.58	53.08	28.97	19.05	
SFBHU - 16	1	22.35	1-5/8	1-1/2	31.24	26.41	71.37	45.21	95.75	57.40	33.73	19.05	

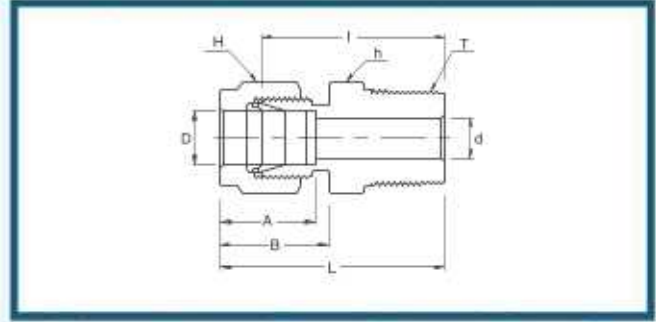
Connects Metric Tubes

Part No.	Tube O.D. D	d Min	Width Across Flat			A	B	I	I ₁	L	L ₁	Panel Hole Drill Size	Panel Max. Thickness
			h	h [*]	H								
SFBHU - 3M	3	2.4	14	12.7	12	12.9	15.3	38.1	24.6	51.3	31.2	8.3	12.7
SFBHU - 4M	4	2.4	14	14.3	12	13.7	16.1	40.4	25.4	53.6	32.0	9.9	12.7
SFBHU - 6M	6	4.8	16	15.9	14	15.3	17.7	42.9	26.2	57.7	33.6	11.5	10.2
SFBHU - 8M	8	6.4	18	17.5	16	16.2	18.6	46.0	28.6	61.0	36.1	13.1	11.2
SFBHU - 10M	10	7.9	22	22.0	19	17.2	19.5	48.5	29.4	63.7	37.0	16.2	11.2
SFBHU - 12M	12	9.5	24	23.8	22	22.8	22.0	50.8	31.8	71.0	41.9	19.5	12.7
SFBHU - 15M	15	11.9	27	27.0	25	24.4	22.0	52.3	32.5	72.5	42.6	22.8	12.7
SFBHU - 16M	16	12.7	27	27.0	25	24.4	22.0	52.3	32.5	72.5	42.6	22.8	12.7
SFBHU - 18M	18	15.1	30	30.0	30	24.4	22.0	58.7	37.3	78.9	47.4	26.0	16.8
SFBHU - 20M	20	15.9	35	35.0	32	26.0	22.0	64.3	42.9	84.5	53.0	29.0	17.0
SFBHU - 22M	22	18.3	35	35.0	32	26.0	22.0	64.3	42.9	84.5	53.0	29.0	19.1
SFBHU - 25M	25	21.8	41.3	41.3	38	31.3	26.5	71.4	45.2	95.9	57.5	33.7	19.1

h1* : Metric Tubes Bulkhead Hexagon application only

* All dimensions in millimeters unless specified as "inch"

SFMC - MALE CONNECTOR

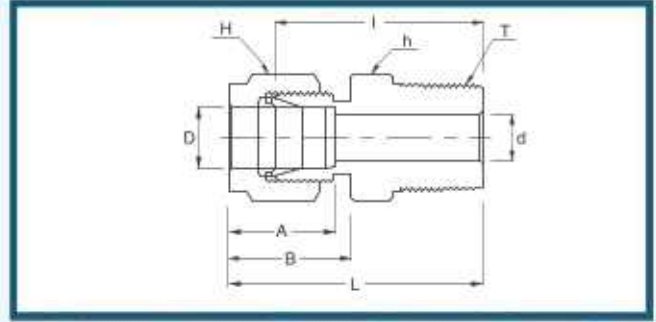


Connects Fractional Tubes To Female NPT Thread

Part No.	Tube O.D. D (inch)	T (NPT)	d Min	Width Across Flat		A	B	I	L
				h (inch)	H (inch)				
SFMC 1 - 1N	1.16	1/16	1.27	5/16	5/16	8.63	10.92	20.00	23.83
SFMC 1 - 2N	1.16	1/8	1.27	7/16	7/16	8.63	10.92	22.35	26.23
SFMC 2 - 2N	1.8	1/8	2.28	7/16	7/16	12.70	15.24	23.87	30.48
SFMC 2 - 4N	1.8	1/4	2.28	9/16	7/16	12.70	15.24	28.95	35.56
SFMC 2 - 6N	1.8	3/8	2.28	11/16	7/16	12.70	15.24	29.21	35.81
SFMC 2 - 8N	1.8	1/2	2.28	7/8	7/16	12.70	15.24	35.56	42.16
SFMC 3 - 2N	3.16	1/8	3.04	7/16	1.2	13.71	16.00	24.63	31.24
SFMC 3 - 4N	3.16	1/4	3.04	9/16	1.2	13.71	16.00	29.71	36.32
SFMC 4 - 2N	1.4	1/8	4.82	1/2	9/16	15.24	17.78	25.40	32.76
SFMC 4 - 4N	1.4	1/4	4.82	9/16	9/16	15.24	17.78	30.48	37.84
SFMC 4 - 6N	1.4	3/8	4.82	11/16	9/16	15.24	17.78	30.98	38.35
SFMC 4 - 8N	1.4	1/2	4.82	7/8	9/16	15.24	17.78	37.33	44.70
SFMC 4 - 12N	1.4	3/4	4.82	1-1/16	9/16	15.24	17.78	38.86	46.22
SFMC 5 - 2N	5.16	1/8	4.82	9/16	5.8	16.25	18.54	26.67	34.03
SFMC 5 - 4N	5.16	1/4	6.35	9/16	5.8	16.25	18.54	31.24	38.60
SFMC 5 - 6N	5.16	3/8	6.35	11/16	5.8	16.25	18.54	31.75	39.11
SFMC 6 - 2N	3.8	1/8	4.82	5/8	11.16	16.76	19.30	27.94	35.30
SFMC 6 - 4N	3.8	1/4	7.11	5/8	11.16	16.76	19.30	32.51	39.87
SFMC 6 - 6N	3.8	3/8	7.11	11/16	11.16	16.76	19.30	32.51	39.87
SFMC 6 - 8N	3.8	1/2	7.11	7/8	11.16	16.76	19.30	38.86	46.22
SFMC 6 - 12N	3.8	3/4	7.11	1-1/16	11.16	16.76	19.30	40.38	47.75
SFMC 8 - 2N	1.2	1/8	4.82	13/16	7.8	22.86	21.84	28.70	38.86
SFMC 8 - 4N	1.2	1/4	7.11	13/16	7.8	22.86	21.84	33.27	43.43
SFMC 8 - 6N	1.2	3/8	9.65	13/16	7.8	22.86	21.84	33.27	43.43
SFMC 8 - 8N	1.2	1/2	10.41	7/8	7.8	22.86	21.84	38.86	49.02
SFMC 8 - 12N	1.2	3/4	10.41	1-1/16	7.8	22.86	21.84	40.38	50.54
SFMC 8 - 16N	1.2	1	10.41	1-3/8	7.8	22.86	21.84	46.99	57.15
SFMC 10 - 6N	5.8	3/8	9.65	15/16	1	24.38	21.84	34.03	44.19
SFMC 10 - 8N	5.8	1/2	11.93	15/16	1	24.38	21.84	38.86	49.02
SFMC 10 - 12N	5.8	3/4	12.70	1-1/16	1	24.38	21.84	40.38	50.54
SFMC 12 - 8N	3.4	1/2	11.93	1-1/16	1-1/8	24.38	21.84	40.38	50.54
SFMC 12 - 12N	3.4	3/4	15.74	1-1/16	1-1/8	24.38	21.84	40.38	50.54
SFMC 12 - 16N	3.4	1	15.74	1-3/8	1-1/8	24.38	21.84	46.99	57.15
SFMC 14 - 12N	7.8	3/4	15.74	1-3/16	1-1/4	25.90	21.84	40.38	50.54
SFMC 14 - 16N	7.8	1	18.28	1-3/8	1-1/4	25.90	21.84	46.99	57.15
SFMC 16 - 8N	1	1/2	11.93	1-3/8	1-1/2	31.24	26.41	45.21	57.40
SFMC 16 - 12N	1	3/4	15.74	1-3/8	1-1/2	31.24	26.41	45.21	57.40
SFMC 16 - 16N	1	1	22.35	1-3/8	1-1/2	31.24	26.41	50.03	62.23
SFMC 20 - 16N	1-1/4	1	22.35	1-3/4	1-7/8	41.15	38.86	55.12	77.22
SFMC 20 - 20N	1-1/4	1-1/4	27.69	1-3/4	1-7/8	41.15	38.86	55.12	77.22
SFMC 24 - 24N	1-1/2	1-1/2	34.04	2-1/8	2-1/4	50.04	45.21	61.72	88.90
SFMC 32 - 32N	2	2	45.97	2-3/4	3	67.56	62.74	76.20	113.54

* All dimensions in millimeters unless specified as "inch"

SFMC - MALE CONNECTOR

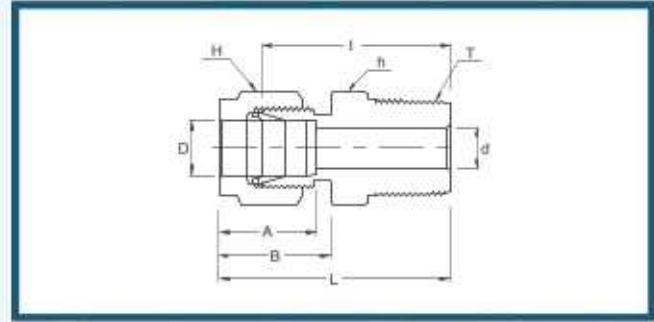


Connects Fractional Tube To Female ISO Tapered Thread

Part No.	Tube O.D. D (inch)	T R (PT)	d Min	Width Across Flat		A	B	I	L
				h (inch)	H (inch)				
SFMC 2 - 2R	1/8	1/8	2.28	7/16	7/16	12.70	15.24	23.87	30.48
SFMC 2 - 4R	1/8	1/4	2.28	9/16	7/16	12.70	15.24	28.95	35.56
SFMC 4 - 2R	1/4	1/8	4.82	1-2	9/16	15.24	17.78	25.40	32.76
SFMC 4 - 4R	1/4	1/4	4.82	9/16	9/16	15.24	17.78	30.48	37.84
SFMC 4 - 6R	1/4	3/8	4.82	11/16	9/16	15.24	17.78	30.98	38.35
SFMC 4 - 8R	1/4	1/2	4.82	7-8	9/16	15.24	17.78	37.33	44.70
SFMC 5 - 2R	5/16	1/8	4.82	9/16	5-8	16.25	18.54	26.67	34.03
SFMC 5 - 4R	5/16	1/4	6.35	9/16	5-8	16.25	18.54	31.24	38.60
SFMC 6 - 2R	3/8	1/8	4.82	5-8	11-16	16.76	19.30	27.94	35.30
SFMC 6 - 4R	3/8	1/4	7.11	5-8	11-16	16.76	19.30	32.51	39.87
SFMC 6 - 6R	3/8	3/8	7.11	11-16	11-16	16.76	19.30	32.51	39.87
SFMC 6 - 8R	3/8	1/2	7.11	7-8	11-16	16.76	19.30	38.86	46.22
SFMC 8 - 4R	1/2	1/4	7.11	13-16	7-8	22.86	21.84	33.27	43.43
SFMC 8 - 6R	1/2	3/8	9.65	13-16	7-8	22.86	21.84	33.27	43.43
SFMC 8 - 8R	1/2	1/2	10.41	7-8	7-8	22.86	21.84	38.86	49.02
SFMC 8 - 12R	1/2	3/4	10.41	1-1/16	7-8	22.86	21.84	40.38	50.54
SFMC 12 - 12R	3/4	3/4	15.74	1-1/16	1-1/8	24.38	21.84	40.38	50.54
SFMC 16 - 16R	1	1	22.35	1-3/8	1-1/2	31.24	26.41	50.03	62.23

* All dimensions in millimeters unless specified as "inch"

SFMC - MALE CONNECTOR

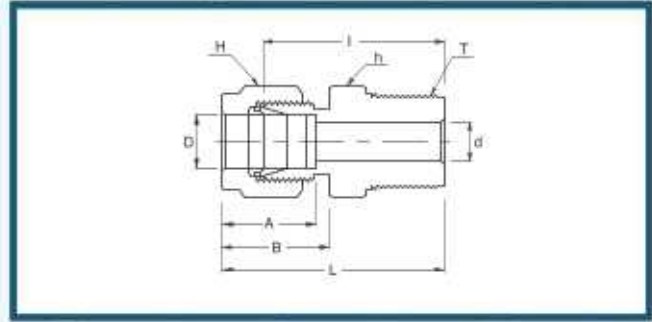


Connects Metric Tube To Female NPT Thread

Part No.	Tube O.D. D	T (NPT)	d Min	Width Across Flat		A	B	I	L
				h	H				
SFMC 2M - 2N	2	1.8	1.7	12	12	12.9	15.3	23.9	30.5
SFMC 3M - 2N	3	1.8	2.4	12	12	12.9	15.3	23.9	30.5
SFMC 3M - 4N	3	1.4	2.4	14	12	12.9	15.3	29.0	35.6
SFMC 4M - 2N	4	1.8	2.4	12	12	13.7	16.1	24.6	31.2
SFMC 4M - 4N	4	1.4	2.4	14	12	13.7	16.1	29.7	36.3
SFMC 6M - 2N	6	1.8	4.8	14	14	15.3	17.7	25.4	32.8
SFMC 6M - 4N	6	1.4	4.8	14	14	15.3	17.7	30.5	37.9
SFMC 6M - 6N	6	3.8	4.8	18	14	15.3	17.7	31.0	38.4
SFMC 6M - 8N	6	1.2	4.8	22	14	15.3	17.7	37.3	44.7
SFMC 8M - 2N	8	1.8	4.8	15	16	16.2	18.6	26.7	34.2
SFMC 8M - 4N	8	1.4	6.4	15	16	16.2	18.6	31.2	38.7
SFMC 8M - 6N	8	3.8	6.4	18	16	16.2	18.6	31.8	39.3
SFMC 8M - 8N	8	1.2	6.4	22	16	16.2	18.6	38.1	45.6
SFMC 10M - 2N	10	1.8	4.8	18	19	17.2	19.5	28.7	36.3
SFMC 10M - 4N	10	1.4	7.9	18	19	17.2	19.5	33.3	40.9
SFMC 10M - 6N	10	3.8	7.9	18	19	17.2	19.5	33.3	40.9
SFMC 10M - 8N	10	1.2	7.9	22	19	17.2	19.5	38.9	46.5
SFMC 12M - 2N	12	1.8	4.8	22	22	22.8	22.0	28.7	38.8
SFMC 12M - 4N	12	1.4	7.1	22	22	22.8	22.0	33.3	43.4
SFMC 12M - 6N	12	3.8	9.5	22	22	22.8	22.0	33.3	43.4
SFMC 12M - 8N	12	1.2	9.5	22	22	22.8	22.0	38.9	49.0
SFMC 12M - 12N	12	3.4	9.5	27	22	22.8	22.0	40.4	50.5
SFMC 14M - 4N	14	1.4	7.1	24	25	24.4	22.0	34.0	44.1
SFMC 14M - 6N	14	3.8	9.5	24	25	24.4	22.0	34.0	44.1
SFMC 14M - 8N	14	1.2	11.1	24	25	24.4	22.0	38.9	49.0
SFMC 16M - 6N	16	3.8	9.5	24	25	24.4	22.0	34.0	44.1
SFMC 16M - 8N	16	1.2	11.9	24	25	24.4	22.0	38.9	49.0
SFMC 16M - 12N	16	3.4	12.7	27	25	24.4	22.0	40.4	50.5
SFMC 18M - 8N	18	1.2	11.9	27	30	24.4	22.0	40.4	50.5
SFMC 18M - 12N	18	3.4	15.1	27	30	24.4	22.0	40.4	50.5
SFMC 20M - 8N	20	1.2	11.9	30	32	26.0	22.0	42.2	52.3
SFMC 20M - 12N	20	3.4	15.9	30	32	26.0	22.0	42.2	52.3
SFMC 22M - 12N	22	3.4	15.9	30	32	26.0	22.0	42.2	52.3
SFMC 22M - 16N	22	1	18.3	35	32	26.0	22.0	47.0	57.1
SFMC 25M - 12N	25	3.4	15.9	35	38	31.3	26.5	45.2	57.5
SFMC 25M - 16N	25	1	21.8	35	38	31.3	26.5	50.0	62.3
SFMC 28M - 16N	28	1	21.8	41	46	36.6	36.6	51.6	72.4
SFMC 28M - 20N	28	1-1/4	21.8	46	46	36.6	36.6	52.3	73.1
SFMC 30M - 20N	30	1-1/4	26.2	46	50	39.6	39.2	55.6	77.2
SFMC 32M - 20N	32	1-1/4	28.6	46	50	42.0	41.6	56.6	79.6
SFMC 38M - 24N	38	1-1/2	33.7	55	60	49.4	47.9	64.0	91.6

* All dimensions in millimeters unless specified as "inch"

SFMC - MALE CONNECTOR

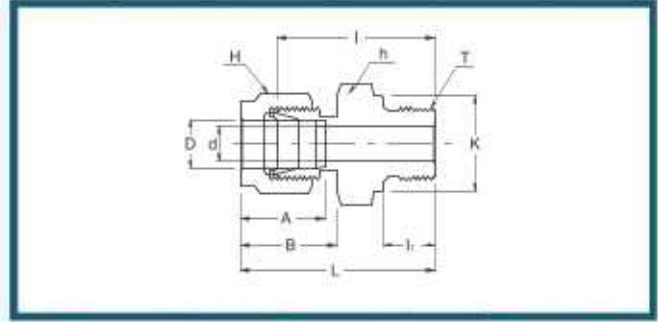


Connects Metric Tube To Female ISO Tapered Thread

Part No.	Tube O.D. D	T R (PT)	d Min	Width Across Flat		A	B	I	L
				h	H				
SFMC 2M - 2R	2	1.8	1.7	12	12	12.9	15.3	23.9	30.5
SFMC 3M - 2R	3	1.8	2.4	12	12	12.9	15.3	23.9	30.5
SFMC 3M - 4R	3	1.4	2.4	14	12	12.9	15.3	29.0	35.6
SFMC 4M - 2R	4	1.8	2.4	12	12	13.7	16.1	24.6	31.2
SFMC 4M - 4R	4	1.4	2.4	14	12	13.7	16.1	29.7	36.3
SFMC 6M - 2R	6	1.8	4.8	14	14	15.3	17.7	25.4	32.8
SFMC 6M - 4R	6	1.4	4.8	14	14	15.3	17.7	30.5	37.9
SFMC 6M - 6R	6	3.8	4.8	18	14	15.3	17.7	31.0	38.4
SFMC 6M - 8R	6	1.2	4.8	22	14	15.3	17.7	37.3	44.7
SFMC 8M - 2R	8	1.8	4.8	15	16	16.2	18.6	26.7	34.2
SFMC 8M - 4R	8	1.4	6.4	15	16	16.2	18.6	31.2	38.7
SFMC 8M - 6R	8	3.8	6.4	18	16	16.2	18.6	31.8	39.3
SFMC 8M - 8R	8	1.2	6.4	22	16	16.2	18.6	38.1	45.6
SFMC 10M - 2R	10	1.8	4.8	18	19	17.2	19.5	28.7	36.3
SFMC 10M - 4R	10	1.4	7.9	18	19	17.2	19.5	33.3	40.9
SFMC 10M - 6R	10	3.8	7.9	18	19	17.2	19.5	33.3	40.9
SFMC 10M - 8R	10	1.2	7.9	22	19	17.2	19.5	38.9	46.5
SFMC 12M - 4R	12	1.4	7.1	22	22	22.8	22.0	33.3	43.4
SFMC 12M - 6R	12	3.8	9.5	22	22	22.8	22.0	33.3	43.4
SFMC 12M - 8R	12	1.2	9.5	22	22	22.8	22.0	38.9	49.0
SFMC 12M - 12R	12	3.4	9.5	27	22	22.8	22.0	40.4	50.5
SFMC 15M - 8R	15	1.2	11.9	24	25	24.4	22.0	38.9	49.0
SFMC 16M - 4R	16	1.4	7.1	24	25	24.4	22.0	34.0	44.1
SFMC 16M - 6R	16	3.8	9.5	24	25	24.4	22.0	34.0	44.1
SFMC 16M - 8R	16	1.2	11.9	24	25	24.4	22.0	38.9	49.0
SFMC 16M - 12R	16	3.4	12.7	27	25	24.4	22.0	40.4	50.5
SFMC 18M - 8R	18	1.2	11.9	27	30	24.4	22.0	40.4	50.5
SFMC 18M - 12R	18	3.4	15.1	27	30	24.4	22.0	40.4	50.5
SFMC 20M - 8R	20	1.2	11.9	30	32	26.0	22.0	42.2	52.3
SFMC 20M - 12R	20	3.4	15.9	30	32	26.0	22.0	42.2	52.3
SFMC 22M - 12R	22	3.4	15.9	30	32	26.0	22.0	42.2	52.3
SFMC 22M - 16R	22	1	18.3	35	32	26.0	22.0	47.0	57.1
SFMC 25M - 12R	25	3.4	15.9	35	38	31.3	26.5	45.2	57.5
SFMC 25M - 16R	25	1	21.8	35	38	31.3	26.5	50.0	62.3
SFMC 28M - 16R	28	1	21.8	41	46	36.6	36.6	51.6	72.4
SFMC 28M - 20R	28	1-1/4	21.8	46	46	36.6	36.6	52.3	73.1
SFMC 30M - 20R	30	1-1/4	26.2	46	50	39.6	39.2	55.6	77.2
SFMC 32M - 20R	32	1-1/4	28.6	46	50	42.0	41.6	56.6	79.6
SFMC 38M - 24R	38	1-1/2	33.7	55	60	49.4	47.9	64.0	91.6

* All dimensions in millimeters unless specified as "inch"

SFGMC - MALE CONNECTOR FOR BONDED WASHER SEAL

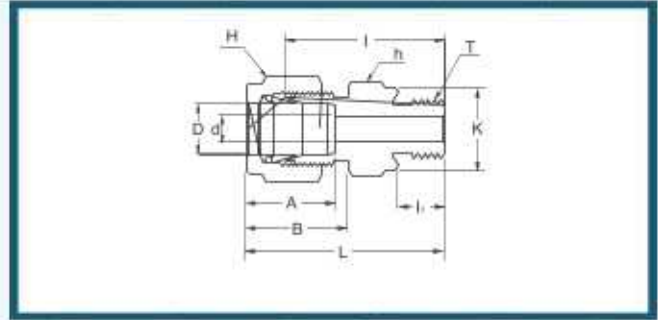


Connects Metric Tubes To Female ISO Parallel Thread

Part No.	Tube O.D. D	T G (PF)	d Min	Width Across Flat		A	B	I	I ₁	L	K
				h	H						
SFGMC 3M - 2G	3	1,8	2.4	14	12	12.9	15.3	23.4	7.1	30.0	13.8
SFGMC 3M - 4G	3	1,4	2.4	19	12	12.9	15.3	28.7	11.2	35.3	18.0
SFGMC 4M - 2G	4	1,8	2.4	14	12	13.7	16.1	24.1	7.1	30.7	13.8
SFGMC 6M - 2G	6	1,8	4.0	14	14	15.3	17.7	24.9	7.1	32.3	13.8
SFGMC 6M - 4G	6	1,4	4.8	19	14	15.3	17.7	30.2	11.2	37.6	18.0
SFGMC 6M - 6G	6	3,8	4.8	22	14	15.3	17.7	31.5	11.2	38.9	21.8
SFGMC 6M - 8G	6	1,2	4.8	27	14	15.3	17.7	37.3	14.2	44.7	26.0
SFGMC 8M - 2G	8	1,8	4.0	15	16	16.2	18.6	25.7	7.1	33.2	13.8
SFGMC 8M - 4G	8	1,4	6.4	19	16	16.2	18.6	31.0	11.2	38.5	18.0
SFGMC 8M - 6G	8	3,8	6.4	22	16	16.2	18.6	32.3	11.2	39.8	21.8
SFGMC 8M - 8G	8	1,2	6.4	27	16	16.2	18.6	38.1	14.2	45.6	26.0
SFGMC 10M - 4G	10	1,4	5.9	19	19	17.2	19.5	31.8	11.2	39.4	18.0
SFGMC 10M - 6G	10	3,8	7.9	22	19	17.2	19.5	33.0	11.2	40.6	21.8
SFGMC 10M - 8G	10	1,2	7.9	27	19	17.2	19.5	38.9	14.2	46.5	26.0
SFGMC 12M - 4G	12	1,4	5.9	22	22	22.8	22.0	32.5	11.2	42.6	18.0
SFGMC 12M - 6G	12	3,8	7.9	22	22	22.8	22.0	33.0	11.2	43.1	21.8
SFGMC 12M - 8G	12	1,2	9.5	27	22	22.8	22.0	38.9	14.2	49.0	26.0
SFGMC 12M - 12G	12	3,4	9.5	35	22	22.8	22.0	42.7	15.7	52.8	32.0
SFGMC 16M - 6G	16	3,8	7.9	24	25	24.4	22.0	33.8	11.2	43.9	21.8
SFGMC 16M - 8G	16	1,2	11.9	27	25	24.4	22.0	38.9	14.2	49.0	26.0
SFGMC 18M - 8G	18	1,2	11.9	27	30	24.4	22.0	38.9	14.2	49.0	26.0
SFGMC 18M - 12G	18	3,4	15.1	35	30	24.4	22.0	42.7	15.7	52.8	32.0
SFGMC 20M - 8G	20	1,2	11.9	30	32	26.0	22.0	40.4	14.2	50.5	26.0
SFGMC 20M - 12G	20	3,4	15.9	35	32	26.0	22.0	42.7	15.7	52.8	32.0
SFGMC 22M - 12G	22	3,4	15.9	35	32	26.0	22.0	42.7	15.7	52.8	32.0
SFGMC 22M - 16G	22	1	18.3	41	32	26.0	22.0	45.2	18.3	55.3	39.0
SFGMC 25M - 12G	25	3,4	15.9	35	38	31.3	26.5	45.2	15.7	57.5	32.0
SFGMC 25M - 16G	25	1	19.8	41	38	31.3	26.5	47.8	18.3	60.1	39.0

* All dimensions in millimeters unless specified as "inch"

SFOMC - MALE CONNECTOR FOR METAL GASKET SEAL

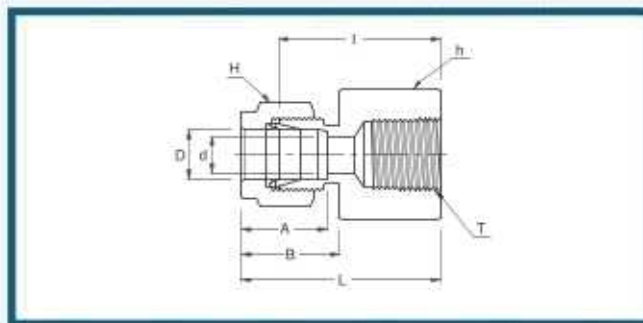


Connects Metric Tube To Female ISO Parallel Thread

Part No.	Tube O.D. D	T G (PF)	d Min	Width Across Flat		A	B	I	Ii	L	K
				h	H						
SFOMC 3M - 2G	3	1.8	2.4	14	12	12.9	15.3	23.4	7.1	30.0	13.8
SFOMC 3M - 4G	3	1.4	2.4	19	12	12.9	15.3	28.7	11.2	35.3	18.0
SFOMC 4M - 2G	4	1.8	2.4	14	12	13.7	16.1	24.1	7.1	30.7	13.8
SFOMC 6M - 2G	6	1.8	4.0	14	14	15.3	17.7	24.9	7.1	32.3	13.8
SFOMC 6M - 4G	6	1.4	4.8	19	14	15.3	17.7	30.2	11.2	37.6	18.0
SFOMC 6M - 6G	6	3.8	4.8	22	14	15.3	17.7	31.5	11.2	38.9	21.8
SFOMC 6M - 8G	6	1.2	4.8	27	14	15.3	17.7	37.3	14.2	44.7	26.0
SFOMC 8M - 2G	8	1.8	4.0	15	16	16.2	18.6	25.7	7.1	33.2	13.8
SFOMC 8M - 4G	8	1.4	6.4	19	16	16.2	18.6	31.0	11.2	38.5	18.0
SFOMC 8M - 6G	8	3.8	6.4	22	16	16.2	18.6	32.3	11.2	39.8	21.8
SFOMC 8M - 8G	8	1.2	6.4	27	16	16.2	18.6	38.1	14.2	45.6	26.0
SFOMC 10M - 4G	10	1.4	5.9	19	19	17.2	19.5	31.8	11.2	39.4	18.0
SFOMC 10M - 6G	10	3.8	7.9	22	19	17.2	19.5	33.0	11.2	40.6	21.8
SFOMC 10M - 8G	10	1.2	7.9	27	19	17.2	19.5	38.9	14.2	46.5	26.0
SFOMC 12M - 4G	12	1.4	5.9	22	22	22.8	22.0	32.5	11.2	42.6	18.0
SFOMC 12M - 6G	12	3.8	7.9	22	22	22.8	22.0	33.0	11.2	43.1	21.8
SFOMC 12M - 8G	12	1.2	9.5	27	22	22.8	22.0	38.9	14.2	49.0	26.0
SFOMC 12M - 12G	12	3.4	9.5	35	22	22.8	22.0	42.7	15.7	52.8	32.0
SFOMC 15M - 8G	15	1.2	11.9	27	25	24.4	22.0	38.9	14.2	49.0	26.0
SFOMC 16M - 6G	16	3.8	7.9	24	25	24.4	22.0	33.8	11.2	43.9	21.8
SFOMC 16M - 8G	16	1.2	11.9	27	25	24.4	22.0	38.9	14.2	49.0	26.0
SFOMC 18M - 8G	18	1.2	11.9	27	30	24.4	22.0	38.9	14.2	49.0	26.0
SFOMC 18M - 12G	18	3.4	15.1	35	30	24.4	22.0	42.7	15.7	52.8	32.0
SFOMC 20M - 8G	20	1.2	11.9	30	32	26.0	22.0	40.4	14.2	50.5	26.0
SFOMC 20M - 12G	20	3.4	15.9	35	32	26.0	22.0	42.7	15.7	52.8	32.0
SFOMC 22M - 12G	22	3.4	15.9	35	32	26.0	22.0	42.7	15.7	52.8	32.0
SFOMC 22M - 16G	22	1	18.3	41	32	26.0	22.0	45.2	18.3	55.3	39.0
SFOMC 25M - 12G	25	3.4	15.9	35	38	31.3	26.5	45.2	15.7	57.5	32.0
SFOMC 25M - 16G	25	1	19.8	41	38	31.3	26.5	47.8	18.3	60.1	39.0

* All dimensions in millimeters unless specified as "inch"

SFFC - FEMALE CONNECTOR



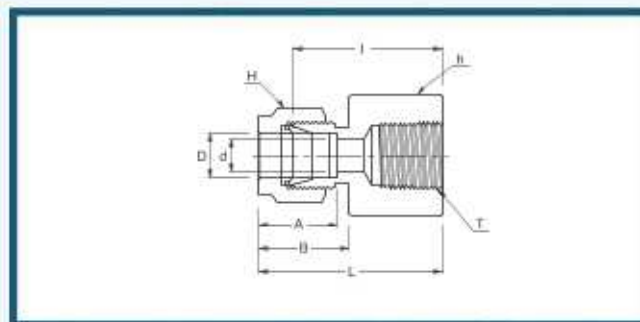
Connects Fractional Tubes To Male NPT Thread

Part No.	Tube O.D. D (inch)	T* (NPT)	d Min	Width Across Flat		A	B	I	L
				h (inch)	H (inch)				
SFFC 2 - 2N	1/8	1/8	2.28	9/16	7/16	12.70	15.24	22.09	28.70
SFFC 2 - 4N	1/8	1/4	2.28	3/4	7/16	12.70	15.24	26.92	33.52
SFFC 3 - 2N	3/16	1/8	3.04	9/16	1/2	13.71	16.00	23.11	29.71
SFFC 4 - 2N	1/4	1/8	4.82	9/16	9/16	15.24	17.78	23.87	31.24
SFFC 4 - 4N	1/4	1/4	4.82	3/4	9/16	15.24	17.78	28.44	35.81
SFFC 4 - 6N	1/4	3/8	4.82	7/8	9/16	15.24	17.78	30.22	37.59
SFFC 4 - 8N	1/4	1/2	4.82	1-1/16	9/16	15.24	17.78	35.05	42.41
SFFC 5 - 2N	5/16	1/8	6.35	9/16	5/8	16.25	18.54	24.63	32.00
SFFC 5 - 4N	5/16	1/4	6.35	3/4	5/8	16.25	18.54	29.46	36.83
SFFC 6 - 2N	3/8	1/8	7.11	5/8	11/16	16.76	19.30	25.40	32.76
SFFC 6 - 4N	3/8	1/4	7.11	3/4	11/16	16.76	19.30	30.22	37.59
SFFC 6 - 6N	3/8	3/8	7.11	7/8	11/16	16.76	19.30	31.75	39.11
SFFC 6 - 8N	3/8	1/2	7.11	1-1/16	11/16	16.76	19.30	36.57	43.94
SFFC 6 - 12N	3/8	3/4	7.11	1-5/16	11/16	16.76	19.30	40.38	47.75
SFFC 8 - 4N	1/2	1/4	10.41	13/16	7/8	22.86	21.84	30.22	40.38
SFFC 8 - 6N	1/2	3/8	10.41	7/8	7/8	22.86	21.84	31.75	41.91
SFFC 8 - 8N	1/2	1/2	10.41	1-1/16	7/8	22.86	21.84	36.57	46.73
SFFC 8 - 12N	1/2	3/4	10.41	1-5/16	7/8	22.86	21.84	38.10	48.26
SFFC 10 - 6N	5/8	3/8	12.70	15/16	1	24.38	21.84	31.75	41.91
SFFC 10 - 8N	5/8	1/2	12.70	1-1/16	1	24.38	21.84	36.57	46.73
SFFC 12 - 8N	3/4	1/2	15.74	1-1/16	1-1/8	24.38	21.84	36.57	46.73
SFFC 12 - 12N	3/4	3/4	15.74	1-5/16	1-1/8	24.38	21.84	38.10	48.26
SFFC 14 - 12N	7/8	3/4	18.28	1-5/16	1-1/4	25.90	21.84	39.62	49.78
SFFC 16 - 12N	1	3/4	22.35	1-3/8	1-1/2	31.24	26.41	41.14	53.34
SFFC 16 - 16N	1	1	22.35	1-5/8	1-1/2	31.24	26.41	50.03	62.23

* ISO Tapered Threads are available upon request

* All dimensions in millimeters unless specified as "inch"

SFFC - FEMALE CONNECTOR



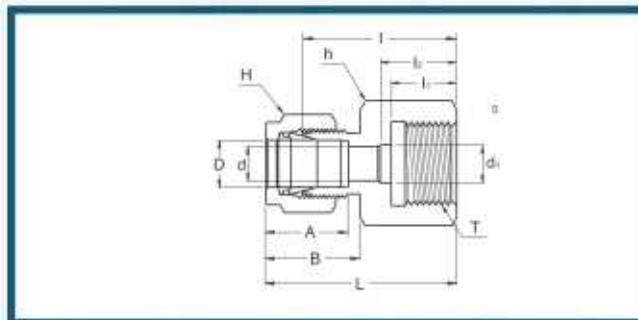
Connects Metric Tubes To Male ISO Tapered Thread

Part No.	Tube O.D. D	T* R (PT)	d Min	Width Across Flat		A	B	I	L
				h	H				
SFFC 3M - 2R	3	1,8	2.4	14	12	12.9	15.3	22.1	28.7
SFFC 3M - 4R	3	1,4	2.4	19	12	12.9	15.3	26.9	33.5
SFFC 4M - 2R	4	1,8	2.4	14	12	13.7	16.1	23.1	29.7
SFFC 6M - 2R	6	1,8	4.8	14	14	15.3	17.7	23.9	31.3
SFFC 6M - 4R	6	1,4	4.8	19	14	15.3	17.7	28.4	35.8
SFFC 6M - 6R	6	3,8	4.8	22	14	15.3	17.7	30.2	37.6
SFFC 6M - 8R	6	1,2	4.8	27	14	15.3	17.7	35.1	42.5
SFFC 8M - 2R	8	1,8	6.4	15	16	16.2	18.6	24.6	32.1
SFFC 8M - 4R	8	1,4	6.4	19	16	16.2	18.6	29.5	37.0
SFFC 8M - 6R	8	3,8	6.4	22	16	16.2	18.6	31.0	38.5
SFFC 8M - 8R	8	1,2	6.4	27	16	16.2	18.6	35.8	43.3
SFFC 10M - 2R	10	1,8	7.9	18	19	17.2	19.5	25.4	33.0
SFFC 10M - 4R	10	1,4	7.9	19	19	17.2	19.5	30.2	37.8
SFFC 10M - 6R	10	3,8	7.9	22	19	17.2	19.5	31.8	39.4
SFFC 10M - 8R	10	1,2	7.9	27	19	17.2	19.5	36.6	44.2
SFFC 12M - 2R	12	1,8	8.3	22	22	22.8	22.0	25.4	35.5
SFFC 12M - 4R	12	1,4	9.5	22	22	22.8	22.0	30.2	40.3
SFFC 12M - 6R	12	3,8	9.5	22	22	22.8	22.0	31.8	41.9
SFFC 12M - 8R	12	1,2	9.5	27	22	22.8	22.0	36.6	46.7
SFFC 12M - 12R	12	3,4	9.5	35	22	22.8	22.0	38.9	49.0
SFFC 15M - 8R	15	1,2	11.9	27	25	24.4	22.0	36.6	46.7
SFFC 16M - 8R	16	1,2	12.7	27	25	24.4	22.0	36.8	46.9
SFFC 20M - 8R	20	1,2	15.9	30	32	26.0	22.0	37.8	47.9
SFFC 20M - 12R	20	3,4	15.9	35	32	26.0	22.0	39.6	49.7
SFFC 22M - 12R	22	3,4	18.3	35	32	26.0	22.0	39.6	49.7
SFFC 22M - 16R	22	1	18.3	41	32	26.0	22.0	47.8	57.9
SFFC 25M - 12R	25	3,4	21.8	35	38	31.3	26.5	41.1	53.4
SFFC 25M - 16R	25	1	21.8	41	38	31.3	26.5	50.0	62.3

* NPT Threads are available upon request

* All dimensions in millimeters unless specified as "inch"

SFGC - GAUGE CONNECTOR



Connects Fractional Tubes To ISO Parallel Thread

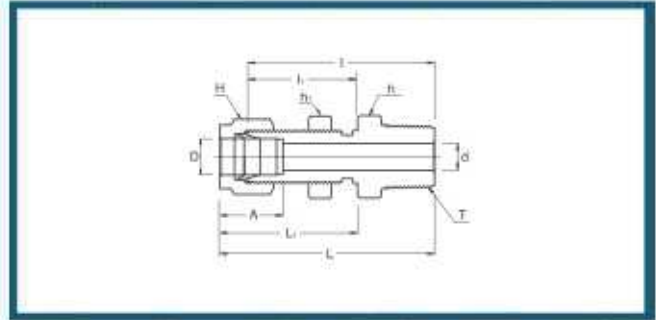
Part No.	Tube O.D. D (inch)	T G (PF)	d Min	d ₁	Width Across Flat		A	B	I	l ₁	l ₂	L
					h (inch)	H (inch)						
SFGC 4 - 4G	1,4	1,4	4.82	5.58	3,4	9,16	15.24	17.78	30.22	13.00	17.00	37.59
SFGC 4 - 6G	1,4	3,8	4.82	6.60	15,16	9,16	15.24	17.78	30.22	14.20	20.30	37.59
SFGC 4 - 8G	1,4	1,2	4.82	6.60	1-1,16	9,16	15.24	17.78	36.07	18.80	24.90	43.43
SFGC 5 - 4G	5,16	1,4	5.58	-	3,4	5,8	16.25	18.54	30.98	13.00	-	38.35
SFGC 5 - 8G	5,16	1,2	7.11	-	1-1,16	5,8	16.25	18.54	33.53	18.80	-	40.89
SFGC 6 - 4G	3,8	1,4	5.58	-	3,4	11,16	16.76	19.30	31.75	13.00	-	39.12
SFGC 6 - 6G	3,8	3,8	6.60	-	15,16	11,16	16.76	19.30	31.24	14.20	-	38.61
SFGC 6 - 8G	3,8	1,2	7.11	-	1-1,16	11,16	16.76	19.30	34.54	18.80	-	41.91
SFGC 8 - 4G	1,2	1,4	5.58	-	7,8	7,8	22.86	21.84	31.80	13.00	-	41.95
SFGC 8 - 6G	1,2	3,8	6.60	-	15,16	7,8	22.86	21.84	34.29	14.20	-	44.45
SFGC 8 - 8G	1,2	1,2	7.11	7.11	1-1,16	7,8	22.86	21.84	38.10	18.80	-	48.26

Connects Metric Tubes To ISO Parallel Thread

Part No.	Tube O.D. D	T G (PF)	d Min	d ₁	Width Across Flat		A	B	I	l ₁	l ₂	L
					h	H						
SFGC 3M - 4G	3	1,4	2.4	5.5	19	12	12.9	15.3	28.7	13	17	35.3
SFGC 6M - 4G	6	1,4	4.8	5.5	19	14	15.3	17.7	30.2	13	17	37.6
SFGC 6M - 6G	6	3,8	4.8	6.5	24	14	15.3	17.7	30.2	14	20	37.6
SFGC 6M - 8G	6	1,2	4.8	7.0	27	14	15.3	17.7	36.1	19	25	43.5
SFGC 8M - 4G	8	1,4	5.5	5.5	19	16	16.2	18.6	31.0	13	-	38.5
SFGC 8M - 6G	8	3,8	6.5	6.5	24	16	16.2	18.6	28.7	14	-	36.2
SFGC 8M - 8G	8	1,2	7.0	7.0	27	16	16.2	18.6	33.5	19	-	41.0
SFGC 10M - 4G	10	1,4	5.5	5.5	19	19	17.2	19.5	31.8	13	-	39.4
SFGC 10M - 6G	10	3,8	6.5	6.5	24	19	17.2	19.5	31.2	14	-	38.8
SFGC 10M - 8G	10	1,2	7.0	7.0	27	19	17.2	19.5	34.5	19	-	42.1
SFGC 12M - 4G	12	1,4	5.5	5.5	22	22	22.8	22.0	31.8	13	-	41.9
SFGC 12M - 6G	12	3,8	6.5	6.5	24	22	22.8	22.0	34.3	14	-	44.4
SFGC 12M - 8G	12	1,2	7.0	7.0	27	22	22.8	22.0	38.1	19	-	48.2
SFGC 20M - 8G	20	1,2	7.0	7.0	30	32	26.0	22.0	44.2	19	-	54.3
SFGC 22M - 8G	22	1,2	7.0	7.0	30	32	26.0	22.0	44.2	19	-	54.3

* All dimensions in millimeters unless specified as "inch"

SFBMC - BULKHEAD MALE CONNECTOR

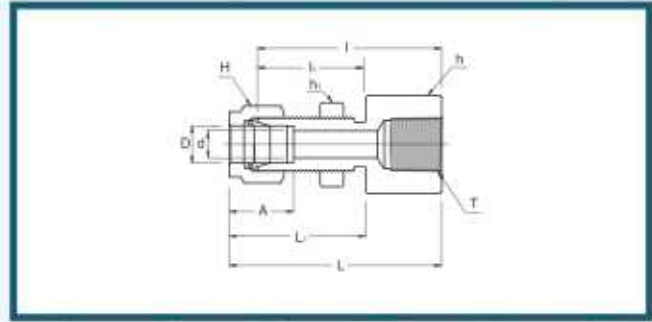


Connects Fractional Tubes To Female NPT Thread

Part No.	Tube O.D. D (inch)	T* (NPT)	d Min	Width Across Flat			A	l	li	L	L ₁	Panel Hole Drill Size	Panel Max. Thickness
				h (inch)	h ₁ (inch)	H (inch)							
SFBMC 2 - 2N	1.8	1.8	2.28	1/2	1/2	7-16	12.70	39.87	24.63	46.48	31.24	8.33	12.70
SFBMC 4 - 2N	1.4	1.8	4.82	5/8	5/8	9-16	15.24	42.16	26.16	49.53	33.52	11.50	10.16
SFBMC 4 - 4N	1.4	1.4	4.82	5/8	5/8	9-16	15.24	46.73	26.16	54.10	33.52	11.50	10.16
SFBMC 6 - 4N	3.8	1.4	7.11	3/4	3/4	11/16	16.76	50.03	29.46	57.40	36.83	14.68	11.17
SFBMC 6 - 6N	3.8	3.8	7.11	3/4	3/4	11/16	16.76	50.03	29.46	57.40	36.83	14.68	11.17
SFBMC 6 - 8N	3.8	1.2	7.11	7/8	3/4	11/16	16.76	56.38	29.46	63.75	36.83	14.68	11.17
SFBMC 8 - 6N	1.2	3.8	9.65	15/16	15/16	7/8	22.86	53.08	31.75	63.24	41.91	19.44	12.70
SFBMC 8 - 8N	1.2	1.2	10.41	15/16	15/16	7/8	22.86	58.67	31.75	68.83	41.91	19.44	12.70
SFBMC 12 - 12N	3.4	3/4	15.74	1-3/16	1-3/16	1-1/8	24.38	66.04	37.33	76.20	47.49	25.79	16.76
SFBMC 16 - 16N	1	1	22.35	1-5/8	1-5/8	1-1/2	31.24	81.02	45.21	93.21	57.40	33.73	19.05

* All dimensions in millimeters unless specified as "inch"

SFBFC - BULKHEAD FEMALE CONNECTOR



Connects Fractional Tubes To Male NPT Thread

Part No.	Tube O.D. D (inch)	T* (NPT)	d Min	Width Across Flat			A	l	h	L	L ₁	Panel Hole Drill Size	Panel Max. Thickness
				h (inch)	h ₁ (inch)	H (inch)							
SFBFC 2 - 2N	1/8	1/8	2.28	9/16	1/2	7/16	12.70	38.10	24.63	44.70	31.24	8.33	12.70
SFBFC 4 - 2N	1/4	1/8	4.82	5/8	5/8	9/16	15.24	39.62	26.16	46.99	33.52	11.50	10.16
SFBFC 4 - 4N	1/4	1/4	4.82	3/4	5/8	9/16	15.24	44.45	26.16	51.81	33.52	11.50	10.16
SFBFC 6 - 4N	3/8	1/4	7.11	3/4	3/4	11/16	16.76	47.75	29.46	55.11	36.83	14.68	11.17
SFBFC 8 - 6N	1/2	3/8	10.41	15/16	15/16	7/8	22.86	51.56	31.75	61.72	41.91	19.44	12.70
SFBFC 8 - 8N	1/2	1/2	10.41	1-1/16	15/16	7/8	22.86	56.38	31.75	66.54	41.91	19.44	12.70
SFBFC 12 - 12N	3/4	3/4	15.74	1-1/4	1-3/16	1-1/8	24.38	63.60	37.33	73.51	47.49	25.79	16.76

* ISO Tapered Threads are available upon request

Connects Metric Tubes To Male NPT Thread

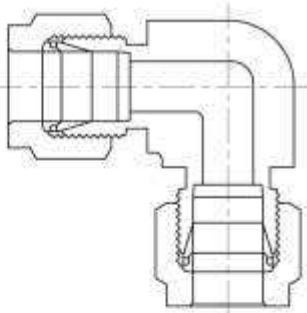
Part No.	Tube O.D. D	T* (NPT)	d Min	Width Across Flat			A	l	h	L	L ₁	Panel Hole Drill Size	Panel Max. Thickness
				h	h ₁	H							
SFBFC 6M - 2N	6	1/8	4.8	15.8	15.8	14	15.3	39.6	27.7	46.90	35.00	11.5	10.2
SFBFC 6M - 4N	6	1/4	4.8	19.0	16.0	14	15.3	44.4	26.2	51.80	33.60	11.5	10.2
SFBFC 8M - 4N	8	1/4	6.3	19.0	17.4	16	16.2	46.7	28.4	53.85	35.55	13.1	11.2
SFBFC 12M - 8N	12	1/2	9.5	27.0	24.0	22	22.8	56.4	31.8	66.50	41.90	19.5	12.7

* ISO Tapered Threads are available upon request

* All dimensions in millimeters unless specified as "inch"

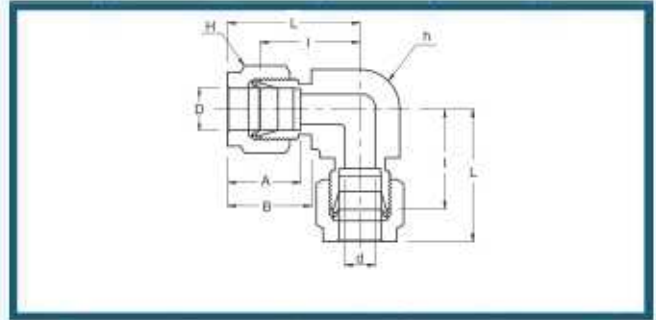
SUPERIOR

HYDROLIQUE PVT LTD



ELBOW & TEE

SFUE - UNION ELBOW



Connects Fractional Tubes

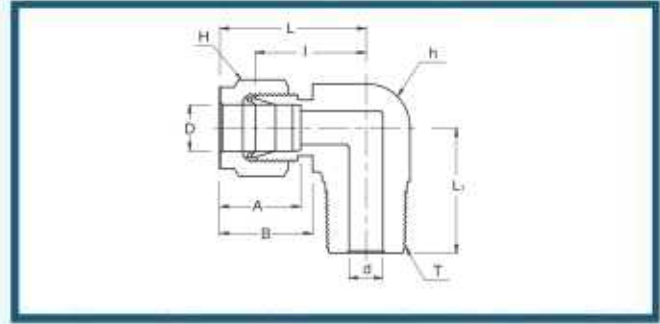
Part No.	Tube O.D. D (inch)	d Min	Width Across Flat		A	B	I	L
			h (inch)	H (inch)				
SFUE - 1	1-1/16	1.27	3/8	5-1/16	8.63	10.92	14.00	18.03
SFUE - 2	1-8	2.28	3/8	7-1/16	12.70	15.24	15.74	22.35
SFUE - 3	3-1/16	3.04	1/2	1/2	13.71	16.00	18.54	25.14
SFUE - 4	1-4	4.82	1/2	9-1/16	15.24	17.78	20.10	27.40
SFUE - 5	5-1/16	6.35	5/8	5/8	16.25	18.54	22.35	29.71
SFUE - 6	3-8	7.11	5/8	11-1/16	16.76	19.30	23.11	30.48
SFUE - 8	1-2	10.41	13/16	7/8	22.86	21.84	25.90	36.06
SFUE - 10	5-8	12.70	15/16	1	24.38	21.84	27.94	38.10
SFUE - 12	3-4	15.74	1-1-1/16	1-1-8	24.38	21.84	29.71	39.87
SFUE - 14	7-8	18.28	1-3-8	1-1-4	25.90	21.84	34.54	44.70
SFUE - 16	1	22.35	1-3-8	1-1-2	31.24	26.41	36.83	49.02
SFUE - 20	1-1-4	27.69	1-11-16	1-7-8	41.15	38.86	44.45	66.55
SFUE - 24	1-1-2	34.04	2	2-1-4	50.04	45.21	50.80	77.98
SFUE - 32	2	45.97	2-3-4	3	67.56	62.74	69.85	107.19

Connects Metric Tubes

Part No.	Tube O.D. D	d Min	Width Across Flat		A	B	I	L
			h	H				
SFUE - 2M	2	1.7	9.5	12	12.9	15.3	15.7	22.3
SFUE - 3M	3	2.4	9.5	12	12.9	15.3	15.7	22.3
SFUE - 4M	4	2.4	12.7	12	13.7	16.1	18.8	25.4
SFUE - 6M	6	4.8	12.7	14	15.3	17.7	19.6	27.0
SFUE - 8M	8	6.4	15.9	16	16.2	18.6	22.4	29.9
SFUE - 10M	10	7.9	17.5	19	17.2	19.5	23.9	31.5
SFUE - 12M	12	9.5	20.6	22	22.8	22.0	25.9	36.0
SFUE - 15M	15	11.9	23.8	25	24.4	22.0	27.9	38.8
SFUE - 16M	16	12.7	23.8	25	24.4	22.0	27.9	38.0
SFUE - 18M	18	15.1	27.0	30	24.4	22.0	29.7	39.8
SFUE - 20M	20	15.9	34.9	32	26.0	22.0	34.5	44.6
SFUE - 22M	22	18.3	34.9	32	26.0	22.0	34.5	44.6
SFUE - 25M	25	21.8	34.9	38	31.3	26.5	36.8	49.1
SFUE - 28M	28	21.8	41	46	36.6	36.6	43.2	64.0
SFUE - 30M	30	26.2	46	50	39.6	39.2	48.3	69.9
SFUE - 32M	32	28.6	46	50	42.0	41.6	49.3	72.3
SFUE - 38M	38	33.7	55	60	49.4	47.9	56.4	84.0

* All dimensions in millimeters unless specified as "inch"

SFME - MALE ELBOW

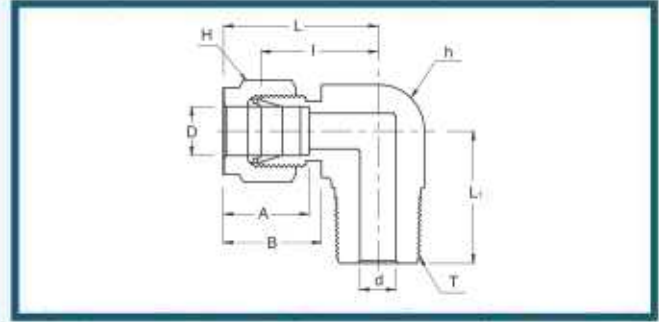


Connects Metric Tubes To Female NPT Thread

Part No.	D	(NPT)	Min	h	H	A	B	I	L	L ₁
SFME 3M - 2N	3	1/8	2.4	12.7	12	12.9	15.3	17.0	23.6	17.8
SFME 3M - 4N	3	1/4	2.4	12.7	12	12.9	15.3	18.0	24.6	23.4
SFME 4M - 2N	4	1/8	2.4	12.7	12	13.7	16.1	18.8	25.4	18.8
SFME 4M - 4N	4	1/4	2.4	12.7	12	13.7	16.1	18.8	25.4	23.4
SFME 6M - 2N	6	1/8	4.8	12.7	14	15.3	17.7	19.6	27.0	18.8
SFME 6M - 4N	6	1/4	4.8	12.7	14	15.3	17.7	19.6	27.0	23.4
SFME 6M - 6N	6	3/8	4.8	15.9	14	15.3	17.7	22.4	29.8	26.2
SFME 6M - 8N	6	1/2	4.8	20.6	14	15.3	17.7	24.4	31.8	33.0
SFME 8M - 2N	8	1/8	4.8	14.3	16	16.2	18.6	21.3	28.8	19.8
SFME 8M - 4N	8	1/4	6.4	14.3	16	16.2	18.6	21.3	28.8	24.4
SFME 8M - 6N	8	3/8	6.4	15.9	16	16.2	18.6	23.1	30.6	26.2
SFME 8M - 8N	8	1/2	6.4	20.6	16	16.2	18.6	25.1	32.6	33.0
SFME 10M - 2N	10	1/8	4.8	17.5	19	17.2	19.5	23.9	31.5	21.6
SFME 10M - 4N	10	1/4	7.1	17.5	19	17.2	19.5	23.9	31.5	26.2
SFME 10M - 6N	10	3/8	7.9	17.5	19	17.2	19.5	23.9	31.5	26.2
SFME 10M - 8N	10	1/2	7.9	20.6	19	17.2	19.5	25.9	33.5	33.0
SFME 12M - 4N	12	1/4	7.1	20.6	22	22.8	22.0	25.9	36.0	28.2
SFME 12M - 6N	12	3/8	9.5	20.6	22	22.8	22.0	25.9	36.0	28.2
SFME 12M - 8N	12	1/2	9.5	20.6	22	22.8	22.0	25.9	36.0	33.0
SFME 12M - 12N	12	3/4	9.5	27.0	22	22.8	22.0	29.7	39.8	36.8
SFME 16M - 6N	16	3/8	9.5	23.8	25	24.4	22.0	27.9	38.0	30.2
SFME 16M - 8N	16	1/2	11.9	23.8	25	24.4	22.0	27.9	38.0	35.1
SFME 16M - 12N	16	3/4	12.7	27.0	25	24.4	22.0	29.7	39.8	36.8
SFME 18M - 8N	18	1/2	11.9	27.0	30	24.4	22.0	29.7	39.8	36.8
SFME 18M - 12N	18	3/4	15.1	27.0	30	24.4	22.0	29.7	39.8	36.8
SFME 20M - 8N	20	1/2	11.9	34.9	32	26.0	22.0	34.5	44.6	41.7
SFME 20M - 12N	20	3/4	15.9	34.9	32	26.0	22.0	34.5	44.6	41.7
SFME 22M - 12N	22	3/4	15.9	34.9	32	26.0	22.0	34.5	44.6	41.7
SFME 22M - 16N	22	1	18.3	34.9	32	26.0	22.0	34.5	44.6	46.5
SFME 25M - 12N	25	3/4	15.9	34.9	38	31.3	26.5	36.8	49.1	41.7
SFME 25M - 16N	25	1	21.8	34.9	38	31.3	26.5	36.8	49.1	46.5
SFME 30M - 20N	30	1-1/4	26.2	46	50	39.6	39.2	48.3	69.9	53.1
SFME 32M - 20N	32	1-1/4	27.8	46	50	42.0	41.6	49.3	72.3	53.1
SFME 38M - 24N	38	1-1/2	33.7	55	60	49.4	47.9	56.4	84.0	60.4

* All dimensions in millimeters unless specified as "inch"

SFME - MALE ELBOW

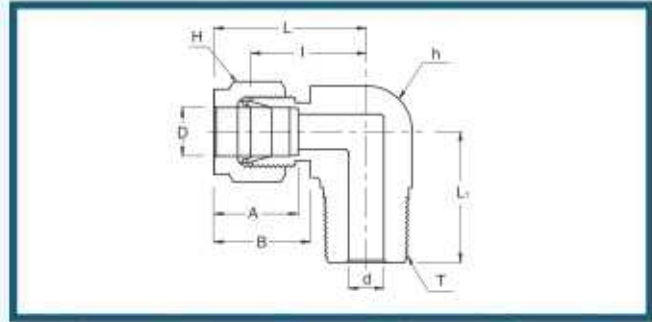


Connects Metric Tubes To Female ISO Tapered Thread

Part No.	Tube O.D. D	T R (PT)	d Min	Width Across Flat		A	B	I	L	L ₁
				h	H					
SFME 3M - 2R	3	1/8	2.4	12.7	12	12.9	15.3	17.0	23.6	17.8
SFME 3M - 4R	3	1/4	2.4	12.7	12	12.9	15.3	18.0	24.6	23.4
SFME 4M - 2R	4	1/8	2.4	12.7	12	13.7	16.1	18.8	25.4	18.8
SFME 4M - 4R	4	1/4	2.4	12.7	12	13.7	16.1	18.8	25.4	23.4
SFME 6M - 2R	6	1/8	4.8	12.7	14	15.3	17.7	19.6	27.0	18.8
SFME 6M - 4R	6	1/4	4.8	12.7	14	15.3	17.7	19.6	27.0	23.4
SFME 6M - 6R	6	3/8	4.8	15.9	14	15.3	17.7	22.4	29.8	26.2
SFME 6M - 8R	6	1/2	4.8	20.6	14	15.3	17.7	24.4	31.8	33.0
SFME 8M - 2R	8	1/8	4.8	14.3	16	16.2	18.6	21.3	28.8	19.8
SFME 8M - 4R	8	1/4	6.4	14.3	16	16.2	18.6	21.3	28.8	24.4
SFME 8M - 6R	8	3/8	6.4	15.9	16	16.2	18.6	23.1	30.6	26.2
SFME 8M - 8R	8	1/2	6.4	20.6	16	16.2	18.6	25.1	32.6	33.0
SFME 10M - 4R	10	1/4	7.1	17.5	19	17.2	19.5	23.9	31.5	26.2
SFME 10M - 6R	10	3/8	7.9	17.5	19	17.2	19.5	23.9	31.5	26.2
SFME 10M - 8R	10	1/2	7.9	20.6	19	17.2	19.5	25.9	33.5	33.0
SFME 12M - 2R	12	1/8	4.8	20.6	22	22.8	22.0	25.9	36.0	23.6
SFME 12M - 4R	12	1/4	7.1	20.6	22	22.8	22.0	25.9	36.0	28.2
SFME 12M - 6R	12	3/8	9.5	20.6	22	22.8	22.0	25.9	36.0	28.2
SFME 12M - 8R	12	1/2	9.5	20.6	22	22.8	22.0	25.9	36.0	33.0
SFME 12M - 12R	12	3/4	9.5	27.0	22	22.8	22.0	29.7	39.8	36.8
SFME 16M - 6R	16	3/8	9.5	23.8	25	24.4	22.0	27.9	38.0	30.2
SFME 16M - 8R	16	1/2	11.9	23.8	25	24.4	22.0	27.9	38.0	35.1
SFME 18M - 8R	18	1/2	11.9	27.0	30	24.4	22.0	29.7	39.8	36.8
SFME 18M - 12R	18	3/4	15.1	27.0	30	24.4	22.0	29.7	39.8	36.8
SFME 20M - 8R	20	1/2	11.9	34.9	32	26.0	22.0	34.5	44.6	41.7
SFME 20M - 12R	20	3/4	15.9	34.9	32	26.0	22.0	34.5	44.6	41.7
SFME 22M - 12R	22	3/4	15.9	34.9	32	26.0	22.0	34.5	44.6	41.7
SFME 22M - 16R	22	1	18.3	34.9	32	26.0	22.0	34.5	44.6	46.5
SFME 25M - 12R	25	3/4	15.9	34.9	38	31.3	26.5	36.8	49.1	41.7
SFME 25M - 16R	25	1	21.8	34.9	38	31.3	26.5	36.8	49.1	46.5

* All dimensions in millimeters unless specified as "inch"

SFME - MALE ELBOW

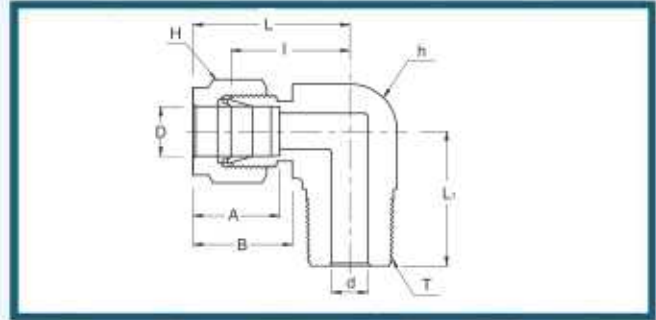


Connects Fractional Tube To Female NPT Thread

Part No.	Tube O.D. D (inch)	T (NPT)	d Min	Width Across Flat		A	B	I	L	L ₁
				h (inch)	H (inch)					
SFME 2 - 2N	1/8	1/8	2.28	1/2	7/16	12.70	15.24	18.00	24.30	18.80
SFME 2 - 4N	1/8	1/4	2.28	1/2	7/16	12.70	15.24	18.00	24.30	23.36
SFME 3 - 2N	3/16	1/8	3.04	1/2	1/2	13.71	16.00	18.79	25.40	18.79
SFME 3 - 4N	3/16	1/4	3.04	1/2	1/2	13.71	16.00	18.79	25.40	23.36
SFME 4 - 2N	1/4	1/8	4.82	1/2	9/16	15.24	17.78	19.55	26.92	18.79
SFME 4 - 4N	1/4	1/4	4.82	1/2	9/16	15.24	17.78	19.55	26.92	23.36
SFME 4 - 6N	1/4	3/8	4.82	5/8	9/16	15.24	17.78	22.35	29.71	26.16
SFME 4 - 8N	1/4	1/2	4.82	13/16	9/16	15.24	17.78	24.38	31.75	33.02
SFME 5 - 2N	5/16	1/8	4.82	9/16	5/8	16.25	18.54	21.33	28.70	19.81
SFME 5 - 4N	5/16	1/4	6.35	9/16	5/8	16.25	18.54	21.33	28.70	24.38
SFME 5 - 6N	5/16	3/8	6.35	11/16	5/8	16.25	18.54	23.11	30.48	26.16
SFME 6 - 2N	3/8	1/8	4.82	5/8	11/16	16.76	19.30	23.11	30.48	20.82
SFME 6 - 4N	3/8	1/4	7.11	5/8	11/16	16.76	19.30	23.11	30.48	25.40
SFME 6 - 6N	3/8	3/8	7.11	5/8	11/16	16.76	19.30	23.87	31.24	26.16
SFME 6 - 8N	3/8	1/2	7.11	13/16	11/16	16.76	19.30	25.90	33.27	33.02
SFME 6 - 12N	3/8	3/4	7.11	1-1/16	11/16	16.76	19.30	29.71	37.08	36.83
SFME 8 - 4N	1/2	1/4	7.11	13/16	7/8	22.86	21.84	25.90	36.06	28.19
SFME 8 - 6N	1/2	3/8	9.65	13/16	7/8	22.86	21.84	25.90	36.06	28.19
SFME 8 - 8N	1/2	1/2	10.41	13/16	7/8	22.86	21.84	25.90	36.06	33.02
SFME 8 - 12N	1/2	3/4	10.41	1-1/16	7/8	22.86	21.84	29.71	39.87	36.83
SFME 10 - 6N	5/8	3/8	9.65	15/16	1	24.38	21.84	27.94	38.10	30.22
SFME 10 - 8N	5/8	1/2	11.93	15/16	1	24.38	21.84	27.94	38.10	35.10
SFME 10 - 12N	5/8	3/4	12.70	1-1/16	1	24.38	21.84	29.71	39.87	36.83
SFME 12 - 8N	3/4	1/2	11.93	1-1/16	1-1/8	24.38	21.84	29.71	39.87	36.83
SFME 12 - 12N	3/4	3/4	15.74	1-1/16	1-1/8	24.38	21.84	29.71	39.87	36.83
SFME 14 - 12N	7/8	3/4	15.74	1-3/8	1-1/4	25.90	21.84	34.54	44.70	41.65
SFME 16 - 12N	1	3/4	15.74	1-3/8	1-1/2	31.24	26.41	36.83	49.02	41.65
SFME 16 - 16N	1	1	22.35	1-3/8	1-1/2	31.24	26.41	36.83	49.02	46.48
SFME 20 - 20N	1-1/4	1-1/4	27.69	1-11/16	1-7/8	41.15	38.86	44.45	66.55	47.75
SFME 24 - 24N	1-1/2	1-1/2	34.04	2	2-1/4	50.04	45.21	50.80	77.98	60.45
SFME 32 - 32N	2	2	45.97	2-3/4	3	67.56	62.74	69.85	107.19	70.61

* All dimensions in millimeters unless specified as "inch"

SFME - MALE ELBOW

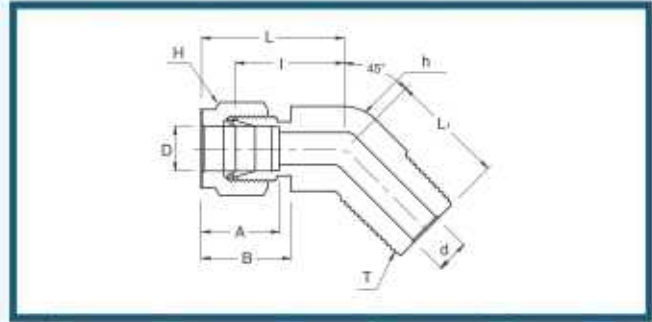


Connects Fractional Tubes To Female ISO Tapered Thread

Part No.	Tube O.D. D (inch)	T R (PT)	d Min	Width Across Flat		A	B	l	L	L ₁
				h (inch)	H (inch)					
SFME 4 - 2R	1/4	1/8	4.82	1/2	9/16	15.24	17.78	19.55	26.92	18.79
SFME 4 - 4R	1/4	1/4	4.82	1/2	9/16	15.24	17.78	19.55	26.92	23.36
SFME 4 - 6R	1/4	3/8	4.82	5/8	9/16	15.24	17.78	22.35	29.71	26.16
SFME 4 - 8R	1/4	1/2	4.82	13/16	9/16	15.24	17.78	24.38	31.75	33.02
SFME 5 - 4R	5/16	1/4	6.35	9/16	5/8	16.25	18.54	21.33	28.70	24.38
SFME 6 - 4R	3/8	1/4	7.11	5/8	11/16	16.76	19.30	23.11	30.48	25.40
SFME 6 - 6R	3/8	3/8	7.11	5/8	11/16	16.76	19.30	23.87	31.24	26.16
SFME 8 - 6R	1/2	3/8	9.65	13/16	7/8	22.86	21.84	25.91	36.07	28.20
SFME 8 - 8R	1/2	1/2	10.41	13/16	7/8	22.86	21.84	25.91	36.07	33.02

* All dimensions in millimeters unless specified as "inch"

SFHME - 45MALE ELBOW



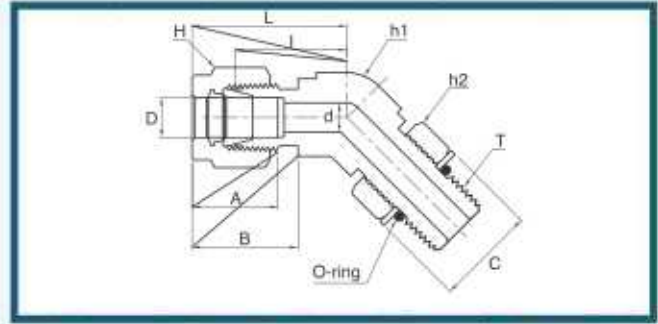
Connects Fractional Tubes To Female NPT Thread

Part No.	Tube O.D. D (Inch)	T* (NPT)	d Min	Width Across Flat		A	B	I	L	L ₁
				h (Inch)	H (Inch)					
SFHME 4 - 2N	1.4	1/8	4.82	1.2	9.16	15.24	17.78	17.27	24.63	16.51
SFHME 4 - 4N	1.4	1/4	4.82	1.2	9.16	15.24	17.78	17.27	24.63	21.08
SFHME 6 - 2N	3.8	1/8	4.82	5.8	11.16	16.76	19.30	20.57	27.94	18.28
SFHME 6 - 4N	3.8	1/4	7.11	5.8	11.16	16.76	19.30	20.57	27.94	22.86
SFHME 6 - 6N	3.8	3/8	7.11	13.16	11.16	16.76	19.30	21.84	29.21	24.13
SFHME 8 - 6N	1.2	3/8	9.65	13.16	7.8	22.86	21.84	21.84	32.00	24.13
SFHME 8 - 8N	1.2	1/2	10.41	13.16	7.8	22.86	21.84	21.84	32.00	28.95

* ISO Tapered Threads are available upon request

* All dimensions in millimeters unless specified as "Inch"

SFPHME-45 POSITIONABLE MALE ELBOW

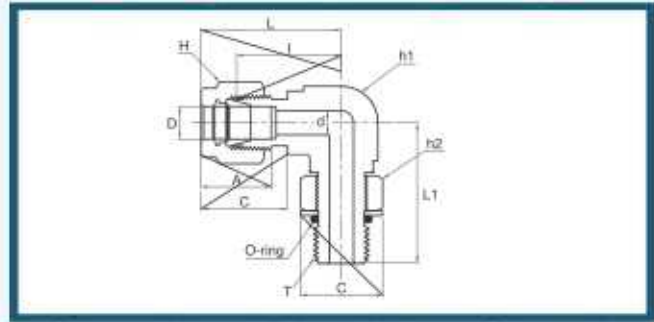


Connects Fractional Tubes To SAE/MS Straight Thread

Part No.	Tube O.D. D (inch)	T (U)	d Min	Width Across Flat			A	B	I	L	L1	C
				h1	h2	H						
SFPHME 4 - 4U	1/4	7/16-20	4.83	1/2	9/16	9/16	15.24	17.78	18.29	25.64	25.65	16.51
SFPHME 5 - 6U	3/8	9/16-18	7.11	5/8	11/16	11/16	16.76	19.30	20.57	27.94	28.19	20.07
SFPHME 8 - 8U	1/2	3/4-16	10.41	13/16	7/8	7/8	22.86	21.84	21.84	32.00	32.26	25.65
SFPHME 12 - 12U	3/4	1-1/16-12	15.75	1-1/8	1-1/4	1-1/8	24.38	24.84	29.72	39.88	47.24	36.58
SFPHME 16 - 16U	1	1-5/16-12	22.35	1-3/8	1-1/2	1-1/2	31.24	28.42	35.31	47.50	50.55	43.94

* All dimensions in millimeters unless specified as "inch"

SFPME- POSITIONABLE MALE ELBOW

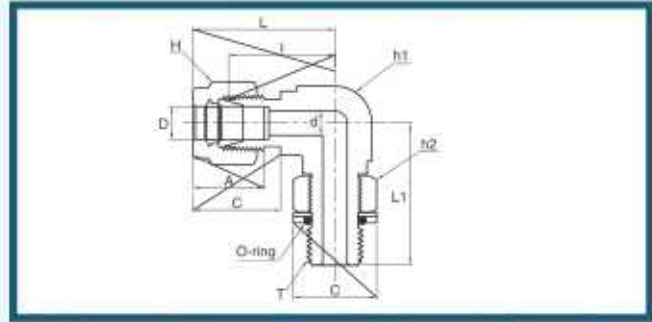


Connects Fractional Tubes To SAE/MS Straight Thread

Part No.	Tube O.D. D (inch)	T (U)	d Min	Width Across Flat			A	B	I	L	L1	C
				h1	h2	H						
SFPME 4 - 4U	1/4	7/16-20	4.83	1/2	9/16	9/16	15.24	17.78	21.08	28.45	28.45	16.51
SFPME 4 - 6U	1/4	9/16-18	4.83	5/8	11/16	9/16	15.24	17.78	23.11	30.48	32.26	20.07
SFPME 5 - 5U	5/16	1/2-20	5.84	9/16	5/8	5/8	16.26	18.54	22.86	30.23	29.46	18.29
SFPME 6 - 6U	3/8	9/16-18	7.11	5/8	11/16	11/16	16.76	19.30	24.64	32.00	32.26	20.07
SFPME 6 - 8U	3/8	3/4-16	7.11	13/16	7/8	11/16	16.76	19.30	27.43	34.80	37.85	25.65
SFPME 8 - 8U	1/2	3/4-16	10.41	13/16	7/8	7/8	22.86	21.84	27.43	37.59	37.85	25.65
SFPME 10 - 10U	5/8	7/8-14	12.70	15/16	1	1	24.38	21.84	29.46	39.62	43.43	29.46
SFPME 12 - 12U	3/4	1-1/16-12	15.75	1-1/16	1-1/4	1-1/8	24.38	21.84	31.24	41.40	48.77	36.58
SFPME 14 - 14U	7/8	3/16-12	18.29	1-3/16	1-3/8	1-1/4	25.91	21.84	33.02	43.18	50.55	40.39
SFPME 16 - 16U	1	1-5/16-12	22.35	1-3/8	1-1/2	1-1/2	31.24	26.42	38.35	50.55	53.59	43.94
SFPME 20 - 20U	1-1/4	1-5/8-12	27.69	1-11/16	1-7/8	1-7/8	41.15	38.86	45.72	67.82	58.17	54.86
SFPME 24 - 24U	1-1/2	1-7/8-12	34.04	2	2-1/8	2-1/4	50.04	45.21	50.80	77.98	60.45	62.23
SFPME 32 - 32U	2-1/2	2-1/2-12	45.97	2-3/4	2-3/4	3	67.56	62.74	69.85	107.19	71.63	80.26

* All dimensions in millimeters unless specified as "inch"

SFPME- POSITIONABLE MALE ELBOW



Connects Fractional Tubes To Female ISO Parallel Thread

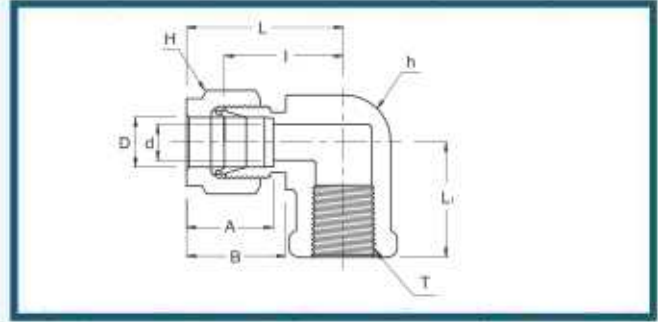
Part No.	Tube O.D. D (inch)	T (PF)	d Min	Width Across Flat			A	B	I	L	L1	C
				h1	h2	H						
SFPME 4 - 2G	1/4	1-8	4.06	1/2	9/16	9/16	15.24	17.78	19.56	26.92	26.42	17.27
SFPME 4 - 4G	1/4	1-4	4.83	5/8	3/4	9/16	15.24	17.78	21.59	28.96	32.26	22.86
SFPME 6 - 4G	3/8	1-4	5.84	5/8	3/4	11/16	16.76	19.30	23.11	30.48	32.26	22.86
SFPME 6 - 6G	3/8	3-8	7.11	13/16	7/8	11/16	16.76	19.30	25.91	33.27	37.08	26.42
SFPME 8 - 4G	1/2	1-4	5.84	13/16	3/4	7-8	22.86	21.84	25.91	36.07	35.05	26.42
SFPME 8 - 6G	1/2	3-8	7.87	13/16	7/8	7-8	22.86	21.84	25.91	36.07	37.08	22.86
SFPME 8 - 8G	1/2	1-2	10.41	15/16	1-1/16	7-8	22.86	21.84	27.94	38.10	43.43	26.42
SFPME 10 - 8G	5/8	1-2	11.94	15/16	1-1/16	1	24.38	21.84	27.94	38.10	43.43	32.00
SFPME 12 - 8G	3/4	1-2	11.94	1-1/16	1-1/16	1-1 8	24.38	21.84	29.72	39.88	45.21	32.00
SFPME 12 - 12G	3/4	3-4	15.75	1-1/16	1-3/8	1-1 8	24.38	21.84	29.72	39.88	48.77	41.15
SFPME 16 - 12G	1	3-4	15.75	1-3/8	1-3/8	1-1 2	31.24	26.42	36.83	49.02	53.34	41.15
SFPME 16 - 16G	1	1	19.81	1-3/8	1-3/8	1-1 2	31.24	26.42	36.83	49.02	53.59	48.51

Connects Metric Tubes To Female ISO Parallel Thread

Part No.	Tube O.D. D (inch)	T (PF)	d Min	Width Across Flat			A	B	I	L	L1	C
				h1	h2	H						
SFPME 6M - 2G	6	1 8	4.0	1/2	9/16	14	15.3	17.7	19.6	27.0	26.4	17.3
SFPME 6M - 4G	6	1 4	4.8	5/8	3/4	14	15.3	17.7	21.6	29.0	32.3	22.9
SFPME 8M - 2G	8	1 8	4.0	9/16	9/16	16	16.2	18.6	21.3	28.8	27.4	17.3
SFPME 8M - 4G	8	1 4	5.9	5/8	3/4	16	16.2	18.6	22.4	29.9	32.2	22.9
SFPME 10M - 4G	10	1 4	5.9	13/16	3/4	19	17.2	19.5	25.9	33.5	35.0	22.9
SFPME 10M - 6G	10	3 8	7.9	13/16	7/8	19	17.2	19.5	25.9	33.5	37.1	26.4
SFPME 12M - 4G	12	1 4	5.9	13/16	3/4	22	22.8	22.0	25.9	36.0	35.0	22.9
SFPME 12M - 6G	12	3 8	7.9	13/16	7/8	22	22.8	22.0	25.9	36.0	37.1	26.4
SFPME 12M - 8G	12	1 2	9.5	15/16	1-1/16	22	22.8	22.0	27.9	38.0	43.4	32.0
SFPME 12M - 12G	12	3 4	9.5	1-1/16	1-3 8	22	22.8	22.0	29.7	39.8	48.8	41.1

* All dimensions in millimeters unless specified as "inch"

SFFE - FEMALE ELBOW



Connects Fractional Tubes To Male NPT Thread

Part No.	Tube O.D. D (inch)	T* (NPT)	d Min	Width Across Flat		A	B	I	L	Li
				h (inch)	H (inch)					
SFFE 2 - 2N	1/8	1 8	2.28	1 2	7:16	12.70	15.24	18.03	24.63	19.05
SFFE 2 - 4N	1/8	1 4	2.28	11 16	7:16	12.70	15.24	20.82	27.43	22.35
SFFE 3 - 2N	3/16	1 8	3.04	1 2	1/2	13.71	16.00	18.79	25.40	19.05
SFFE 4 - 2N	1/4	1 8	4.82	1 2	9:16	15.24	17.78	19.55	26.92	19.05
SFFE 4 - 4N	1/4	1 4	4.82	11 16	9:16	15.24	17.78	22.35	29.71	22.35
SFFE 4 - 6N	1/4	3 8	4.82	13 16	9:16	15.24	17.78	24.38	31.75	22.35
SFFE 4 - 8N	1/4	1 2	4.82	1	9:16	15.24	17.78	27.17	34.54	28.44
SFFE 5 - 2N	5/16	1 8	6.35	9/16	5/8	16.25	18.54	21.33	28.70	19.05
SFFE 5 - 4N	5/16	1 4	6.35	11 16	5/8	16.25	18.54	23.11	30.48	22.35
SFFE 6 - 2N	3/8	1 8	7.11	5 8	11/16	16.76	19.30	23.11	30.48	19.05
SFFE 6 - 4N	3/8	1 4	7.11	11 16	11/16	16.76	19.30	23.87	31.24	22.35
SFFE 6 - 6N	3/8	3 8	7.11	13 16	11/16	16.76	19.30	25.90	33.27	22.35
SFFE 6 - 8N	3/8	1 2	7.11	1	11/16	16.76	19.30	28.70	36.06	28.44
SFFE 8 - 4N	1/2	1 4	10.41	13 16	7/8	22.86	21.84	25.90	36.06	22.35
SFFE 8 - 6N	1/2	3 8	10.41	13 16	7/8	22.86	21.84	25.90	36.06	22.35
SFFE 8 - 8N	1/2	1 2	10.41	1	7/8	22.86	21.84	28.70	38.86	37.00
SFFE 10 - 6N	5/8	3 8	12.70	15 16	1	24.38	21.84	27.94	38.10	22.35
SFFE 10 - 8N	5/8	1 2	12.70	1-1/16	1	24.38	21.84	29.71	39.87	28.44
SFFE 12 - 8N	3/4	1 2	15.74	1-1/16	1-1/8	24.38	21.84	29.71	39.87	28.44
SFFE 12 - 12N	3/4	3 4	15.74	1-3/8	1-1/8	24.38	21.84	34.54	44.70	31.75
SFFE 14 - 12N	7/8	3 4	18.28	1-3/8	1-1/4	25.90	21.84	34.54	44.70	31.75
SFFE 16 - 12N	1	3 4	22.35	1-3/8	1-1/2	31.24	26.41	36.83	49.02	31.75
SFFE 16 - 16N	1	1	22.35	1-11/16	1-1/2	31.24	26.41	41.40	53.59	38.10

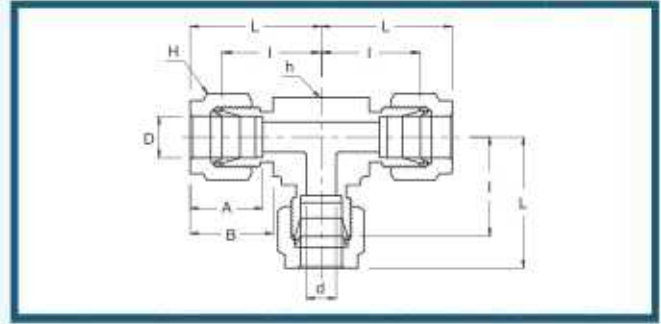
Connects Metric Tubes To Male NPT Thread

Part No.	Tube O.D. D	T* (NPT)	d Min	Width Across Flat		A	B	I	L	Li
				h	H					
SFFE 6M - 4N	6	1/4	4.8	17.46	14	15.3	17.7	22.4	29.8	22.40
SFFE 6M - 6N	6	3/8	4.8	20.63	14	15.3	17.7	24.4	31.7	22.40
SFFE 6M - 8N	6	1/2	4.8	25.40	14	15.3	17.7	27.2	34.6	28.40
SFFE 8M - 4N	8	1/4	6.4	17.46	16	16.2	18.6	23.1	30.6	22.40
SFFE 8M - 8N	8	1/2	6.4	20.63	16	16.2	18.6	28.0	35.2	28.40
SFFE 10M - 4N	10	1/4	7.9	17.46	19	17.2	19.5	25.9	33.5	22.40
SFFE 10M - 6N	10	3/8	7.9	20.63	19	17.2	19.5	25.9	33.5	22.40
SFFE 10M - 8N	10	1/2	7.9	25.40	19	17.2	19.5	28.7	36.1	28.40
SFFE 12M - 6N	12	3/8	9.5	20.63	22	22.8	22.0	25.9	36.2	22.35
SFFE 12M - 8N	12	1/2	9.5	25.40	22	22.8	22.0	28.7	38.8	28.40

* ISO Tapered Threads are available upon request

* All dimensions in millimeters unless specified as "inch"

SFUT - UNION TEE



Connects Fractional Tubes

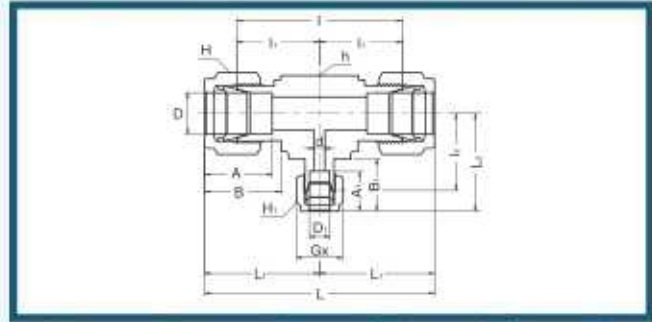
Part No.	Tube O.D. D (inch)	d Min	Width Across Flat		A	B	I	L
			h (inch)	H (inch)				
SFUT - 1	1/16	1.27	3/8	5/16	8.63	10.92	14.00	18.03
SFUT - 2	1/8	2.28	3/8	7/16	12.70	15.24	15.80	22.35
SFUT - 3	3/16	3.04	1/2	1/2	13.71	16.00	18.54	25.14
SFUT - 4	1/4	4.82	1/2	9/16	15.24	17.78	20.10	27.40
SFUT - 5	5/16	6.35	5/8	5/8	16.25	18.54	22.35	29.71
SFUT - 6	3/8	7.11	5/8	11/16	16.76	19.30	23.11	30.48
SFUT - 8	1/2	10.41	13/16	7/8	22.86	21.84	25.90	36.06
SFUT - 10	5/8	12.70	1	1	24.38	21.84	28.70	38.86
SFUT - 12	3/4	15.74	1-1/16	1-1/8	24.38	21.84	29.71	39.87
SFUT - 14	7/8	18.28	1-3/8	1-1/4	25.90	21.84	34.54	44.70
SFUT - 16	1	22.35	1-3/8	1-1/2	31.24	26.41	36.83	49.02
SFUT - 20	1-1/4	27.69	1-11/16	1-7/8	41.15	38.86	44.45	66.55
SFUT - 24	1-1/2	34.04	2	2-1/4	50.04	45.21	50.80	77.98
SFUT - 32	2	45.97	2-3/4	3	67.56	62.74	69.85	107.19

Connects Metric Tubes

Part No.	Tube O.D. D	d Min	Width Across Flat		A	B	I	L
			h	H				
SFUT - 2M	2	1.7	9.5	12	12.9	15.3	15.7	22.3
SFUT - 3M	3	2.4	9.5	12	12.9	15.3	15.7	22.3
SFUT - 4M	4	2.4	12.7	12	13.7	16.1	18.8	25.4
SFUT - 6M	6	4.8	12.7	14	15.3	17.7	19.6	27.0
SFUT - 8M	8	6.4	15.9	16	16.2	18.6	22.4	29.9
SFUT - 10M	10	7.9	17.5	19	17.2	19.5	23.9	31.5
SFUT - 12M	12	9.5	20.6	22	22.8	22.0	25.9	36.0
SFUT - 15M	15	11.9	25.4	25	24.4	22.0	28.7	38.8
SFUT - 16M	16	12.7	25.4	25	24.4	22.0	28.7	38.8
SFUT - 18M	18	15.1	27.0	30	24.4	22.0	29.7	38.8
SFUT - 20M	20	15.9	34.9	32	26.0	22.0	34.5	44.6
SFUT - 22M	22	18.3	34.9	32	26.0	22.0	34.5	44.6
SFUT - 25M	25	21.8	34.9	38	31.3	26.5	36.8	49.1
SFUT - 28M	28	21.8	41	46	36.6	36.6	43.2	64.0
SFUT - 30M	30	26.2	46	50	39.6	39.2	48.3	69.9
SFUT - 32M	32	28.6	46	50	42.0	41.6	49.3	72.3
SFUT - 38M	38	33.7	55	60	49.4	47.9	56.4	84.0

* All dimensions in millimeters unless specified as "inch"

SFRUT - REDUCING UNION TEE

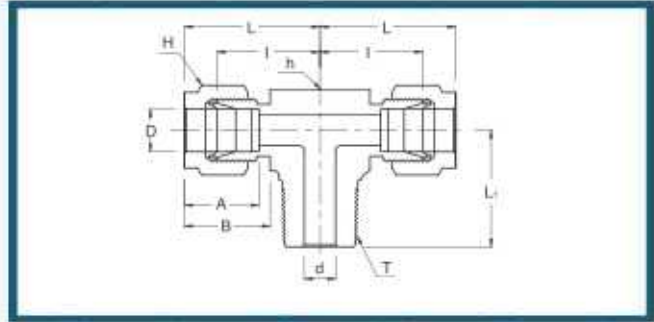


Connects Fractional Tubes

Part No.	Tube O.D.		d Min	Width Across Flat			A	A _i	B	B _i	I	I _i	I ₂	L	L ₁	L ₂
	D (inch)	D _i (inch)		h (inch)	H (inch)	H _i (inch)										
SFRUT 6 - 6 - 4	3/8	1/4	4.82	5/8	11/16	9/16	16.76	15.24	19.30	17.78	46.22	23.11	21.59	60.96	30.48	28.95
SFRUT 8 - 8 - 4	1/2	1/4	4.82	13/16	7/8	9/16	22.86	15.24	21.84	17.78	51.81	25.90	24.38	72.13	36.06	31.75
SFRUT 8 - 8 - 6	1/2	3/8	7.11	13/16	7/8	11/16	22.86	16.76	21.84	19.30	51.81	25.90	25.90	72.13	36.06	33.27
SFRUT 10 - 10 - 6	5/8	3/8	7.11	1	1	11/16	24.38	16.76	21.84	19.30	57.40	28.70	28.70	77.72	38.86	36.06
SFRUT 12 - 12 - 6	3/4	3/8	7.11	1 1/16	1 1/8	11/16	24.38	16.76	21.84	19.30	59.43	29.71	29.71	79.75	39.87	37.08
SFRUT 12 - 12 - 8	3/4	1/2	10.41	1 1/16	1 1/8	7/8	24.38	22.86	21.84	21.84	59.43	29.71	29.71	79.75	39.87	39.87
SFRUT 16 - 16 - 6	1	3/8	7.11	1 3/8	1 1/2	1 1/16	31.24	16.76	26.41	19.30	73.66	36.83	34.54	98.04	49.02	41.91
SFRUT 16 - 16 - 8	1	1/2	10.41	1 3/8	1 1/2	7/8	31.24	21.84	26.41	22.86	73.66	36.83	34.54	98.04	49.02	44.70
SFRUT 16 - 16 - 12	1	3/4	15.74	1 3/8	1 1/2	1 1/8	31.24	24.38	26.41	21.84	73.66	36.83	34.54	98.04	49.02	44.70

* All dimensions in millimeters unless specified as "inch"

SFMBT MALE BRANCH TEE



Connects Fractional Tubes To Female NPT Thread

Part No.	Tube O.D. D (inch)	T* (NPT)	d Min	Width Across Flat		A	B	I	L	L ₁
				h (inch)	H (inch)					
SFMBT 2 - 2N	1/8	1/8	2.28	1/2	7/16	12.70	15.24	18.30	24.91	18.90
SFMBT 2 - 4N	1/8	1/4	2.28	1/2	7/16	12.70	15.24	18.03	24.63	23.36
SFMBT 3 - 2N	3/16	1/8	3.04	1/2	1/2	13.71	16.00	17.78	25.40	18.79
SFMBT 4 - 2N	1/4	1/8	4.82	1/2	9/16	15.24	17.78	19.55	26.92	18.79
SFMBT 4 - 4N	1/4	1/4	4.82	1/2	9/16	15.24	17.78	19.55	26.92	23.36
SFMBT 5 - 2N	5/16	1/8	4.82	5/8	5/8	16.25	18.54	22.35	29.71	20.82
SFMBT 6 - 4N	3/8	1/4	7.11	5/8	11/16	16.76	19.30	23.11	30.48	25.40
SFMBT 6 - 6N	3/8	3/8	7.11	5/8	11/16	16.76	19.30	23.10	30.48	28.19
SFMBT 8 - 6N	1/2	3/8	9.65	13/16	7/8	22.86	21.84	25.90	36.06	28.19
SFMBT 8 - 8N	1/2	1/2	10.41	13/16	7/8	22.86	21.84	25.90	36.06	33.02
SFMBT 10 - 8N	5/8	1/2	11.93	1	1	24.38	21.84	28.70	38.86	35.81
SFMBT 12 - 12N	3/4	3/4	15.74	1-1/16	1-1/8	24.38	21.84	29.71	39.87	36.83

* ISO Tapered Threads are available upon request

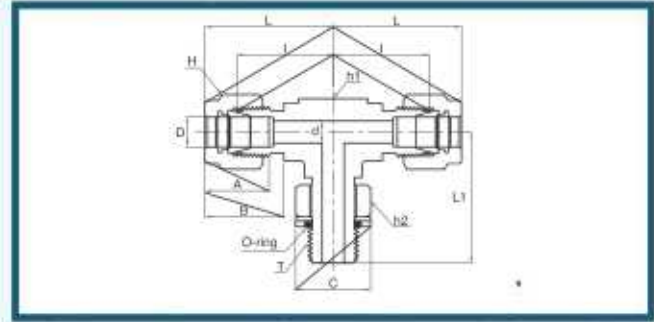
Connects Metric Tubes To Female ISO Tapered Thread

Part No.	Tube O.D. D	T* R (PT)	d Min	Width Across Flat		A	B	I	L	L ₁
				h	H					
SFMBT 3M - 2R	3	1/8	2.4	12.7	12	12.9	15.3	17.0	23.6	17.8
SFMBT 3M - 4R	3	1/4	2.4	12.7	12	12.9	15.3	18.0	24.6	23.4
SFMBT 4M - 2R	4	1/8	2.4	12.7	12	13.7	16.1	18.8	25.4	18.8
SFMBT 6M - 2R	6	1/8	4.8	12.7	14	15.3	17.7	19.6	27.0	18.8
SFMBT 6M - 4R	6	1/4	4.8	14.2	14	15.3	17.7	19.6	27.0	23.4
SFMBT 8M - 2R	8	1/8	4.8	14.3	16	16.2	18.6	21.3	28.8	19.6
SFMBT 8M - 4R	8	1/4	6.4	14.3	16	16.2	18.6	21.3	28.8	24.4
SFMBT 10M - 4R	10	1/4	7.1	17.5	19	17.2	19.5	23.9	31.5	28.2
SFMBT 10M - 6R	10	3/8	7.9	17.5	19	17.2	19.5	23.9	31.5	28.2
SFMBT 12M - 4R	12	1/4	7.1	20.6	22	22.8	22.0	25.9	36.0	28.2
SFMBT 12M - 6R	12	3/8	9.5	20.6	22	22.8	22.0	25.9	36.0	28.2
SFMBT 12M - 8R	12	1/2	9.5	20.6	22	22.8	22.0	25.9	36.0	33.0
SFMBT 16M - 6R	16	3/8	9.5	25.4	25	24.4	22.0	27.9	38.0	30.2
SFMBT 16M - 8R	16	1/2	11.9	25.4	25	24.4	22.0	27.9	38.0	35.1
SFMBT 20M - 12R	20	3/4	15.9	31.8	32	26.0	22.0	34.5	44.6	41.7

* NPT Threads are available upon request

* All dimensions in millimeters unless specified as "inch"

SFPMBT POSITIONABLE MALE BRANCH TEE



Connects Fractional Tubes To Female ISO Parallel Thread

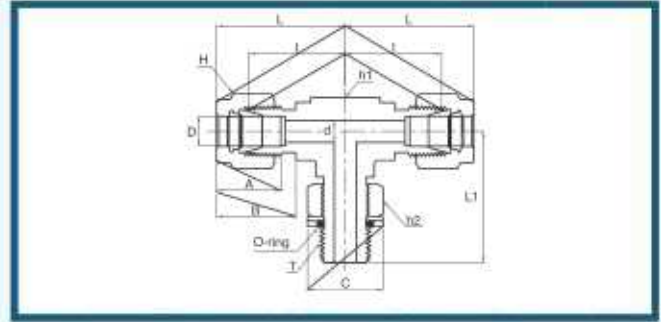
Part No.	Tube O.D. D (inch)	T (PF)	d Min	Width Across Flat			A	B	I	L	L1	C
				h1	h2	H						
SFPMBT 4 - 2G	1/4	1-8	4.06	1-2	9-16	9-16	15.24	17.78	19.56	26.92	26.42	17.27
SFPMBT 4 - 4G	1/4	1-4	4.83	5-8	3-4	9-16	15.24	17.78	21.59	28.96	32.26	22.86
SFPMBT 6 - 4G	3/8	1-4	5.84	5-8	3-4	11-16	16.76	19.30	21.11	30.48	32.26	22.86
SFPMBT 8 - 6G	1/4	3-8	7.87	13-16	7-8	7-8	22.86	21.84	25.91	36.07	37.08	26.42
SFPMBT 8 - 8G	3/8	1-2	10.41	15-16	1-1-16	7-8	22.86	21.84	27.94	38.10	43.43	32.00
SFPMBT 10 - 8G	1/2	1-2	11.94	15-16	1-1-16	1	24.38	21.84	27.94	38.10	43.43	32.00
SFPMBT 12 - 8G	3/4	1-2	11.94	1-1-16	1-1-16	1-1-8	24.38	21.84	29.72	39.88	45.21	32.00
SFPMBT 12 - 12G	3/4	3-4	15.75	1-1-16	1-3-8	1-1-8	24.38	21.84	29.72	39.88	48.77	41.15
SFPMBT 16 - 16G	1	1	19.81	1-3-8	1-5-8	1-1-2	31.24	26.42	36.83	49.02	53.59	48.51

Connects Metric Tubes To Female ISO Parallel Thread

Part No.	Tube O.D. D (inch)	T (PF)	d Min	Width Across Flat			A	B	I	L	L1	C
				h1	h2	H						
SFPMBT 6M - 2G	6	1-8	4.0	1-2	9-16	14	15.3	17.7	19.6	27.0	26.4	17.3
SFPMBT 6M - 4G	6	1-4	4.8	5-8	3-4	14	15.3	17.7	21.6	29.0	32.3	22.9
SFPMBT 8M - 2G	8	1-8	4.0	9-16	9-16	16	16.2	18.6	21.3	28.8	27.4	17.3
SFPMBT 8M - 4G	8	1-4	5.9	5-8	3-4	16	16.2	18.6	22.4	29.9	32.2	22.9
SFPMBT 10M - 4G	10	1-4	5.9	13-16	3-4	19	17.2	19.5	25.9	33.5	35.0	22.9
SFPMBT 12M - 6G	10	3-8	7.9	13-16	7-8	22	22.8	22.0	25.9	36.0	37.1	26.4
SFPMBT 12M - 8G	12	1-4	9.5	15-16	1-1-16	22	22.8	22.0	27.9	38.0	35.0	32.0

* All dimensions in millimeters unless specified as "inch"

SFPMBT POSITIONABLE MALE BRANCH TEE

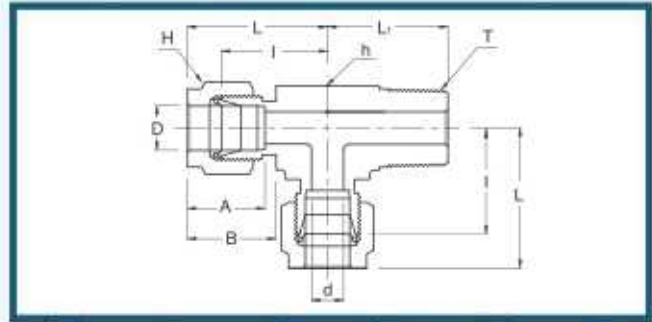


Connects Fractional Tubes To SAE/MS Straight Thread Boss

Part No.	Tube O.D. D (inch)	T (U)	d Min	Width Across Flat			A	B	I	L	L1	C
				h1	h2	H						
SFPMBT 4 - 4U	1/4	7/16-20	4.83	1/2	9/16	9/16	15.24	17.78	21.08	28.45	28.45	16.51
SFPMBT 6 - 6U	3/8	9/16-18	7.11	5/8	11/16	11/16	16.76	19.30	24.64	32.00	32.26	20.07
SFPMBT 8 - 8U	1/2	3/4-16	10.41	13/16	7/8	7/8	22.86	21.84	27.43	37.59	37.85	25.65
SFPMBT 12 - 12U	3/4	1-1/16-12	15.75	1-1/16	1-1/4	1-1/8	24.38	21.84	31.24	41.40	48.77	36.58
SFPMBT 16 - 16U	1	1-5/16-12	22.35	1-3/8	1-1/2	1-1/2	31.24	26.42	38.35	50.55	53.59	43.94
SFPMBT 20 - 20U	1-1/4	1-5/8-12	27.69	1-11/16	1-7/8	1-7/8	41.15	38.86	45.72	67.82	58.17	54.86
SFPMBT 24 - 24U	1-1/2	1-7/8-12	34.04	2	2-1/8	2-1/4	50.04	45.21	50.80	77.98	60.45	62.23
SFPMBT 32 - 32U	2	2-1/2-12	45.97	2-3/4	2-3/4	3	67.56	62.74	69.85	107.19	71.63	80.26

* All dimensions in millimeters unless specified as "inch"

SFMRT MALE RUN TEE



Connects Fractional Tubes To Female NPT Thread

Part No.	Tube O.D. D (inch)	T* (NPT)	d Min	Width Across Flat		A	B	I	L	L ₁
				h (inch)	H (inch)					
SFMRT 2 - 2N	1/8	1/8	2.28	1/2	7/16	12.70	15.24	18.30	24.91	18.90
SFMRT 2 - 4N	1/8	1/4	2.28	1/2	7/16	12.70	15.24	18.03	24.63	23.36
SFMRT 3 - 2N	3/16	1/8	3.04	1/2	1/2	13.71	16.00	17.78	25.40	18.79
SFMRT 4 - 2N	1/4	1/8	4.82	1/2	9/16	15.24	17.78	19.55	26.92	18.79
SFMRT 4 - 4N	1/4	1/4	4.82	1/2	9/16	15.24	17.78	19.55	26.92	23.36
SFMRT 5 - 2N	5/16	1/8	4.82	5/8	5/8	16.25	18.54	22.35	29.71	20.82
SFMRT 6 - 4N	3/8	1/4	7.11	5/8	11/16	16.76	19.30	23.11	30.48	25.40
SFMRT 6 - 6N	3/8	3/8	7.11	5/8	11/16	16.76	19.30	23.10	30.48	28.19
SFMRT 8 - 6N	1/2	3/8	9.65	13/16	7/8	22.86	21.84	25.90	36.06	28.19
SFMRT 8 - 8N	1/2	1/2	10.41	13/16	7/8	22.86	21.84	25.90	36.06	33.02
SFMRT 10 - 8N	5/8	1/2	11.93	1	1	24.38	21.84	28.70	38.86	35.81
SFMRT 12 - 12N	3/4	3/4	15.74	1-1/16	1-1/8	24.38	21.84	29.71	39.87	36.83

* ISO Tapered Threads are available upon request

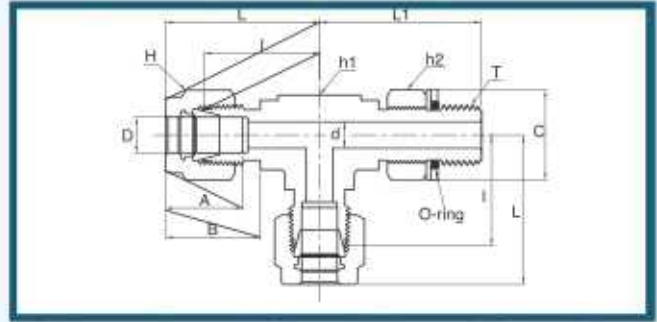
Connects Metric Tubes To Female ISO Tapered Thread

Part No.	Tube O.D. D	T* R (PT)	d Min	Width Across Flat		A	B	I	L	L ₁
				h	H					
SFMRT 3M - 2R	3	1/8	2.4	12.7	12	12.9	15.3	17.0	23.6	17.8
SFMRT 3M - 4R	3	1/4	2.4	12.7	12	12.9	15.3	18.0	24.6	23.4
SFMRT 4M - 2R	4	1/8	2.4	12.7	12	13.7	16.1	18.8	25.4	18.8
SFMRT 6M - 2R	6	1/8	4.8	12.7	14	15.3	17.7	19.6	27.0	18.8
SFMRT 6M - 4R	6	1/4	4.8	14.2	14	15.3	17.7	19.6	27.0	23.4
SFMRT 8M - 2R	8	1/8	4.8	14.3	16	16.2	18.6	21.3	28.8	19.8
SFMRT 8M - 4R	8	1/4	6.4	14.3	16	16.2	18.6	21.3	28.8	24.4
SFMRT 10M - 4R	10	1/4	7.1	17.5	19	17.2	19.5	23.9	31.5	28.2
SFMRT 10M - 6R	10	3/8	7.9	17.5	19	17.2	19.5	23.9	31.5	28.2
SFMRT 12M - 4R	12	1/4	7.1	20.6	22	22.8	22.0	25.9	36.0	28.2
SFMRT 12M - 6R	12	3/8	9.5	20.6	22	22.8	22.0	25.9	36.0	28.2
SFMRT 12M - 8R	12	1/2	9.5	20.6	22	22.8	22.0	25.9	36.0	33.0
SFMRT 16M - 6R	16	3/8	9.5	25.4	25	24.4	22.0	27.9	38.0	30.2
SFMRT 16M - 8R	16	1/2	11.9	25.4	25	24.4	22.0	27.9	38.0	35.1
SFMRT 20M - 12R	20	3/4	15.9	31.8	32	26.0	22.0	34.5	44.6	41.7

* NPT Threads are available upon request

* All dimensions in millimeters unless specified as "inch"

SFPMRT POSITIONABLE MALE RUN TEE



Connects Fractional Tubes To Female ISO Parallel Thread

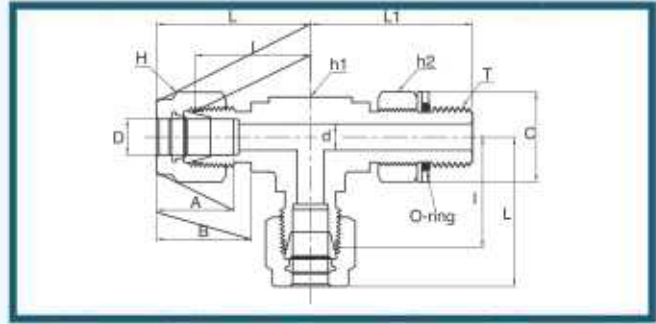
Part No.	Tube O.D. D (inch)	T (PF)	d Min	Width Across Flat			A	B	I	L	L1	C
				h1	h2	H						
SFPMRT 4 - 2G	1/4	1/8	4.06	1/2	9/16	9/16	15.24	17.78	19.56	26.92	26.42	17.27
SFPMRT 4 - 4G	1/4	1/4	4.83	5/8	3/4	9/16	15.24	17.78	21.59	28.96	32.26	22.86
SFPMRT 6 - 4G	3/8	1/4	5.84	5/8	3/4	11/16	16.76	19.30	21.11	30.48	32.26	22.86
SFPMRT 8 - 6G	1/4	3/8	7.87	13/16	7/8	7/8	22.86	21.84	25.91	36.07	37.08	26.42
SFPMRT 8 - 8G	3/8	1/2	10.41	15/16	1-1/16	7/8	22.86	21.84	27.94	38.10	43.43	32.00
SFPMRT 10 - 8G	1/2	1/2	11.94	15/16	1-1/16	1	24.38	21.84	27.94	38.10	43.43	32.00
SFPMRT 12 - 8G	3/4	1/2	11.94	1-1/16	1-1/16	1-1/8	24.38	21.84	29.72	39.88	45.21	32.00
SFPMRT 12 - 12G	3/4	3/4	15.75	1-1/16	1-3/8	1-1/8	24.38	21.84	29.72	39.88	48.77	41.15
SFPMRT 16 - 16G	1	1	19.81	1-3/8	1-5/8	1-1/2	31.24	26.42	36.83	49.02	53.59	48.51

Connects Metric Tubes To Female ISO Parallel Thread

Part No.	Tube O.D. D (inch)	T (PF)	d Min	Width Across Flat			A	B	I	L	L1	C
				h1	h2	H						
SFPMRT 6M - 2G	6	1/8	4.0	1/2	9/16	14	15.3	17.7	19.6	27.0	26.4	17.3
SFPMRT 6M - 4G	6	1/4	4.8	5/8	3/4	14	15.3	17.7	21.6	29.0	32.2	22.9
SFPMRT 8M - 2G	8	1/8	4.0	9/16	9/16	16	16.2	18.6	21.3	28.8	27.4	17.3
SFPMRT 8M - 4G	8	1/4	6.4	5/8	3/4	16	16.2	18.6	22.4	29.9	32.2	22.9
SFPMRT 10M - 4G	10	1/4	5.9	13/16	3/4	19	17.2	19.5	25.9	33.5	35.0	22.9
SFPMRT 12M - 6G	10	3/8	7.9	13/16	7/8	22	22.8	22.0	25.9	36.0	37.1	26.4
SFPMRT 12M - 8G	12	1/2	9.5	15/16	1-1/16	22	22.8	22.0	27.9	38.0	43.4	22.9

* All dimensions in millimeters unless specified as "inch"

SFPMRT POSITIONABLE MALE TEE

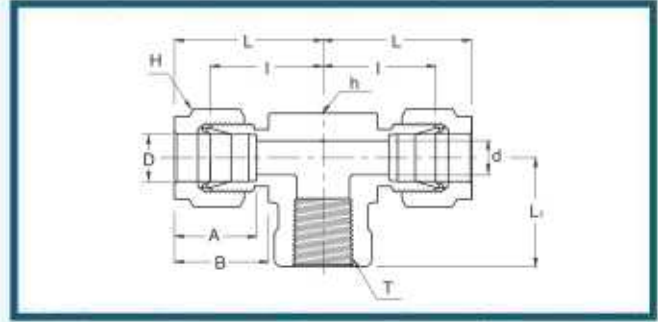


Connects Fractional Tubes To SAE/MS Straight Thread

Part No.	Tube O.D. D (inch)	T (U)	d Min	Width Across Flat			A	B	I	L	L1	C
				h1	h2	H						
SFPMRT 4 - 4U	1/4	7-16-20	4.83	1/2	9/16	9/16	15.24	17.78	21.08	28.45	28.45	16.51
SFPMRT 6 - 6U	3/8	9-16-18	7.11	5/8	11/16	11/16	16.76	19.30	24.64	32.00	32.26	20.07
SFPMRT 8 - 8U	1/2	3/4-16	10.41	13/16	7/8	7/8	22.86	21.84	27.43	37.59	37.85	25.65
SFPMRT 12 - 12U	3/4	1-1/16-12	15.75	1-1/16	1-1/4	1-1/8	24.38	21.84	31.24	41.40	48.77	36.58
SFPMRT 16 - 16U	1	1-5/8-12	22.35	1-3/8	1-1/2	1-1/2	31.24	26.42	38.35	50.55	53.59	43.94
SFPMRT 20 - 20U	1-1/4	1-5/8-12	27.69	1-11/16	1-7/8	1-7/8	41.15	38.86	45.72	67.82	58.17	54.86
SFPMRT 24 - 24U	1-1/2	1-7/8-12	34.04	2	2-1/8	2-1/4	50.04	45.21	50.80	77.98	60.45	62.23
SFPMRT 32 - 32U	2	2-1/2-12	45.97	2-3/4	2-3/4	3	67.56	62.74	69.85	107.19	71.63	80.26

* All dimensions in millimeters unless specified as "inch"

SFFBT FEMALE BRANCH TEE



Connects Fractional Tubes To Male NPT Thread

Part No.	Tube O.D. D (inch)	T* (NPT)	d Min	Width Across Flat		A	B	I	L	L ₁
				h (inch)	H (inch)					
SFFBT 2 - 2N	1/8	1/8	2.28	1/2	7/16	12.70	15.24	18.03	24.63	19.05
SFFBT 4 - 2N	1/4	1/8	4.82	1/2	9/16	15.24	17.78	19.55	26.92	19.05
SFFBT 4 - 4N	1/4	1/4	4.82	11/16	9/16	15.24	17.78	22.35	29.71	22.35
SFFBT 6 - 4N	3/8	1/4	7.11	11/16	11/16	16.76	19.30	23.87	31.24	22.35
SFFBT 6 - 6N	3/8	3/8	7.11	13/16	11/16	16.76	19.30	25.90	33.27	22.35
SFFBT 6 - 8N	3/8	1/2	7.11	1	11/16	16.76	19.30	28.70	36.07	28.45
SFFBT 8 - 4N	1/2	1/4	10.41	13/16	7/8	22.86	21.84	25.90	36.06	22.35
SFFBT 8 - 6N	1/2	3/8	10.41	13/16	7/8	22.86	21.84	25.90	36.06	22.35
SFFBT 8 - 8N	1/2	1/2	10.41	1	7/8	22.86	21.84	28.70	38.86	28.44
SFFBT 10 - 8N	5/8	1/2	12.70	1	1	24.38	21.84	28.70	38.86	28.44
SFFBT 12 - 12N	3/4	3/4	15.74	1-3/8	1-1/8	24.38	21.84	34.54	44.70	31.75
SFFBT 16 - 12N	1	3/4	22.35	1-3/8	1-1/2	31.24	26.41	36.83	49.02	31.75
SFFBT 16 - 16N	1	1	22.35	1-11/16	1-1/2	31.24	26.41	41.40	53.59	38.10

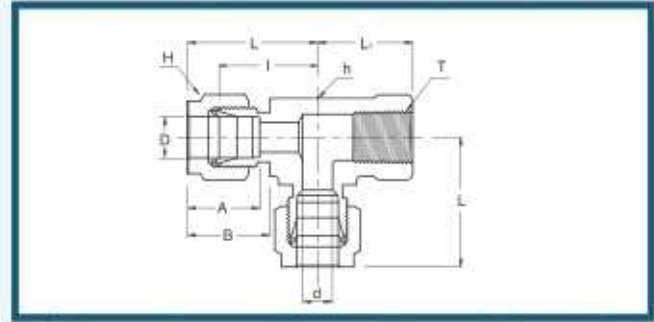
Connects Metric Tubes To Male NPT Thread

Part No.	Tube O.D. D	T* (NPT)	d Min	Width Across Flat		A	B	I	L	L ₁
				h	H					
SFFBT 6M - 2N	6	1/8	4.8	12.70	14	15.3	17.7	19.6	27.0	19.0
SFFBT 6M - 4N	6	1/4	4.8	17.46	14	15.3	17.7	22.4	29.8	22.4
SFFBT 6M - 6N	6	3/8	4.8	20.63	14	15.3	17.7	24.4	31.7	22.4
SFFBT 6M - 8N	6	1/2	4.8	25.40	14	15.3	17.7	27.2	34.5	28.4
SFFBT 8M - 2N	8	1/8	6.4	15.87	16	16.2	18.6	22.4	29.9	19.0
SFFBT 8M - 4N	8	1/4	6.4	17.46	16	16.2	18.6	23.1	30.6	22.4
SFFBT 8M - 6N	8	3/8	6.4	20.63	16	16.2	18.6	25.2	32.4	22.4
SFFBT 8M - 8N	8	1/2	6.4	25.40	16	16.2	18.6	28.0	35.2	28.4
SFFBT 10M - 4N	10	1/4	7.9	20.63	19	17.2	19.5	25.9	33.5	22.4
SFFBT 10M - 6N	10	3/8	7.9	20.63	19	17.2	19.5	25.9	33.3	22.4
SFFBT 10M - 8N	10	1/2	9.5	25.40	19	17.2	19.5	26.2	33.6	22.4
SFFBT 12M - 4N	12	1/4	9.5	20.63	22	22.8	22.0	25.9	36.0	22.4
SFFBT 12M - 6N	12	3/8	9.5	20.63	22	22.8	22.0	25.9	36.0	22.4
SFFBT 12M - 8N	12	1/2	9.5	25.40	22	22.8	22.0	29.7	40.0	28.4
SFFBT 16M - 8N	16	1/2	12.7	25.40	25	24.4	22.0	28.7	38.8	28.4

* ISO Tapered Threads are available upon request

* All dimensions in millimeters unless specified as "inch"

SFRT FEMALE RUN TEE



Connects Fractional Tubes To Male NPT Thread

Part No.	Tube O.D. D (inch)	T* (NPT)	d Min	Width Across Flat		A	B	I	L	Li
				h (inch)	H (inch)					
SFFRT 2 - 2N	1/8	1/8	2.28	1.2	7/16	12.70	15.24	18.03	24.63	19.05
SFFRT 4 - 2N	1/4	1/8	4.82	1.2	9/16	15.24	17.78	19.55	26.92	19.05
SFFRT 4 - 4N	1/4	1/4	4.82	11.16	9/16	15.24	17.78	22.35	29.71	22.35
SFFRT 6 - 4N	3/8	1/4	7.11	11.16	11-16	16.76	19.30	23.87	31.24	22.35
SFFRT 8 - 6N	1/2	3/8	10.41	13.16	7-8	22.86	21.84	25.90	36.06	22.35
SFFRT 8 - 8N	1/2	1/2	10.41	1	7-8	22.86	21.84	28.70	39.87	26.44
SFFRT 12 - 12N	3/4	3/4	15.74	1-3/8	1-1/8	24.38	21.84	34.54	44.70	31.75
SFFRT 16 - 12N	1	3/4	22.35	1-3/8	1-1/2	31.24	26.41	36.83	49.02	31.75
SFFRT 16 - 16N	1	1	22.35	1-11/16	1-1/2	31.24	26.41	41.40	53.59	38.10

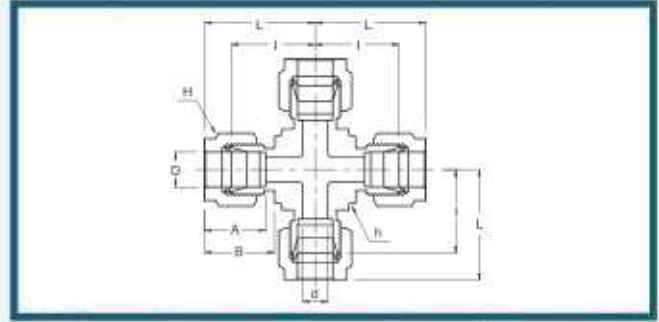
Connects Metric Tubes To Male NPT Thread

Part No.	Tube O.D. D	T* (NPT)	d Min	Width Across Flat		A	B	I	L	Li
				h	H					
SFFRT 6M - 2N	6	1.8	4.8	12.70	14	15.3	17.7	19.6	27.0	19.0
SFFRT 6M - 4N	6	1.4	4.8	17.46	14	15.3	17.7	22.4	29.8	22.4
SFFRT 6M - 8N	6	1.2	4.8	25.40	14	15.3	17.7	27.2	34.5	28.4
SFFRT 8M - 2N	8	1.8	6.4	15.87	16	16.2	18.6	22.4	29.9	19.0
SFFRT 8M - 4N	8	1.4	6.4	17.46	16	16.2	18.6	23.1	30.6	22.4
SFFRT 8M - 6N	8	3.8	6.4	20.63	16	16.2	18.6	25.2	32.4	22.4
SFFRT 8M - 8N	8	1.2	6.4	25.40	16	16.2	18.6	28.0	35.2	28.4
SFFRT 12M - 4N	12	1.4	9.5	20.63	22	22.8	22.0	25.9	33.5	22.4
SFFRT 12M - 6N	12	3.8	9.5	20.63	22	22.8	22.0	25.9	36.0	22.4
SFFRT 12M - 8N	12	1.2	9.5	26.98	22	22.8	22.0	29.7	40.0	28.4
SFFRT 16M - 8N	16	1.2	12.7	25.40	25	24.4	22.0	29.7	39.8	28.4

* ISO Tapered Threads are available upon request

* All dimensions in millimeters unless specified as "inch"

SFUC UNION CROSS



Connects Fractional Tubes

Part No.	Tube O.D. D (inch)	d Min	Width Across Flat		A	B	I	L
			h (inch)	H (inch)				
SFUC - 1	1/16	1.27	3/8	5/16	8.63	10.92	14.00	18.03
SFUC - 2	1/8	2.28	3/8	7/16	12.70	15.24	15.74	22.35
SFUC - 3	3/16	3.04	1/2	1/2	13.71	16.00	18.54	25.14
SFUC - 4	1/4	4.82	1/2	9/16	15.24	17.78	19.55	26.92
SFUC - 5	5/16	6.35	5/8	5/8	16.25	18.54	22.35	29.71
SFUC - 6	3/8	7.11	5/8	11/16	16.76	19.30	23.11	30.48
SFUC - 8	1/2	10.41	13/16	7/8	22.86	21.84	25.90	36.06
SFUC - 10	5/8	12.70	15/16	1	24.38	21.84	28.70	38.80
SFUC - 12	3/4	15.74	1-1/16	1-1/8	24.38	21.84	29.71	39.87
SFUC - 14	7/8	18.28	1-3/8	1-1/4	25.90	21.84	34.54	44.70
SFUC - 16	1	22.35	1-3/8	1-1/2	31.24	26.41	36.83	49.02

Connects Metric Tubes

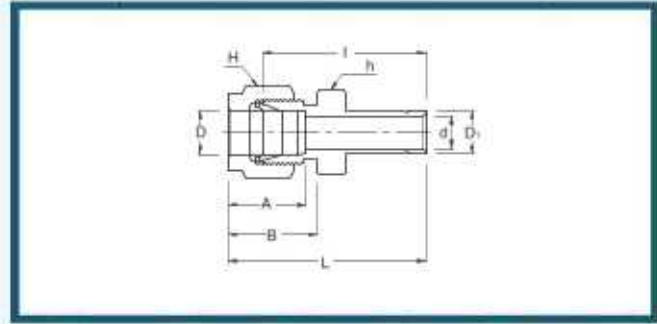
Part No.	Tube O.D. D	d Min	Width Across Flat		A	B	I	L
			h	H				
SFUC - 3M	3	2.4	9.5	12	12.9	15.3	15.7	22.3
SFUC - 6M	6	4.8	12.7	14	15.3	17.7	19.6	27.0
SFUC - 8M	8	6.4	15.9	16	16.2	18.6	22.4	29.9
SFUC - 10M	10	7.9	20.6	19	17.2	19.5	25.9	33.5
SFUC - 12M	12	9.5	20.6	22	22.8	22.0	25.9	36.0
SFUC - 16M	16	12.7	23.8	25	24.4	22.0	26.9	37.0
SFUC - 18M	18	15.1	27.0	30	24.4	22.0	28.2	38.3
SFUC - 20M	20	15.9	34.9	32	26.0	22.0	34.5	44.6
SFUC - 25M	25	21.8	34.9	38	31.3	26.5	36.8	49.1

* All dimensions in millimeters unless specified as "inch"



STUB TUBE CONNECTOR,
AN TUBE &
O- RING SEAL

SFR- REDUCER



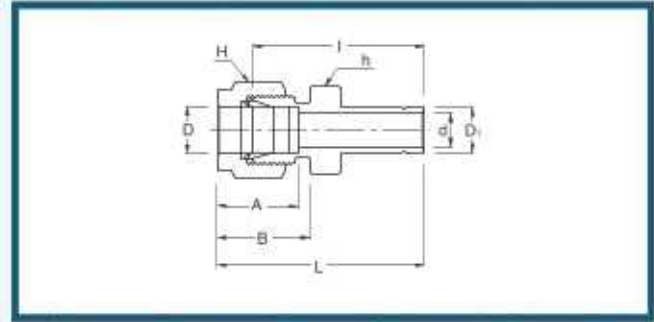
Connects Fractional Tubes To Fractional SUPERFLOW Port

Part No.	Tube O.D.		d Min	Width Across Flat		A	B	I	L
	D (inch)	D ₁ (inch)		h (inch)	H (inch)				
SFR 2 - 1	1.8	1.16	0.76	7/16	7/16	12.70	15.24	22.35	28.95
SFR 2 - 2	1.8	1.8	2.03	7/16	7/16	12.70	15.24	26.92	33.52
SFR 2 - 3	1.8	3/16	2.28	7/16	7/16	12.70	15.24	27.68	34.29
SFR 2 - 4	1.8	1.4	2.28	7/16	7/16	12.70	15.24	29.46	36.06
SFR 2 - 6	1.8	3/8	2.28	7/16	7/16	12.70	15.24	30.98	37.59
SFR 2 - 8	1.8	1/2	2.28	9/16	7/16	12.70	15.24	37.59	44.19
SFR 3 - 2	3/16	1.8	2.03	7/16	1/2	13.71	16.00	28.19	34.79
SFR 3 - 4	3/16	1.4	3.04	7/16	1/2	13.71	16.00	30.48	37.08
SFR 4 - 2	1.4	1.8	2.03	1/2	9/16	15.24	17.78	29.46	36.83
SFR 4 - 3	1.4	3/16	3.04	1/2	9/16	15.24	17.78	30.22	37.59
SFR 4 - 4	1.4	1.4	4.82	1/2	9/16	15.24	17.78	31.75	39.11
SFR 4 - 5	1.4	5/16	4.82	1/2	9/16	15.24	17.78	32.51	39.87
SFR 4 - 6	1.4	3/8	4.82	1/2	9/16	15.24	17.78	33.27	40.64
SFR 4 - 8	1.4	1/2	4.82	9/16	9/16	15.24	17.78	38.86	46.22
SFR 4 - 10	1.4	5/8	4.82	11/16	9/16	15.24	17.78	40.64	48.00
SFR 4 - 12	1.4	3/4	4.82	13/16	9/16	15.24	17.78	41.40	47.75
SFR 5 - 6	5/16	3/8	6.35	9/16	5/8	16.25	18.54	34.54	41.91
SFR 5 - 8	5/16	1/2	6.35	9/16	5/8	16.25	18.54	40.13	47.49
SFR 6 - 4	3/8	1.4	4.82	5/8	11/16	16.76	19.30	34.03	41.40
SFR 6 - 6	3/8	3/8	7.11	5/8	11/16	16.76	19.30	35.81	43.18
SFR 6 - 8	3/8	1/2	7.11	5/8	11/16	16.76	19.30	41.14	48.51
SFR 6 - 10	3/8	5/8	7.11	11/16	11/16	16.76	19.30	42.92	50.29
SFR 6 - 12	3/8	3/4	7.11	13/16	11/16	16.76	19.30	42.92	50.29
SFR 8 - 4	1.2	1.4	4.82	13/16	7/8	22.86	21.84	34.79	44.95
SFR 8 - 6	1.2	3/8	7.11	13/16	7/8	22.86	21.84	36.57	46.73
SFR 8 - 8	1.2	1/2	9.90	13/16	7/8	22.86	21.84	42.16	52.32
SFR 8 - 10	1.2	5/8	10.41	13/16	7/8	22.86	21.84	43.68	53.84
SFR 8 - 12	1.2	3/4	10.41	13/16	7/8	22.86	21.84	43.68	53.84
SFR 8 - 16	1.2	1	10.41	1-1/16	7/8	22.86	21.84	50.03	60.19
SFR 10 - 12	5/8	3/4	12.70	15/16	1	24.38	21.84	44.45	54.61
SFR 10 - 14	5/8	7/8	12.70	15/16	1	24.38	21.84	45.97	56.13
SFR 10 - 16	5/8	1	12.70	1-1/16	1	24.38	21.84	50.80	60.96
SFR 12 - 8	3/4	1/2	9.90	1-1/16	1-1/8	24.38	21.84	44.45	54.61
SFR 12 - 16	3/4	1	15.74	1-1/16	1-1/8	24.38	21.84	52.32	62.48

* Fractional Tube to Metric SUPERFLOW port are available upon request

* All dimensions in millimeters unless specified as "inch"

SFR- REDUCER

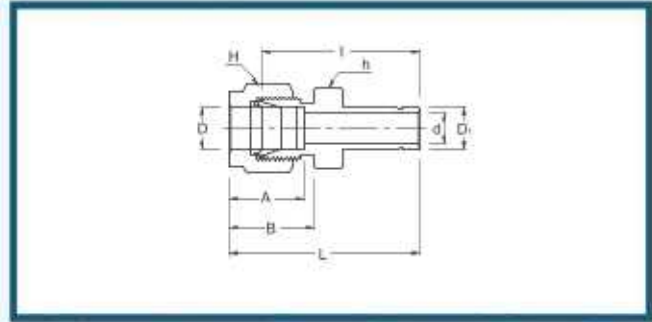


Connects Metric Tubes To Metric SUPERFLOW Port

Part No.	Tube O.D.		d Min	Width Across Flat		A	B	I	L
	D	D ₁		h	H				
SFR 3M - 4M	3	4	2.4	12	12	12.9	15.3	28.4	35.0
SFR 3M - 6M	3	6	2.4	12	12	12.9	15.3	29.5	36.1
SFR 3M - 10M	3	10	2.4	14	12	12.9	15.3	31.8	38.4
SFR 4M - 6M	4	6	2.4	12	12	13.7	16.1	30.5	37.1
SFR 6M - 3M	6	3	1.8	14	14	15.3	17.7	29.5	36.9
SFR 6M - 8M	6	8	4.8	14	14	15.3	17.7	32.5	39.9
SFR 6M - 10M	6	10	4.8	14	14	15.3	17.7	33.3	40.7
SFR 6M - 12M	6	12	4.8	14	14	15.3	17.7	38.9	46.3
SFR 8M - 6M	8	6	4.6	15	16	16.2	18.6	32.8	40.3
SFR 8M - 10M	8	10	6.4	15	16	16.2	18.6	34.5	42.0
SFR 8M - 12M	8	12	6.4	15	16	16.2	18.6	40.1	47.6
SFR 10M - 6M	10	6	4.6	18	19	17.2	19.5	34.8	42.4
SFR 10M - 8M	10	8	6.4	18	19	17.2	19.5	35.8	43.4
SFR 10M - 12M	10	12	7.9	18	19	17.2	19.5	42.2	49.8
SFR 10M - 15M	10	15	7.9	18	19	17.2	19.5	43.7	51.3
SFR 10M - 18M	10	18	7.9	22	19	17.2	19.5	43.7	51.3
SFR 12M - 6M	12	6	4.6	22	22	22.8	22.0	34.8	44.9
SFR 12M - 8M	12	8	6.4	22	22	22.8	22.0	35.8	45.9
SFR 12M - 10M	12	10	7.7	22	22	22.8	22.0	36.6	46.7
SFR 12M - 16M	12	16	9.5	22	22	22.8	22.0	43.7	53.8
SFR 12M - 18M	12	16	9.5	22	22	22.8	22.0	43.7	53.8
SFR 12M - 20M	12	20	9.5	22	22	22.8	22.0	46.0	56.1
SFR 12M - 22M	12	22	9.5	24	22	22.8	22.0	46.0	56.1
SFR 12M - 25M	12	25	9.5	27	22	22.8	22.0	52.3	62.4
SFR 16M - 12M	16	12	9.1	24	25	24.4	22.0	42.9	53.0
SFR 18M - 12M	18	12	9.1	27	30	24.4	22.0	44.5	54.6
SFR 18M - 16M	18	16	12.7	27	30	24.4	22.0	46.0	56.1
SFR 18M - 20M	18	20	15.1	27	30	24.4	22.0	47.5	57.6
SFR 18M - 22M	18	22	15.1	27	30	24.4	22.0	47.5	57.6
SFR 18M - 25M	18	25	15.1	27	30	24.4	22.0	52.3	62.4
SFR 20M - 16M	20	16	12.7	30	32	26.0	22.0	47.8	57.9
SFR 20M - 18M	20	18	13.9	30	32	26.0	22.0	47.8	57.9
SFR 20M - 22M	20	22	15.8	30	32	26.0	22.0	49.3	59.4
SFR 20M - 25M	20	25	15.8	30	32	26.0	22.0	54.1	64.2
SFR 22M - 18M	22	18	13.9	30	32	26.0	22.0	47.8	57.9
SFR 22M - 20M	22	20	15.1	30	32	26.0	22.0	49.3	59.4
SFR 22M - 25M	22	25	18.3	30	32	26.0	22.0	54.1	64.2
SFR 25M - 18M	25	18	13.9	35	38	31.3	26.5	50.8	63.1
SFR 25M - 20M	25	20	15.1	35	38	31.3	26.5	52.3	64.6

* All dimensions in millimeters unless specified as "inch"

SFR- REDUCER

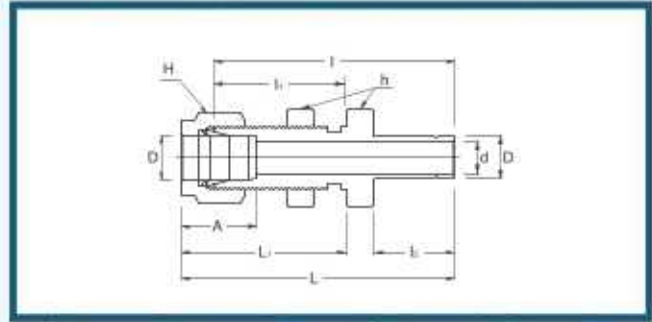


Connects Metric Tubes To Fractional SUPERFLOW Port

Part No.	Tube O.D.		d Min	Width Across Flat		A	B	I	L
	D	D ₁ (inch)		h	H				
SFR 3M - 2	3	1,8	2.0	12	12	12.9	15.3	26.9	33.5
SFR 3M - 4	3	1,4	2.4	12	12	12.9	15.3	29.5	36.1
SFR 6M - 4	6	1,4	4.8	14	14	15.3	17.7	31.8	39.2
SFR 6M - 5	6	5,16	4.8	14	14	15.3	17.7	32.5	39.9
SFR 6M - 8	6	3,8	4.8	14	14	15.3	17.7	33.3	40.7
SFR 6M - 8	6	1,2	4.8	14	14	15.3	17.7	38.9	46.3
SFR 8M - 6	8	3,8	6.4	15	16	16.2	18.6	34.5	42.0
SFR 8M - 8	8	1,2	6.4	15	16	16.2	18.6	40.1	47.6
SFR 10M - 6	10	3,8	7.1	18	19	17.2	19.5	36.6	44.2
SFR 10M - 8	10	1,2	7.9	18	19	17.2	19.5	42.2	49.8
SFR 12M - 8	12	1,2	9.5	22	22	22.8	22.0	42.2	52.3
SFR 12M - 12	12	3,4	9.5	22	22	22.8	22.0	43.7	53.8
SFR 18M - 12	18	3,4	15.1	27	30	24.4	22.0	46.0	56.1
SFR 18M - 16	18	1	15.1	27	30	24.4	22.0	52.3	62.4

* All dimensions in millimeters unless specified as "inch"

SFBR- BULKHEAD REDUCER

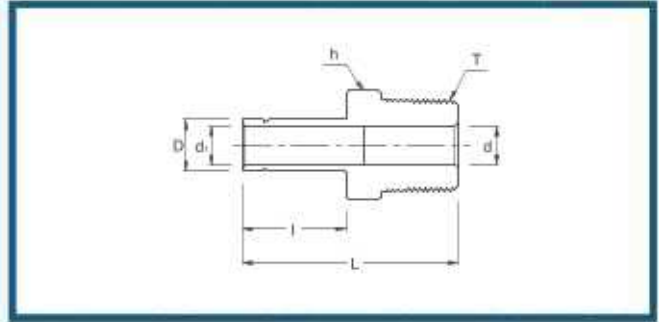


Connects Fractional Tubes To Fractional SUPERFLOW Port

Part No.	Tube O.D. D (inch)	d Min	Width Across Flat		A	I	I ₁	I ₂	L	L ₁	Panel Hole Drill Size	Panel Max. Thickness
			h (inch)	H (inch)								
SFBR 2 - 2	1.6	2.03	1.2	7/16	12.70	42.92	24.63	13.46	49.53	31.24	8.33	12.70
SFBR 4 - 4	1.4	4.82	5.8	9/16	15.24	48.51	26.16	15.74	55.88	33.52	11.50	10.16
SFBR 6 - 6	3.6	7.11	3.4	11/16	16.76	53.84	29.46	17.52	61.21	36.83	14.68	11.17
SFBR 8 - 8	1.2	10.41	15/16	7/8	22.86	62.73	31.75	23.11	72.89	41.91	19.44	12.70
SFBR 10 - 10	5.8	12.70	1-1/16	1	24.38	65.02	32.51	24.70	75.18	42.67	22.62	12.70
SFBR 16 - 16	1	20.32	1-5/8	1-1/2	31.24	88.13	45.21	31.70	100.33	57.40	33.73	19.05

* All dimensions in millimeters unless specified as "inch"

SFMA- MALE ADAPTER



Connects Fractional SUPERFLOW Port To Female NPT Thread

Part No.	Tube O.D. D (inch)	T* (NPT)	d (Min)	d ₁	Width Across Flat h (inch)	l	L
SFMA 2 - 2N	1.8	1.8	4.82	2.28	7/16	13.45	29.50
SFMA 2 - 4N	1.8	1/4	7.11	2.28	9/16	13.45	34.80
SFMA 3 - 2N	3/16	1.8	4.82	3.04	7/16	14.20	30.22
SFMA 3 - 4N	3/16	1/4	7.11	3.04	9/16	14.20	35.56
SFMA 4 - 2N	1/4	1.8	4.82	4.82	7/16	15.75	31.80
SFMA 4 - 4N	1/4	1/4	4.82	4.82	9/16	15.75	37.08
SFMA 4 - 6N	1/4	3/8	4.82	4.82	11/16	15.75	37.84
SFMA 4 - 8N	1/4	1/2	4.82	4.82	7/8	15.75	43.43
SFMA 5 - 2N	5/16	1.8	4.82	6.35	7/16	16.80	32.76
SFMA 5 - 4N	5/16	1/4	6.35	6.35	9/16	16.80	38.10
SFMA 6 - 2N	3/8	1.8	4.82	7.11	7/16	17.50	33.50
SFMA 6 - 4N	3/8	1/4	7.11	7.11	9/16	17.50	38.90
SFMA 6 - 6N	3/8	3/8	7.11	7.11	11/16	17.50	39.60
SFMA 6 - 8N	3/8	1/2	7.11	7.11	7/8	17.50	45.20
SFMA 8 - 4N	1/2	1/4	7.11	9.90	9/16	23.20	44.50
SFMA 8 - 6N	1/2	3/8	9.90	9.90	11/16	23.20	45.20
SFMA 8 - 8N	1/2	1/2	9.90	9.90	7/8	23.20	50.80
SFMA 10 - 6N	5/8	3/8	9.90	12.70	11/16	24.70	47.40
SFMA 10 - 8N	5/8	1/2	11.94	12.70	7/8	24.70	52.30
SFMA 10 - 12N	5/8	3/4	14.98	12.70	1-1/16	24.70	52.30
SFMA 12 - 8N	3/4	1/2	11.94	14.98	7/8	24.70	52.30
SFMA 12 - 12N	3/4	3/4	14.98	14.98	1-1/16	24.70	52.30
SFMA 12 - 16N	3/4	1	20.32	14.98	1-3/8	24.70	57.91
SFMA 14 - 12N	7/8	3/4	14.98	17.27	1-1/16	26.70	54.30
SFMA 16 - 12N	1	3/4	15.74	20.32	1-1/16	31.70	58.70
SFMA 16 - 16N	1	1	20.32	20.32	1-3/8	31.70	66.00

* ISO Tapered Threads are available upon request

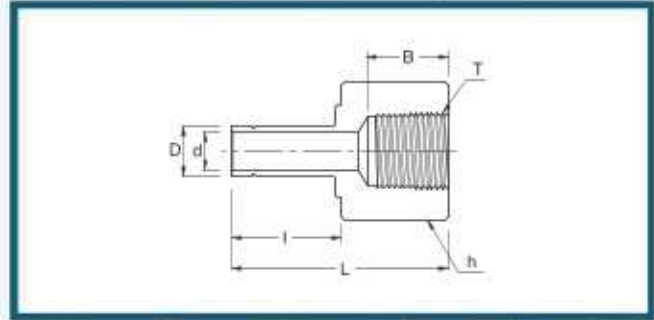
Connects Metric SUPERFLOW Port To Female NPT Thread

Part No.	Tube O.D. (D)	T* (NPT)	d (Min)	d ₁	Width Across Flat (h)	l	L
SFMA 6M - 2N	6	1/8	4.6	4.6	12	15.75	32.8
SFMA 6M - 4N	6	1/4	4.6	4.6	14	15.75	38.1
SFMA 8M - 4N	8	1/4	6.3	6.3	14	16.50	39.1
SFMA 10M - 4N	10	1/4	7.7	7.7	14	17.50	39.9
SFMA 10M - 6N	10	3/8	7.7	7.7	18	17.50	40.6
SFMA 10M - 8N	10	1/2	11.9	7.7	22	17.50	46.2
SFMA 12M - 4N	12	1/4	7.1	9.1	16	23.50	46.5
SFMA 12M - 8N	12	1/2	11.9	9.1	22	23.50	52.0
SFMA 16M - 12N	18	3/4	15.9	13.9	27	24.90	54.8

* ISO Tapered Threads are available upon request

* All dimensions in millimeters unless specified as "inch"

SFFA- FEMALE ADAPTER



Connects Fractional SUPERFLOW Port To Male NPT Thread

Part No.	Tube O.D. D (inch)	T* (NPT)	d (Min)	Width Across Flat h (inch)	l	L
SFFA 2 - 2N	1.8	1.8	2.28	9/16	13.45	31.50
SFFA 2 - 4N	1.8	1.4	2.28	3/4	13.45	35.30
SFFA 3 - 2N	3/16	1.8	3.04	9/16	14.20	32.00
SFFA 3 - 4N	3/16	1.4	3.04	3/4	14.20	35.81
SFFA 4 - 2N	1/4	1.8	4.82	9/16	15.75	33.02
SFFA 4 - 4N	1/4	1.4	4.82	3/4	15.75	37.10
SFFA 4 - 6N	1/4	3/8	4.82	7/8	15.75	39.37
SFFA 4 - 8N	1/4	1/2	4.82	1-1/16	15.75	45.50
SFFA 5 - 2N	5/16	1.8	6.35	9/16	16.80	34.29
SFFA 5 - 4N	5/16	1.4	6.35	3/4	16.80	37.59
SFFA 6 - 2N	3/8	1.8	7.11	9/16	17.50	34.29
SFFA 6 - 4N	3/8	1.4	7.11	3/4	17.50	38.10
SFFA 6 - 6N	3/8	3/8	7.11	7/8	17.50	40.38
SFFA 6 - 8N	3/8	1/2	7.11	1-1/16	17.50	46.79
SFFA 8 - 4N	1/2	1.4	9.90	3/4	23.20	43.43
SFFA 8 - 6N	1/2	3/8	9.90	7/8	23.20	45.46
SFFA 8 - 8N	1/2	1/2	9.90	1-1/16	23.20	51.80
SFFA 10 - 6N	5/8	3/8	12.70	7/8	24.70	48.26
SFFA 10 - 8N	5/8	1/2	12.70	1-1/16	24.70	53.08
SFFA 12 - 8N	3/4	1/2	14.98	1-1/16	24.70	52.83
SFFA 12 - 12N	3/4	3/4	14.98	1-5/16	24.70	54.86
SFFA 12 - 16N	3/4	1	14.98	1-5/8	24.70	58.42
SFFA 14 - 12N	7/8	3/4	17.27	1-5/16	26.70	57.15
SFFA 16 - 12N	1	3/4	20.32	1-5/16	31.70	60.70
SFFA 16 - 16N	1	1	20.32	1-5/8	31.70	64.26

* ISO Tapered Threads are available upon request

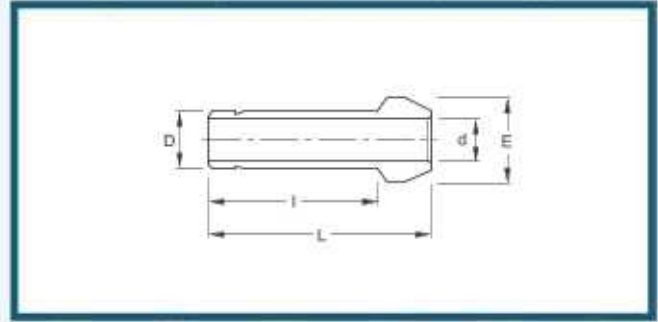
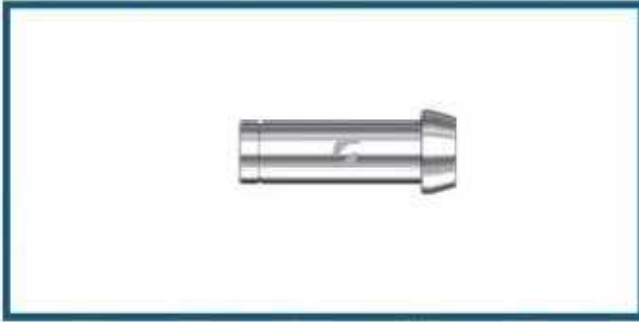
Connects Metric SUPERFLOW Port To Male NPT Thread

Part No.	Tube O.D. (D)	T* (NPT)	d (Min)	Width Across Flat (h)	l	L
SFFA 3M - 2N	3	1.8	1.8	14	13.15	31.2
SFFA 6M - 2N	6	1.8	4.6	14	15.75	32.5
SFFA 6M - 4N	6	1.4	4.6	19	15.75	37.1
SFFA 8M - 4N	8	1.4	6.3	19	16.50	37.6
SFFA 10M - 4N	10	1.4	7.7	19	17.50	38.1
SFFA 10M - 6N	10	3/8	7.7	22	17.50	40.1
SFFA 10M - 8N	10	1/2	7.7	27	17.50	46.5
SFFA 12M - 4N	12	1.4	9.1	19	23.50	43.7
SFFA 12M - 6N	12	3/8	9.1	22	23.50	46.0
SFFA 12M - 8N	12	1/2	9.1	27	23.50	52.3
SFFA 18M - 12N	18	3/4	13.9	32	24.90	54.8

* ISO Tapered Threads are available upon request

* All dimensions in millimeters unless specified as 'inch'

SFPC- PORT CONNECTOR



Connects Fractional SUPERFLOW Ports

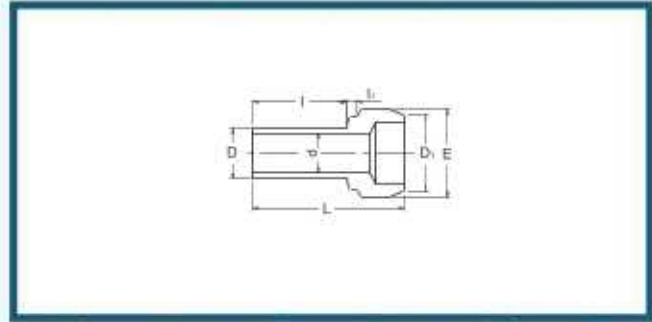
Part No.	Tube O.D.(D) (inch)	d (Min)	E	I	L
SFPC - 2	1/8	2.28	6.09	15.75	22.35
SFPC - 4	1/4	4.82	9.39	18.79	24.63
SFPC - 5	5/16	6.35	10.92	20.06	25.90
SFPC - 6	3/8	7.11	12.70	20.32	26.16
SFPC - 8	1/2	9.90	15.74	25.90	35.81
SFPC - 12	3/4	14.98	22.09	27.68	37.33
SFPC - 16	1	20.32	28.44	34.54	48.00

Connects Metric SUPERFLOW Ports

Part No.	Tube O.D. (D)	d (Min)	E	I	L
SFPC - 3M	3	2.1	6.0	15.7	22.2
SFPC - 6M	6	4.4	9.0	18.7	24.6
SFPC - 8M	8	6.3	11.0	20.0	25.9
SFPC - 10M	10	8.2	13.1	20.2	26.1
SFPC - 12M	12	9.1	15.0	26.0	35.8
SFPC - 16M	16	12.7	19.0	27.6	37.4

* All dimensions in millimeters unless specified as 'inch'

SFRPC- REDUCING PORT CONNECTOR



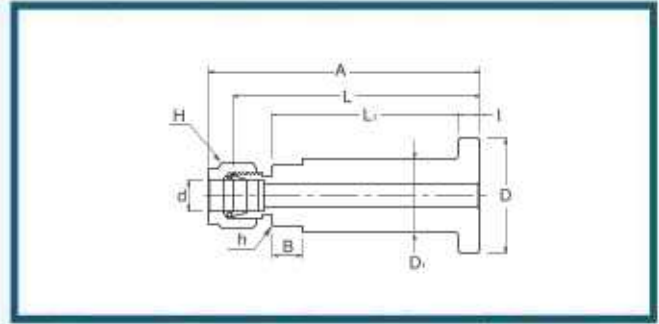
Connects Fractional SUPERFLOW Port To Male AN

Part No.	Tube O.D. D ₁ (inch)	Reduced Tube O.D. D (inch)	d	E	I	l _i	L
SFRPC 2 - 1	1.8	1.16	0.76	6.09	8.63	2.03	17.27
SFRPC 4 - 1	1.4	1.16	0.76	9.39	8.63	3.55	18.03
SFRPC 4 - 2	1.4	1.8	2.28	9.39	13.46	3.30	22.60
SFRPC 6 - 2	3.8	1.8	2.28	12.70	13.46	3.81	23.11
SFRPC 6 - 4	3.8	1.4	4.82	12.70	15.74	3.30	24.89
SFRPC 8 - 4	1.2	1.4	4.82	15.74	15.74	3.81	29.21
SFRPC 8 - 6	1.2	3.8	7.11	15.74	17.52	3.30	30.48
SFRPC 12 - 8	3.4	1.2	9.90	22.09	24.38	3.81	37.84
SFRPC 16 - 8	1	1.2	9.90	28.44	24.38	4.82	42.67
SFRPC 16 - 12	1	3.4	14.98	28.44	25.90	4.06	43.43

* ISO Tapered Threads are available upon request

* All dimensions in millimeters unless specified as "inch"

SFFTC - FLANGE LAPPED TUBES CONNECTOR



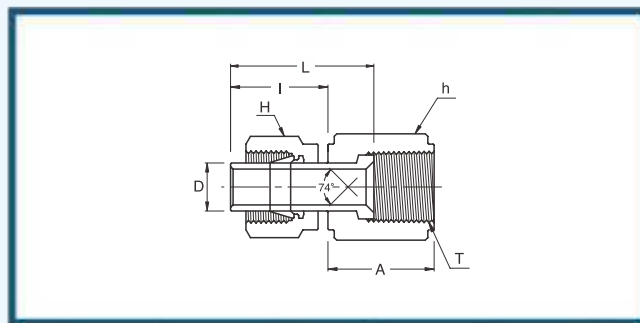
Connects Fractional Tubes

Part No.	Tube Size (inch)	Flange Seat	Dimensions									
			A	B	L ₁	L	I	h (inch)	H (inch)	D	D ₁	d (Min)
SFFTC 4 - SM	1/4	SM	80.8	8.9	56.5	74.9	6.5	11/16	9/16	34.5	21.1	4.8
SFFTC 4 - SR	1/4	SR	80.8	8.9	56.5	74.9	6.5	11/16	9/16	34.5	21.1	4.8
SFFTC 6 - SM	3/8	SM	82.3	8.9	56.5	74.9	6.5	11/16	11/16	34.5	21.1	7.1
SFFTC 6 - SR	3/8	SR	82.3	8.9	56.5	74.9	6.5	11/16	11/16	34.5	21.1	7.1
SFFTC 8 - SM	1/2	SM	85.1	8.9	56.5	74.9	6.5	3/4	7/8	34.5	21.1	10.4
SFFTC 8 - SR	1/2	SR	85.1	8.9	56.5	74.9	6.5	3/4	7/8	34.5	21.1	10.4

Flange lapped tube connector provides easy joint between process lines and instruments designed for use with lap joint flanges to ANSI B 16.5 or BS 1560

* All dimensions in millimeters unless specified as "inch"

SFAF - AN FLARE

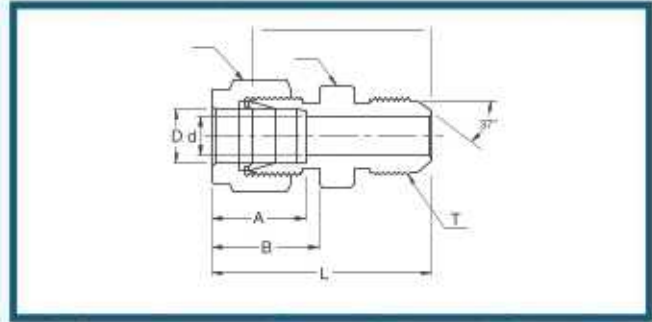


Connects Fractional SUPERFLOW Port To Male AN

Part No.	Tube O.D. D (inch)	AN Tube Flare Size	Straight Thread T (U)	Width Across Flat		A	I	L
				h (inch)	H (inch)			
SFAF2 - 2U	1/8	1/8	5/16-24	3/8	7/16	13.71	13.46	18.54
SFAF2 - 4U	1/8	1/4	7/16-20	9/16	7/16	15.74	13.46	19.05
SFAF4 - 4U	1/4	1/4	7/16-20	9/16	9/16	15.74	15.74	21.33
SFAF6 - 6U	3/8	3/8	9/16-18	11/16	11/16	18.28	17.52	24.89
SFAF8 - 8U	1/2	1/2	3/4-16	7/8	7/8	21.59	23.11	31.75

• All dimensions in millimeters unless specified as "inch"

SFAU - AN UNION

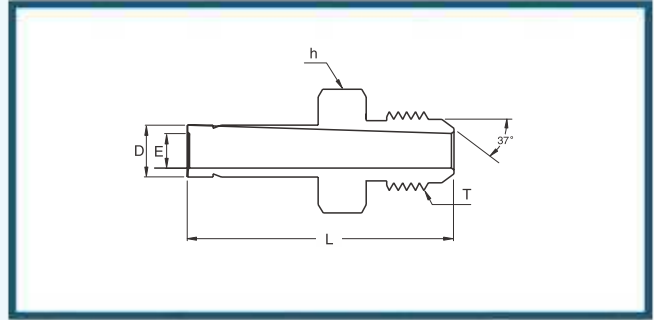


Connects Fractional Tubes To An Flared Tubes

Part No.	Tube O.D. D (inch)	AN Tube Flare Size (inch)	Straight Thread T (U)	d Min	Width Across Flat		A	B	I	L
					h (inch)	H (inch)				
SFAU 2 - 2U	1,8	1,8	5/16-24	1.52	7/16	7/16	12.70	15.24	25.65	32.25
SFAU 2 - 4U	1,8	1,4	7/16-20	2.28	1,2	7/16	12.70	15.24	28.44	35.05
SFAU 4 - 4U	1,4	1,4	7/16-20	4.31	1,2	9/16	15.24	17.78	30.22	37.59
SFAU 5 - 5U	5/16	5/16	1/2-20	5.84	9/16	5/8	16.25	18.54	30.98	38.35
SFAU 6 - 4U	3/8	1,4	7/16-20	4.31	5/8	11/16	16.76	19.30	32.25	39.62
SFAU 6 - 6U	3/8	3/8	9/16-18	7.11	5/8	11/16	16.76	19.30	32.25	39.62
SFAU 8 - 8U	1/2	1/2	3/4-16	9.90	13/16	7/8	22.86	21.84	35.81	45.97
SFAU 12 - 12U	3/4	3/4	1-1/16-12	15.49	1-1/8	1-1/8	24.38	21.84	43.18	53.34
SFAU 16 - 16U	1	1	1-5/16-12	21.33	1-3/8	1-1/2	31.24	26.41	49.27	61.46

* All dimensions in millimeters unless specified as "inch"

SFAA - ADAPTER

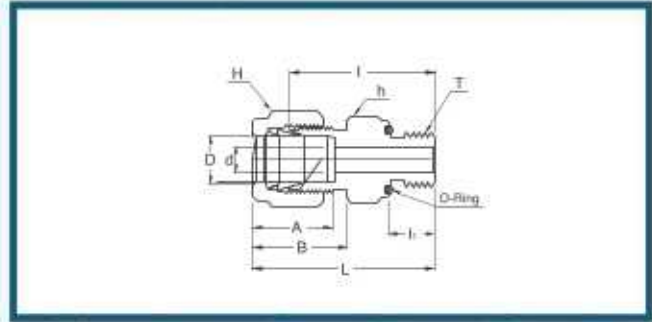


Connects Fractional SUPERFLOW Port To AN Flared Tubes

Part No.	Tube O.D. D (inch)	AN Tube Flare Size (inch)	Straight Thread T (U)	Width Across Flat h (inch)	E	L
SFAA 4 - 4U	1/4	1/4	7/16-20	1/2	4.82	37.08
SFAA 6 - 4U	3/8	1/4	7/16-20	1/2	7.11	38.86
SFAA 6 - 6U	3/8	3/8	9/16-18	5/8	7.11	39.62
SFAA 8 - 8U	1/2	1/2	3/4-16	13/16	9.90	48.51
SFAA 12 - 12U	3/4	3/4	1-1/16-12	1-1/8	14.98	56.13
SFAA 16 - 16U	1	1	1-5/16-12	1-3/8	20.32	65.53

• All dimensions in millimeters unless specified as "inch"

SFOSC - O-SEAL STARIGHT THREAD CONNECTOR

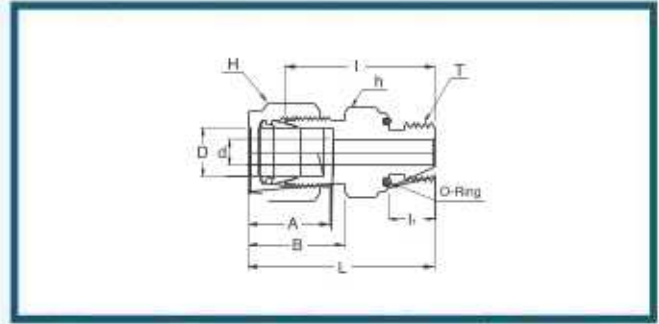


Connects Fractional Tube To Female Straight Thread

Part No.	Tube O.D. D (inch)	Straight Thread T (U)	d Min	Width Across Flat		A	B	I	I	L	O-Ring Uniform Size Number
				h (inch)	H (inch)						
SFOSC 2 - 2U	1/8	5/16-24	2.28	9/16	7/16	12.70	15.24	26.16	8.63	32.76	-011
SFOSC 3 - 3U	3/16	3/8-24	3.05	5/8	1/2	13.71	16.00	27.66	9.65	34.29	-012
SFOSC 4 - 4U	1/4	7/16-20	4.82	3/4	9/16	15.24	17.78	30.98	10.41	38.35	-111
SFOSC 5 - 5U	5/16	1/2-20	6.35	7/8	5/8	16.25	18.54	33.27	11.17	40.64	-112
SFOSC 6 - 6U	3/8	9/16-18	7.11	15/16	11/16	16.76	19.30	35.05	11.93	42.41	-114
SFOSC 8 - 8U	1/2	3/4-16	10.41	1-1/8	7/8	22.86	21.84	35.81	11.93	45.97	-116
SFOSC 12 - 12U	3/4	1-1/16-12	15.75	1-1/2	1-1/8	24.38	21.84	42.16	14.22	52.32	-215
SFOSC 16 - 16U	1	1-5/16-12	22.35	1-3/4	1-1/2	31.24	26.41	45.97	14.22	58.16	-219

* All dimensions in millimeters unless specified as "inch"

SFOPC - O-SEAL PIPE THREAD CONNECTOR

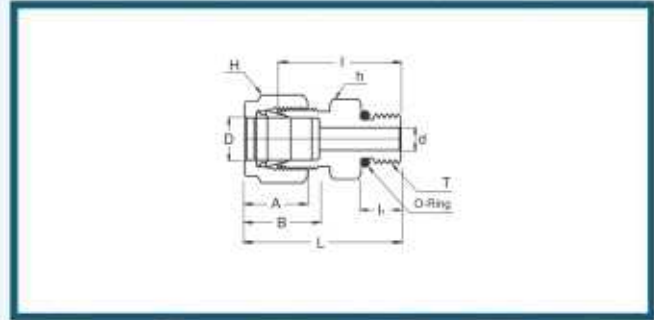


Connects Fractional Tube To Female NPT Thread

Part No.	Tube O.D. D (inch)	T* (NPT)	d Min	Width Across Flat		A	B	l	li	L	O-Ring Uniform Size Number
				h (inch)	H (inch)						
SFOPC 2 - 2N	1/8	1/8	2.28	3/4	7/16	12.70	15.24	26.16	7.11	32.76	-111
SFOPC 4 - 2N	1/4	1/8	4.82	3/4	9/16	15.24	17.78	27.68	7.11	35.05	-111
SFOPC 4 - 4N	1/4	1/4	4.82	15/16	9/16	15.24	17.78	30.98	9.65	38.35	-113
SFOPC 6 - 4N	3/8	1/4	7.11	15/16	11/16	16.76	19.30	32.51	9.65	39.87	-113
SFOPC 6 - 6N	3/8	3/8	7.11	1-1/8	11/16	16.76	19.30	34.03	10.41	41.40	-116
SFOPC 6 - 8N	3/8	1/2	7.11	1-5/16	11/16	16.76	19.30	39.62	13.46	46.99	-212
SFOPC 8 - 8N	1/2	1/2	10.41	1-5/16	7/8	22.86	21.84	39.62	13.46	49.78	-212

* All dimensions in millimeters unless specified as "inch"

SFSMC - SAE/MS MALE CONNECTOR

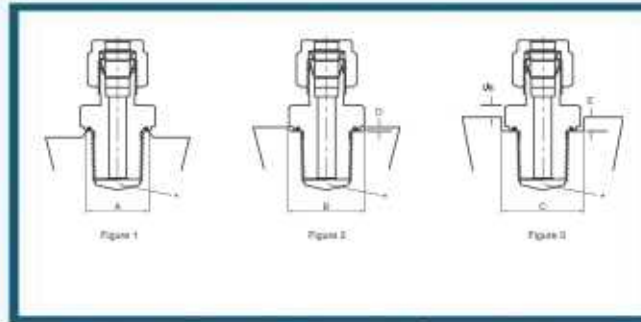


Connects Fractional Tubes To SAE/MS Straight Thread Boss

Part No.	Tube O.D. D (inch)	Straight Thread T (U)	d Min	Width Across Flat		A	B	I	I ₁	L	O-Ring Uniform Size Number
				h (inch)	H (inch)						
SFSMC 2 - 2U	1/8	5/16-24	2.28	7/16	7/16	12.70	15.24	23.36	7.62	29.97	3-902
SFSMC 4 - 4U	1/4	7/16-20	4.82	9/16	9/16	15.24	17.78	26.67	9.14	34.03	3-904
SFSMC 4 - 6U	1/4	9/16-18	4.82	11/16	9/16	15.24	17.78	28.19	9.90	35.56	3-906
SFSMC 4 - 8U	1/4	3/4-16	4.82	7/8	9/16	15.24	17.78	30.22	11.17	37.59	3-908
SFSMC 4 - 10U	1/4	7/8-14	4.82	1	9/16	15.24	17.78	33.27	12.70	40.64	3-910
SFSMC 5 - 5U	5/16	1/2-20	6.35	5/8	5/8	16.25	18.54	27.43	9.14	34.79	3-905
SFSMC 6 - 4U	3/8	7/16-20	5.08	5/8	11/16	16.76	19.30	28.19	9.14	35.56	3-904
SFSMC 6 - 6U	3/8	9/16-18	7.11	11/16	11/16	16.76	19.30	29.71	9.90	37.08	3-906
SFSMC 6 - 8U	3/8	3/4-16	7.11	7/8	11/16	16.76	19.30	31.75	11.17	39.11	3-908
SFSMC 6 - 10U	3/8	7/8-14	7.11	1	11/16	16.76	19.30	34.79	12.70	42.16	3-910
SFSMC 8 - 6U	1/2	9/16-18	7.11	13/16	7/8	22.86	21.84	28.95	9.90	39.11	3-906
SFSMC 8 - 8U	1/2	3/4-16	10.41	7/8	7/8	22.86	21.84	31.75	11.17	41.91	3-908
SFSMC 8 - 10U	1/2	7/8-14	10.41	1	7/8	22.86	21.84	34.79	12.70	44.95	3-910
SFSMC 8 - 12U	1/2	1-1/16-12	10.41	1-1/4	7/8	22.86	21.84	38.86	14.98	49.02	3-912
SFSMC 10 - 8U	5/8	3/4-16	10.66	15/16	1	24.38	21.84	31.75	11.17	41.91	3-908
SFSMC 10 - 10U	5/8	7/8-14	12.70	1	1	24.38	21.84	35.05	12.70	45.21	3-910
SFSMC 12 - 8U	3/4	3/4-16	10.66	1-1/16	1-1/8	24.38	21.84	35.81	11.17	45.97	3-908
SFSMC 12 - 12U	3/4	1-1/16-12	15.74	1-1/4	1-1/8	24.38	21.84	38.86	14.98	49.02	3-912
SFSMC 14 - 14U	7/8	1-3/16-12	18.28	1-3/8	1-1/4	25.90	21.84	38.86	14.98	49.02	3-914
SFSMC 16 - 12U	1	1-1/16-12	16.76	1-3/8	1-1/2	31.24	26.41	41.14	14.98	53.34	3-912
SFSMC 16 - 16U	1	1-5/16-12	22.35	1-1/2	1-1/2	31.24	26.41	42.16	14.98	54.35	3-916

* All dimensions in millimeters unless specified as "inch"

MOUNTING DIMENSIONS FOR O-SEAL CONNECTORS



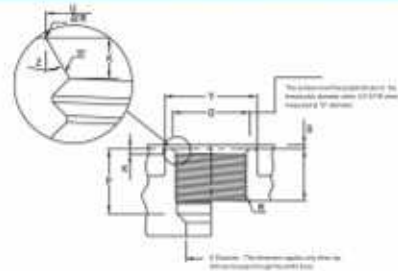
Basic Ordering Number	Straight Thread	Pipe Thread	A Min. Dia.	B Min. Dia.	C Min. Dia.	D Min. Dia.	E Min. Dia.
SFOSC 1 - 2U	5/16-24	-	12.7	15.0	16.8	2.3	4.1
SFOSC 2 - 2U	5/16-24	-	12.7	15.0	16.8	2.3	5.6
SFOPC 2 - 2N	-	1/8 NPT	17.5	19.8	22.4	4.1	7.1
SFOSC 3 - 3U	3/8-24	-	14.2	16.8	19.1	2.3	5.6
SFOSC 4 - 4U	7/16-20	-	17.5	19.8	22.4	4.1	7.1
SFOPC 4 - 2N	-	1/8 NPT	17.5	19.8	22.4	4.1	7.1
SFOPC 4 - 4N	-	1/4 NPT	22.1	24.6	27.7	4.1	7.9
SFOSC 5 - 5U	1/2-20	-	19.1	23.1	26.2	4.1	7.9
SFOSC 6 - 6U	9/16-18	-	20.6	24.6	27.7	4.1	7.9
SFOPC 6 - 4N	-	1/4 NPT	22.1	24.6	27.7	4.1	7.9
SFOPC 6 - 6N	-	3/8 NPT	25.4	29.5	33.3	4.1	8.6
SFOPC 6 - 8N	-	1/2 NPT	31.0	34.0	38.9	5.6	11.2
SFOSC 8 - 8U	3/4-16	-	25.4	29.5	33.3	4.1	8.6
SFOPC 8 - 8N	-	1/2 NPT	31.0	34.0	38.9	5.6	11.2
SFOSC 12 - 12U	1-1/16-12	-	35.8	38.9	44.5	5.6	12.7
SFOSC 16 - 16U	1-5/16-12	-	42.9	45.2	51.6	5.6	14.2

Dimensions are for reference only and are subject to change.

* All dimensions in millimeters unless specified as "inch"

SFAE /MS FITTINGS

SFAE/MS Straight Thread Positionable Elbows and Tees



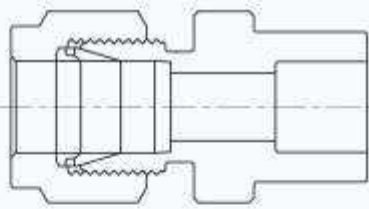
Data for SFAE/MS Straight Thread Boss

Nom. Tube O.D	Thread Size	B / Straight Thread				D Dia	Full Thread Depth	K	O Dia	P ⁺	S ⁺	U ⁺ Dia	Y ⁺ Dia	Z
		Pitch Dia		Minor Dia										
		Min	Max	Min	Max									
1-8	5/16-24	0.2854	0.2902	0.267	0.277	0.062	0.390	0.074	0.438	0.468	0.062	0.358	0.672	12
3-16	3/8-24	0.3479	0.3528	0.330	0.340	0.125	0.390	0.074	0.500	0.468	0.062	0.421	0.750	12
1-4	7/16-20	0.4050	0.4104	0.383	0.395	0.172	0.454	0.093	0.563	0.547	0.062	0.487	0.828	12
3/16	1/2-20	0.4675	0.4731	0.446	0.457	0.234	0.454	0.093	0.625	0.547	0.062	0.550	0.906	12
3-8	9/16-18	0.5624	0.5323	0.502	0.515	0.297	0.500	0.097	0.688	0.609	0.062	0.616	0.969	12
1-2	3/4-16	0.7094	0.7159	0.682	0.696	0.391	0.562	0.100	0.875	0.688	0.094	0.811	1.188	15
5-8	7/8-14	0.8286	0.8356	0.798	0.814	0.484	0.656	0.100	1.000	0.781	0.094	0.942	1.344	15
3-4	1-1/8-12	1.0084	1.0158	0.972	0.990	0.609	0.750	1.130	1.250	0.906	0.094	1.148	1.625	15
7-8	1-3/8-12	1.1334	1.1409	1.097	1.115	0.719	0.750	1.130	1.375	0.906	0.094	1.273	1.765	15
1	1-5/8-12	1.2584	1.2659	1.222	1.240	0.844	0.750	0.130	1.500	0.906	0.125	1.398	1.910	15
1-1/4	1-3/8-12	1.5709	1.5785	1.535	1.553	1.078	0.750	0.132	1.875	0.906	0.125	1.713	2.270	15
1-1/2	1-7/8-12	1.8209	1.8287	1.785	1.803	1.312	0.750	0.132	2.125	0.906	0.125	1.962	2.560	15
2	2-1/2-12	2.4459	2.4540	2.410	2.428	1.781	0.750	0.132	2.750	0.906	0.125	2.587	3.480	15

O-Ring for SAE/MS Fittings Bosses

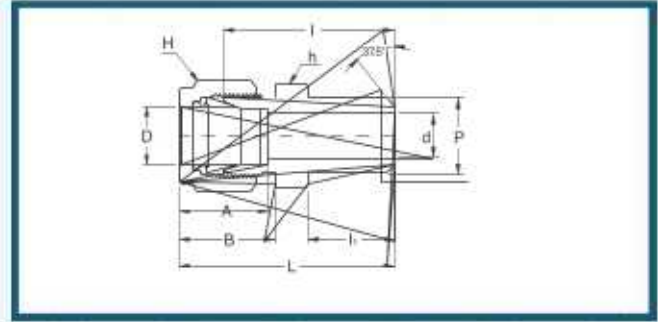
Thread size	Inside Dimension (mm)	Cross Section (mm)	O-Ring Size No.	Thread size	Inside Dimension (mm)	Cross Section (mm)	O-Ring Size No.
5/16-24	6.07	1.63	3-902	3/4-16	16.36	2.21	3-908
3/8-24	7.65	1.63	3-903	7/8-14	19.18	2.46	3-910
7/16-20	8.92	1.83	3-904	1-1/8-12	23.47	2.95	3-912
1/2-20	10.52	1.83	3-905	1-3/8-12	26.59	2.95	3-914
9/16-18	11.89	1.98	3-906	1-5/8-12	29.74	2.95	3-916

* All dimensions in millimeters unless specified as "inch"



WELD END, PLAUG & CAP, SPARE PART

SFPWC MALE PIPE WELD CONNECTOR



Connects Fractional Tubes To Pipe

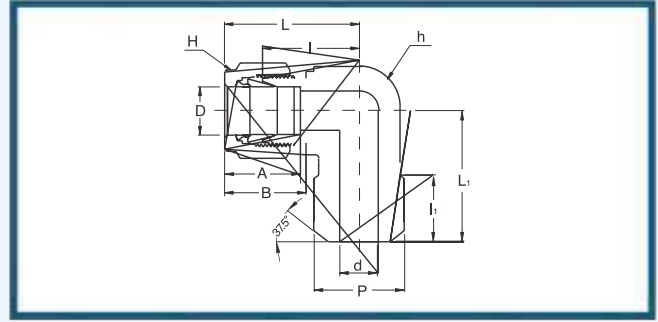
Part No.	Tube O.D. D (inch)	P		d Min	Width Across Flat		A	B	I	l	L
		Nom.	O.D.		h (inch)	H (inch)					
SFPWC 2 - 2P	1/8	1/8	10.30	2.28	7/16	7/16	12.70	15.24	23.87	9.65	30.48
SFPWC 3 - 2P	3/16	1/8	10.30	3.04	7/16	1/2	13.71	16.00	24.63	9.65	31.24
SFPWC 4 - 2P	1/4	1/8	10.30	4.82	1/2	9/16	15.24	17.78	25.40	9.65	32.76
SFPWC 4 - 4P	1/4	1/4	13.70	4.82	9/16	9/16	15.24	17.78	30.48	14.22	37.84
SFPWC 5 - 2P	5/16	1/8	10.30	5.08	9/16	5/8	16.25	18.54	26.67	9.65	34.03
SFPWC 5 - 4P	5/16	1/4	13.70	6.35	9/16	5/8	16.25	18.54	31.24	14.22	38.60
SFPWC 6 - 4P	3/8	1/4	13.70	7.11	5/8	11/16	16.76	19.30	32.51	14.22	39.87
SFPWC 6 - 6P	3/8	3/8	17.10	7.11	11/16	11/16	16.76	19.30	32.51	14.22	39.87
SFPWC 6 - 8P	3/8	1/2	21.30	7.11	7/8	11/16	16.76	19.30	38.86	19.05	46.22
SFPWC 8 - 6P	1/2	3/8	17.10	10.41	13/16	7/8	22.86	21.84	33.27	14.22	43.43
SFPWC 8 - 8P	1/2	1/2	21.30	10.41	7/8	7/8	22.86	21.84	38.86	19.05	49.02
SFPWC 8 - 12P	1/2	3/4	26.67	10.41	1-1/16	7/8	22.86	21.84	40.38	19.05	50.54
SFPWC 10 - 8P	5/8	1/2	21.30	12.70	15/16	1	24.38	21.84	38.86	19.05	49.02
SFPWC 12 - 12P	3/4	3/4	26.67	15.74	1-1/16	1-1/8	24.38	21.84	40.38	19.05	50.54
SFPWC 16 - 16P	1	1	33.40	22.35	1-3/8	1-1/2	31.24	26.41	50.03	23.87	62.23

Connects Metric Tubes To Pipe

Part No.	Tube O.D. D	Male Pipe Size P		d Min	Width Across Flat		A	B	I	l	L
		Nom.	O.D.		h	H					
SFPWC 3M - 2P	3	1/8	10.3	2.4	12	12	12.9	15.3	23.9	9.7	30.5
SFPWC 4M - 2P	4	1/8	10.3	2.4	12	12	13.7	16.1	24.6	9.7	31.2
SFPWC 6M - 2P	6	1/8	10.3	4.8	14	14	15.3	17.7	25.4	9.7	32.8
SFPWC 6M - 4P	6	1/4	13.7	4.8	14	14	15.3	17.7	30.5	14.2	37.9
SFPWC 8M - 2P	8	1/8	10.3	5.1	15	16	16.2	18.6	26.7	9.7	34.2
SFPWC 8M - 4P	8	1/4	13.7	6.4	15	16	16.2	18.6	31.2	14.2	38.7
SFPWC 8M - 8P	8	1/2	21.3	6.4	22	16	16.2	18.6	38.1	19.0	45.6
SFPWC 10M - 4P	10	1/4	13.7	7.1	18	19	17.2	19.5	33.3	14.2	40.9
SFPWC 10M - 6P	10	3/8	17.1	7.9	18	19	17.2	19.5	33.3	14.2	40.9
SFPWC 10M - 8P	10	1/2	21.3	7.9	22	19	17.2	19.5	38.9	19.0	46.5
SFPWC 12M - 4P	12	1/4	13.7	7.1	22	22	22.8	22.0	33.3	14.2	43.4
SFPWC 12M - 6P	12	3/8	17.1	9.5	22	22	22.8	22.0	33.3	14.2	43.4
SFPWC 12M - 8P	12	1/2	21.3	9.5	22	22	22.8	22.0	38.9	19.0	49.0
SFPWC 15M - 8P	15	1/2	21.3	11.9	24	25	24.4	22.0	38.9	19.0	49.0
SFPWC 16M - 8P	16	1/2	21.3	12.7	24	25	24.4	22.0	38.9	19.0	49.0
SFPWC 18M - 8P	18	1/2	21.3	13.5	27	30	24.4	22.0	40.4	19.0	50.5

* All dimensions in millimeters unless specified as "inch"

SFMPWE MALE PIPE WELD ELBOW

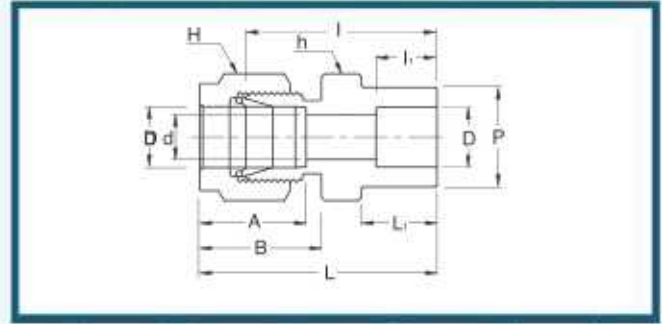


Connects Fractional Tubes To Pipe

Part No.	Tube O.D. D (inch)	Pipe Size (P)		d Min	Width Across Flat		A	B	I	I ₁	L	L ₁
		Nom.	O.D		h (inch)	H (inch)						
SFMPWe 4 - 4P	1/4	1/4	13.70	4.82	1/2	9/16	15.24	17.78	19.55	14.22	26.90	23.37
SFMPWe 6 - 4P	3/8	1/4	13.70	7.11	5/8	11/16	16.76	19.30	23.11	14.22	30.48	25.40
SFMPWe 8 - 8P	1/2	1/2	21.30	10.41	13/16	7/8	22.86	21.84	25.90	19.05	36.06	33.02

• All dimensions in millimeters unless specified as "inch"

SFSWC SOCKET WELD CONNECTOR

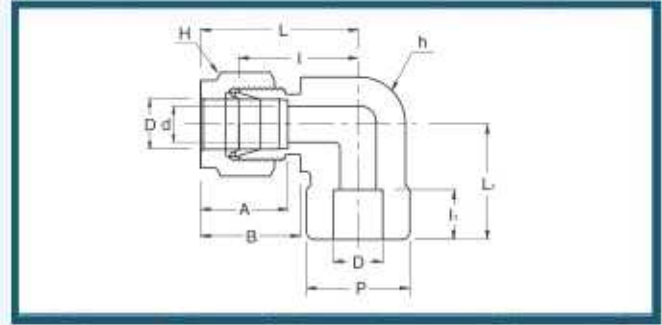


Connects Fractional Tubes To Pipe

Part No.	Tube O.D. D (inch)	d Min	P	Width Across Flat		A	B	l	l ₁	L	L ₁
				h (inch)	H (inch)						
SFSWC - 2	1/8	2.28	7.87	7/16	7/16	12.70	15.24	22.35	6.35	28.95	8.63
SFSWC - 4	1/4	4.82	11.17	1/2	9/16	15.24	17.78	26.16	7.87	33.52	10.41
SFSWC - 6	3/8	7.11	15.74	5/8	11/16	16.76	19.30	30.22	9.65	37.59	11.93
SFSWC - 8	1/2	10.41	19.05	13/16	7/8	22.86	21.84	30.98	12.70	41.14	11.93
SFSWC - 12	3/4	15.74	26.67	1-1/16	1-1/8	24.38	21.84	33.27	14.22	43.43	11.93
SFSWC - 16	1	22.35	33.27	1-3/8	1-1/2	31.24	26.41	40.38	19.05	52.57	14.22

* All dimensions in millimeters unless specified as "inch"

SFSWE SOCKET WELD ELBOW

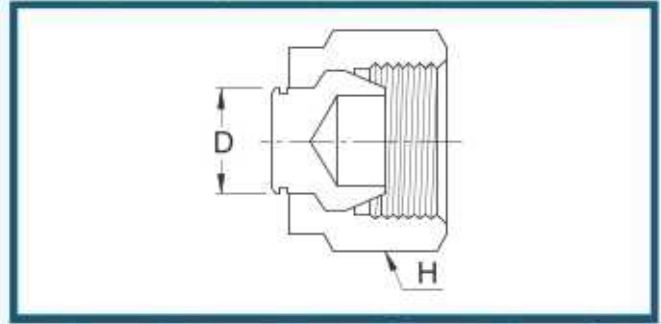


Connects Fractional Tubes To Pipe

Part No.	Tube O.D. D (inch)	d Min	P	Width Across Flat		A	B	I	I ₁	L	L ₁
				h (inch)	H (inch)						
SFSWE - 4	1/4	4.82	12.70	1/2	9/16	15.24	17.78	19.55	7.87	26.92	19.55
SFSWE - 6	3/8	7.11	15.75	5/8	11/16	16.76	19.30	23.11	9.65	30.48	23.11
SFSWE - 8	1/2	10.41	20.57	13/16	7/8	22.86	21.84	25.90	12.70	36.06	25.90
SFSWE - 12	3/4	15.74	26.92	1-1/16	1-1/8	24.38	21.84	29.71	14.22	39.87	29.71
SFSWE - 16	1	22.35	35.05	1-3/8	1-1/2	31.24	26.41	36.83	19.05	49.02	36.83

* All dimensions in millimeters unless specified as "inch"

SFP PLUG



Fractional

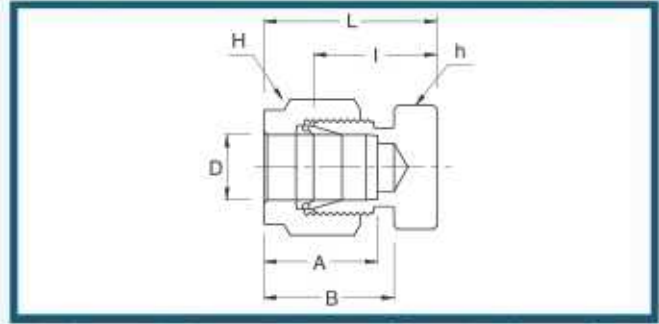
Part No.	Tube O.D. D (inch)	Width Across Flat H (inch)	Part No.	Tube O.D. D (inch)	Width Across Flat H (inch)
SFP - 2	1/8	7/16	SP - 8	1/2	7/8
SFP - 3	3/16	1/2	SP - 10	5/8	1
SFP - 4	1/4	9/16	SP - 12	3/4	1-1/8
SFP - 5	5/16	5/8	SP - 14	7/8	1-1/4
SFP - 6	3/8	11/16	SP - 16	1	1-1/2

Metric

Part No.	Tube O.D. D	Width Across Flat H	Part No.	Tube O.D. D	Width Across Flat H
SFP - 2M	2	12	SP - 15M	15	25
SFP - 3M	3	12	SP - 16M	16	25
SFP - 4M	4	12	SP - 18M	18	30
SFP - 6M	6	14	SP - 20M	20	32
SFP - 8M	8	16	SP - 22M	22	32
SFP - 10M	10	19	SP - 25M	25	38
SFP - 12M	12	22			

* All dimensions in millimeters unless specified as "inch"

SFC CAP



Connects Caps End of Fractional Tubes

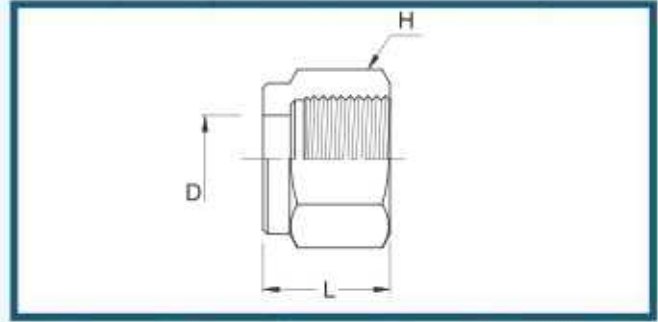
Part No.	Tube O.D. D (inch)	Width Across Flat		A	B	I	L
		h (inch)	H (inch)				
SFC - 1	1/16	5/16	5/16	8.63	10.92	11.20	14.98
SFC - 2	1/8	7/16	7/16	12.70	15.24	13.46	20.06
SFC - 3	3/16	7/16	1/2	13.71	16.00	14.73	21.33
SFC - 4	1/4	1/2	9/16	15.24	17.78	16.00	23.36
SFC - 5	5/16	9/16	5/8	16.25	18.54	17.01	24.38
SFC - 6	3/8	5/8	11/16	16.76	19.30	18.28	25.65
SFC - 8	1/2	13/16	7/8	22.86	21.84	19.05	29.21
SFC - 10	5/8	15/16	1	24.38	21.84	19.81	29.97
SFC - 12	3/4	1-1/16	1-1/8	24.38	21.84	21.33	31.49
SFC - 14	7/8	1-3/16	1-1/4	25.90	21.84	23.87	34.03
SFC - 16	1	1-3/8	1-1/2	31.24	26.41	26.16	38.35

Connects Metric Tubes

Part No.	Tube O.D. D	Width Across Flat		A	B	I	L	Part No.	Tube O.D. D	Width Across Flat		A	B	I	L
		h	H							h	H				
SFC - 2M	2	12	12	12.9	15.3	13.5	20.1	SFC -15M	15	24	25	24.4	22.0	19.8	29.9
SFC - 3M	3	12	12	12.9	15.3	13.5	20.1	SFC -16M	16	24	25	24.4	22.0	19.8	29.9
SFC - 4M	4	12	12	13.7	16.1	14.7	21.3	SFC -18M	18	27	30	24.4	22.0	21.3	31.4
SFC - 6M	6	14	14	15.3	17.7	15.7	23.1	SFC -20M	20	30	32	26.0	22.0	23.9	34.0
SFC - 8M	8	15	16	16.2	18.6	17.0	24.5	SFC -22M	22	30	32	26.0	22.0	23.9	34.0
SFC -10M	10	18	19	17.2	19.5	19.0	26.6	SFC -25M	25	35	38	31.3	26.5	26.2	38.5
SFC -12M	12	22	22	22.8	22.0	19.0	29.1								

* All dimensions in millimeters unless specified as 'inch'

SFN NUT



Fractional

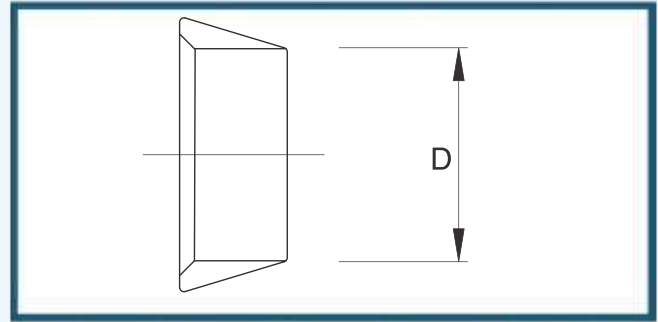
Part No.	Tube O.D. D (inch)	Width Across Flat H (inch)	L	Part No.	Tube O.D. D (inch)	Width Across Flat H (inch)	L
SFN - 1	1/16	5/16	7.90	SFN - 8	1/2	7/8	17.52
SFN - 2	1/8	7/16	11.93	SFN - 10	5/8	1	17.52
SFN - 3	3/16	1/2	11.93	SFN - 12	3/4	1-1/8	17.52
SFN - 4	1/4	9/16	12.70	SFN - 14	7/8	1-1/4	17.52
SFN - 5	5/16	5/8	13.46	SFN - 16	1	1-1/2	20.6
SFN - 6	3/8	11/16	14.22				

Metric

Part No.	Tube O.D. D	Width Across Flat H	L	Part No.	Tube O.D. D	Width Across Flat H	L
SFN - 2M	2	12	11.9	SFN - 14M	14	25	17.4
SFN - 3M	3	12	11.9	SFN - 15M	15	25	17.4
SFN - 4M	4	12	11.9	SFN - 16M	16	25	17.4
SFN - 6M	6	14	12.7	SFN - 18M	18	30	17.4
SFN - 8M	8	16	13.5	SFN - 20M	20	32	17.4
SFN - 10M	10	19	15.1	SFN - 22M	22	32	17.4
SFN - 12M	12	22	17.4	SFN - 25M	25	38	20.6

* All dimensions in millimeters unless specified as "inch"

SFFF FRONT FERRULE



Fractional

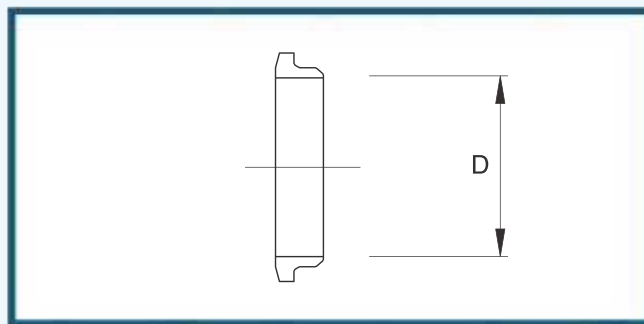
Part No.	Tube O.D. D (inch)	Part No.	Tube O.D. D (inch)
SFFF - 1	1/16	SFFF - 8	1/2
SFFF - 2	1/8	SFFF - 10	5/8
SFFF - 3	3/16	SFFF - 12	3/4
SFFF - 4	1/4	SFFF - 14	7/8
SFFF - 5	5/16	SFFF - 16	1
SFFF - 6	3/8		

Metric

Part No.	Tube O.D. D	Part No.	Tube O.D. D
SFFF - 2M	2	SFFF - 14M	14
SFFF - 3M	3	SFFF - 15M	15
SFFF - 4M	4	SFFF - 16M	16
SFFF - 6M	6	SFFF - 18M	18
SFFF - 8M	8	SFFF - 20M	20
SFFF - 10M	10	SFFF - 22M	22
SFFF - 12M	12	SFFF - 25M	25

• All dimensions in millimeters unless specified as "inch"

SFBF BACK FERRULE



Fractional

Part No.	Tube O.D. D (inch)	Part No.	Tube O.D. D (inch)	Part No.	Tube O.D. D (inch)
SFBF - 1	1/16	SFBF - 5	5/16	SFBF - 12	3/4
SFBF - 2	1/8	SFBF - 6	3/8	SFBF - 14	7/8
SFBF - 3	3/16	SFBF - 8	1/2	SFBF - 16	1
SFBF - 4	1/4	SFBF - 10	5/8		

Metric

Part No.	Tube O.D. D	Part No.	Tube O.D. D	Part No.	Tube O.D. D
SFBF - 2M	2	SFBF - 10M	10	SFBF - 18M	18
SFBF - 3M	3	SFBF - 12M	12	SFBF - 20M	20
SFBF - 4M	4	SFBF - 14M	14	SFBF - 22M	22
SFBF - 6M	6	SFBF - 15M	15	SFBF - 25M	25
SFBF - 8M	8	SFBF - 16M	16		

• All dimensions in millimeters unless specified as "inch"

SFFS FERRULE SET



Fractional

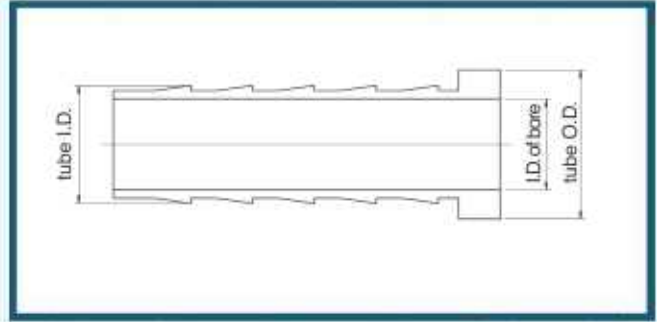
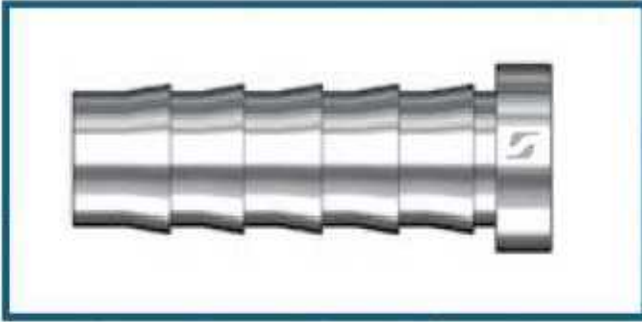
Part No.	Tube O.D. D (inch)	Part No.	Tube O.D. D (inch)	Part No.	Tube O.D. D (inch)
SFFS - 1	1/16	SFFS - 5	5/16	SFFS - 12	3/4
SFFS - 2	1/8	SFFS - 6	3/8	SFFS - 14	7/8
SFFS - 3	3/16	SFFS - 8	1/2	SFFS - 16	1
SFFS - 4	1/4	SFFS - 10	5/8		

Metric

Part No.	Tube O.D. D	Part No.	Tube O.D. D	Part No.	Tube O.D. D
SFFS - 2M	2	SFFS - 10M	10	SFFS - 20M	20
SFFS - 3M	3	SFFS - 12M	12	SFFS - 22M	22
SFFS - 4M	4	SFFS - 15M	15	SFFS - 25M	25
SFFS - 6M	6	SFFS - 16M	16		
SFFS - 8M	8	SFFS - 18M	18		

• All dimensions in millimeters unless specified as "inch"

SFI INSERT

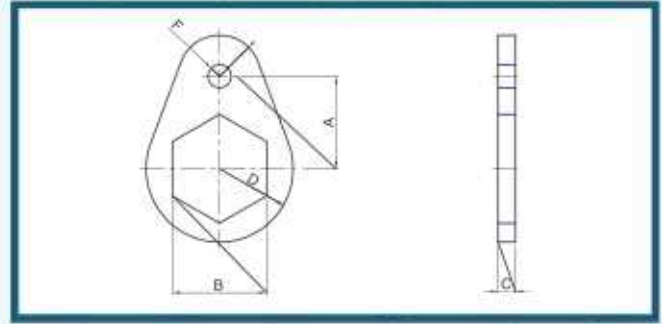


Fractional

Part No.	Tube O.D. (inch)	Tube I.D. (inch)	I.D. of Bore (mm)	Part No.	Tube O.D. (inch)	Tube I.D. (inch)	I.D. of Bore (mm)
SFI 3 - 2	3/16	1/8	2.28	SFI 8 - 4	1/2	1/4	4.82
SFI 4 - 2	1/4	1/8	2.28	SFI 8 - 6	1/2	3/8	7.87
SFI 4 - 3	1/4	3/16	3.55	SFI 10 - 6	5/8	3/8	7.87
SFI 5 - 2	5/16	1/8	2.28	SFI 10 - 8	5/8	1/2	11.17
SFI 5 - 3	5/16	3/16	3.04	SFI 12 - 8	3/4	1/2	11.17
SFI 5 - 4	5/16	1/4	4.82	SFI 12 - 10	3/4	5/8	14.22
SFI 6 - 3	3/8	3/16	3.04	SFI 16 - 12	1	3/4	17.52
SFI 6 - 4	3/8	1/4	4.82				

* All dimensions in millimeters unless specified as "inch"

SFBR BULKHEAD RETAINER



Part No.	A	B	C	D	E	F	Drill Hole Dia.
SFBHU 1-RE	3/8	5/16	1/8	5/16	5/32	5/32	3.05
SFBHU 2-RE	1/2	1/2	1/8	13/32	7/32	5/32	3.05
SFBHU 3-RE (1)	9/16	9/16	1/8	15/32	1/4	5/32	3.05
SFBHU 4-RE (2)	5/8	5/8	1/8	1/2	9/32	5/32	3.05
SFBHU 5-RE	1/16	11/16	1/8	9/16	5/16	5/32	3.05
SFBHU 6-RE	3/4	3/4	1/8	5/8	11/32	5/32	3.05
SFBHU 8-RE (3)	15/16	15/16	1/8	3/4	13/32	7/32	3.66
SFBHU 10-RE (4)	1	1-1/16	1/8	13/16	13/32	7/32	3.66
SFBHU 12-RE (5)	1-1/16	1-3/16	1/8	29/32	15/32	7/32	3.66
SFBHU 14-RE	1-1/8	1-5/16	1/8	1-1/32	17/32	7/32	3.66
SFBHU 16-RE	1-9/32	1-5/8	1/8	1-5/32	9/16	7/32	3.66
SFBHU 8-RE	11/16	18 mm	1/8	9/16	5/16	5/32	3.05
SFBHU 10-RE	15/16	22 mm	1/8	3/4	13/32	7/32	3.66

(1) Can be used with 3mm and 4mm bulkheads

(2) Can be used with 6mm bulkheads

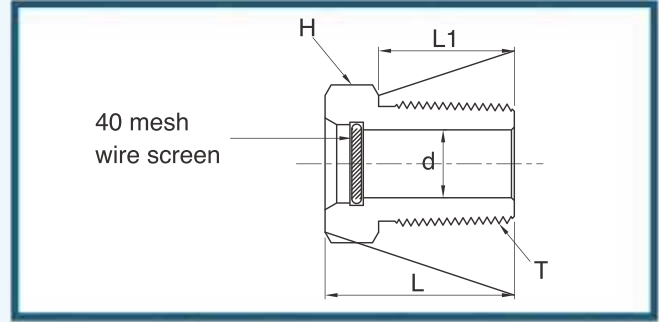
(3) Can be used with 12mm bulkheads

(4) Can be used with 15mm and 16mm bulkheads

(5) Can be used with 18mm bulkheads

* All dimensions in millimeters unless specified as "inch"

SFVP VENT PROTECTOR



Part No.	T	L	L1	d	H
SFVP - 4N	1/4	19.81	14.22	7.11	9/16
SFVP - 6N	3/8	20.57	14.22	10.41	11/16
SFVP - 8N	1/2	26.16	19.05	12.70	7/8
SFVP - 12N	3/4	26.92	19.05	18.29	1-1/16

• All dimensions in millimeters unless specified as "inch"

TUV NORD

CERTIFICATE

Management system as per
ISO 9001: 2015

In accordance with TUV NDA procedures, it is hereby certified that

SUPERIOR HYDROLIQUE PVT. LTD.
Sr. No. 27, Plot No. 52, Burhans Industrial Estate,
Kondhwa Bk., Pune - 411 048,
India

operates a management system in line with the above standard for the following scope

**Manufacture and Supply of DIN 2353 Fittings L & S Series, Double Ferrules
Tube Fittings, Hose Connectors & Fittings Ball, Needle Bleed Manifold
Valves, Hose Assemblies and Pressure Vessels.**

Certificate Registration No. QM 03 62758
Audit Report No. Q 194892022

Valid until 24.12.2023

Authorized Sign
M TUV NDA PVT. LTD.

Since 25.12.2022
Pune, Mumbai

This certificate was conducted in accordance with the TUV NDA audit and certification procedures. It shall be valid subject to regular surveillance audits.

TUV Nord Pvt. Ltd. (E), 601, Narayana Plaza - 1, L.S.G. Marg, Chhatrapati Shivaji Maharaj, Shivajinagar, Pune - 411 004, India. india@tuvnord.com



Notifica della Garanzia di Qualità Totale

Notification of the Full Quality Assurance

n. ECM PED-H 2020-WT32

Riferimento ai sensi della Direttiva 2014/54/UE - Allegato III
based according to 2014/54/UE Directive - Annex III

Richiedente

Applicant

Ragione Sociale
Sede Legale
Registrazione

SUPERIOR HYDROLIQUE PVT. LTD.

PLOT NO. 52, BURHANS INDUSTRIAL ESTATE, SR. 27/27A, KONDHWA BK, NR. FACED FRONT
PUNE - 411048, MAHARASHTRA, INDIA.

Indirizzo del sito produttivo

PLOT NO. 52, BURHANS INDUSTRIAL ESTATE, SR. 27/27A, KONDHWA BK, NR. FACED FRONT

Località di produzione

PUNE - 411048, MAHARASHTRA, INDIA.

Dipartimento di riferimento

Design and manufacture of fittings & hose assembly

Descrizione

Identificazione della attrezzatura

vedi annesso I

Identificazione di equipaggiamento

vedi annesso I

Validità del certificato

Il certificato è valido fino al 24/12/2023.

Il risultato delle verifiche periodiche del sistema qualità sono state

regolarmente verificati. The results of periodic audits of the quality system is an integral part

integrante di questo certificato.

of this certificate.

Questo Certificato di Garanzia della Qualità Totale è

This Certificate of Assurance of Full Quality Assurance is valid until

valido fino al 24/12/2023 e può essere ritirato in data verificata.

24/12/2023 and can be withdrawn if surveillance audits show that the

system di conformità risulta che il sistema di qualità non è più

quality system no longer complies with the provisions in force to

coferire a questo prodotto l'attestazione di qualità.

maintain it.

In accordo con quanto previsto nell'Allegato II, paragrafo 11 della

In accordance with the Annex II, paragraph 11 of Directive 2014/54/UE

Direttiva 2014/54/UE, la marcatura CE sul prodotto deve essere

the CE marking must be followed by n. 1282 that identifies ECM as

seguita dal n. 1282 che identifica ECM come l'Organismo notificato.

Notified Body responsible for supervising the production.

Incurra nella sanzione della produzione.

Example of marking

CE 1282

Data di prima emissione

03/12/2020

Data di rinnovo

23/12/2022

Validità (DD)

Indefinite

Validità (MM/AA)

23/12/2022

Scadenza - Expiry date

21/12/2023



Questo certificato, compreso l'allegato, può essere riprodotto solo integralmente e senza alcuna variazione. Pagina 2 di 4
This certificate, annex included, may only be reproduced in its entirety and without any change. Page 2 of 4

Ente Certificazione Macchine srl

Via G. Della Porta - 100, Canale di Serravalle - 41013 Valerengo PV

tel. +39 0521 900411 - fax +39 0521 900111 - info@entecertificazionemacchine.it - www.entecertificazionemacchine.it

SUPERIOR
HYDROLIQUE PVT LTD

SUPERIOR

HYDROLIQUE PVT LTD